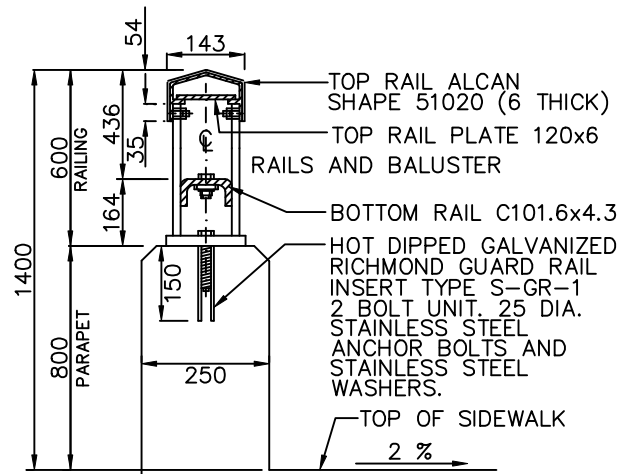
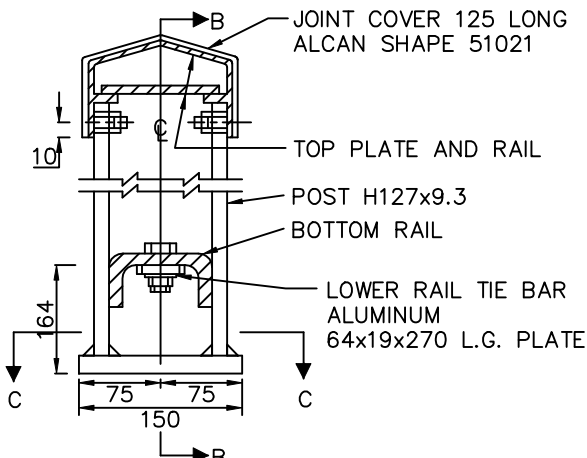


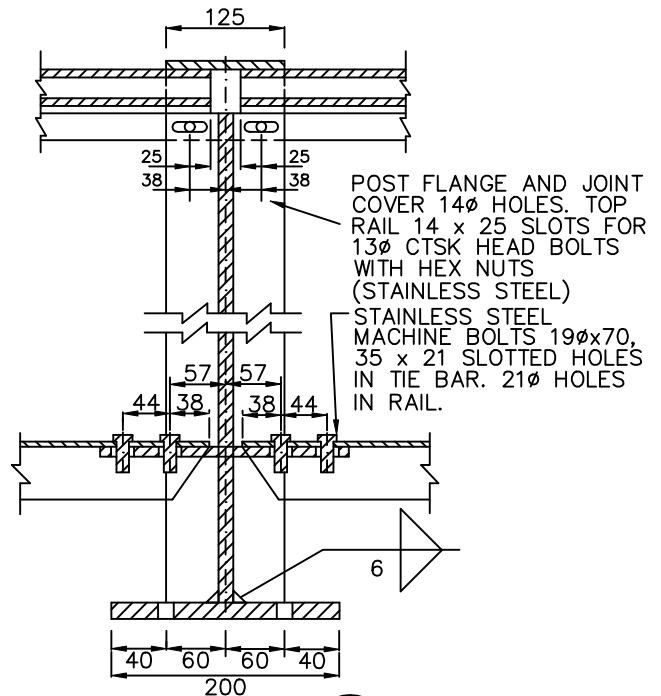
PANEL ELEVATION



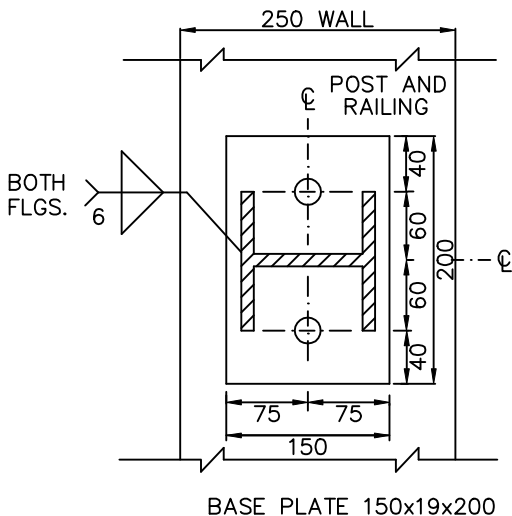
SECTION A



POST DETAIL



SECTION B



SECTION C

NOTES

1. PAINT BOTTOM OF BASE PLATE WITH ASPHALTIC MASTIC.
2. POST AND BALUSTERS TO BE VERTICAL. TOP AND BOTTOM RAILS TO BE PARALLEL TO TOP OF CONCRETE.

MATERIAL	USE	SPECIFICATION
ALUMINUM - EXTRUDED SHAPES	POST AND RAILS	C.S.A.- HA 5 GS11R-T6
ALUMINUM - TUBING	BALUSTERS	C.S.A.- HA 7 GS11R-T6
ALUMINUM - SHEET AND PLATE	TOP BASE AND TIE PLATES	C.S.A.- HA 4 GM41-H321
STAINLESS STEEL TYPE 304	BOLTS AND SET SCREWS NUTS AND WASHERS	A.S.T.M.- A314-63

METRIC
ALL DIMENSIONS SHOWN HERE ARE IN MILLIMETRES UNLESS OTHERWISE NOTED

APPROVED BY

Tom Denes
TOM DENES, P. ENG.
EXECUTIVE DIRECTOR TECHNICAL SERVICES

SCALE

N.T.S.

DATE: JUNE, 2001

REVISED:

STANDARD No.

T-900.01-2



STANDARD ALUMINUM RAILING FOR
SIDEWALKS AND WALLS WITH CONCRETE PARAPETS