

Trees to be removed

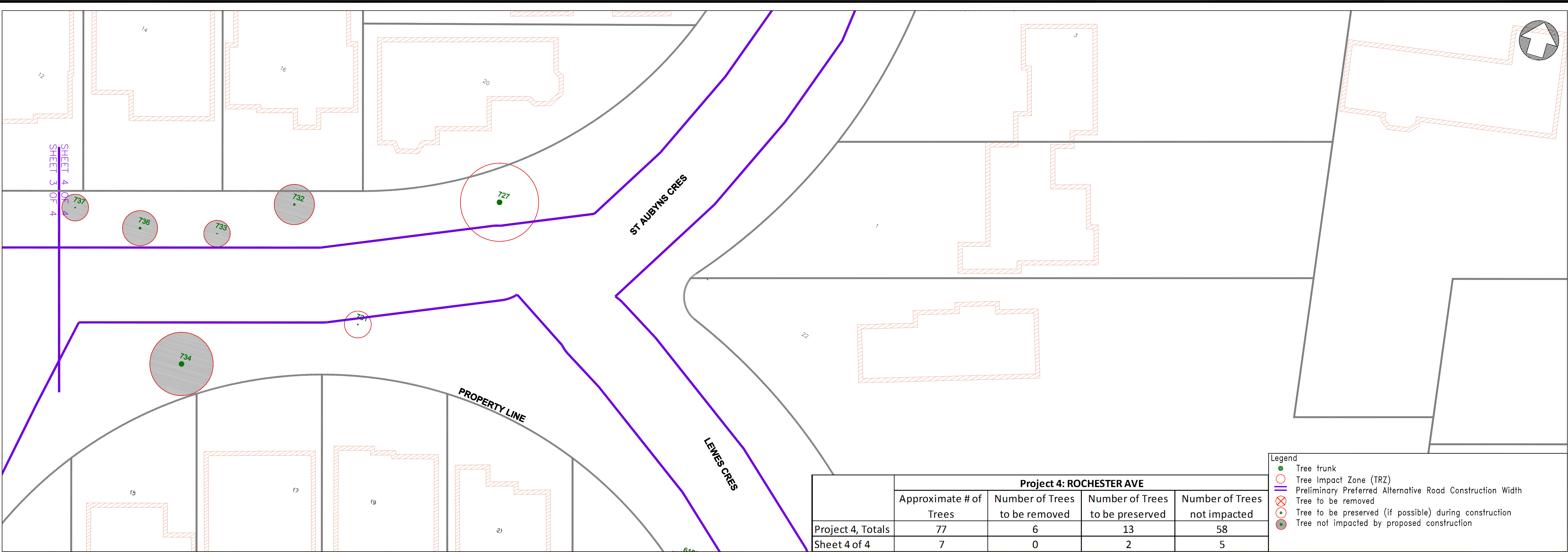
Tree No	Tree Species		Condition	Diameter (cm)
497	TILIA X EUCHLORA	Caucasian lime	High	65

Trees to be preserved (if possible)

Tree No	Tree Species		Condition	Diameter (cm)
479	QUERCUS RUBRA	Red Oak	High	93
487	FRAXINUS AMERICANA	American Ash	High	83
488	AESCULUS HIPPOCASTANUM	Horse Chestnut	Moderate	36
500	TILIA CORDATA	Littleleaf Linden	ModHigh	44

Trees not Impacted

Tree No	Tree Species		Condition	Diameter (cm)
476	SYRINGA RETICULATA IVORY SILK	Japanese Tree Lilac	ModHigh	32
477	MALUS BACCATA	Siberian Crabapple	ModHigh	12
478	AMELANCHIER LAEVIS	Smooth Serviceberry	ModHigh	8
480	BETULA PAPYRIFERA	Paper Birch	ModHigh	28
486	AMELANCHIER LAEVIS	Smooth Serviceberry	Moderate	12
489	TILIA CORDATA GREENSPIRE	Greenspire	ModHigh	7
490	PSEUDOTSUGA MENZIESII	Douglas Fir	ModHigh	30
491	ACER PLATANOIDES	Norway Maple	ModHigh	18
492	ACER PLATANOIDES	Norway Maple	Moderate	9
493	GINKGO BILOBA	Ginkgo	ModHigh	12
494	GINKGO BILOBA	Ginkgo	ModHigh	14
495	GINKGO BILOBA	Ginkgo	ModHigh	12
496	TILIA CORDATA	Littleleaf Linden	ModHigh	67
498	PICEA GLAUCA	White Spruce	ModHigh	18
499	PICEA GLAUCA	White Spruce	ModHigh	15
501	ACER PLATANOIDES	Norway Maple	High	50



Trees to be removed

Tree No	Tree Species		Condition	Diameter (cm)
---	---	---	---	---

Trees to be preserved (if possible)

Tree No	Tree Species		Condition	Diameter (cm)
727	ACER PLATANOIDES	Norway Maple	High	56
731	SORBUS AUCUPARIA	Mountain Ash	ModHigh	13

Trees not Impacted

Tree No	Tree Species		Condition	Diameter (cm)
732	BETULA PAPYRIFERA	Paper Birch	Moderate	21
733	AMELANCHIER LAEVIS	Smooth Serviceberry	ModHigh	10
734	GLEDITSIA TRIACANTHOS VAR INERMIS	Smooth Honeylocust	Moderate	54
736	GLEDITSIA TRIACANTHOS VAR INERMIS	Smooth Honeylocust	ModHigh	24
737	PYRUS CALLERYANA GLENS FORM	Chanticlear Pear	ModHigh	13