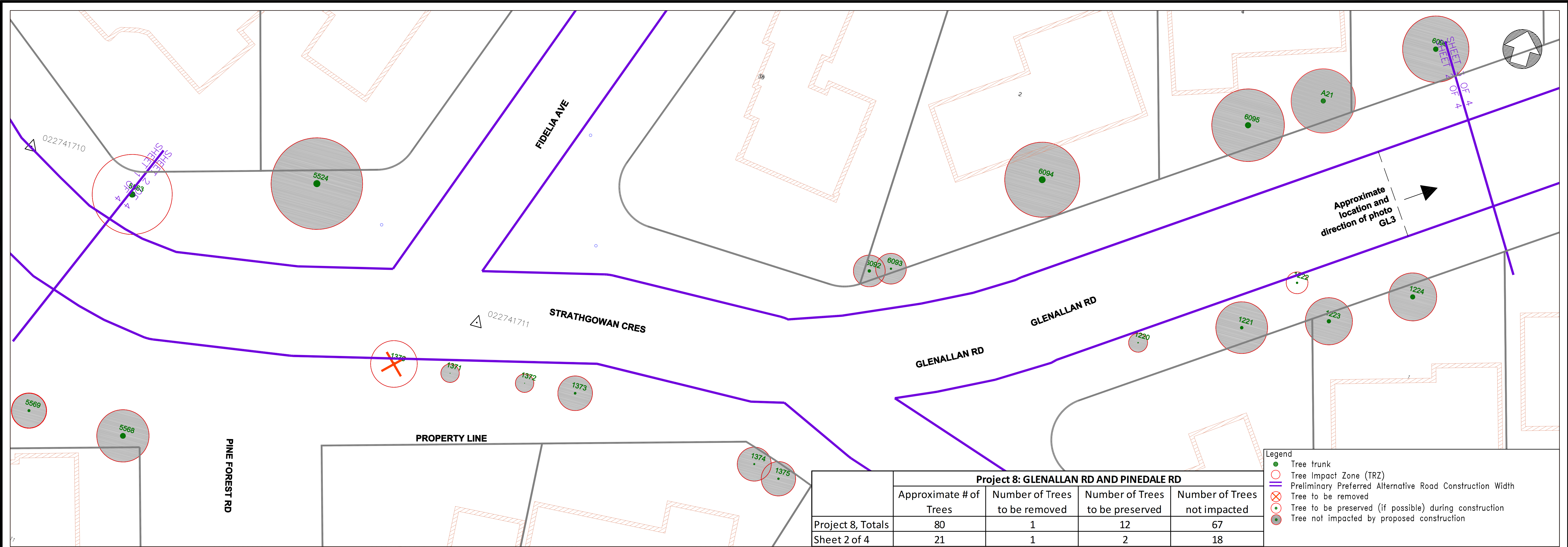


Trees to be removed					Trees to be preserved (if possible)					Trees not Impacted				
Tree No	Tree Species		Condition	Diameter (cm)	Tree No	Tree Species		Condition	Diameter (cm)	Tree No	Tree Species		Condition	Diameter (cm)
---	---		---	---	5525	AESCULUS HIPPOCASTANUM	Horse Chestnut	ModHigh	64	5529	ACER SACCHARUM SSP SACCHARUM	Sugar Maple	ModHigh	34
					5526	ACER SACCHARINUM	Silver Maple	ModHigh	129	5530	MAGNOLIA SP	Magnolia	ModHigh	31
					5527	POPULUS BALSAMIFERA	Balsam Poplar	ModHigh	81	5531	PICEA PUNGENS KOSTERI	Blue Spruce	ModHigh	35
					5528	ACER PLATANOIDES	Norway Maple	ModHigh	40	5532	PICEA ABIES	Norway Spruce	ModHigh	21
					5536	QUERCUS RUBRA	Red Oak	ModHigh	92	5533	PICEA PUNGENS GLAUCA	Colorado Spruce	ModHigh	10
					5540	SYRINGA RETICULATA IVORY SILK	Japanese Tree Lilac	ModHigh	8	5534	ACER SACCHARUM SSP SACCHARUM	Sugar Maple	ModHigh	71
					5541	SYRINGA RETICULATA IVORY SILK	Japanese Tree Lilac	ModHigh	8	5535	ACER SACCHARUM SSP SACCHARUM	Sugar Maple	ModHigh	43
					5555	ACER SACCHARINUM	Silver Maple	ModHigh	123	5537	PICEA GLAUCA	White Spruce	ModHigh	12
					5557	ACER PLATANOIDES	Norway Maple	ModHigh	33	5538	PRUNUS SEROTINA	Black Cherry	Moderate	38
					5558	ACER PLATANOIDES	Norway Maple	ModHigh	45	5539	OSTRYA VIRGINIANA	American Hophornbeam	ModHigh	12
										5542	SYRINGA RETICULATA IVORY SILK	Japanese Tree Lilac	ModHigh	8
										5543	PRUNUS VIRGINIANA	Chokecherry	ModHigh	18
										5544	ABIES BALSAMEA	Balsam Fir	ModHigh	16
										5545	ABIES BALSAMEA	Balsam Fir	ModHigh	14
										5547	ACER PLATANOIDES	Norway Maple	ModHigh	24
										5549	ACER SACCHARUM SSP SACCHARUM	Sugar Maple	ModHigh	57
										5550	PINUS STROBUS	White Pine	ModHigh	74
										5551	TSUGA CANADENSIS	Canadian Hemlock	ModHigh	5
										5552	PICEA ABIES	Norway Spruce	ModHigh	5
										5553	PICEA PUNGENS GLAUCA	Colorado Spruce	ModHigh	7
										5554	ACER SACCHARUM SSP SACCHARUM	Sugar Maple	ModHigh	6
										5556	ACER SACCHARUM SSP SACCHARUM	Sugar Maple	ModHigh	73
										5559	ACER PLATANOIDES	Norway Maple	ModHigh	22
										5560	ACER PLATANOIDES	Norway Maple	ModHigh	22
										5561	ACER PLATANOIDES	Norway Maple	ModHigh	37
										5562	ACER PLATANOIDES	Norway Maple	ModHigh	12
										5564	ACER PLATANOIDES	Norway Maple	ModHigh	45
										5565	ACER PLATANOIDES	Norway Maple	ModHigh	26
										5570	GLEDITSIA TRIACANTHOS VAR INERMIS	Smooth Honeylocust	ModHigh	28



Trees to be removed

Tree No	Tree Species		Condition	Diameter (cm)
1370	PICEA ABIES	Norway Spruce	ModHigh	35

Trees to be preserved (if possible)

Tree No	Tree Species		Condition	Diameter (cm)
1222	THUJA OCCIDENTALIS	Eastern White Cedar	Moderate	20
5563	FAGUS GRANDIFOLIA	American Beech	High	64

Trees not Impacted

Tree No	Tree Species		Condition	Diameter (cm)
5568	ACER PLATANOIDES	Norway Maple	ModHigh	58
5569	ACER PLATANOIDES	Norway Maple	ModHigh	27
1371	CERCIS CANADENSIS	Rudbud	ModHigh	4
1372	CERCIS CANADENSIS	Rudbud	ModHigh	4
1373	BETULA PAPYRIFERA	Paper Birch	Moderate	23
1374	PICEA OMORIKA	Serbian Spruce	ModHigh	16
1375	PICEA OMORIKA	Serbian Spruce	ModHigh	20
1220	SORBUS AUCUPARIA	Mountain Ash	ModHigh	9
1221	PICEA OMORIKA	Serbian Spruce	ModHigh	32
1223	MALUS BACCATA	Siberian Crabapple	ModHigh	41
1224	MALUS BACCATA	Siberian Crabapple	High	50
5524	ACER SACCHARUM SSP SACCHARUM	Sugar Maple	ModHigh	72
6092	BETULA PAPYRIFERA	Paper Birch	Moderate	31
6093	BETULA PAPYRIFERA	Paper Birch	Moderate	19
6094	TILIA CORDATA	Littleleaf Linden	High	69
6095	ACER PLATANOIDES	Norway Maple	High	62
6096	PINUS NIGRA	Black Pine	ModHigh	53
A21	ACER PLATANOIDES	Norway Maple	Moderate	51

No.	DATE	REVISIONS	INITIAL	SIGNED

Engineering & Construction Services

JOHN P. KELLY, P.ENG.
Director, Design & Construction
Linear Underground Infrastructure

Manager, Design & Construction
Linear Underground Infrastructure
Basement Flooding Protection Program

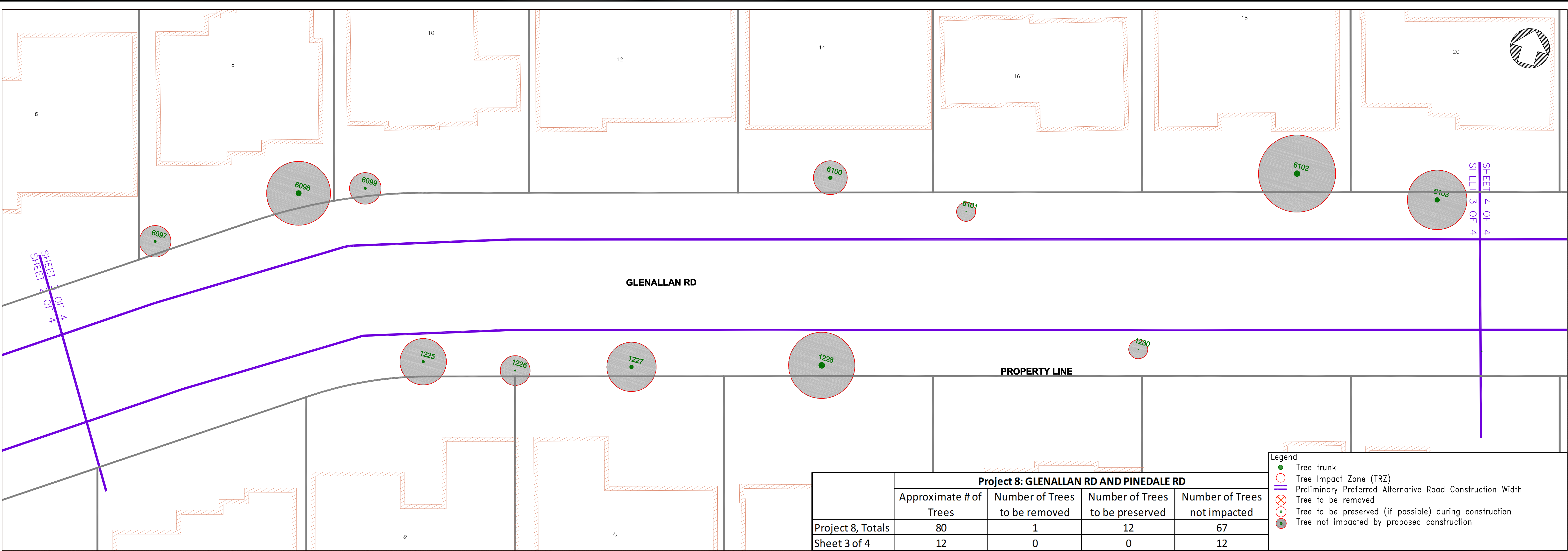
MICHAEL D'ANDREA, P.ENG.
EXECUTIVE DIRECTOR
Engineering &
Construction Services

⑧ GLENALLAN RD AND PINEDALE RD

City of Toronto

Plan and Profile (Not for Construction)

DESIGN:	CR	DRAFTING:	CR	CHECK:	PT	CONTRACT No.
SCALE:	HOR 1:200 VER 1:100			DRAWING NUMBER:		SHEET No. 2 OF 4
DATE:	11/05/2015					



Trees to be removed

Tree No	Tree Species		Condition	Diameter (cm)
---	---	---	---	---

Trees to be preserved (if possible)

Tree No	Tree Species		Condition	Diameter (cm)
---	---	---	---	---

Trees not Impacted

Tree No	Tree Species		Condition	Diameter (cm)
1225	CHAMAECYPARIS NOOTKATENSIS	Alaska Cedar	ModHigh	28
1226	CATALPA BIGNONIOIDES	Indian Bean	Moderate	16
1227	GLEDITSIA TRIACANTHOS VAR INERMIS	Smooth Honeylocust	ModHigh	40
1228	ACER PLATANOIDES	Norway Maple	Moderate	65
1230	PYRUS CALLERYANA GLENS FORM	Chanticlear Pear	ModHigh	8
6097	QUERCUS RUBRA	Red Oak	Moderate	25
6098	ACER PLATANOIDES	Norway Maple	ModHigh	59
6099	BETULA PAPYRIFERA	Paper Birch	Moderate	25
6100	MALUS BACCATA	Siberian Crabapple	Moderate	40
6101	ACER SACCHARUM SSP SACCHARUM	Sugar Maple	ModHigh	8
6102	BETULA PAPYRIFERA	Paper Birch	High	64
6103	PICEA PUNGENS GLAUCA	Colorado Spruce	High	51

