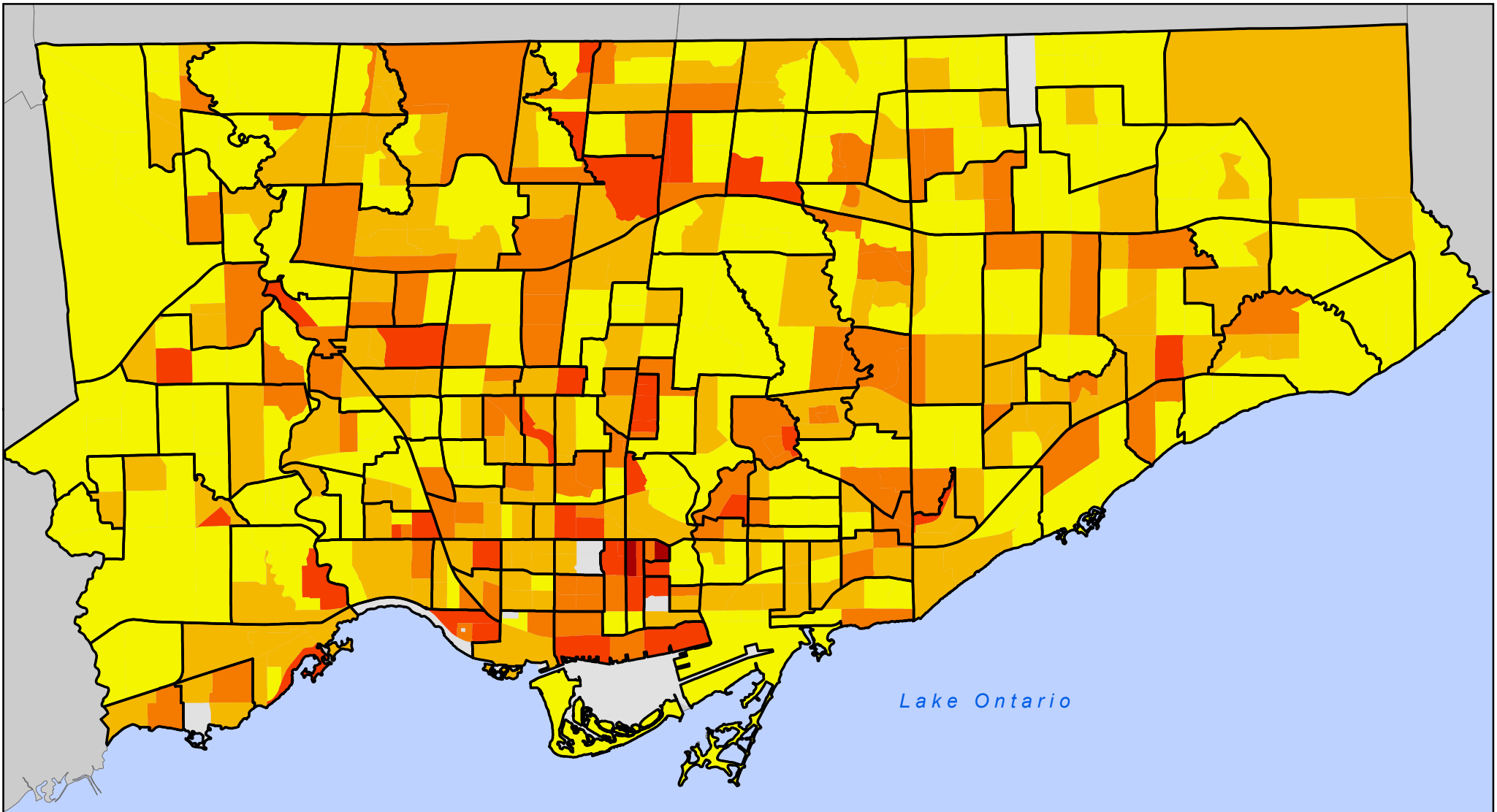


# Tenant Households Spending 30%+ on Rent

by Census Tract



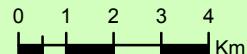
## Legend

### Households (number)

- 0 - 245
- 246 - 520
- 521 - 900
- 901 - 1,690
- 1,691 - 3,200

- Neighbourhood Boundary
- No Data or data suppression

Notes: Tenant-occupied households spending 30% or more of household income on gross rent. Data presented by census tracts and overlaid with neighbourhood boundaries. Distribution is by natural breaks.



Source: Statistics Canada, Census 2006; City of Toronto.

Copyright (c) 2008 City of Toronto. All Rights Reserved.  
 Published: May 2008  
 Prepared by: Social Policy Analysis & Research  
 Contact: [spar@toronto.ca](mailto:spar@toronto.ca)