



Welcome

Community Consultation Meeting

November 28, 2016

Why Are We Here Today?

- Review and discuss the Bathurst Quay Neighbourhood Plan Framework
- Review and discuss an Action Plan for Implementation
- Next Steps

We are Here 



Central Waterfront Secondary Plan

The Bathurst Quay Neighbourhood Plan will support the core principles and vision of waterfront revitalization established through the Central Waterfront Secondary Plan.



Core Principles

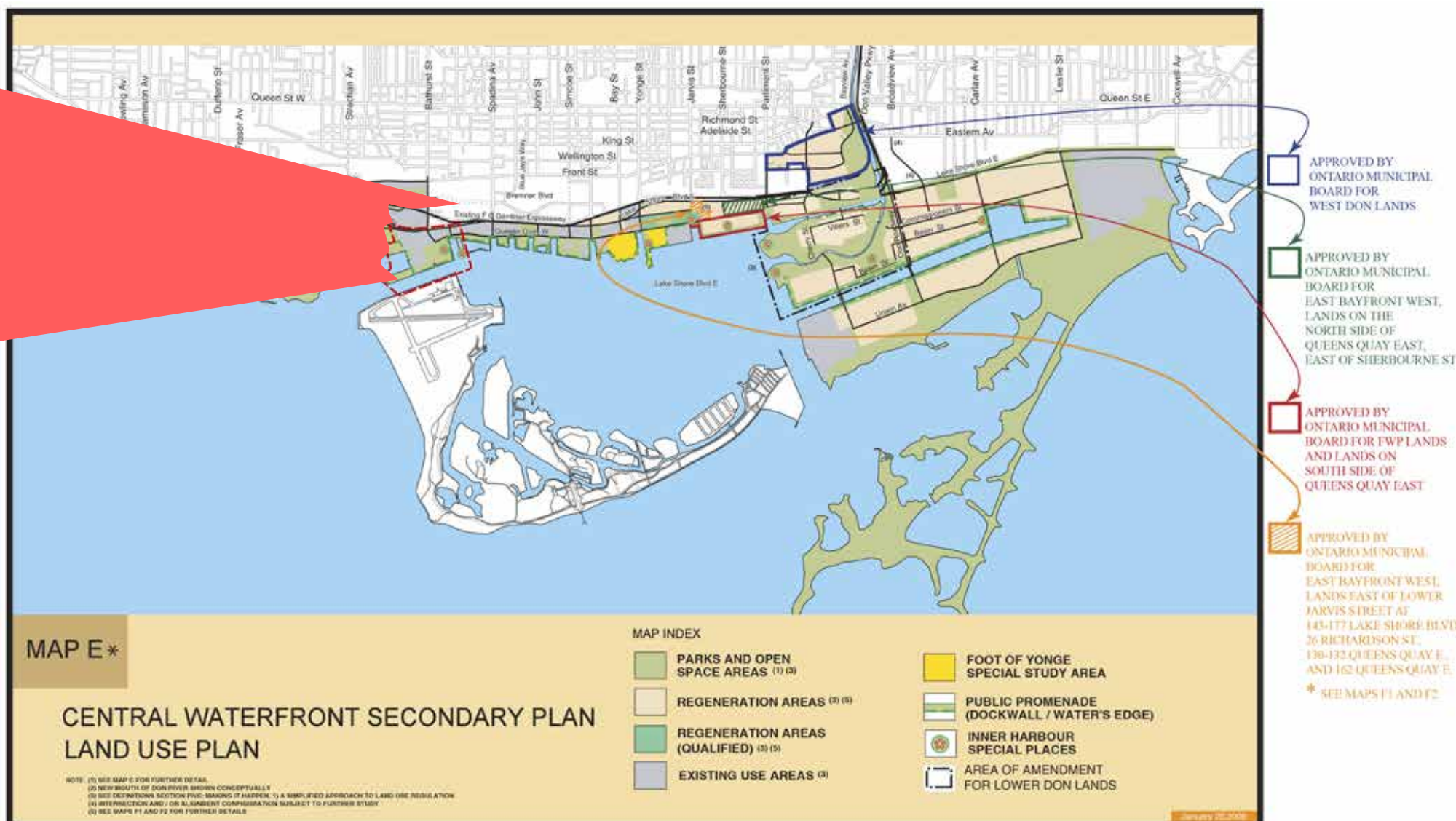
The Bathurst Quay Neighbourhood Plan will support the core principles and vision of waterfront revitalization established through the Central Waterfront Secondary Plan.

- Removing Barriers/Making Connections**
 Removing barriers and improving connections to the waterfront are essential for waterfront renewal. The role of east-west waterfront cultural and heritage corridors such as Queens Quay are promoted and reinforced. North-South connector streets such as Eireann Quay and Stadium Road will be enhanced through high quality design and streetscaping.
- Building a Network of Spectacular Parks and Public Places**
 A system of connected waterfront parks and public places that are high quality, accessible and inviting, and that integrate and interpret the waterfront's natural and cultural heritage, and its industrial heritage and dockwall legacy are key components of a renewed waterfront. The water's edge defines this system and is to be preserved for public use through the creation of a continuous and highly accessible public water's edge promenade.
 The Canada Malting Silos Complex is a landmark and special place on the City's waterfront to be retained and improved through transformation as a community and cultural hub.
- Promoting a Clean and Green Environment**
 Mixed use communities that provide opportunities to live, work and play close together, and amenities such as pedestrian and cycling routes that are safe attractive, comfortable and generously landscaped promote sustainability.
- Creating Dynamic and Diverse new Communities**
 Ensuring that our waterfront neighbourhoods are dynamic and diverse with a variety of uses and development forms, community services and facilities, and housing to accommodate a broad range of household sizes, composition, ages and incomes is a core principle of a renewed and vibrant waterfront.



Land Use Plan

- Parks and Open Space Areas
- Existing Use Areas
- Inner Harbour Special Spaces



Revised July 2010, Revised Nov. 2011, Revised Sept. 2012, Revised June 2014 DECEMBER 2015

Bathurst Quay Neighbourhood

The Bathurst Quay neighbourhood is an established community rich in heritage with a diverse population and unique identity. There are a wide range of housing options in the neighbourhood, but few retail stores and services. A variety of parks and open spaces offer an array of recreation and cultural experiences for residents and visitors. The community is also served by two co-located public schools, the Waterfront School and City Schools, as well as the Waterfront Neighbourhood Centre and St. Stephen's Child Care Centre.

Bathurst Quay Today



BATHURST QUAY NEIGHBOURHOOD PLAN - CONTEXT PLAN

The Bathurst Quay Neighbourhood Plan will outline a vision and strategy for the future of the neighbourhood. Building on Bathurst Quay's existing strengths it will establish a framework for completing the community. The vision and strategy will be expressed in planning policies and in the public realm, movement and urban design framework.



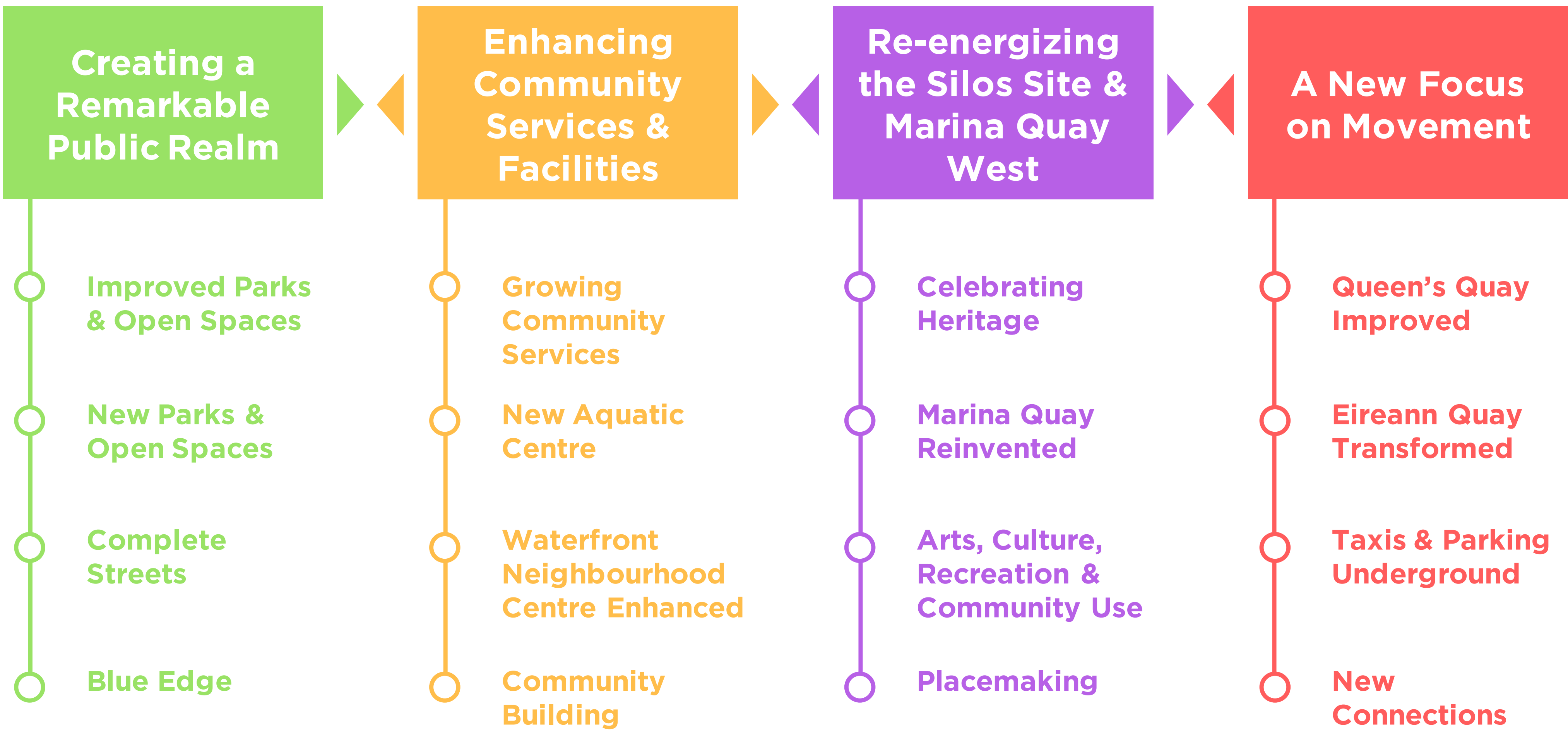
Bathurst Quay Neighbourhood Plan

Our Shared Vision

Bathurst Quay is a successful, vibrant neighbourhood where residents are connected and share a strong sense of place. We are a neighbourhood that celebrates our waterfront location, and welcomes all to experience our remarkable waterfront parks and open spaces, and our many heritage, community, and cultural amenities.

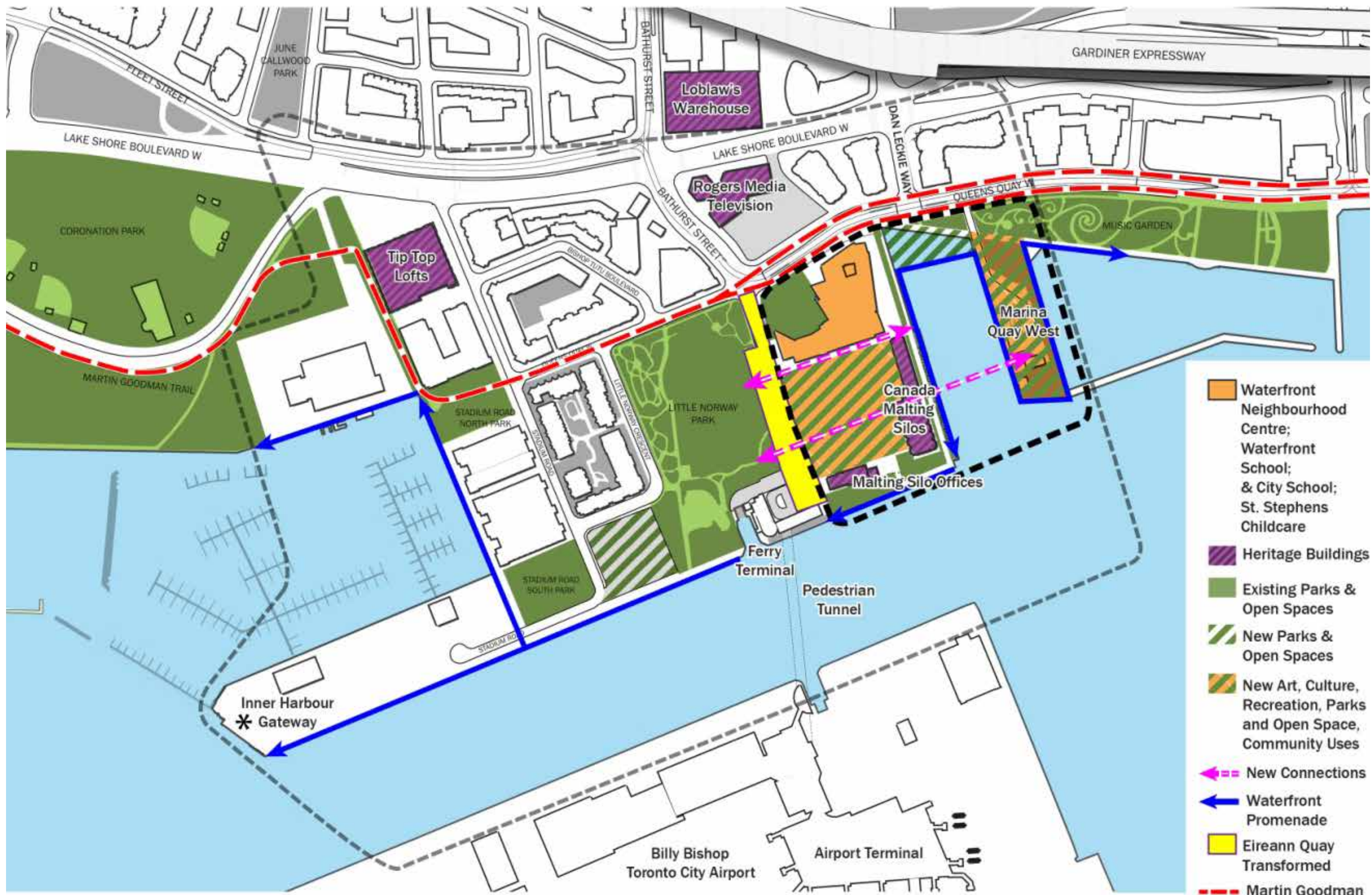


Guiding Principles for a Complete Community



Bathurst Quay Neighbourhood Plan

A Framework Plan

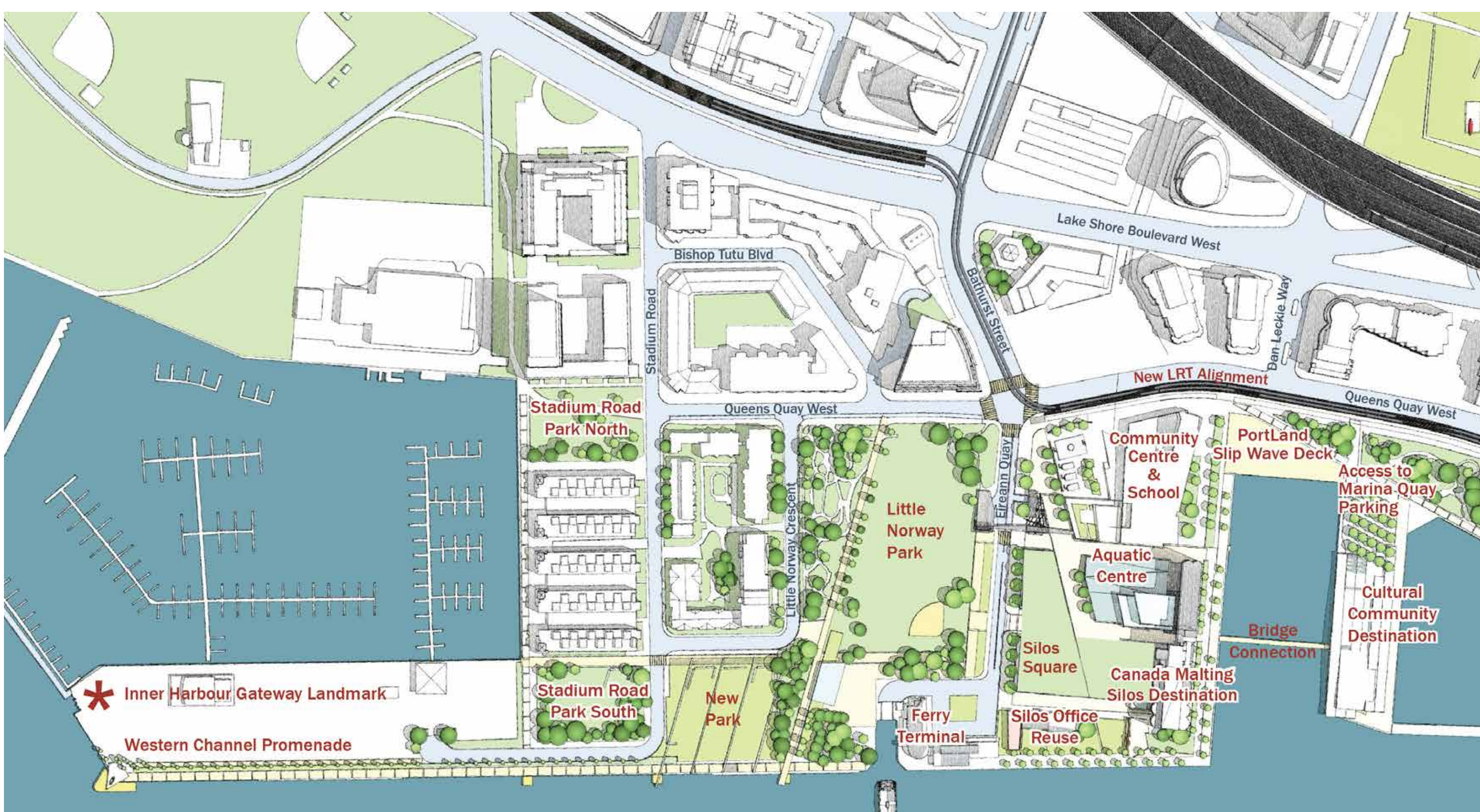


The Framework Plan illustrates the Vision to complete the community including transforming the Canada Malting Silos Site and Marina Quay West into a new Placemaking Waterfront Destination.

Main Features

- A focus on arts, culture, parks & opens space and community uses.
- The adaptive reuse of the Silos and Executive Building.
- Marina Quay West as the site for new cultural and/or community facilities.
- Aquatic Centre and community and cultural & facilities on the Silos Site.
- A bridge to link the Silos Site and Marina Quay West.
- A new waterfront park, promenade and Portland Slip Wave Deck.

Demonstration Plan



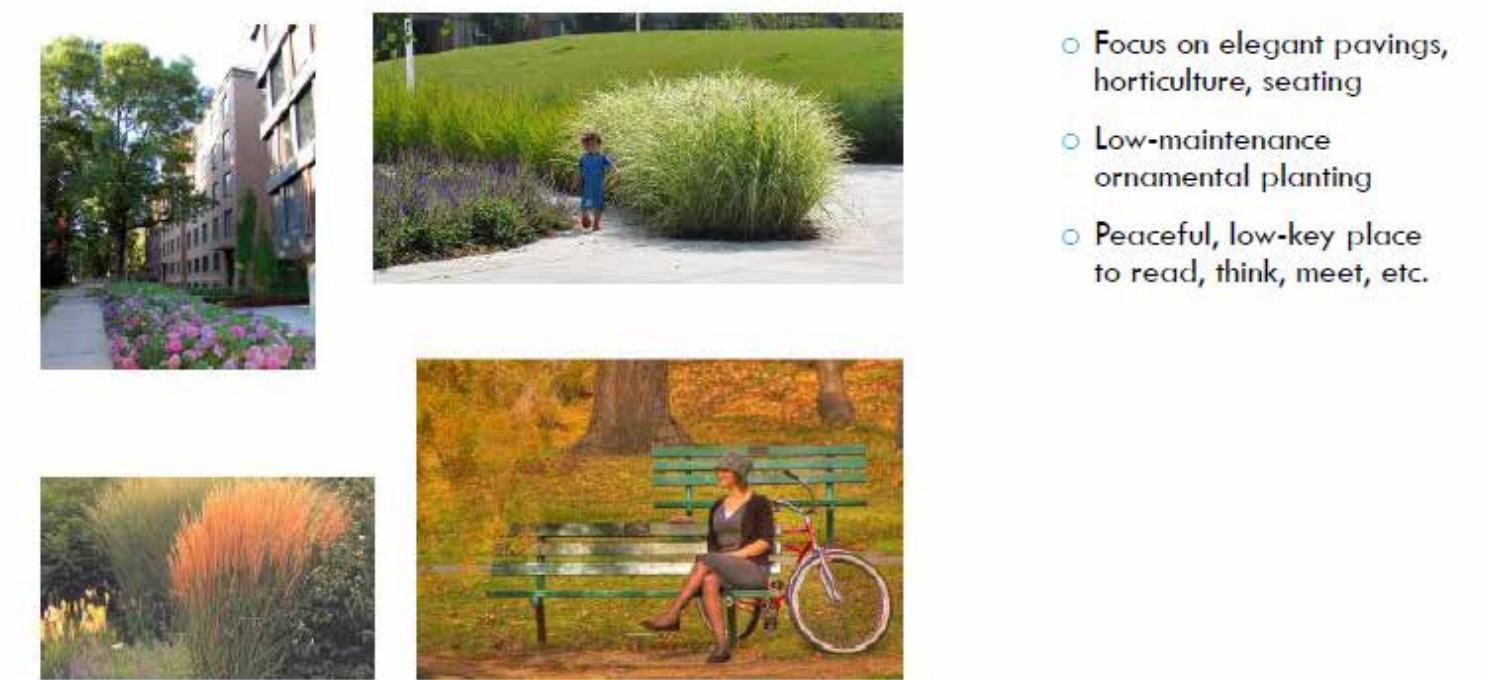
The Demonstration Plan illustrates how new arts, culture, parks and open spaces, community services and facilities, pedestrian connections, and special routes and places could be achieved to complete the community.

An Action Plan for Success

Creating a Remarkable Public Realm

1. What Is Happening Today?

- Public Realm & Streetscape Plan – design for improvements to open spaces on the Silos Site, along streets and park edges.
- Stadium Road North and South Park Improvement Plan – new pathways, landscape & recreation amenities, and a wider Martin Goodman Trail



- Focus on elegant pavings, horticulture, seating
- Low-maintenance ornamental planting
- Peaceful, low-key place to read, think, meet, etc.

“CLASSIC” CONCEPT – STADIUM ROAD PARK

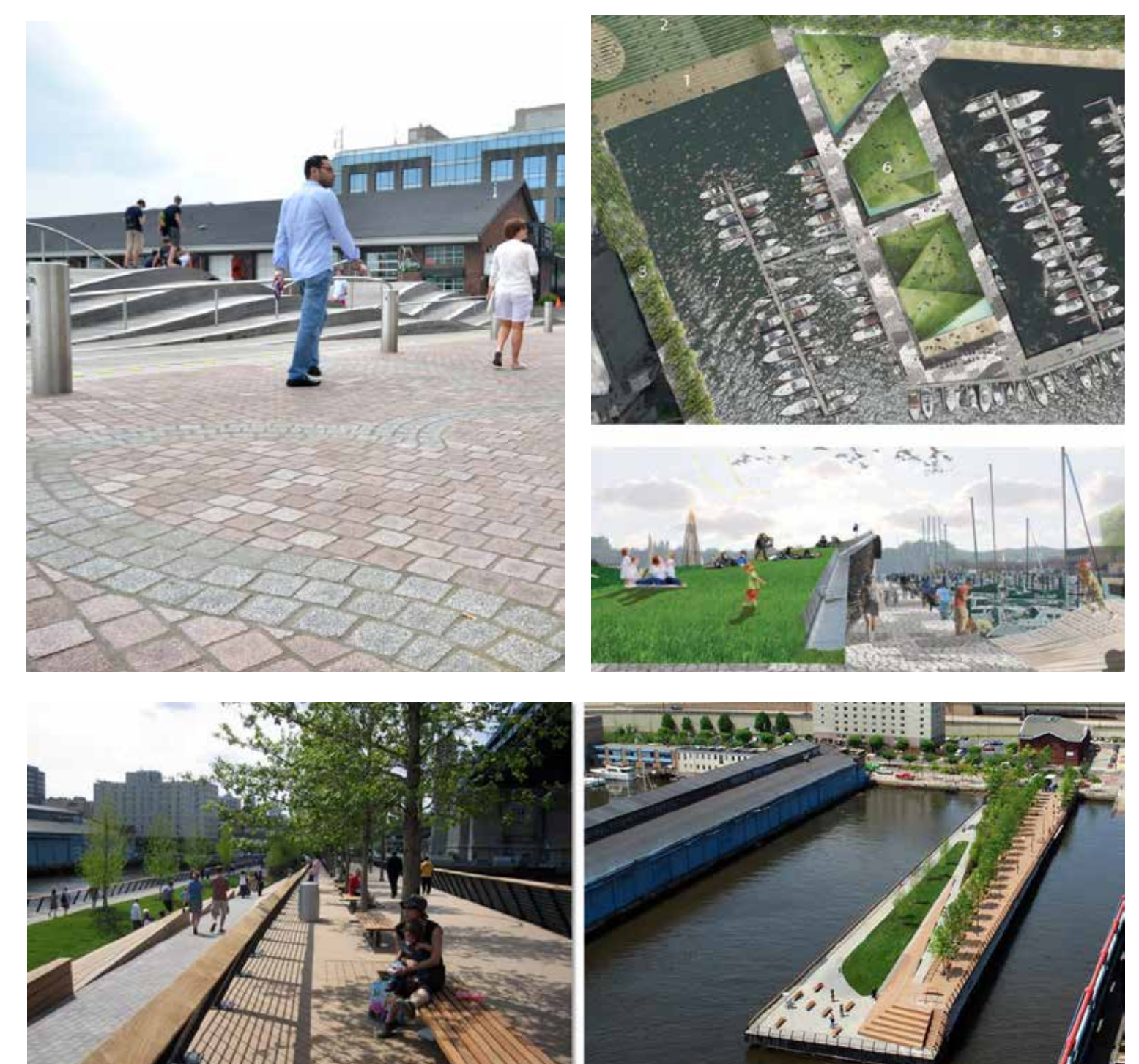


- Focus on small gathering spaces
- Impromptu & organized picnics, performances, conversations

“COMMUNITY” CONCEPT – STADIUM ROAD PARK

2. The 5 to 10 Year Plan

- Eireann Quay appearance improved & pedestrian experience enhanced– wider sidewalks, trees, weather protection, & benches.
- Stadium Road Parks North & South improved – new landscape & recreation amenities, enhanced pedestrian & cycling connections.
- Waterfront Promenade extended along the Portland Slip & Ireland Park
- Portland Slip Wave Deck completed.
- Marina Quay improved as a new open space - new activities, landscaping, special paving treatments, lighting, seating.



3. In the Long Run

- Eireann Quay transformed as the neighbourhood main street - new activities, wider sidewalks, generous landscape zones, public art, & seating.
- New Western Channel Park along the water’s edge.
- Western Channel Waterfront Promenade and Gateway punctuated by a landmark to highlight this historic entrance to the inner harbour.

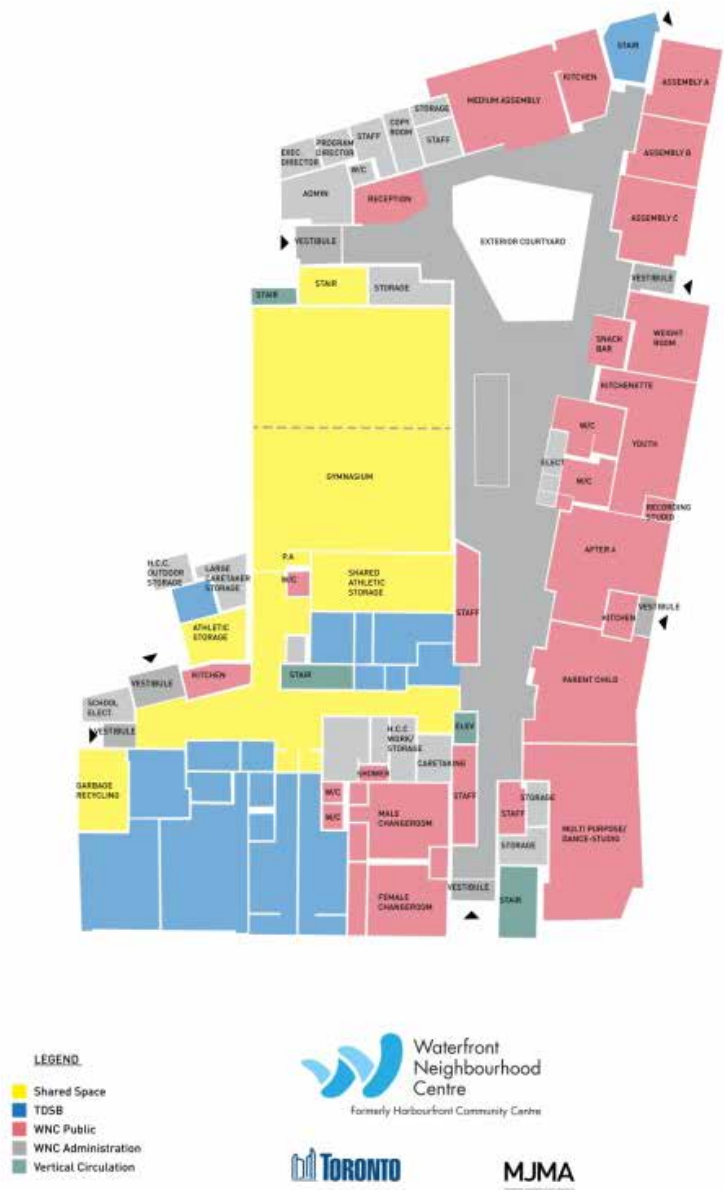


An Action Plan for Success

Enhancing Community Services & Facilities

1. What Is Happening Today?

- Waterfront Neighbourhood Centre Facility Needs Assessment to identify current and future programming and space requirements.



LET'S TALK ABOUT YOUR WATERFRONT NEIGHBOURHOOD CENTRE!

On Wednesday, November 16, 2016, drop by anytime and tell us how you would improve our building for the future.

The Waterfront Neighbourhood Centre, in collaboration with the City of Toronto, is undertaking a "Facility Needs Assessment" for this building. The assessment will help determine how well this building is meeting the needs of its many users, and develop recommendations for improving the facility in the future.

Here are some of the things we'd like to talk to you about:

- Think Today:** How well does the building accommodate current programming? What current uses would benefit from improved and/or expanded space?
- Think Tomorrow:** Is the building able to meet the needs of a growing waterfront community? What future uses will the centre need to accommodate?
- Think Big:** What is the number one improvement you would make to this building today?
- Think Little:** What small improvement(s) would make this building work better for its users?

So drop by and help shape the future of the Waterfront Neighbourhood Centre!

MMA Architects & members of the planning team will be in the central foyer ALL DAY (from 8:30am - 5:30pm) on Wednesday, November 16. No need to schedule a time! Just drop in, enjoy some free refreshments, a coffee and giveaways. Share your ideas and aspirations for improving this centre.

If you have questions about the study process, or cannot join us on November 16 but would like to share your ideas with the project team, please contact Bryan Brown at the City of Toronto: 416-708-2742 or via email at bbrown@toronto.ca

627 Queens Quay West (Bathurst & Queens Quay)
Toronto, ON M5S 2J2
www.waterfronttoronto.ca
416.352.1500

2. The 5 to 10 Year Plan

- Aquatic Centre analysis to further investigate Silos Site opportunity.
- Waterfront Neighbourhood Centre improvements including new space to accommodate community needs.
- Improved open spaces around the community facilities for shared use.

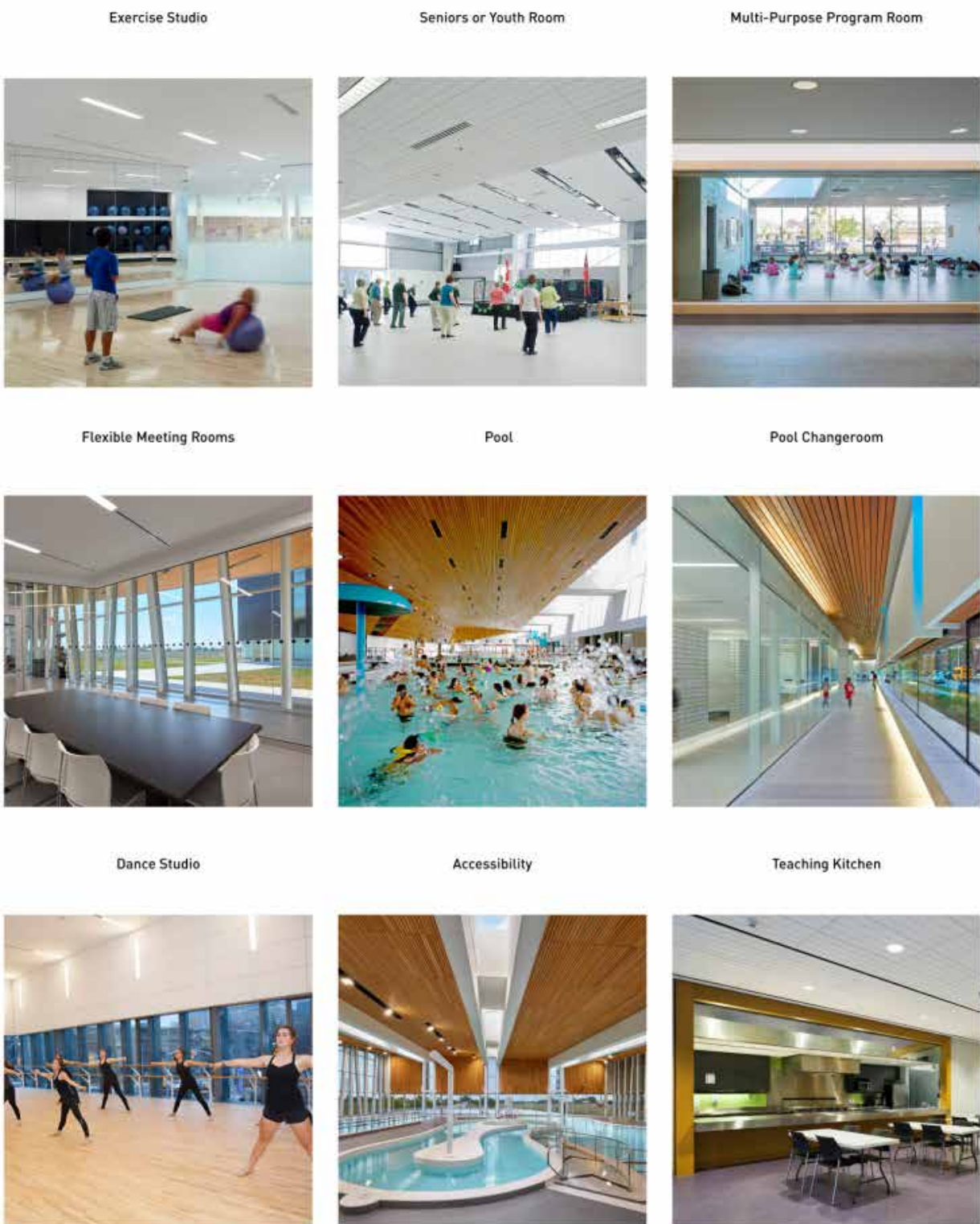


3. In the Long Run

- A new Aquatic Centre on the Silos Site integrated with the new community facilities.



Regent Park Aquatic Centre

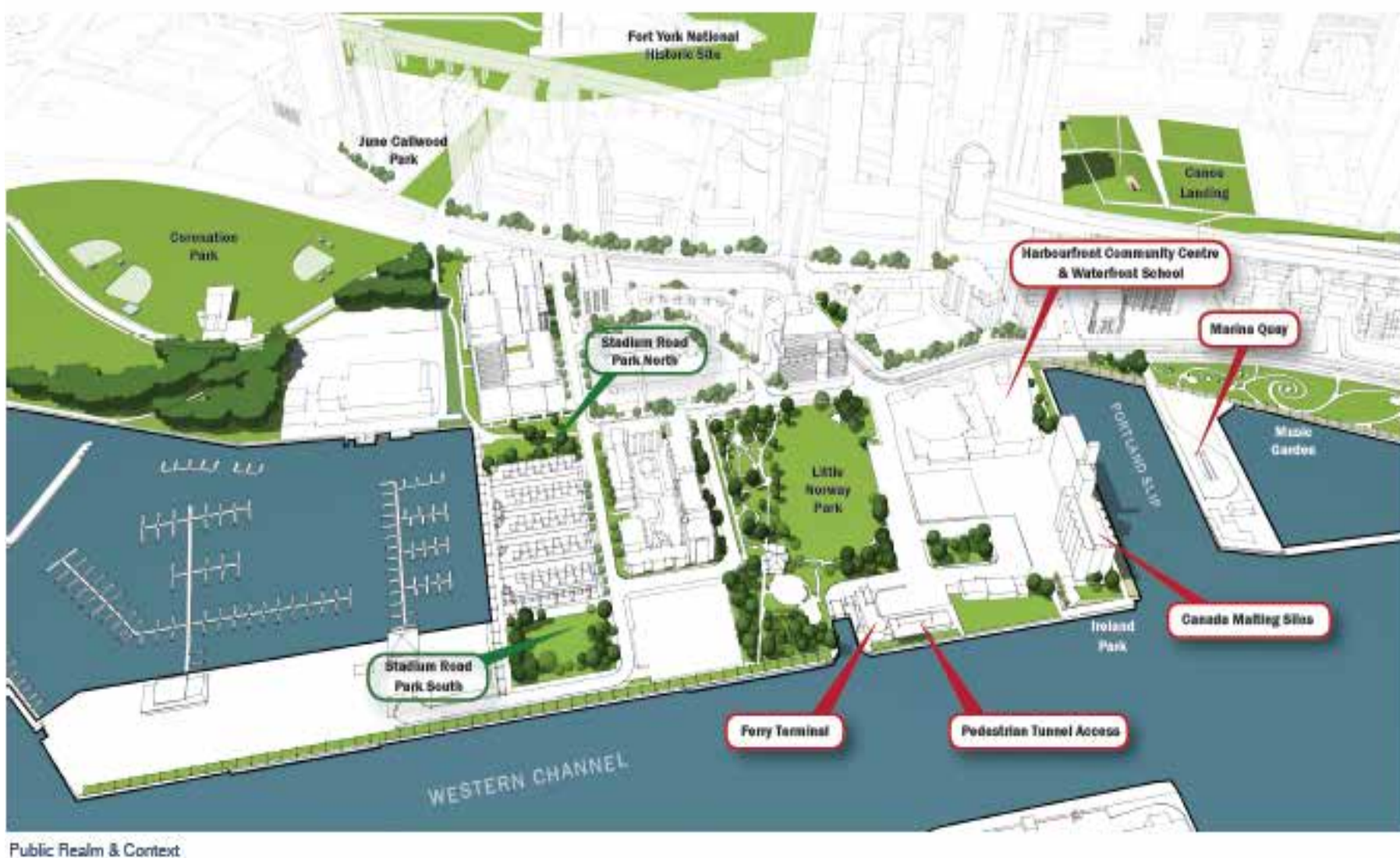


An Action Plan for Success

Re-Energizing The Silos Site & Marina Quay West

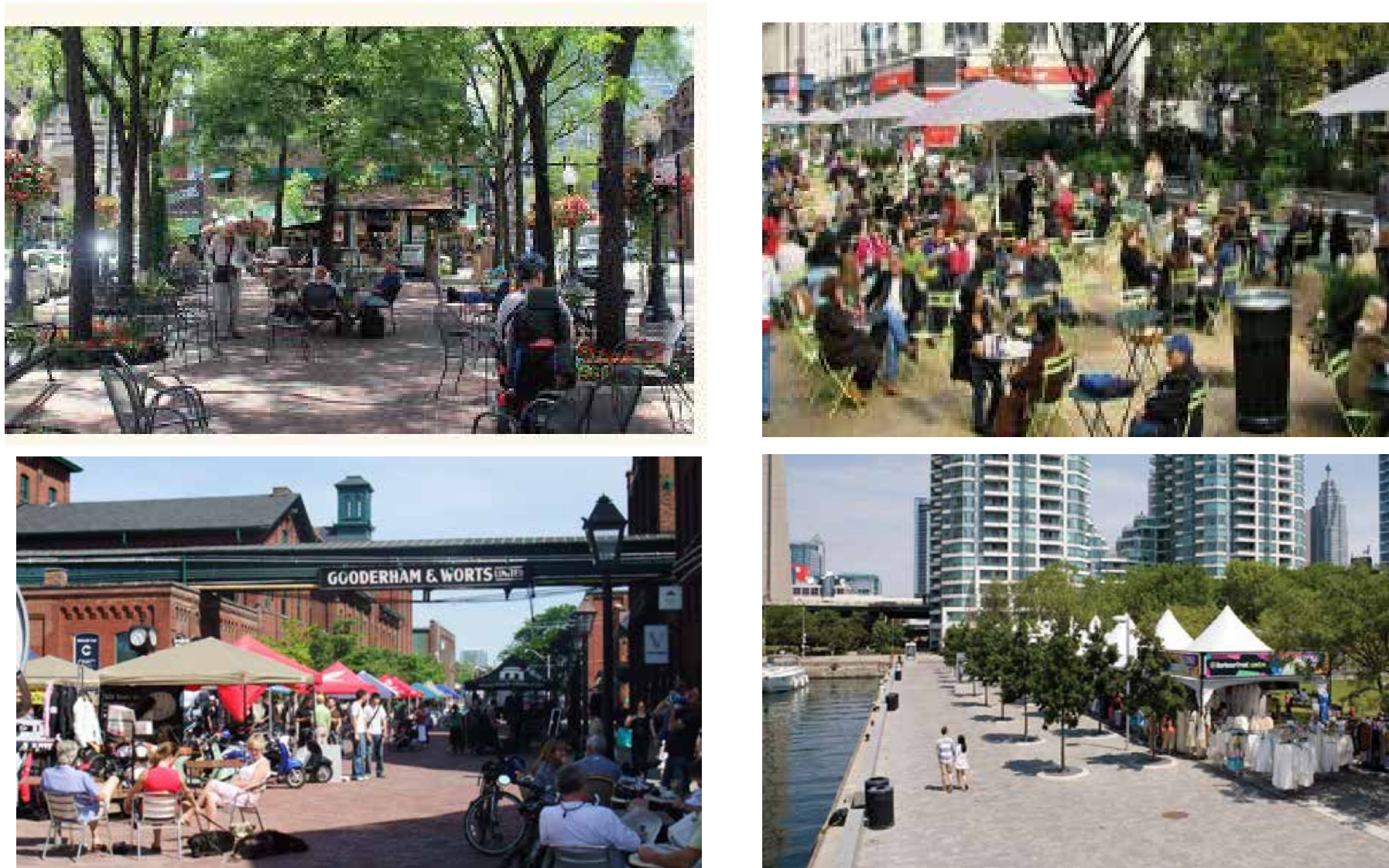
1. What Is Happening Today?

- A Vision for a new Placemaking Waterfront Destination focussed on arts, culture, parks and open space & community uses on the historic Canada Malting Silos Site and Marina Quay West.



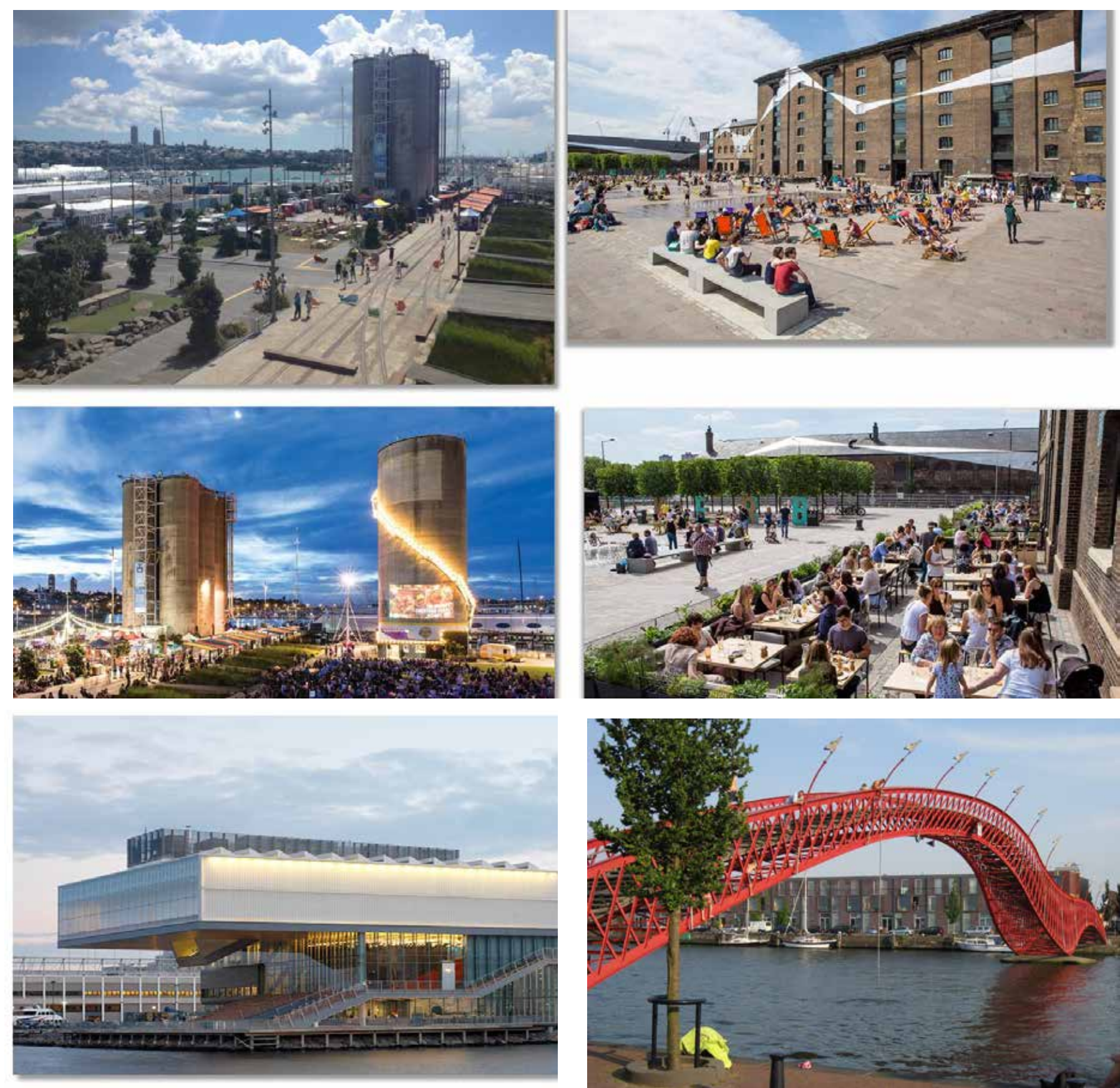
2. The 5 to 10 Year Plan

- A Strategy to bring new activity to the Silos Site - markets, food trucks, arts, cultural, and community festivals.
- Improved open spaces on the Silos Site - a new public square as a gathering place for the neighbourhood.
- A Plan for the adaptive re-use of the Silos and Executive Building, and new cultural and/or community uses on Marina Quay West.



3. In the Long Run

- Silos Site & Marina Quay West as a new Waterfront Destination.
- Arts, culture, parks and open space, and community uses.
- Adaptive re-use of the Silos and Executive Building
- A new Marina Quay West cultural and/or community facility.
- Silos Site & Marina Quay West linked by a pedestrian bridge.



Institute of Contemporary Art, Boston

An Action Plan for Success

A New Focus On Movement

1. What Is Happening Today?

- Martin Goodman Trail widened at the Portland Slip.
- Off-street taxi staging on the Silos Site to manage traffic.
- Airport pedestrian tunnel constructed to improve pedestrian access & reduce traffic congestion.



2. The 5 to 10 Year Plan

- Martin Goodman Trail widened at Stadium Road Park.
- Eireann Quay improvements – wider sidewalks, street trees, and pedestrian amenities.
- New bike share stations and cycling infrastructure.
- Traffic operations assessment of the Bathurst Street, Lakeshore Boulevard, and Fleet Street intersection.
- Feasibility study of full or partial closure of Fleet Street.
- Eireann Quay, Queens Quay, Intersection Improvement.



3. In the Long Run

- Taxi staging & parking moved underground.
- Stadium Road parking lot removed and new Waterfront Park created.
- Queen's Quay transit, cycling & pedestrian improvements extended from Spadina Avenue to Bathurst Street.
- New bridge over Portland Slip to link the Silos Site and Marina Quay West.



Preliminary Policy Directions

The Vision, Guiding Principles, and Action Plan are proposed to be expressed in planning policies including:

- Maintaining the Parks & Open Space Areas land use designation on City-owned lands within Bathurst Quay.
- Developing a more detailed Plan to transform the Canada Malting Silos Site and Marina Quay West into a Waterfront Destination including:
 - A focus on arts, culture, parks & open space, and community uses.
 - The conservation and adaptive re-use of the historic Canada Malting Silos and Executive Building
 - Marina Quay West as the site for a new cultural and/or community facility.
 - An Aquatic Centre and new Community Services and Facilities on the Silos Site.
 - A bridge to link the Silos Site and Marina Quay West.
- Developing a strategy including opportunities for partnerships to bring new uses and activity to the Canada Malting Silos Site, the Executive Building and Marina Quay West in the near term as catalysts for longer term re-vitalization.
- Developing a Streetscape and Public Realm Plan to provide a framework for public realm enhancements over time including:
 - improved north to south and east to west connections for pedestrians and cyclists;
 - improved physical and visual access to the water's edge; and
 - new and existing parks, open spaces and streetscapes designed for a variety of experiences and functions.



Bathurst Quay Neighbourhood Plan

Next Steps

- Completing the Waterfront Neighbourhood Centre Facility Needs Assessment.
- Completing the Public Realm & Streetscape Plan.
- Advancing Quick Starts
- Developing a more detailed Plan for the Canada Malting Silos site and Marina Quay West.
- Final Report to Community Council: Spring 2017



Stay Involved

The Bathurst Quay Neighbourhood Plan will outline a vision and strategy for the future of the neighbourhood. To be successful, the Neighbourhood Plan must reflect the community's values and aspirations.

Please feel free to share your ideas and comments with a member of the project team in attendance, complete and drop off a comment sheet before you leave and/or submit your comments using the contact information below.

Please Contact:

Sue McAlpine, Senior Planner
City Planning, City of Toronto
Tel: (416) 392-7622
Email: smcalpin@toronto.ca

More information on the
Bathurst Quay Neighbourhood Plan
can be found at:
www.toronto.ca/planning

Thank You For Participating