

Beare Hill Park

DETAILED DESIGN

Public Information Meeting

JUNE 27/ 2017

Beare Hill Park

DETAILED DESIGN

prepared by

WSP

PLANNING, LANDSCAPE ARCHITECTURE AND URBAN DESIGN
ENVIRONMENTAL SERVICES

in consultation with

City of Toronto

PARKS, FORESTRY AND RECREATION
SOLID WASTE MANAGEMENT & TECHNICAL SERVICES
CITY PLANNING

PARKS CANADA

TRCA

TORONTO ZOO

CITY OF PICKERING

PUBLIC PARTICIPANTS

Overview

- Project Background
- How Did We Get Here
- Guiding Principles of the Master Plan
- Project Objectives
- Approach
- Site Context
- Existing Conditions
- Proposed Trail Routing and Design Options

Project Background

- Former landfill site, closed in 1982
- Re-vegetated to mix of forest and meadow
- Methane Conversion Plant was operated from 1996 -2015
- Master Plan
- Species at Risk (SAR), Cap Integrity, and Vegetation Management Plan completed

How Did We Get Here?


People & Organizations

City Council,
Divisions
Parks Canada
Toronto and Region
Conservation
Authority (TRCA)
Toronto Zoo
Other Municipalities
Federal and
Provincial Public
Agencies



Outputs

Vision
Existing Conditions
Analysis
Guiding Principles
Master Plan
Additional Studies



Current Status

Detailed Design

Guiding Principles of the Master Plan

- The design of the Park will acknowledge and celebrate its urban context.
- The Park will support habitat protection, revitalization and enhancement.
- The Park will provide opportunities for inclusive use.
- The views and vistas that have resulted from the site's historic and cultural use will be maintained and enhanced.
- The Park will provide for a range of recreational experiences and encourage engagement with the site and adjacent open space.
- The Park will recognize the educational opportunities that natural environments provide.
- The design of the Park will be bold in its approach to integrating cultural and natural heritage.

Objectives of this Detailed Design Project

- Make public safety a priority
- Detailed and sustainable trail design and implementation
- Ecological protection and enhancement of vegetative cover and SAR habitat
- Protection of the landfill cover and function
- Design of selected trails infrastructure including signage, seating, viewing opportunities

Approach

- **Protect** existing forest and wetland habitat, use by species at risk, existing vantage points and views
- **Enhance** meadow habitat, forest linkages, educational opportunities for engaging with the site's natural and cultural heritage through recreation and interpretation
- **Consider** existing regeneration plantings, opportunities for off-road cycling
- **Provide** inclusive access and visitor amenities

Site Context

Legend:

 Rouge National Urban Park



Existing Forest



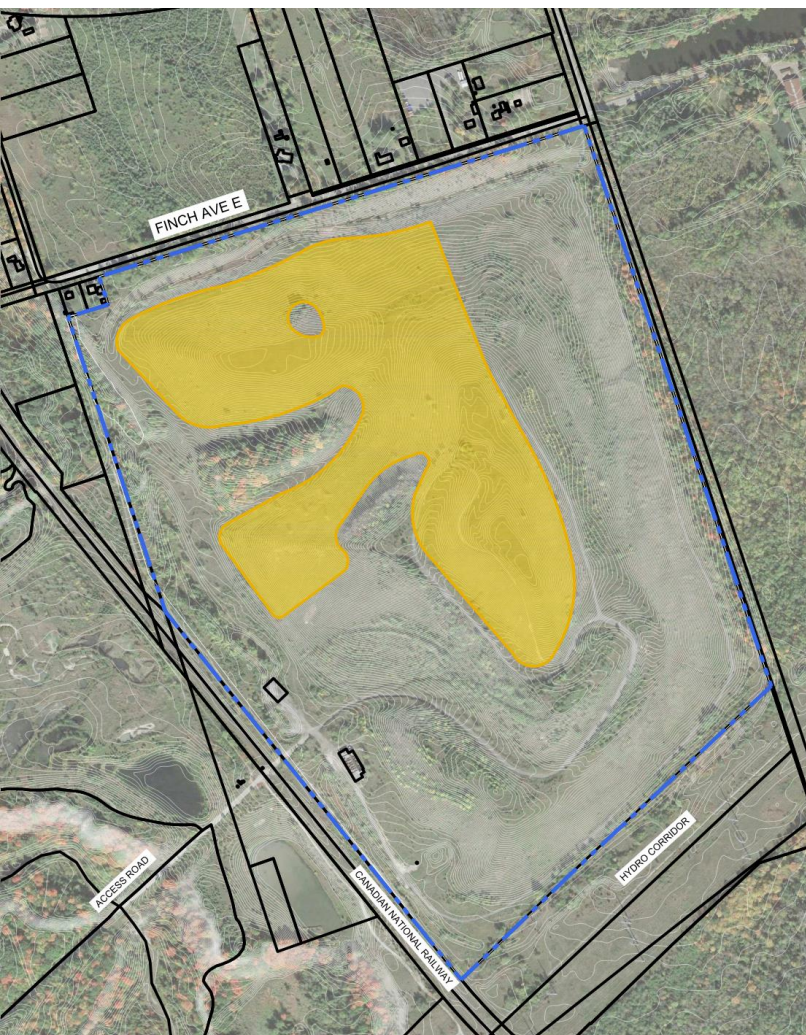
Existing Meadow Habitat



Existing Regeneration Plantings



Existing SAR Habitat



Existing Conditions Compiled

Legend:



EXISTING SAR HABITAT



EXISTING FOREST AREA



EXISTING REGENERATION PLANTINGS



EXISTING MEADOW HABITAT



PROPERTY LINE



Opportunities

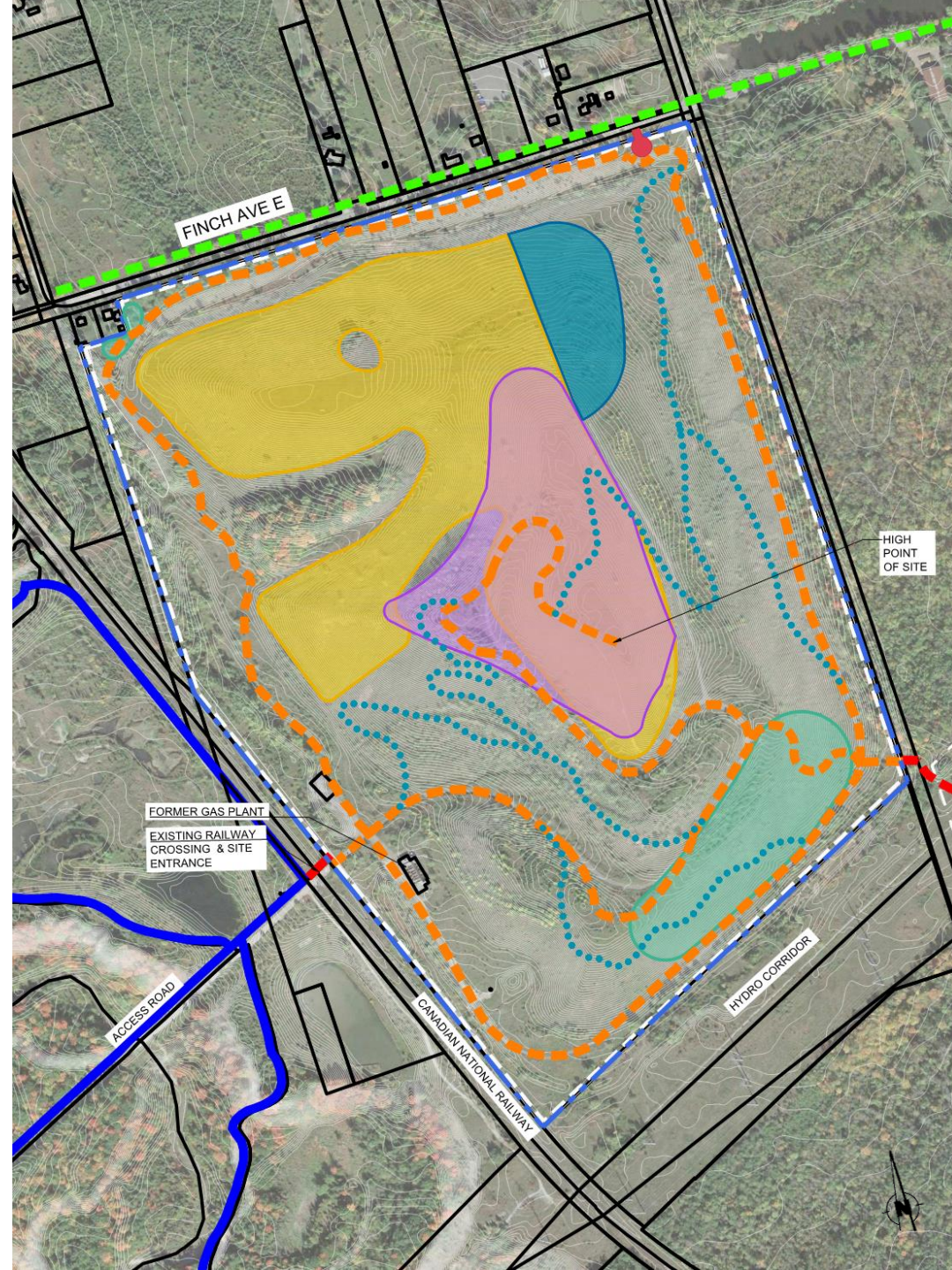
Legend:



Proposed Trails

Legend:

	PROPOSED ACCESSIBLE MULTI-USE TRAIL
	PROPOSED MULTI-USE SINGLE TRACK
	OPPORTUNITY FOR TREE PLANTING
	PROTECTED VISTAS
	PROPOSED ENHANCED MEADOW
	EXISTING SAR HABITAT
	PROPOSED PARKING LOT
	EXISTING TRAIL - ROUGE PARK
	EXISTING INFORMAL TRAIL
	ON-ROAD CYCLING CONNECTION (CITY OF TORONTO BIKE PLAN)
	PROPERTY LINE
	EXISTING BUILDING



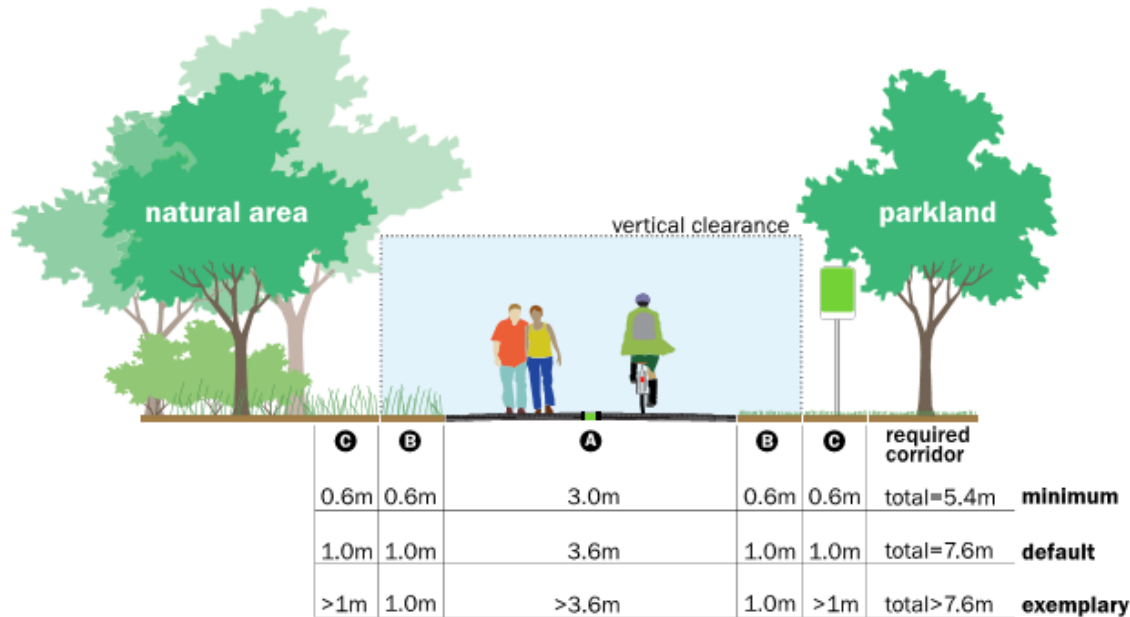
Potential Trail Types

Accessible Multi-use Trail

- A** Multi-use Trail Surface
- B** Lateral Clearance
- C** Furnishing Zone

Trail Surface:

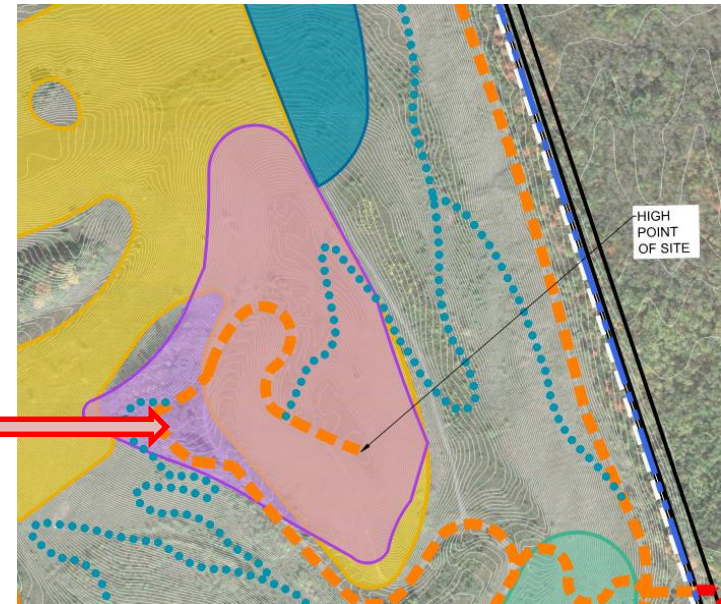
- Firm
- Stable



City of Toronto – Primary Multi-use Trail

Source: Toronto Multi-use Trail Design Guidelines, 2014

PROPOSED ACCESSIBLE MULTI-USE TRAIL



Former service access to High Point, to become base for Shared Use Trail to High Point

Potential Trail Types

Multi-Use Single-Track

TYPE 3

- Natural surface single track trail.
- Trail tread may be constructed or established by clearing a corridor and marking the route.
- Whenever possible use natural native material from site.
- Minimum trail width of 0.25 metre.
- Provide minimal signage.
- Hand-built and maintained.

Zone II, III, IV, V (Wilderness, Natural Environment, Outdoor Recreation and Park Service).
May be found in Zone I (Special Preservation) under exceptional circumstances.

Suitable for visitors who have trail experience and are prepared (*proper equipment and water*).

Moderate, Difficult or Route

DIFFICULT

- Suitable for visitors who have trail experience and are prepared (*proper equipment and water*).
- Variety of surface types including non-established surface.
- Estimated time to complete the trail may exceed five hours.
- May experience major elevation gain with long steep sections.



0 – 15+ km

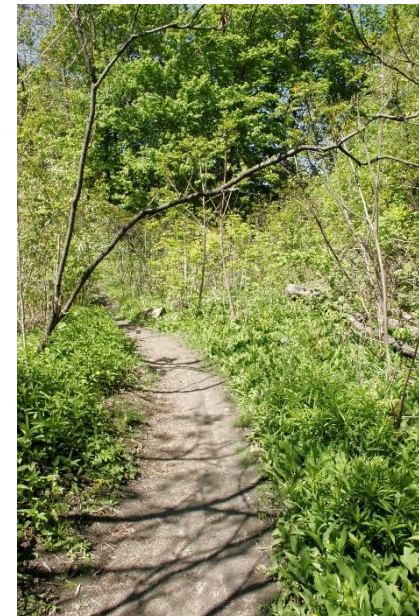
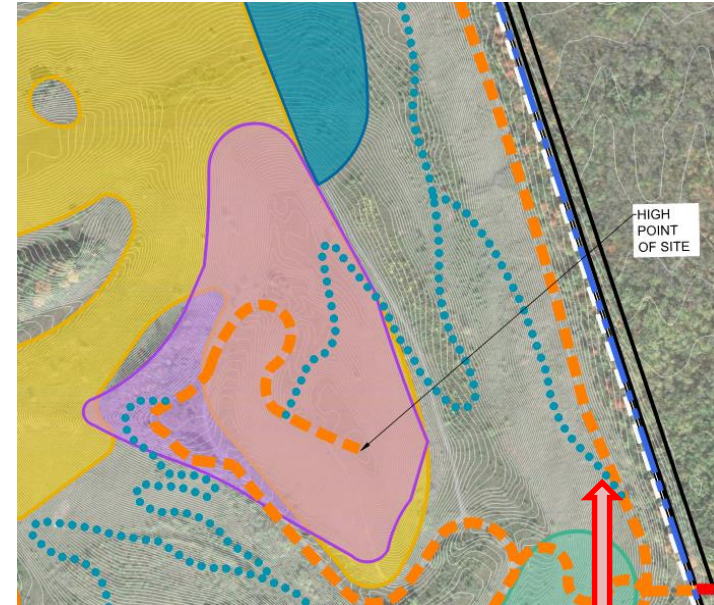
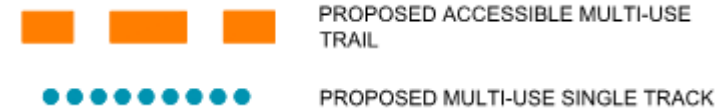
Rolling with many steep sections that may continue for long periods

Typical Elevation Gain

500+ metres

Natural surface

- May be loose or may not exist



Example of Single Track Trail in Crothers Woods, Toronto

Parks Canada – Type 3 Trail Trail

Source: Parks Canada Trail Type Classification

Trail Signage

Trail head signage must be designed to be easily understood and detectable by users of all abilities

- **Trail length**
- **Type of surface**
- **Average and minimum trail width**
- **Average and maximum running slope and cross slope**
- **Location of amenities**

This enables users to make an informed personal decision about which trails they will use, based on their own level of ability / mobility.

Trail Signage

- The City of Toronto is currently developing a set of signage standards as part of the **Toronto Parks and Trails Wayfinding Strategy**
- Trail sign design for Beare Hill Park will follow the new design standards at the appropriate time
- Sign elements will include:
 - Trail head / gateway at entry points
 - Trail markers along trail routes and at key decision points
 - Interpretive signs where there is a story to be told (natural, cultural point of interest, viewpoint etc.)

Lookouts and Signage

Legend:



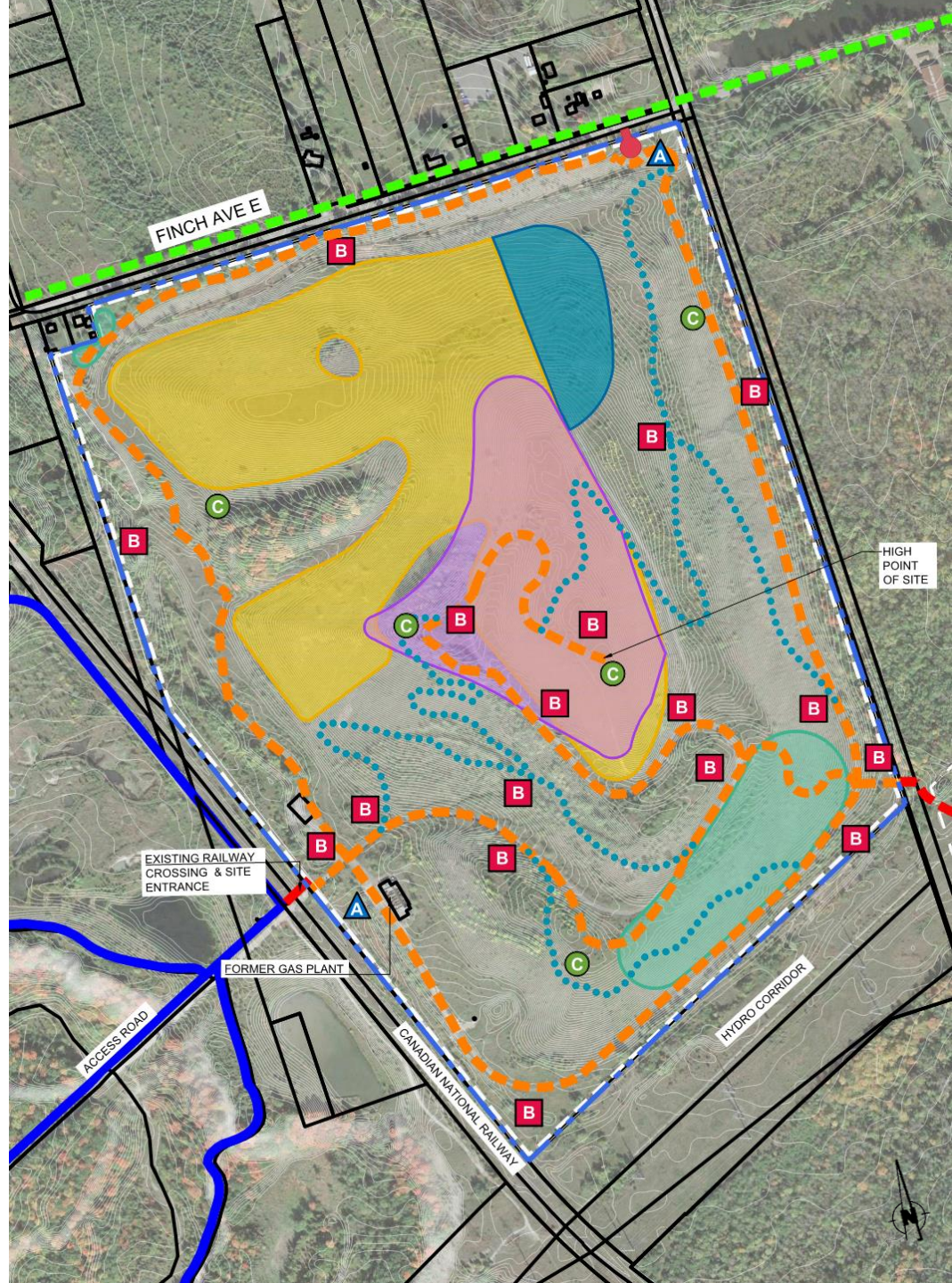
GATEWAY / TRAIL HEAD (2)



TRAIL MARKER (16)



INTERPRETIVE (5)



Trail Signage



Parking Lot



Next Steps

- **Immediate**

- Confirming firm and stable surface type for main trail
- Detailed design for trails and rest stations
- Implementation of trails and parking area

- **Following Phases
(After trails implementation)**

- Detailed Design for weather shelter at view point
- Consideration of planning for additional amenities in partnership with local partners





Thank You