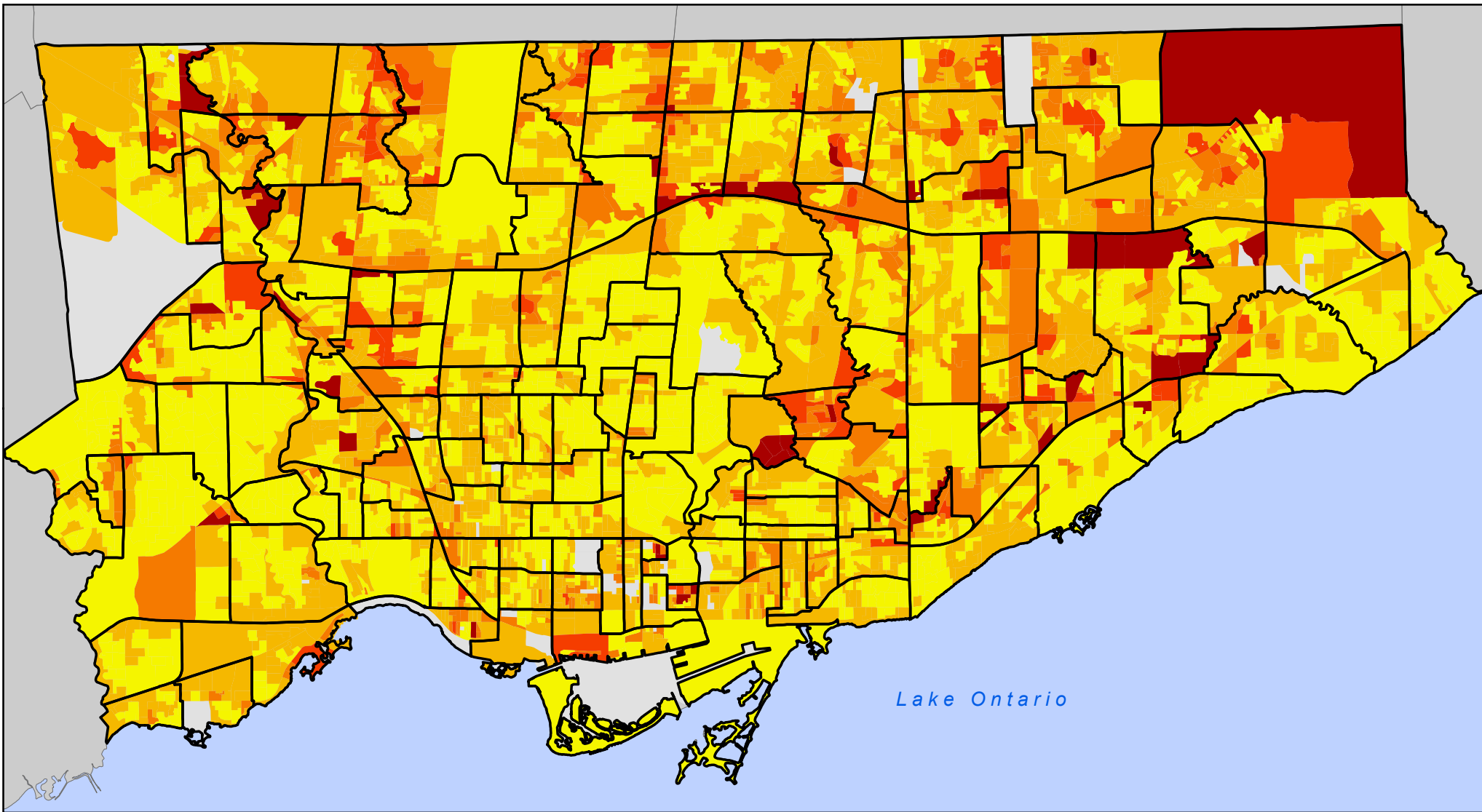


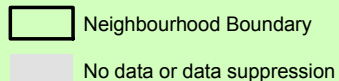
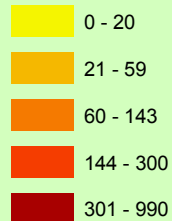
# Economic Families Under the Low-Income Cut-Off, 2006

by Dissemination Area



## Legend

### Economic Families Under LICO



Notes: Rate is Before Tax.



Source: Statistics Canada, Census 2006; City of Toronto.

Copyright (c) 2008 City of Toronto. All Rights Reserved.  
Published: June 2008  
Prepared by: Social Policy Analysis & Research  
Contact: [spar@toronto.ca](mailto:spar@toronto.ca)