



PLANNING A GREAT CITY, **TOGETHER**



DON MILLS CROSSING

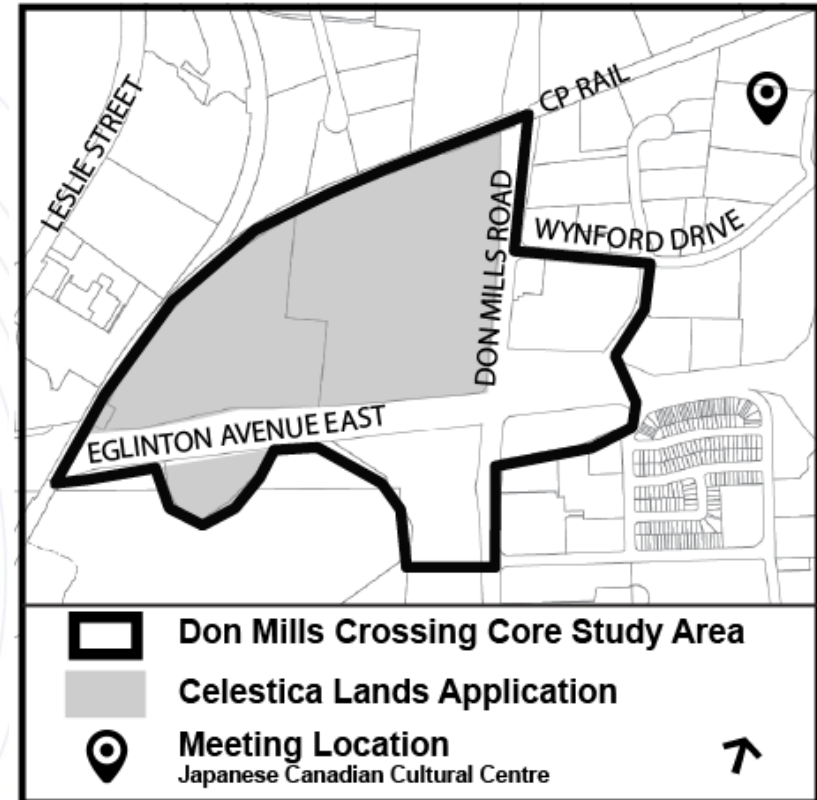
Community Building at
Eglinton and Don Mills

PUBLIC MEETING AND OPEN HOUSE: Don Mills Crossing Phase 2 Celestica Development Applications

February 21, 2017

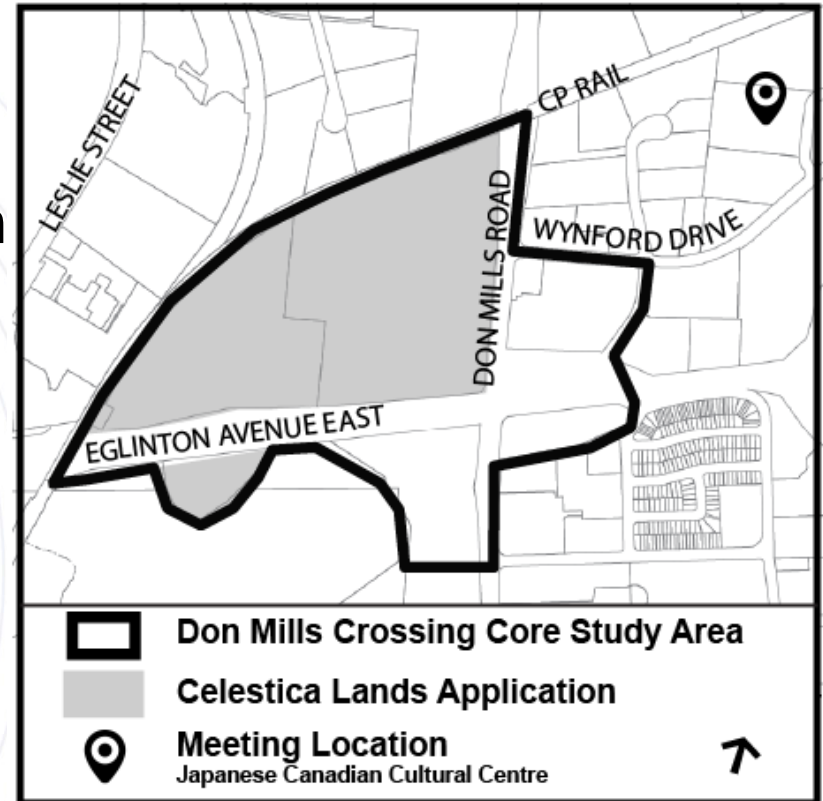
PURPOSE OF TONIGHT'S MEETING

- Engage the community on the Don Mills Crossing Study and development applications for the Celestica Lands.



AGENDA

- **Presentation (30 minutes)**
 - City Staff
 - Celestica Application Team
- **Open House (90 minutes)**
 - Discussion and questions at four stations with boards to document feedback
 - Your opportunity to scope future public consultation.

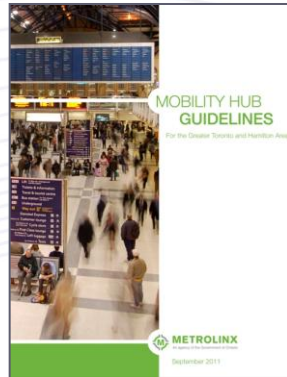
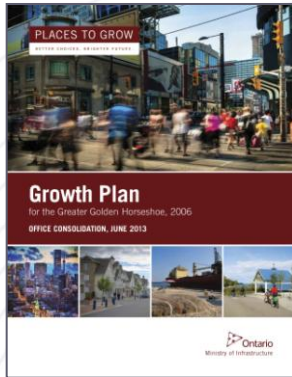


WHY STUDY DON MILLS & EGLINTON?

- **Crosstown LRT**
 - opportunity to leverage transit investment for area benefit
- **City Council Direction**
 - building on Eglinton Connects outcomes (2014)
 - decision to reposition Celestica lands for broader mix of uses (2016)



WHAT GUIDES A STUDY?

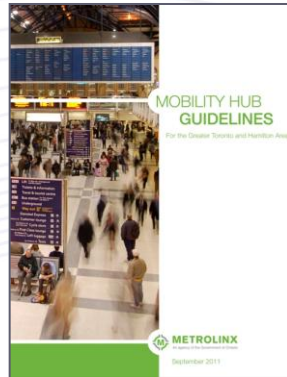
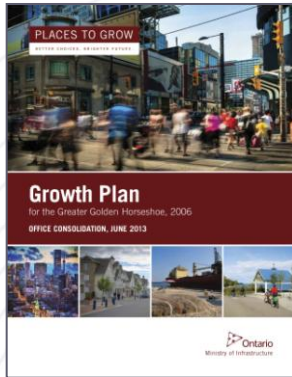


Growth Plan & Mobility Hub Guidelines tell us to create transit-supportive place



The **Official Plan** tells us to combine land use and transportation to leverage public investment and create a liveable place

WHAT GUIDES A STUDY...



Growth Plan & Mobility Hub Guidelines tell us to create transit-supportive place



The **Official Plan** tells us to combine land use and transportation to leverage public investment and create a liveable place

...ALSO GUIDES DEVELOPMENT REVIEW.

HOW DO I FIT IN?



Facts & Figures

Demographics,
infrastructure analysis,
physical context



Planning Policies

Provincial Policy
Statement, Growth Plan,
Official Plan

City Planning Evaluation & Recommendation



Law

Planning Act, By-laws,
Council decisions, Ontario
Municipal Board



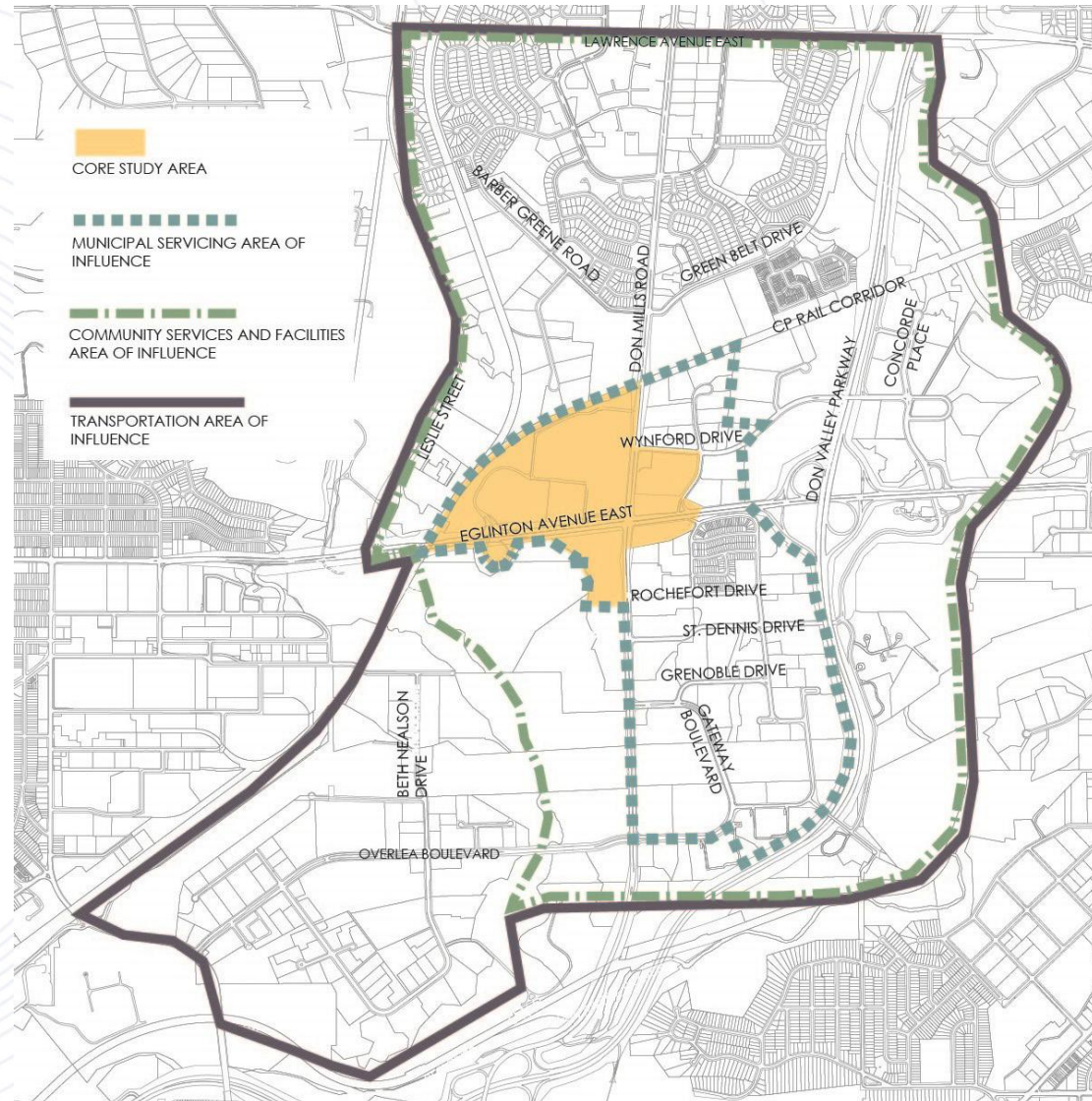
People

Local Community &
Stakeholders, City
Departments & Agencies

WHERE DO WE START?

We need to grow, but how do we do that in a way that benefits residents and businesses?

How do we use this transit investment to benefit the community and create a place where people can live, work and play?



WHAT IS DON MILLS CROSSING?

Building on the work of Eglinton Connects, Don Mills Crossing has three phases.



Public consultation will occur throughout all phases of Don Mills Crossing

WHAT HAVE WE LEARNED?

Don Mills Crossing Profile Report
focused on a number of key city
building themes:

- Public Realm, Parks and Open Space
- Built Form and Land Use
- Transportation and Servicing Infrastructure
- Built and Natural Heritage
- Community Services and Facilities



STUDY



HISTORY



PLACE



PEOPLE



POLICY

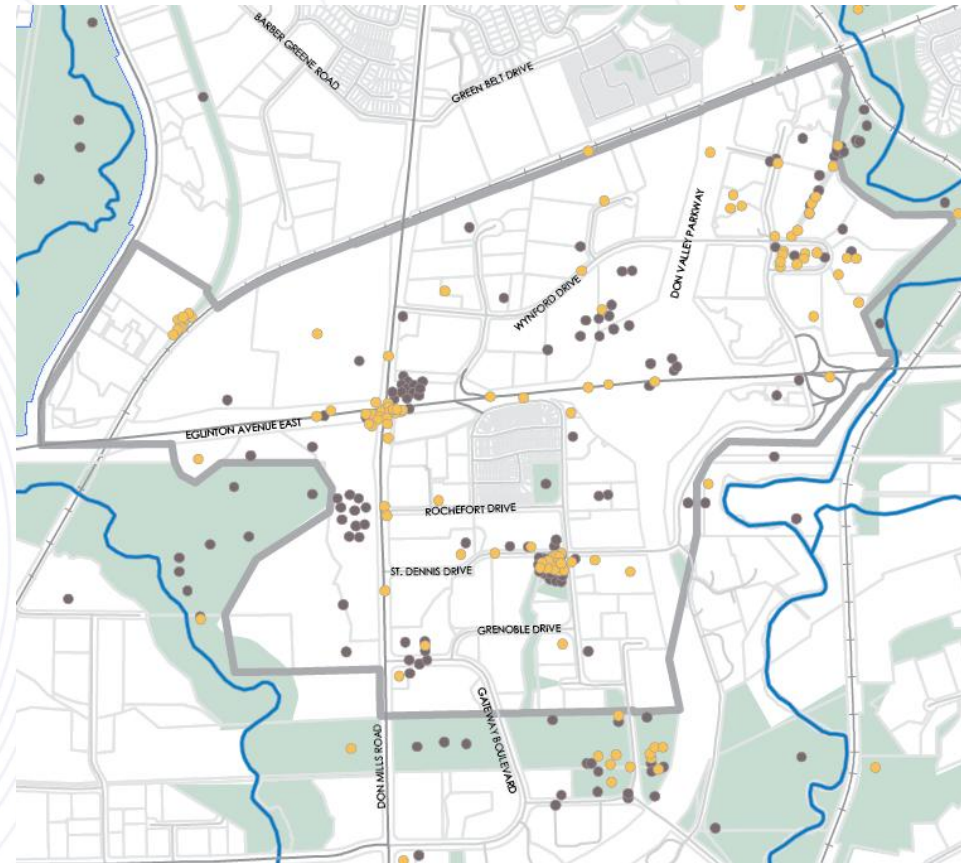


FUTURE

WHAT HAVE WE HEARD?

Key themes expressed online and in person, through Phase 1 of Don Mills Crossing:

- Connections
- Pedestrian Experience
- Mobility Constraints
- Facilities Well Used
- Retail Needed



● Favourite Places ● Needs Improvement

CONNECTING TO THE CITY

A urban fabric is largely lacking from the Core Study Area which needs to be connected to its surroundings.



CONNECTING TO THE CITY

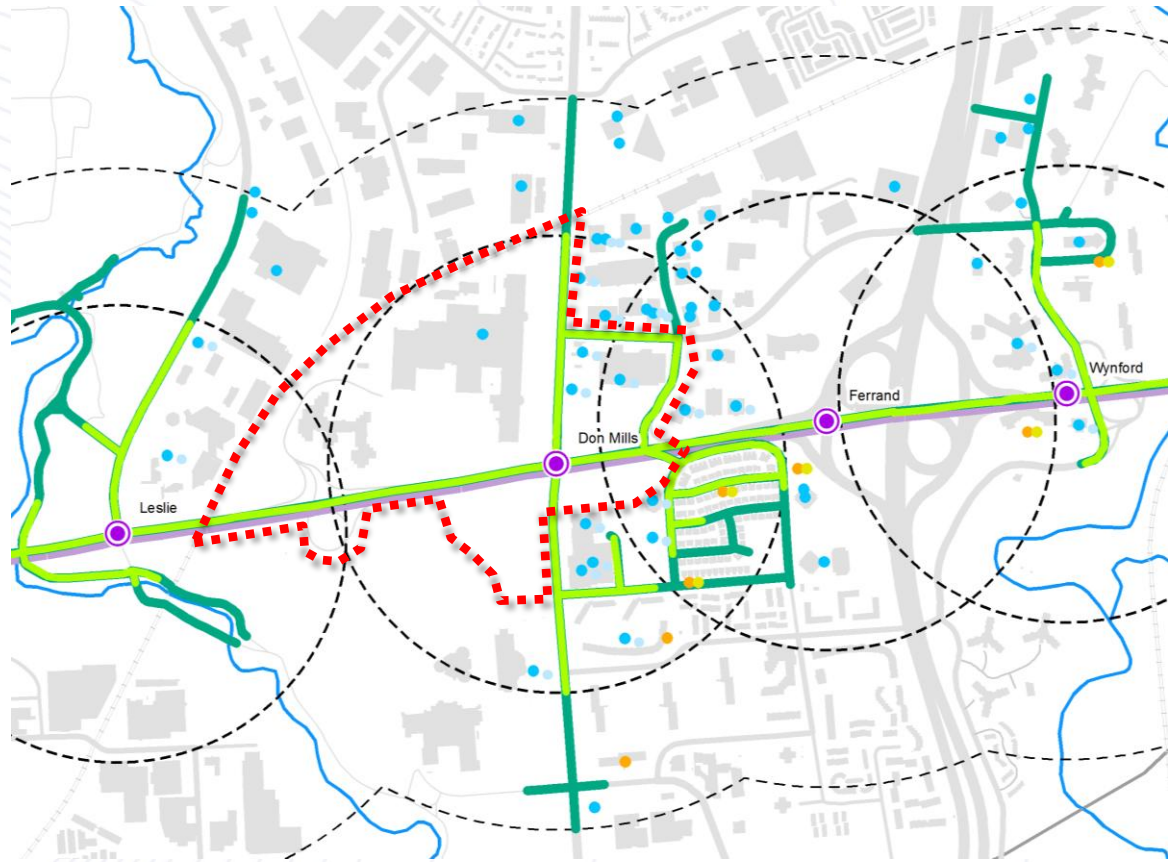
A urban fabric is largely lacking from the Core Study Area which needs to be connected to its surroundings.



MOVING THROUGH THE DISTRICT

People need to move through the existing and new neighbourhoods to transit stops along Eglinton.

In the Core Study Area there are limited paths or sidewalks for this to happen.



MAKING A PLACE AROUND TRANSIT

Don Mills and Eglinton has always been a place between places: people move through the area but rarely stay.

The construction of the Crosstown and open sites around the intersection represents an exciting city building opportunity.

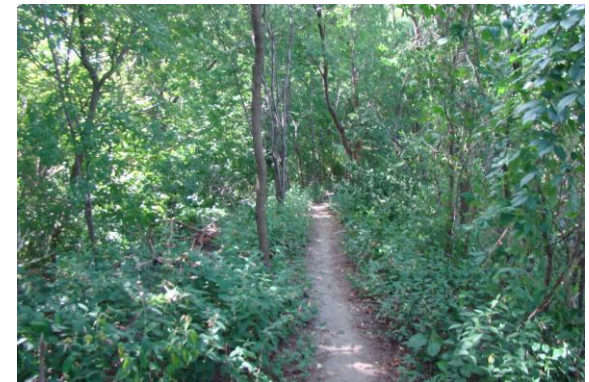


TONIGHT'S TASK

Circulate through the Open House and provide feedback on the study findings and next steps:

- Public Realm and Active Transportation
- Streets and Trails
- Parks and Facilities
- Land Use and Built Form

Tell us what you want to talk about at future public meetings.



WHAT'S NEXT?

Visit us at toronto.ca/donmillscrossing

Sign up for our email newsletter to stay in touch and to learn about upcoming public engagement events.



Toronto City of Toronto

Living In Toronto - Doing Business - Visiting Toronto - Accessing City Hall -

City of Toronto / ... / City Planning / Strategic Initiatives, Policy & Analysis / Don Mills Crossing

City Planning

- Developing Toronto
- Community Planning
- Strategic Initiatives, Policy & Analysis
 - Official Plan and Municipal Comprehensive Reviews
 - Growing Up: Planning for Children in New Vertical Communities
 - Keele Finch Plus
 - Don Mills Crossing**
 - Urban Design
 - Transportation
 - Environment
 - Growing Conversations
 - Feeling Congested
 - TOcore - Planning Toronto's Downtown
 - Official Plan
 - Zoning Bylaw
 - Yonge-Eglinton
 - Toronto Planning Review Panel

Don Mills Crossing

Home Background Information Studies and Reports Getting Involved

DON MILLS CROSSING
Community Building at Eglinton and Don Mills

THE STUDY

Don Mills Crossing is an initiative lead by the City of Toronto City Planning Division that will examine ways to focus and shape anticipated growth around the intersection of Don Mills Road and Eglinton Avenue East anchored by the transit infrastructure being constructed as part of the Crosstown LRT.

Building on the work of Eglinton Connects, Don Mills Crossing will look to improve connections to the surrounding areas, lay out a network of open space and identify community services necessary to support new growth. This a key city building moment for Don Mills & Eglinton.

Don Mills Crossing will result in a new planning framework, which will include implementation measures to support co-ordinated development of employment, residential and community uses.

We invite and encourage you to be involved. Public consultation will take place at each phase in the Study.

THE PROCESS

COUNCIL DIRECTION 2014

PHASE 1 Profile Summer 2014 - Early 2017

PHASE 2 Vision, Plan & Analyze 2017

PHASE 3 Implement 2018

What's New

You're Invited! Community Meeting and Open House

Join us on February 21st at the Japanese Canadian Cultural Centre (6 Garamond Court) between 5:00 pm - 9:00 pm for a presentation and open house on the Don Mills Crossing study and the Celestia development applications. Presentation at 5:00p.m. and repeated at 7:00p.m. Check out the [flyer](#) for full details!

Phase 1 Report & Profile Posted!

The Report and Profile identify key findings to inform future phases of Don Mills Crossing based on background reports, research and community engagement completed during Phase 1.

Five of our Phase 1 background reports are available under the [Studies and Reports](#) tab.

Subscribe to E-Updates

SUBSCRIBE TO E-UPDATES!

Type (do not copy and paste) your email into the box below