

# MUNICIPAL SERVICES

DID YOU  
KNOW



Most of the sewers and watermains in the Yonge-Eglinton area were built between 1910 and 1940

Drinking water in Midtown is supplied from both the High Level Pump Station (near Dupont St and Avenue Rd) and the Rosehill Pump Station (near Mt Pleasant Rd and St Clair Ave E)

Stormwater from Midtown primarily flows into either Yellow Creek or Mud Creek and continues to the Don River

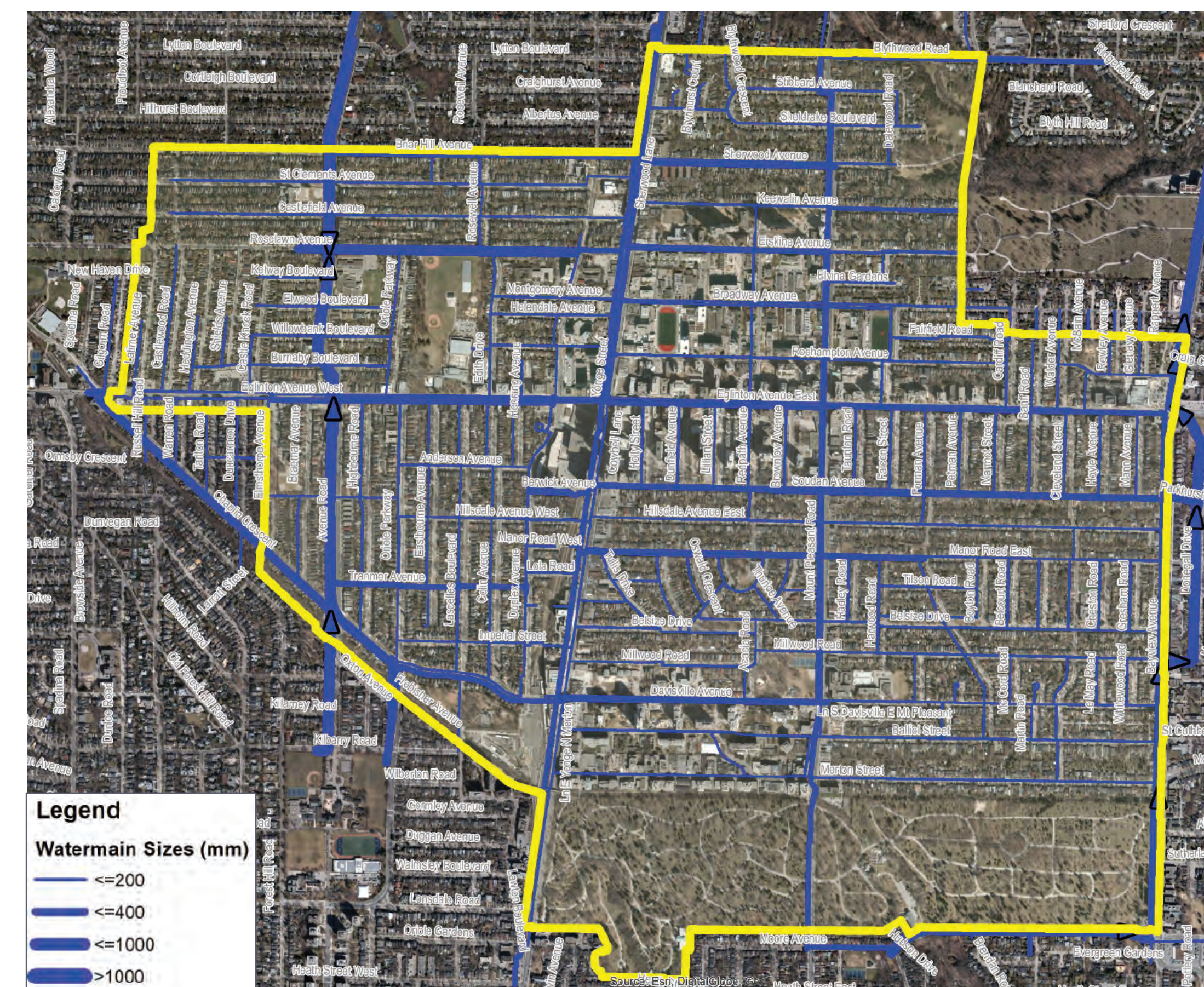
Sanitary sewage from the study area flows to the North Toronto Wastewater Treatment Plant in the Don Valley

## Municipal Servicing Assessment

The Midtown in Focus study includes an assessment of water infrastructure in the Yonge-Eglinton area, underway in 2017. The assessment focuses on the capacity, performance, and potential constraints of existing infrastructure including watermains, sanitary and storm sewers (both separated and combined).

The assessment will:

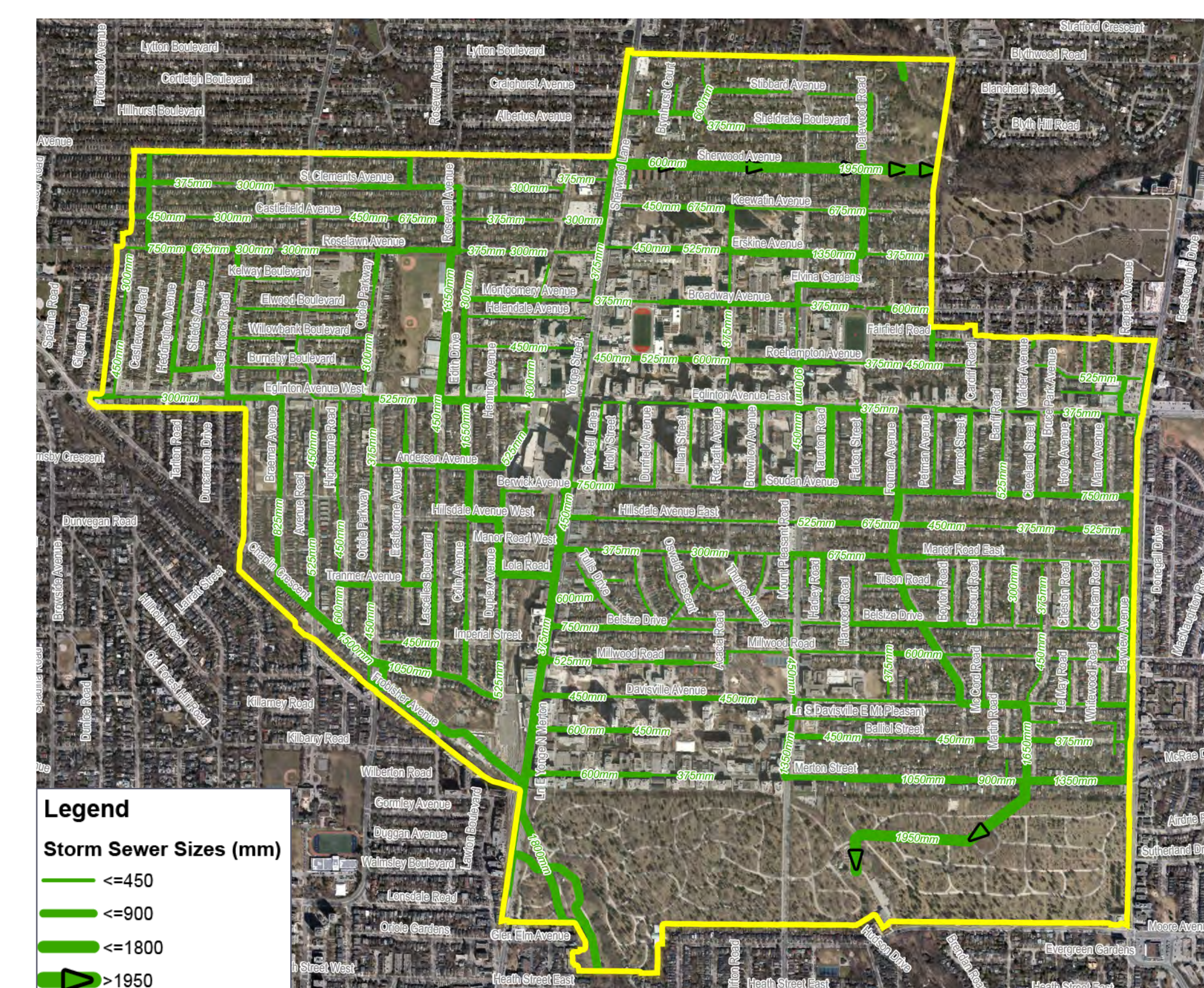
- Build up-to-date hydraulic models of both the drinking water and sewer systems;
- Assess the capacity of the existing system and the potential constraints;
- Assess the impact of future population growth on the current system; and,
- Provide recommendations for upgrades and improvements to support future growth.



Potable Water System



Sanitary Sewer System



Stormwater System