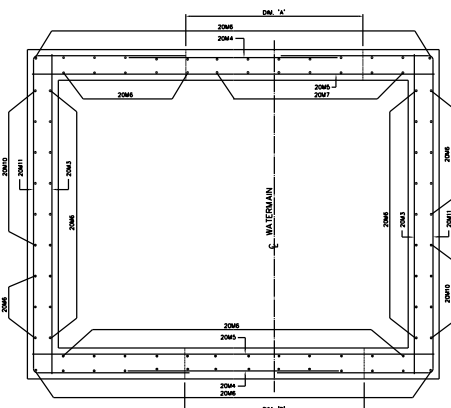
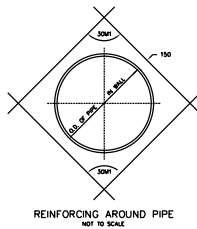
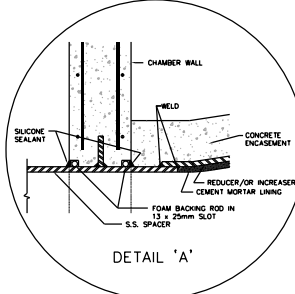


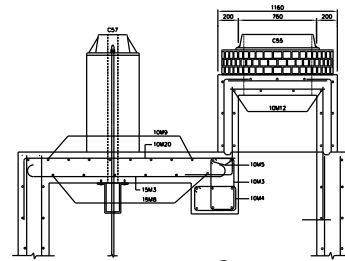
CHAMBER No.	DM 'A'	DM 'B'	DM 'C'	DM 'D'	DM 'E'



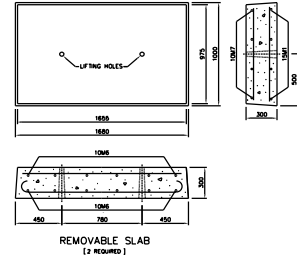
WALL SECTION



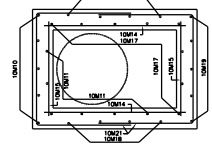
DETAIL 'A'



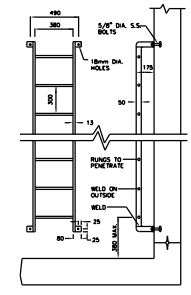
SECTION 'C'



REMOVABLE SLAB
(2 REBARS)



SECTION D-D




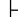
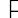
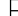
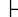
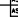

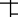
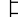
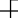
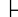
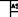
CHAMBERS

CHAMBER No.	CHAMBER	CHAMBER ELEV.	SURFACE ELEV.	DIFFERENCE IN ELEV.	COVER LOCATION	DRAIN TIME (OUTLET DIA.)	FOR LOCATION REFER TO PLAN No.	REMARKS

NOTES

- 25MPa CONCRETE TO BE USED EXCEPT AS NOTED.
- MAXIMUM SIZE OF CONCRETE AGGREGATE TO BE 20mm.
- COVER TO MAIN REINFORCING TO BE 50mm OR AS INDICATED.
- ALL BAR DIMENSIONS ARE OUT TO OUT.
- BARS TO BE BENT COLD, MINIMUM INSIDE RADIUS TO 4 DIAMETERS.
- ALL CROSSING BARS TO BE WELL WIRED.
- ALL REINFORCING STEEL TO BE DEFORMED BULLE-STEEL BARS GRADE 350, CONFORMING TO C.S.A. STANDARD C30.12M.
- ALL LAPS IN REINFORCING STEEL TO BE AT LEAST 30 DIAMETERS IN LENGTH OR AS SHOWN, AND TO BE STAGGERED.
- ALL BRICKWORK TO BE OF HIGH QUALITY HARD SEWER BRICK, LAID IN FULL MORTAR BED AND JOINTS, PARGED INSIDE AND OUTSIDE.
- WATERSTOP (P.V.C.) TO BE PROVIDED AT ALL CONSTRUCTION JOINTS.
- WHERE NECESSARY ADJUST REINFORCING STEEL TO SUIT WATERSTOPS AND OPENINGS.
- PROVIDE SUMP PIT WITH GRATING AND SLOPE FLOOR TO SUMP 10mm/METRE.
- DRAIN OUTLET TO BE LOCATED AT NEAREST POINT TO EXISTING SEWER.
- DRAIN CONNECTION TO SEWER TO BE MADE BY CONTRACTOR UNLESS OTHERWISE NOTED IN THE GENERAL SPECIFICATIONS.
- LADDERS, GRATINGS AND RAILINGS TO BE ALUMINUM AND OF REMOVABLE TYPE WITH STAINLESS STEEL BOLTS.
- TOP TWO STEPS AND ANY ADDITIONAL STEPS IN THE CHIMNEY TO BE OF THE REMOVABLE TYPE.
- CHAMBERS DEEPER THAN 1200mm FROM SURFACE ELEVATION TO TOP OF VALVE OPERATING SPINDLE SHALL HAVE EXTENSION SPINDLE AND GUIDE BRACKET.
- ALL ALUMINUM SURFACES CONTACTING CONCRETE TO RECEIVE ONE COAT OF BITUMINOUS PAINT.
- "X" DEPENDS ON HEIGHT OF CHIMNEY [DM 'H'] AND BARS SHALL BE COUNTED TO ENSURE THAT THE BOTTOM BAR IS LESS THAN 150mm ABOVE THE CHAMBER ROOF.

BENDING SCHEDULE

BAR No.	DIA.	TOTAL LENGTH	DIMENSIONS					SHAPE	O.C.	No. of BARS
			1	2	3	4	5			
10M1	10	800	220	220	220					7
10M2		710	120	230	120				150	8
10M3		640	520	230	120	230			200	20
10M4		1340	380	220	380				200	20
10M5		3900							AS SHOWN	5
10M6		900							300	24
10M7		580							300	8
10M8		2400							200	4
10M9		600							200	8
10M10		H=100						STRAIGHT	300	5
10M11		H=600							200	6
10M12		E14							300	4
10M13		1000							300	8
10M14		1000							300	"T"
10M15		1060							200	10
10M16		1850	1210	600					300	8
10M17		H=430	H=260	600					300	10
10M18		H=180	H=100	300					300	5
10M19		H=494	H=100	E14					300	5
10M20		2620							300	5
10M21		2830	900	1060	900				300	"T"
10M22		4260	600	3100	600				AS SHOWN	2
15		1340							AS SHOWN	8
15M1		1400							AS SHOWN	2
15M2		2400							300	6
15M3		2040							200	7
15M5		1630	1210						300	11
15M6		2200							300	14
15M7		2400						STRAIGHT	300	4
15M8		2400							300	7
20M1	20	3000							300	9
20M2		3100							300	12
20M3		3100							300	22
20M4		3000							300	24
20M5		3800							300	22
20M6		3100							300	71
20M7		2950							300	7
20M8		1310	1050	300					300	42
20M9		2060	1020	1050					300	48
20M10		1710	1170	600					300	60
20M11		6130	1560	3100	1550				300	24
25M1	25	4460	3600						AS SHOWN	3
30M1	30	O.D.=600						STRAIGHT	AS SHOWN	8