

# TORONTO TRANSIT COMMISSION

## Did you know?

A snapshot of services provided in 2017

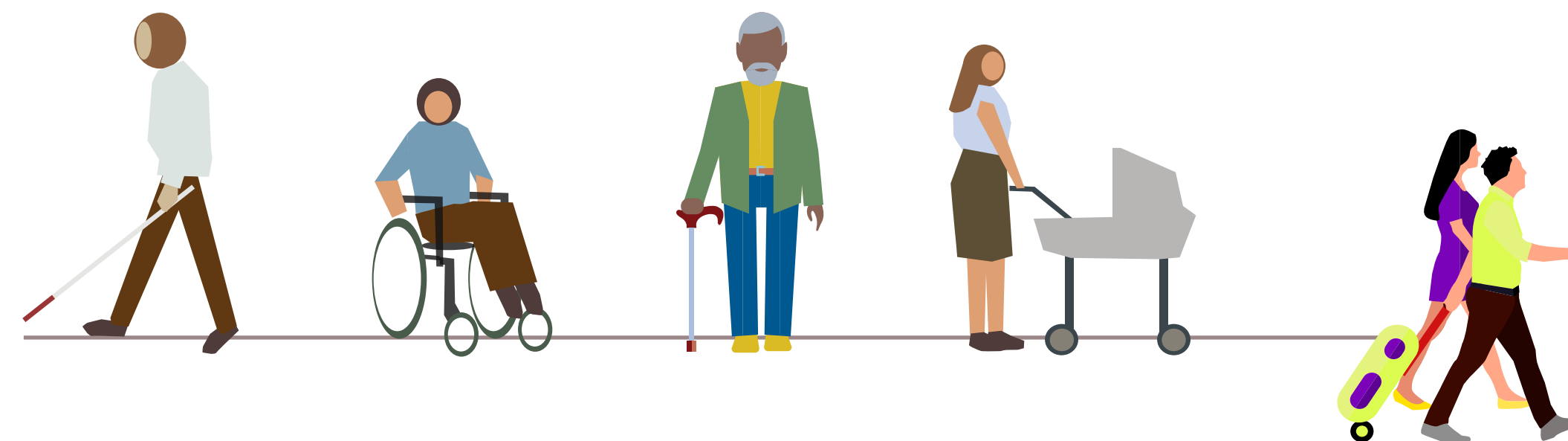
Added to the TTC's fleet this year, as of October 2017:



-  **200 NEW ACCESSIBLE BUSES**
-  **1 NEW WHEEL-TRANS VEHICLE**
-  **17 NEW LOW-FLOOR STREETCARS**



When fully deployed the **TTC WILL BE THE LARGEST TRANSIT SYSTEM** in Canada using PRESTO, with more than **10,000** devices in all subway stations and over **2,400** surface vehicles.



By the end of 2018,  
**45 OUT OF 75 SUBWAY STATIONS WILL BE FULLY ACCESSIBLE**  
with full system accessibility by 2025.

### TORONTO-YORK SPADINA SUBWAY EXTENSION



In 2017, the TTC will open the six-station, 8.6 km subway extension of Line 1. This is the **FIRST SUBWAY TO CROSS TORONTO'S BORDERS** into the 905 region.

The TTC's Wheel-Trans service operates 239 accessible buses and will transport **4.7 MILLION RIDERS IN 2017.**



The new Automatic Train Control signal system upgrades will continue in 2018 to provide for

**25% ADDITIONAL TRAIN CAPACITY**

on Line 1 Yonge-University when it is completed in 2019.