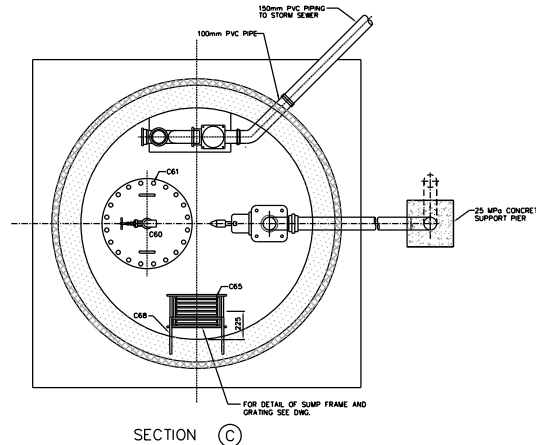
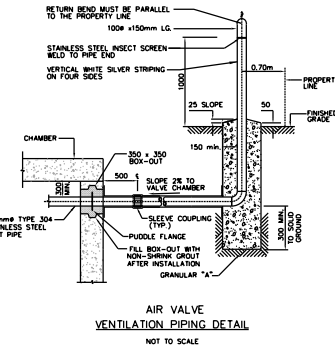


PLAN

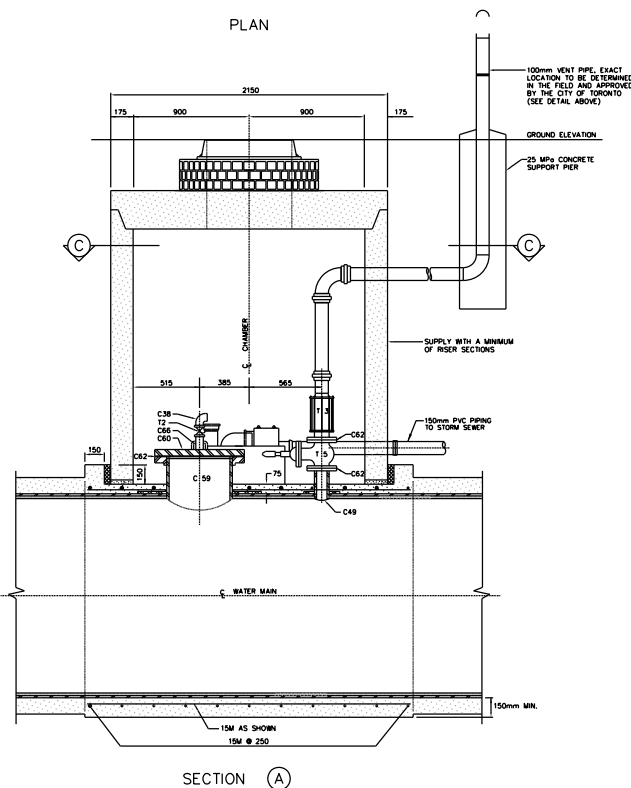


SECTION C

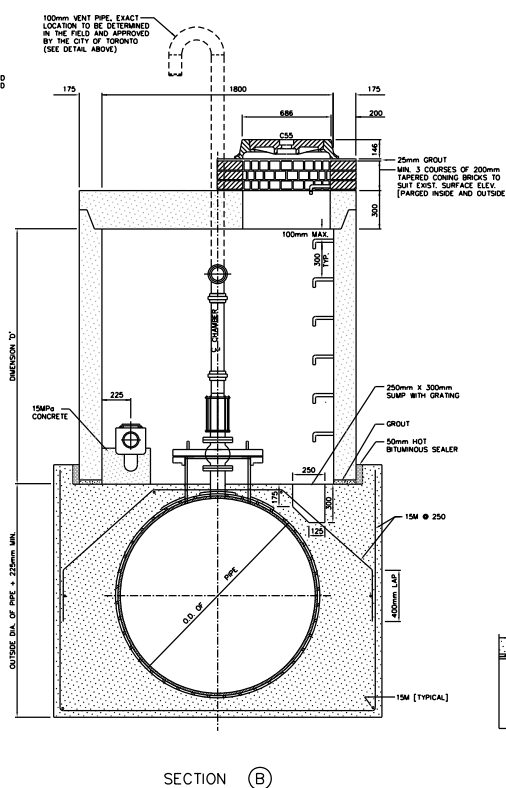


AIR VALVE VENTILATION PIPING DETAIL

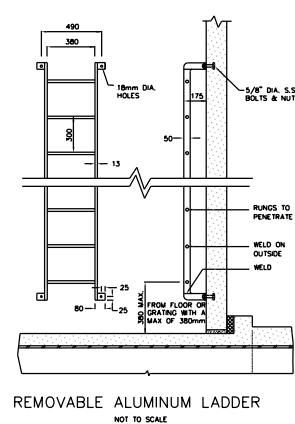
NOT TO SCALE



SECTION A

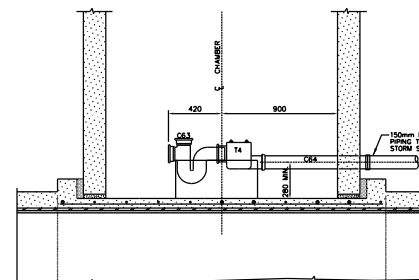


SECTION B

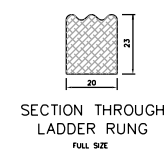


REMOVABLE ALUMINUM LADDER

NOT TO SCALE



SECTION SHOWING ELEVATED DRAIN



SECTION THROUGH LADDER RUNG

FULL SIZE

NOTES

- 1 PRECAST MAINTENANCE HOLE A.S.T.M. C-478-72 [REINFORCED] RUBBER GASKET JOINTS.
- 2 PROVIDE SUMP PIT WITH GRATING IN ALL CHAMBERS AND SLOPE CHAMBER FLOOR TO SUMP 10mm PER METRE.
- 3 DRAIN CONNECTION TO SEWERS TO BE MADE BY THE CONTRACTOR, UNLESS OTHERWISE STATED IN THE GENERAL SPECIFICATIONS.
- 4 FOR CHAMBERS UNDER 2 METRES IN DEPTH, STANDARD STEPS MAY REPLACE THE LADDER.
- 5 STANDARD STEPS IN THE CHIMNEY TO BE OF THE REMOVABLE TYPE, AND NOT TO PROJECT MORE THAN 125mm BEYOND WALL.
- 6 CHAMBERS DEEPER THAN 4 METRES FROM SURFACE TO FLOOR, ONE OR MORE SAFETY GRATINGS SHALL BE INSTALLED. FOR GRATING DETAILS SEE DWG.
- 7 ALL ALUMINUM SURFACES CONTACTING CONCRETE TO RECEIVE ONE COAT OF BITUMINOUS PAINT.
- 8 BACKFILLING TO BE BROUGHT UP EVENLY IN 300mm LAYERS AROUND CHAMBER.
- 9 SET BOTTOM SECTION OF CHAMBER ON 13mm STEEL SHIMS LEVEL AS REQUIRED AND COMPLETELY FILL VOID WITH APPROVED NON-SHRINK GROUT.
- 10 ALL JOINTS TO BE MORTARED ON OUTSIDE AND INSIDE.
- 11 PRIOR TO PLACING PRE-CAST ROOF SLAB ON CHAMBER THE FABRICATED MAINTENANCE HOLE COVER [C60] SHALL BE LOWERED INTO THE CHAMBER AND BE STORED AND PROTECTED UNTIL ITS INSTALLATION AFTER COMPLETION OF CEMENT MORTAR LINING.

MATERIAL LIST/PER CHAMBER

MARK NO.	SUPPLIED BY CITY OF TORONTO
T2	1-50mm BALL VALVE [SCREENED] (BRASS BODY/SS BALL & TEFLOON SEAT)
T3	1-100mm VENT-O-MAT SERIES RIB AIR RELEASE VALVE [FLANGED] OR EQUIVALENT
T4	1-100mm BACKWATER CHECK VALVE
T5	1-100mm GATE VALVE [FLANGED]

MARK NO.	SUPPLIED BY CONTRACTOR
C38	1-50mm BRASS STREET ELBOW
C49	1-FABRICATED S.S. 100mm NOZZLE
C59	1-FABRICATED S.S. MAINTENANCE HOLE FRAME
C60	1-FABRICATED S.S. MAINTENANCE HOLE COVER
C61	20-M30 x 125mm BOLTS & NUTS
C61	16-M16 x 75mm BOLTS & NUTS
C61	ONCH ANCHORS WITH M16 DIA. S.S. BOLT & NUT
C62	1-MAINTENANCE HOLE GASKET [FULL FACE, ONE PIECE]
C62	2-100mm GASKETS [FULL FACE, ONE PIECE]
C63	1-100mm TRAP WITH CLEANOUT & COVER
C64	1-100mm PVC PIPING AND 1-150mm TO 100mm REDUCER
C65	1-SUMP FRAME & GRATING [ALUMINUM]
C68	STANDARD ALUMINUM STEPS OR LADDERS
C39	1-13mm MALE INLET SINK FAUCET, ROUGH BRASS WITH HOSE END, ENCO #3710 OR EQUIVALENT
C66	1-50mm x 100mm L.G. HEAVY DUTY BRASS SUPPLY, WHEADED, TAPERED ENDS
C65	1-CAST IRON SQUARE FRAME WITH CIRCULAR COVER AND PLUG FOR VALVE CHAMBERS AS PER OFSD-462.010

• SUPPLY ONLY IF REQUIRED FOR DETAILS OF C49, C59 AND C60 SEE DWG.

CHAMBERS

CHAMBER No.	CHARGE	SURFACE ELEV.	WATERMAIN & ELEV. IN METRES	DIFFERENCE IN ELEV.	7" DIA. IN METRES	DRAIN TO BE INSTALLED	DIRECTION OF DRAIN OUTLET	COVER LOCATION	FOR LOCATION REFER TO PLAN No.

Toronto Water

Toronto Engineering & Construction Services

GENERAL MANAGER, TORONTO WATER

DIRECTOR, Design and Construction Linear Underground Infrastructure

EXECUTIVE DIRECTOR, Engineering & Construction Services

MANAGER, Design and Construction Linear Underground Infrastructure

PRECAST 100 mm AIR VALVE AND M.H. CHAMBER

DESIGN	Design	DRAWN	Drawn	CHECKED	Checked	CONTRACT No. X-X
SCALE	SCALE	DRAWING NUMBER	T-1110.07-5	SHEET X OF X		

No.	DATE	REVISIONS	INITIAL	SIGNED