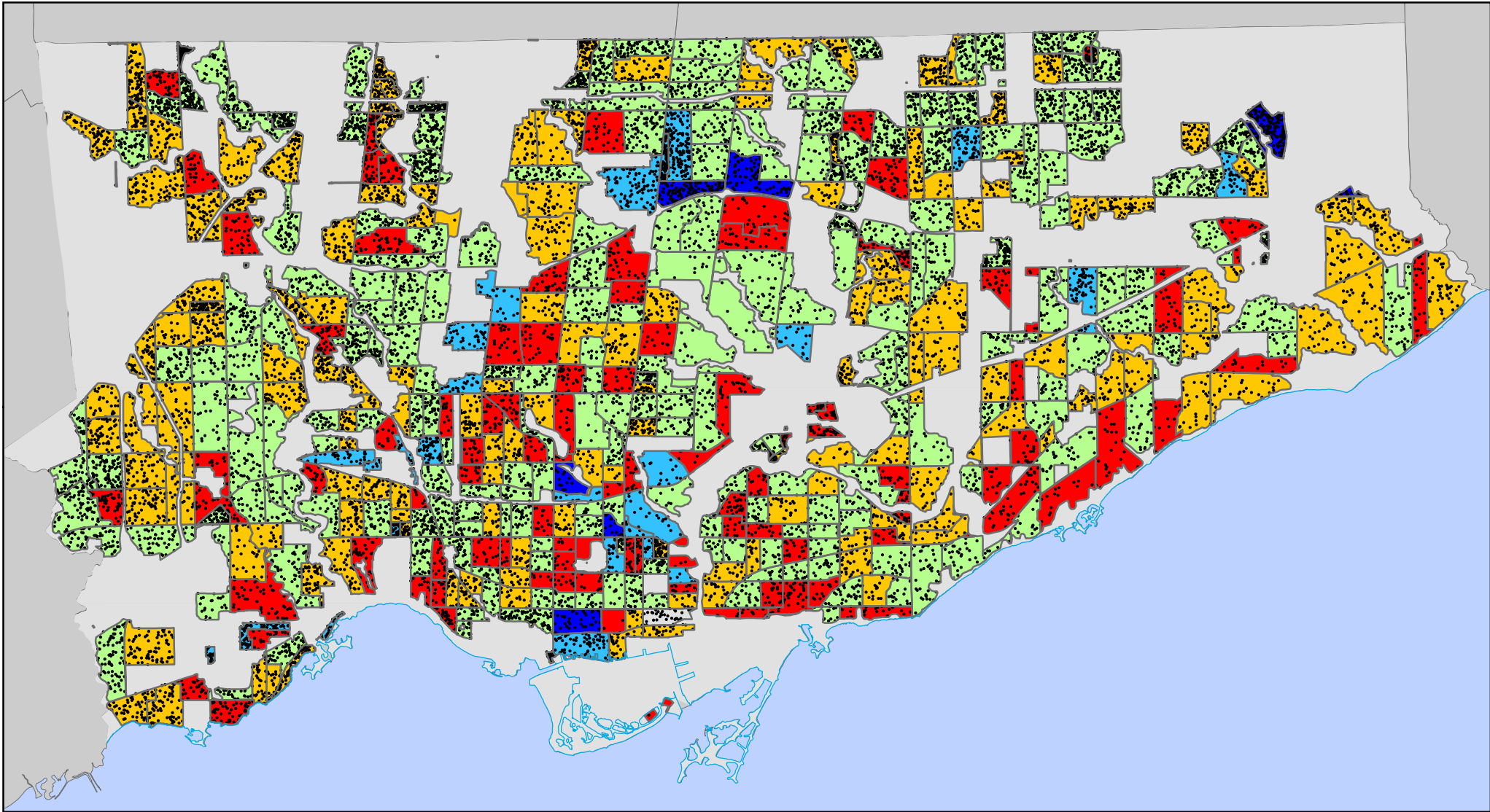



Persons Who Work in a Different CSD Than Where They Reside


By Census Tract





Legend


Change in Percentage 2001-2006

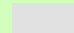
 -100% to -18.4%

 -18.3% to 0%

 +0.1% to +50%

 +50.1% to +115.9%

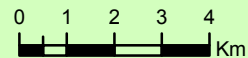
 +116% to +293%

 Primarily Non-residential Area

Dot Density of Commuters (2006)







Source: Statistics Canada, Census 2006; City of Toronto.

Copyright (c) 2008 City of Toronto. All Rights Reserved.

Published: March 2008

Prepared by: Social Policy Analysis & Research

Contact: spar@toronto.ca

Notes: Classification by modified natural breaks