

# SHELTER, SUPPORT & HOUSING ADMINISTRATION

## Did you know?

A snapshot of services provided in 2017

Helped to make housing  
**MORE AFFORDABLE FOR 96,000 HOUSEHOLDS**  
– more than the number of households in the City of Windsor.



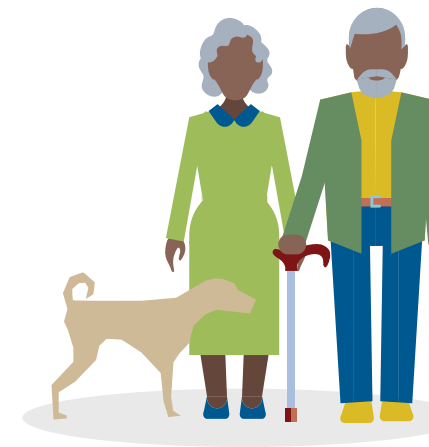
Introducing a new service model for shelters with a vision to creating **SERVICE HUBS** that better support clients while **BRINGING MORE VALUE** to local neighbourhoods.

Provided  
**24-HOUR WINTER RESPITE AND SERVICES** for more than **1,800 INDIVIDUALS** on the coldest days of the year – 80% of these individuals do not usually access the shelter system.

**INCREASING** the number of spaces and sites while extending the period of 24/7 availability of respite drop ins for winter 2017-18.



Assisted  
**4,500**  
households experiencing homelessness to find permanent homes.



Delivered nearly  
**1 MILLION DROP-IN SERVICES**  
– a meal, a shower, access to laundry and clothing.