

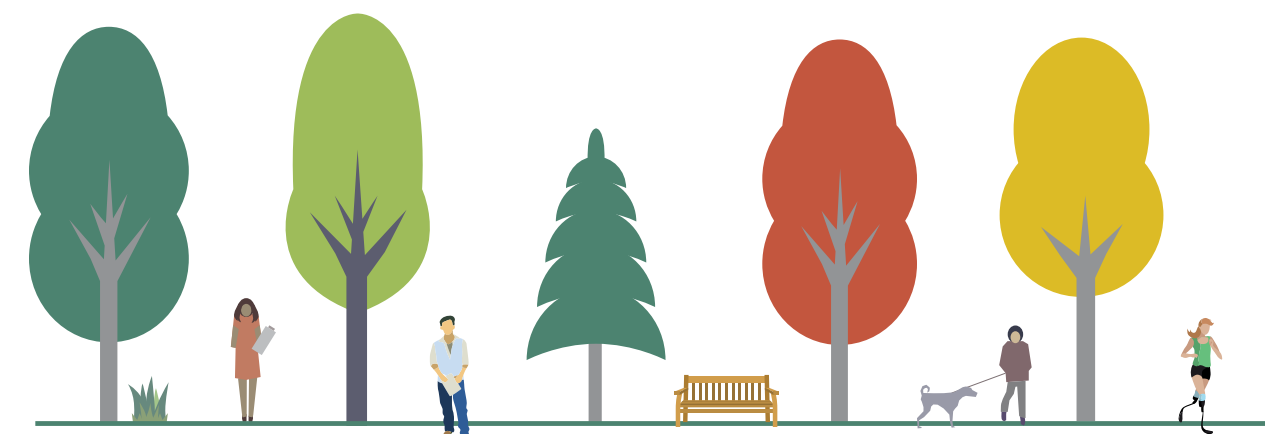
PARKS, FORESTRY AND RECREATION

Did you know?

A snapshot of services provided in 2016/17

160,000+

rounds of golf played on City-owned courses.



11,440 TREES TREATED

with Gypsy Moth aerial spray (2017).

4,119 ASH TREES TREATED to protect against the Emerald Ash Borer (2016).

130 INSECT TRAPS INSTALLED

and 200 elm trees treated to protect against Dutch elm disease (2016).

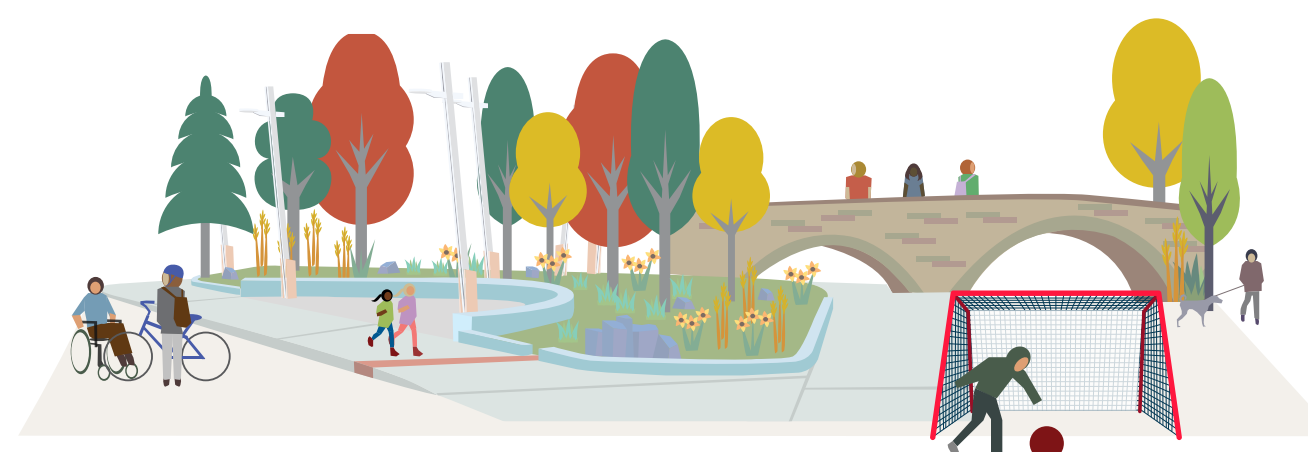
500,000+ URBAN FORESTRY WORK ORDERS COMPLETED including

inspections, storm clean-up, forest health care & tree pruning, removal & planting (2016).



MANAGED AND MAINTAINED:

- 123 community recreation centres
- 127 indoor and outdoor ice pads
- 118 indoor and outdoor pools
- 86 clubhouses • 23 fieldhouses



🏡 1,500+ parks

🏈 694 sport fields

🎾 602 tennis courts

🎡 858 playgrounds

🌊 101 wading pools

🏊 109 splash pads

🚶 300 km of multi-use trails

🌿 300+ km of natural environment trails

🏌️ 5 golf courses

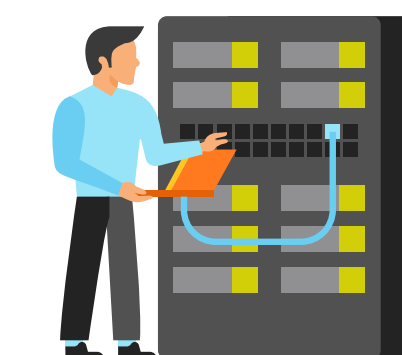
REGISTRATION SYSTEM IMPROVED!

600,000+ registrations processed & 500,000 permits for parks and facilities issued annually.

SERVER CAPACITY INCREASED BY 25% to improve access to the system.

20,000 online registrations in:

- 2009 took 3 hours
- 2016 took 15 minutes
- 2017 takes 10 minutes



Recreation Programs:

- **10.7 MILLION VISITS**
- **1.7 MILLION PROGRAM AND PERMIT HOURS**
- **\$38 MILLION IN REVENUE**



Four production greenhouses produce over **950,000 ANNUALS** for **6,100 HORTICULTURE BEDS** throughout **8,095 HECTARES OF PARKLAND.**