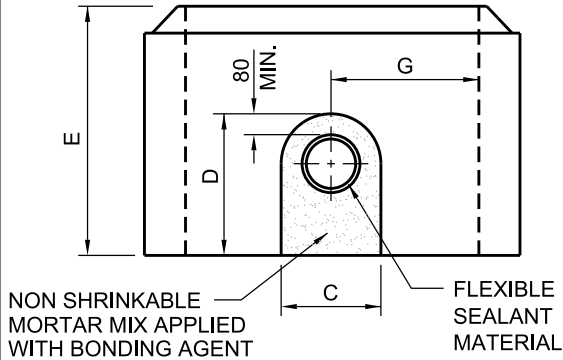
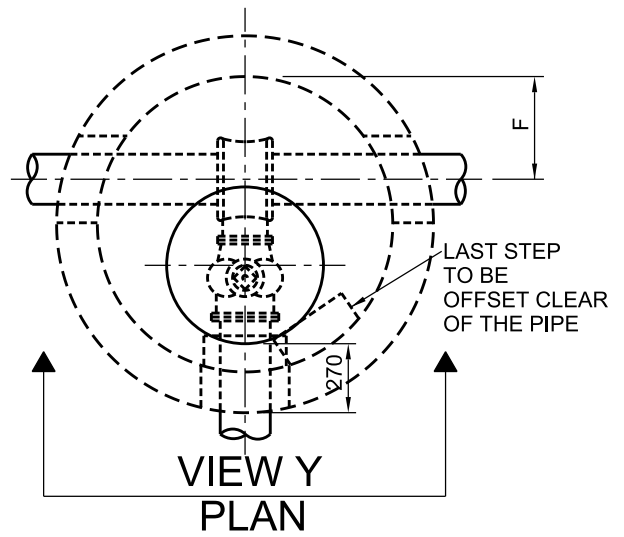
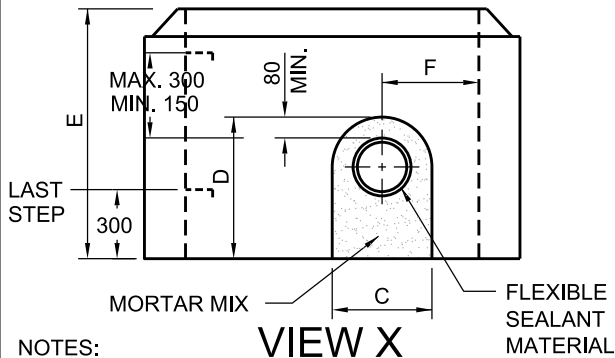


DIMENSION	100-250 mm WATER MAIN	300-400 mm WATER MAIN
A	1200	1500
B	127	150
C	400	550
D	600	750
E	900	1050
F	400	550
G	600	750
H	200	300



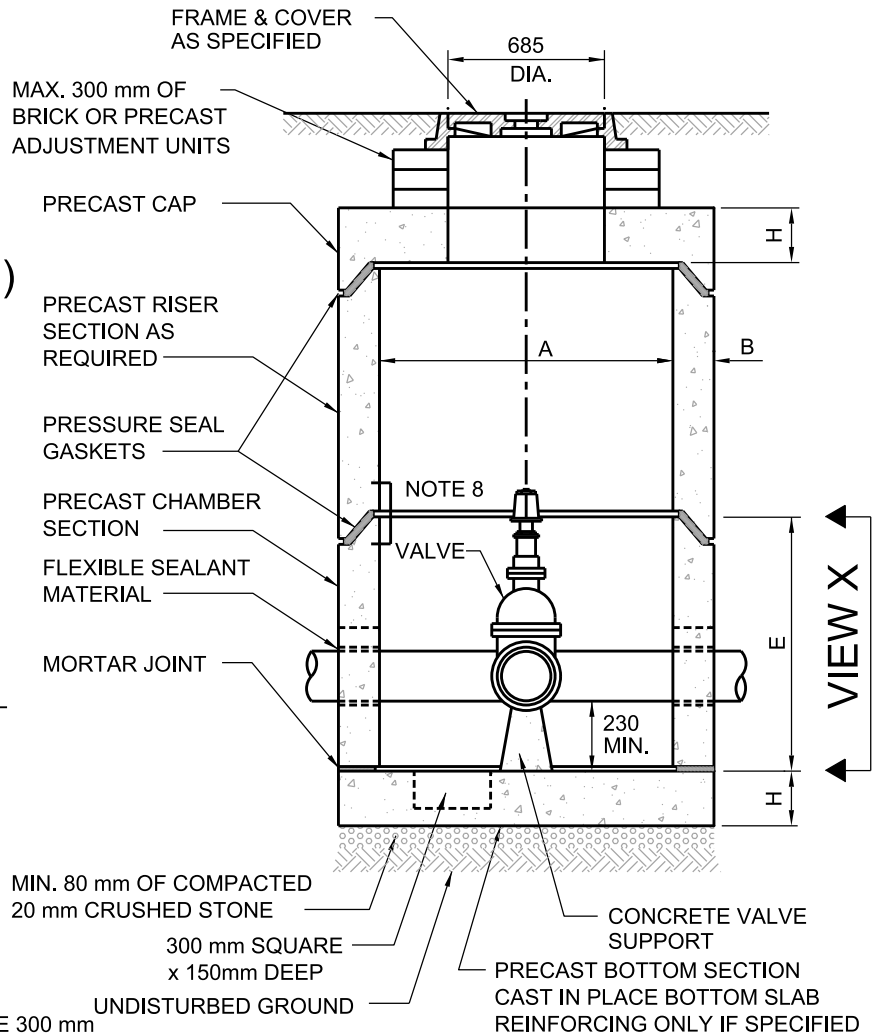
VIEW Y (BOTTOM SECTION)



NOTES:

1. PRECAST SECTIONS TO BE MANUFACTURED TO A.S.T.M. C-478 SPECIFICATIONS.
2. BASE AND VALVE SUPPORT CONCRETE STRENGTH - 32 MPa.
3. ALL MORTAR TO BE 1:3 MIX.
4. ALL JOINTS AND LIFT HOLES IN CHAMBER SECTIONS TO BE FILLED WITH MORTAR AND POINTED BEFORE BACKFILLING.
5. ALUMINUM STEPS AS PER OPSD 405.020 AT 300 mm C.C.
6. FIRST STEP 75 mm BELOW FRAME. LAST STEP TO BE 300 mm ABOVE BENCHING OR 600 mm ABOVE INVERT IF NO BENCHING.
7. POLYETHYLENE BOND BREAKER TO BE USED BETWEEN CONCRETE AND FITTINGS.
8. ALL BRICKWORK (EXTERIOR) TO BE PARGED - 15 mm MIN.
9. PROVIDE FROST LUGS IF JOINT IS LESS THAN 1200 mm BELOW GRADE.

All dimensions are in millimetres unless otherwise shown.



CROSS - SECTION



ENGINEERING AND CONSTRUCTION SERVICES STANDARD DRAWING

REV 1

APR 2013

TAPPING SLEEVE AND VALVE IN CHAMBER
400 mm DIA. WATER MAINS AND SMALLER

T-1101.030-2

NTS

SHEET 1