



SCARBOROUGH CENTRE TMP

SCARBOROUGH CENTRE

TRANSPORTATION MASTER PLAN (SCTMP)

November 29th 2016
Public Information Centre (PIC) # 1

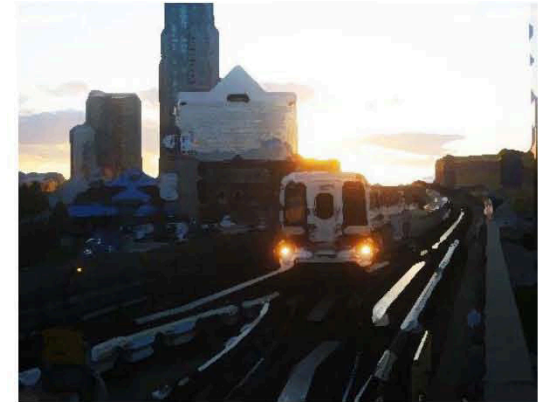
What is a Transportation Master Plan?

Why are we doing this study?

Scarborough Centre and study area

Study Approach & Schedule

Engagement



A Transportation Master Plan (TMP) sets the vision, strategy and action plan for the transportation system to meet the needs of a growing area.

TMP Process

Scarborough Centre

Present time

One of Toronto's four growth centres with an existing transportation network favoring movement of vehicles over people



Vision, Strategy & Plan

Reflective of the interests, priorities and values of residents and businesses in the area.

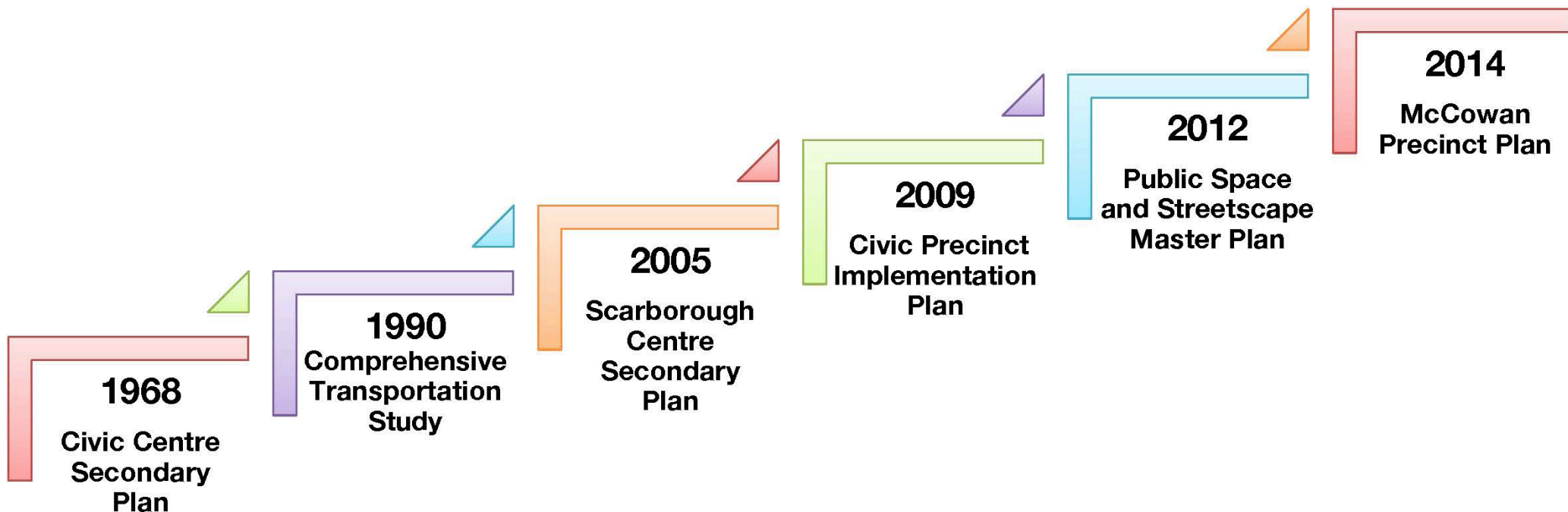


Scarborough Centre

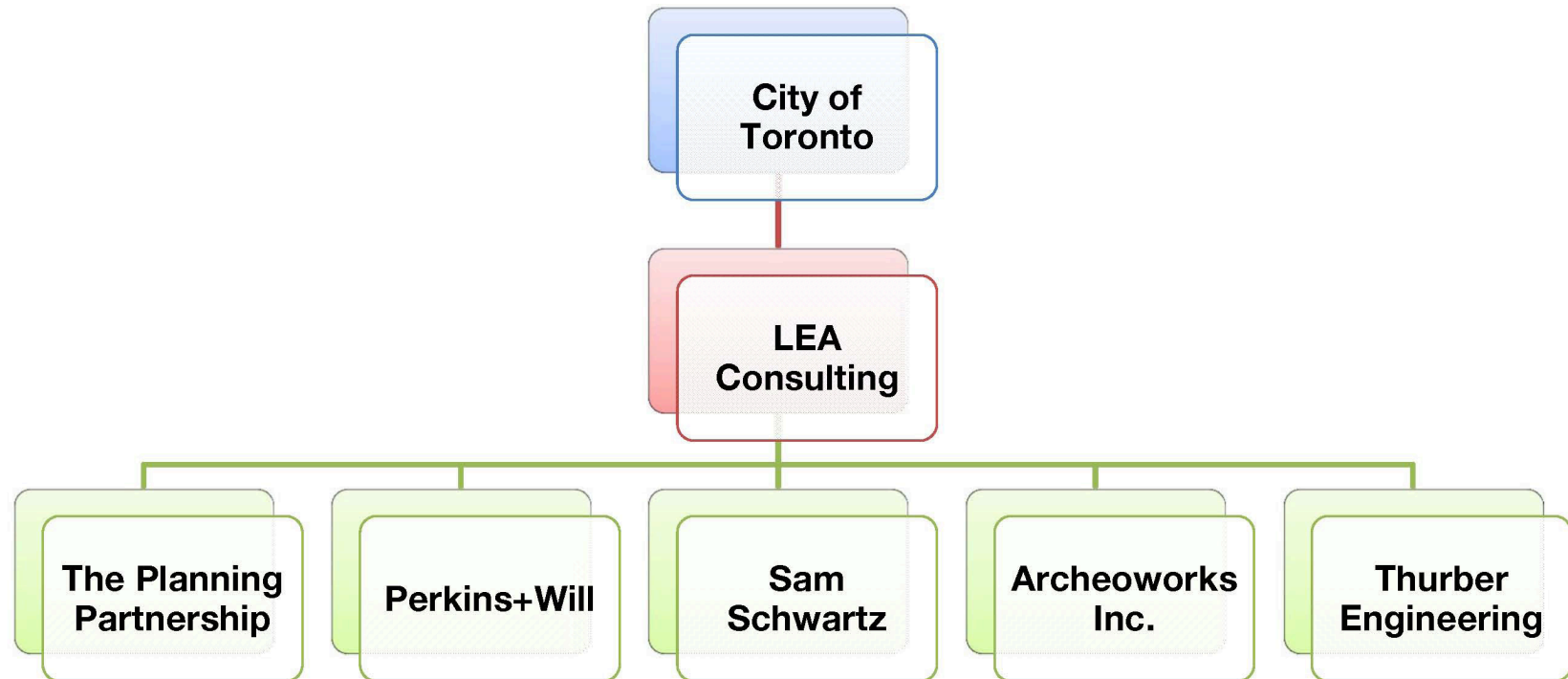
Future



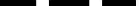
A sustainable and vibrant mixed-used urban centre with a transportation system for all users

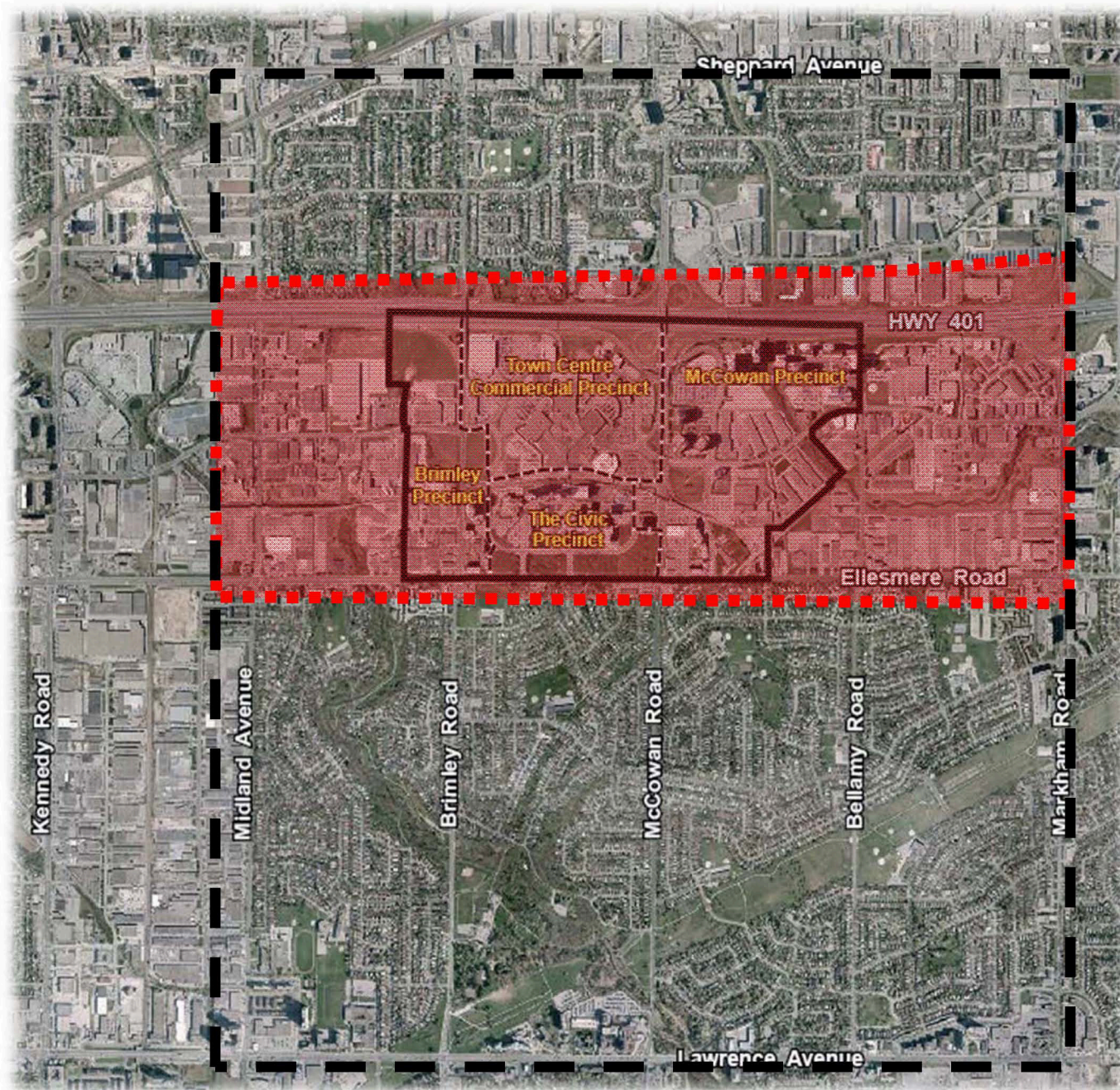
Previous Planning Work



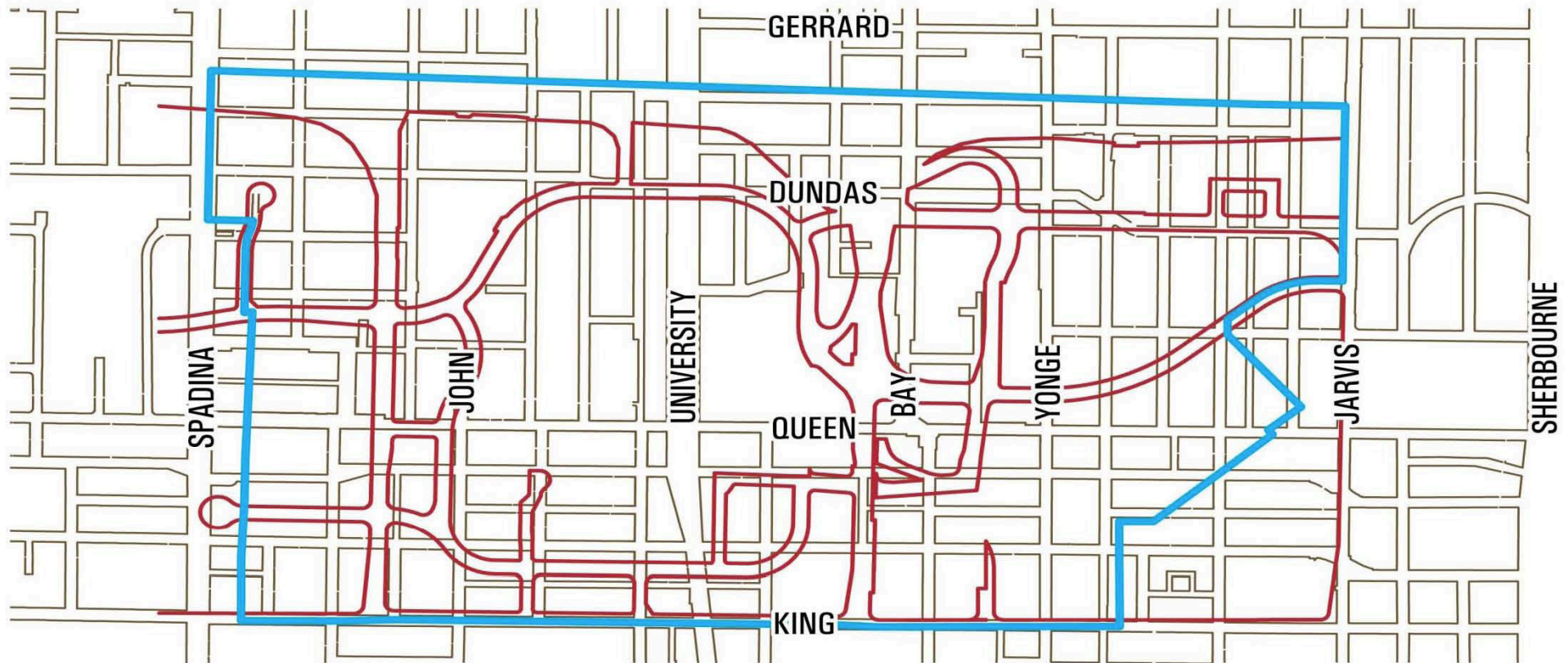
Opportune time for a comprehensive transportation review



-  Scarborough Centre Secondary Plan
-  SCTMP Core Study Area
-  SCTMP Preliminary Study Limits



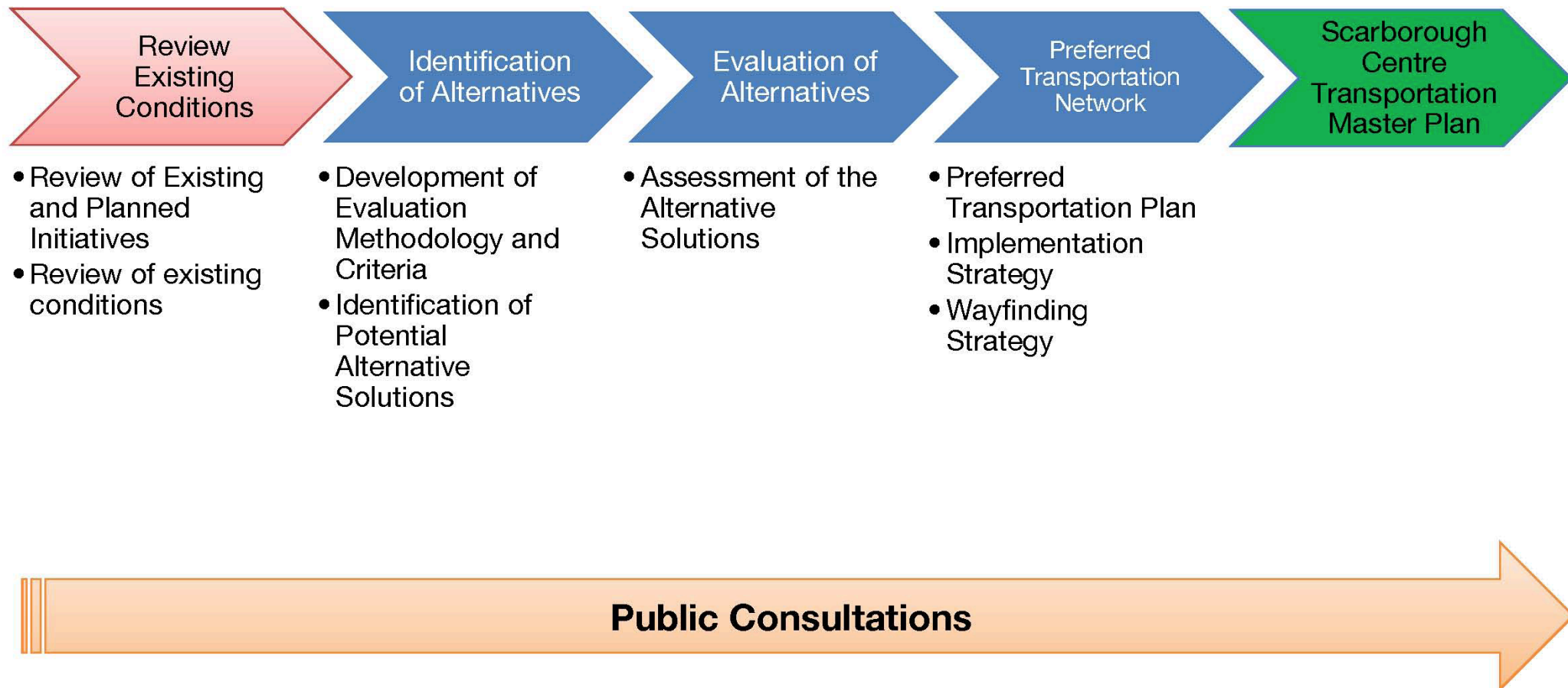
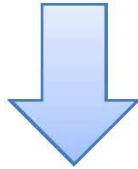
Scale of Scarborough Centre



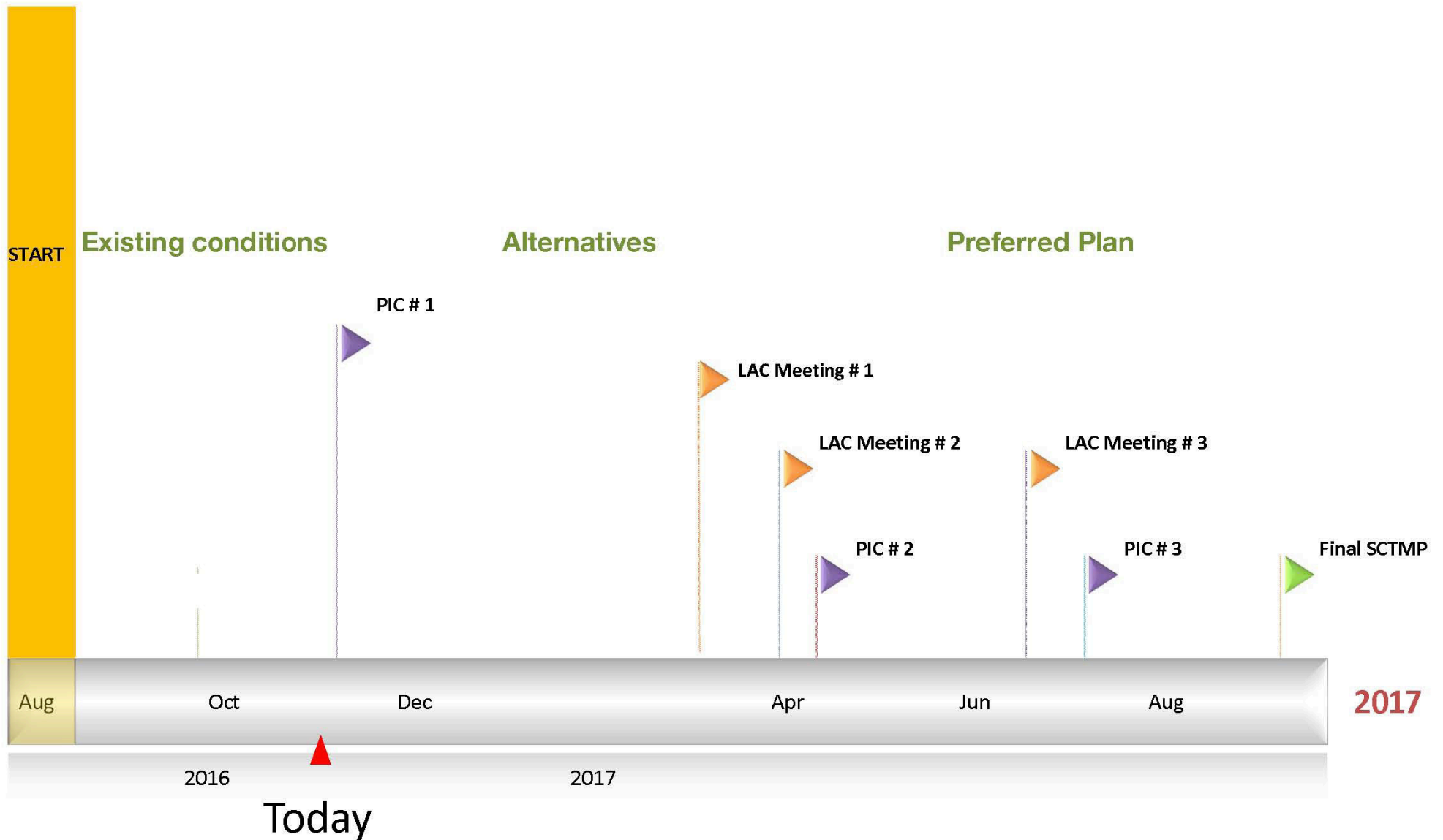
- Scarborough Centre Secondary Plan Boundary
- Scarborough Street Pattern

— Downtown Street Pattern

We are Here



Project Schedule



Scarborough Subway Extension

- Anticipated reporting milestones

- TTC Board January 18th 2017
- Executive Committee January 19th 2017
- City Council January 31st – Feb. 2nd 2017

- Report content

- Recommended alignment
- 3rd party review: cost estimates & risk assessment
- Analysis of project delivery models
- Governance structure

How to get involved?



Email your comments to
sconthemove@toronto.ca



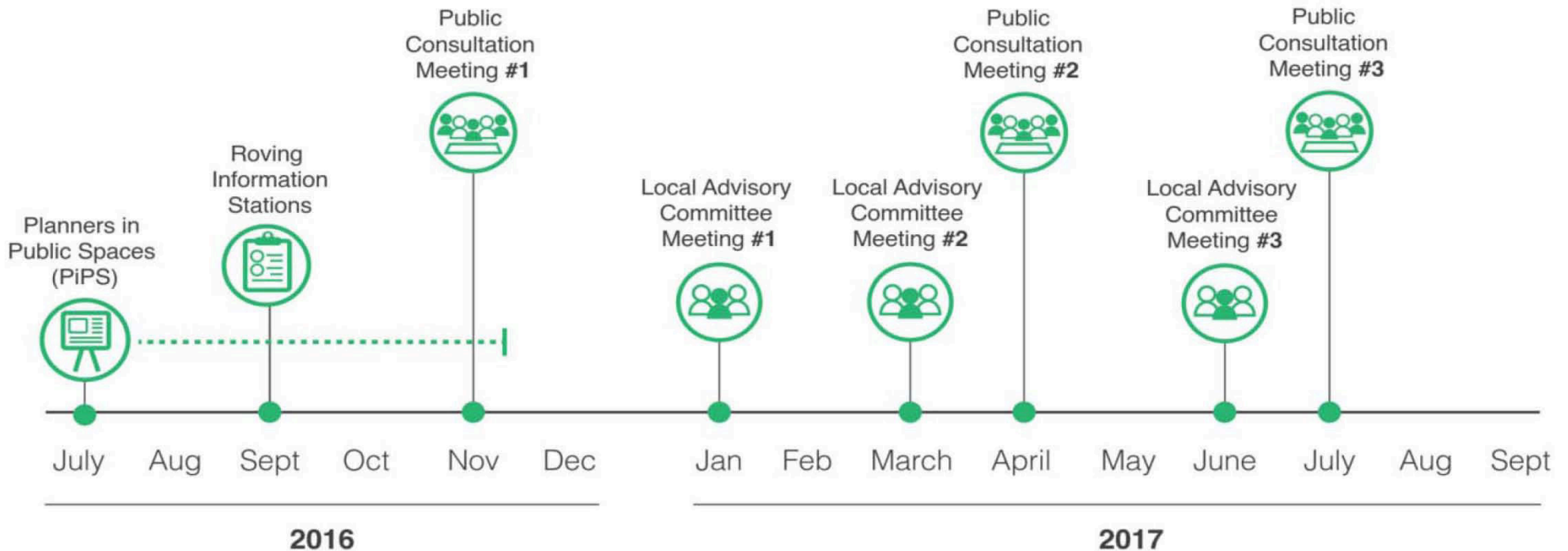
Check out our Facebook Page
facebook.com/sconthemove



Follow us on Twitter **@CityPlanTO** and
share your thoughts using **#sconthemove**



Keep up to date by checking the project's
website at **www.toronto.ca/sconthemove**



Local Advisory Committee (LAC)

- **Comprising of:**
 - Residents
 - Resident Association representatives
 - Businesses
 - Landowners
 - Interest groups
- **LAC size approx. 12 -15 people**
- **3 meetings anticipated, each approx. 3 hrs**
- **Intent of LAC**
 - Sounding board for ideas

Your input is extremely important

- **What is important to you?**
- **Have we captured adequately the following:**
 - **Vision statement**
 - **Problem & Opportunity Statement**
- **How can we make this area work well from a transportation perspective?**

You make a difference

- Share your thoughts at the boards
 - Will record your input
 - We will share all the input received
- Comment sheets
- Email
- Facebook
- Twitter
- **PLEASE SIGN-IN SO THAT WE CAN STAY INFORMED**