

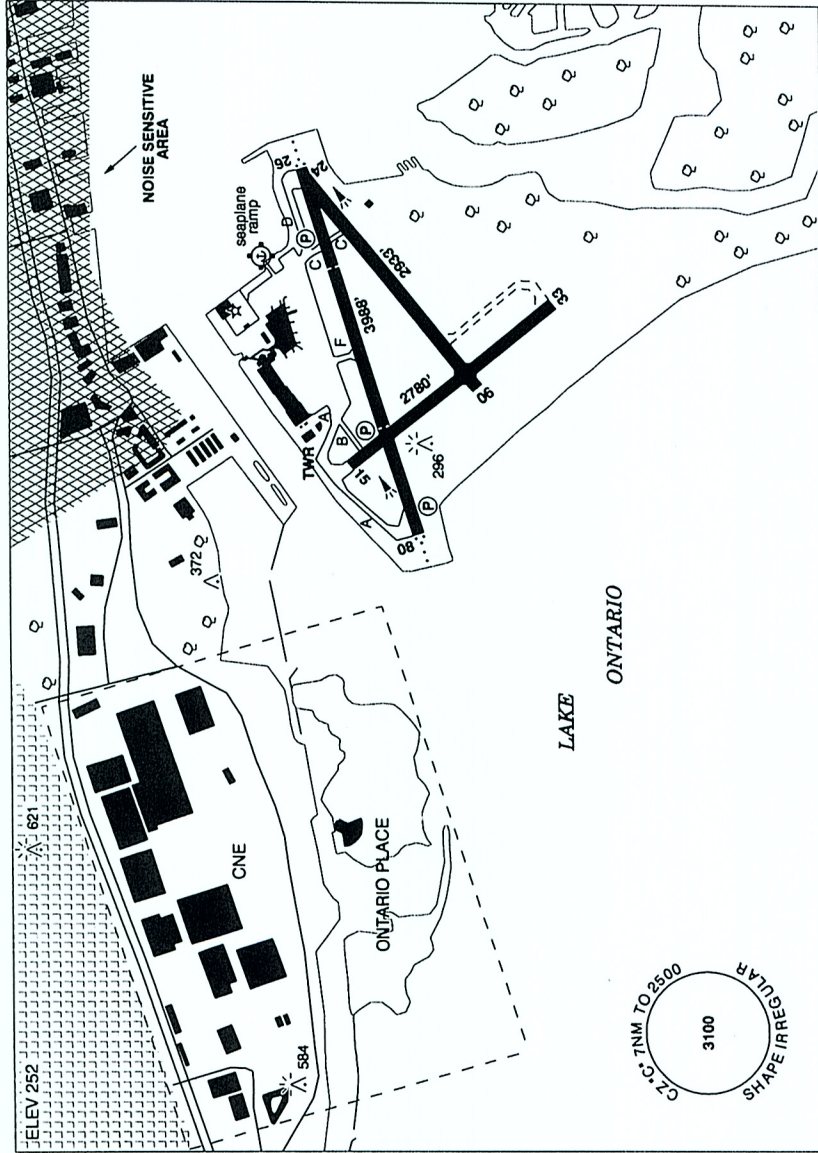
CANADA FLIGHT SUPPLEMENT / GPH 205

Effective 0901Z 07 March 2013 to 0901Z 02 May 2013

AERODROME/FACILITY DIRECTORY B1001

TORONTO / BILLY BISHOP TORONTO CITY AIRPORT ON

CYTZ



REF	N43 37 39 W79 23 46 Adj S 11°W UTC-5(4) Elev 252' VTA A5000 LO6 T2 CAP RCAP
OPR	Toronto Port Authority 416-203-6942 Cert Ldg fees
PF	A-1 B-2,3,6 C-4,5

CANADA FLIGHT SUPPLEMENT / GPH 205

Effective 0901Z 07 March 2013 to 0901Z 02 May 2013

B1002 AERODROME/FACILITY DIRECTORY

TORONTO / BILLY BISHOP TORONTO CITY AIRPORT ON (Cont'd)

CYTZ

CUST	AOE/90 888-226-7277 13-05Z†
FLT PLN	NOTAM FILE CYTZ Pilots to open/ close VFR flt plan with London rdo 123.15 or by phone.
FIC	London 866-WXBRIEF (Toll free within Canada) or 866-541-4104 (Toll free within Canada & USA)
ACC	Toronto 905-676-4590/4591/4592 or 888-217-1241
WX	METAR H24 AWOS (see COMM). WxCam
DUAT	TAF H24, issue times: 02, 08, 14, 20Z. Porter FBO
SERVICES	1145-0400Z† dly When ferry not running no access to aprt. Hrs of ferry operation are 1030-05Z†.
FUEL	100LL, JA-1
OIL	All
S	1,3
ARFF	6 1145-0400Z† O/T call out chg 2 hrs PN
PVT ADV	Esso Aviation 416-361-1100 123.2 12-23Z†; Porter FBO 416-203-2424 123.35 1130-0345Z†; Esso (Toronto City Aviation) 416-361-1100 12-23Z† Opr Seaplane dock/ramp
RWY DATA	Rwy 08(082°)/26(262°) 3988x150 asphalt Rwy 06(061°)/24(241°) 2933x150 asphalt Rwy 15(151°)/33(331°) 2780x150 asphalt
RWY CERT	Rwy 08 RVR 1200(1/4sm)/Rwy26 RVR 1200(1/4sm)
TWY	Twy B and Twy C - Discretionary oversteering required for acft with wingspan 90ft (27m) (DH8-300) or greater.
RCR	Opr 1145-0345Z† CRFI/RSC avbl ltd hrs. PLR/PCN
LIGHTING	08-AS(TE HI) P1 3.9°, 26-AZ(TE HI) AP 4.8° MEHT 63', 15-AP 5.5° See CAUTION PAPI P1 apch Rwy 08 and APAPI apch Rwy 26. Rwys 08 & 26 - three white inset pre-thld centerline lgts. Two pairs of inset white lgts 1099' upwind of each thld mark end of TDZ. Yellow rwy edge lgts for final 1362' Rwy 26 and final 1289' Rwy 08.
COMM	ATIS 133.6 1130-0400Z† dly GND 121.7 1130-0400Z† dly TWR City 118.2 119.2 (V) 1130-0400Z† dly (emerg only 416-973-9240) ATF lfc 118.2 0400-1130Z† dly within CZ 7NM SHAPE IRREGULAR 2500 ASL ARR Toronto 133.4 DEP Toronto 133.4 AWOS 133.6 0400-1130Z†
NAV	NDB GIBRALTAR POINT TZ 257 (L) N43 36 46 W79 23 08 DME TORONTO CITY ITZ 110.15 Ch 38(Y) N43 37 38 W79 23 58 (296') ITZ DME unmonitored when twr clsd. DME not usable within 1.0 DME. ILS ITZ 110.15 (Rwy 08) Ch 38(Y) RVR. ITZ ILS unmonitored when twr clsd. ICR 110.15 (Rwy 26) RVR. ICR ILS unmonitored when twr clsd. LOC reliable only within 10° either side of centerline.

CANADA FLIGHT SUPPLEMENT / GPH 205

Effective 0901Z 07 March 2013 to 0901Z 02 May 2013

AERODROME/FACILITY DIRECTORY B1003

TORONTO / BILLY BISHOP TORONTO CITY AIRPORT ON (Cont'd)

CY TZ

<p>PRO</p> <p>NOISE ABATEMENT</p>	<p>No arr/dep btwn 0400-1145Z† dly exc MEDEVAC &amp; emerg. Rgt hand circuits Rwy 06, 08 &amp; 15 (CAR 602.96). Rotary wing acft are to conform to established circuit pattern, unless auth by ATC. All pilots are rqr'd to check with the Aprt Duty Mgr (ADM) prior to conducting any engine maint run-ups. All pilots are encouraged to minimize the use of "reverse thrust" upon ldg, as long as flt safety is not jeopardised in any way. All jet acft (exc MEDEVAC flts) and certain types of propeller acft are proh fr utilizing the aprt. Pilots should check with aprt ops prior to arr. Pilots are requested to maintain 2000 ASL or above over Metropolitan Toronto Zoo (N43 49 05 W79 11 15). Avoid overflight of noise sensitive areas, see Toronto/Billy Bishop Toronto City Airport VTPC for east VFR routing.</p>
<p>CAUTION</p>	<p>All arr/dep acft to avoid flt over CNE/Ontario Place. For details see Toronto/Billy Bishop Toronto City Airport VTPC and Toronto/Billy Bishop Toronto City Airport sketch. Frequent banner towing activity over CNE in fixed pattern 1500 ASL and below. Vessels up to 120' (366 ASL) in vic of final apch to all rwys. PAPI P1 apch slope Rwy 08 will ensure clearance over tall vessels. DME/glidepath antenna 296 ASL (45 AGL) at A/D, see sketch. APAPI Rwy 15 apch slope 5.5°. APAPI Rwy 26 apch slope 4.8°. APAPI apch slope Rwy 26 will ensure clearance over vessels and chimney (N43 38 45 W79 19 59, 954 ASL (700 AGL) 2.6NM fr Thld 26. Secondary ERS subject to availability of ferry ops. Flagpole 372 ASL (121 AGL) located 0.3NM N of thld Rwy 15 &amp; adj W of extended rwy centreline. Wind turbine aprx 1NM W of aprt at CNE 584 ASL (323 AGL) N43 37 52 W79 25 29. Extv bird activity on A/D.</p>



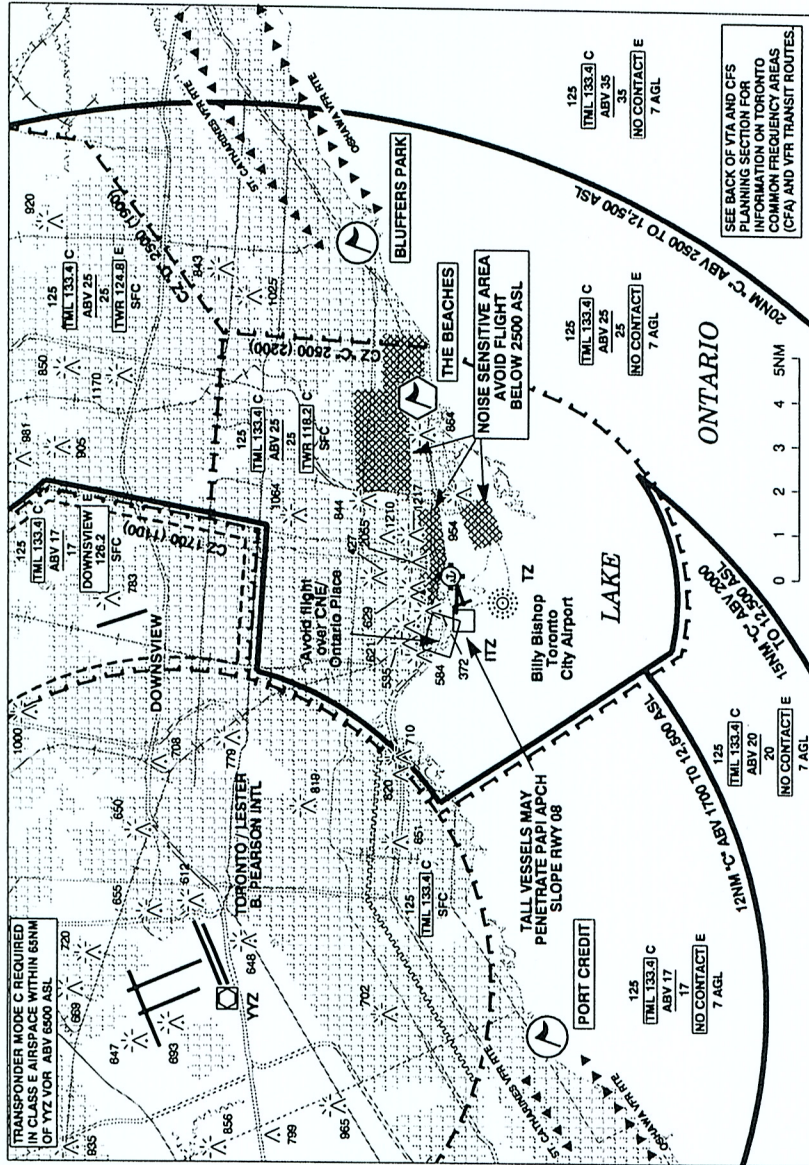


CANADA FLIGHT SUPPLEMENT / GPH 205

Effective 0901Z 07 March 2013 to 0901Z 02 May 2013

B1000 AERODROME/FACILITY DIRECTORY

TORONTO / BILLY BISHOP TORONTO CITY AIRPORT VFR TERMINAL PROCEDURES CHART



LOCATION	IDENT	LAT/LONG
BLUFFER'S PARK	VCBLF	N43° 42.50 W79° 14.00
PORT CREDIT	VCPCR	N43° 33.00 W79° 35.00
THE BEACHES	VCBCH	N43° 39.80 W79° 18.40