

Engineering Surveys V8i Graphic Configuration

Version 1.1

V8i Graphic Configuration Manual

Data Integration Services

December 2010

OVERVIEW	3
CONFIGURING THE GRAPHIC STANDARD	4
A Configuring The Graphic Standard From A Shared Network	4
B Setting up InRoads Project Defaults	5

OVERVIEW

The graphic specification is a set of files that define the appearance, layout and structure of survey files created by Engineering Surveys. The files that make up the specification can be found under the folder:

\\tornt412\S_M_info\Standards\Graphic Specs\Engineering Surveys\

Under this folder there are 6 subfolders:

DGNLIB: Contains two dgn libraries under the version folders.

EngSrv_V8_Cells_Vxxxxxx.dgnlib stores the graphics for all the survey cells.

EngSrv_V8_Levels_Vxxxxxx.dgnlib stores the level structure for survey files that Engineering Surveys creates.

InRoads_Files: Under the version folders there is an XIN folder which contains

EngSrv_v8i_Vxxxxxx.xin. This file specifies code properties, DTM's, geometry and other properties for survey points. The EngSrv_Elev_v8i_Vxxxxxx.xin file has the same codes as the EngSrv_v8i_Vxxxxxx.xin, only difference is there are custom operations to output elevation values for the specified point.

Seed_Files: Contains 3d and 2d Microstation seed files used to create the survey files.

Documentation: Descriptions for cells and survey specifications found under version folders.

-EngSrv_V8_Graphic_Specification_Vxxxxxx.pdf is the main graphic specification manual which contains graphic, cell and level names by feature class. Inroad custom operations Definitions, survey code specifications as well as cell definitions and descriptions.

-EngSrv_V8i_Configuration_Vxxxxxx.pdf is this document which outlines the resource files that make up the graphic specification, Microstation Workspace setup as well as Inroads project configuration setup.

Resources : This folder contains Microstation resource files such as user defined linestyles and font libraries as well as graphic configuration files (.ucf, .reg).

Version_Information: Contains Microstation project versioning documentation which describe differences between version updates.

CONTACTS

For questions or concerns in setting up this graphic specification please contact:

Jonathan Yeo
Graphic Data Integration
(416) 392-9094
jyeo@toronto.ca

Ahmed Abdulrahman
Graphic Data Integration
(416) 392-7816
aabdulr@toronto.ca

Ryk Karczuga
Supervisor, Graphic
Data Integration
(416) 392-9067
rkarczu@toronto.ca

CONFIGURING THE GRAPHIC STANDARD

The Engineering Graphic Standard must be accessed from the network server using Microstation Manager and selecting the current project version.

A Configuring The Graphic Standard From A Shared Network

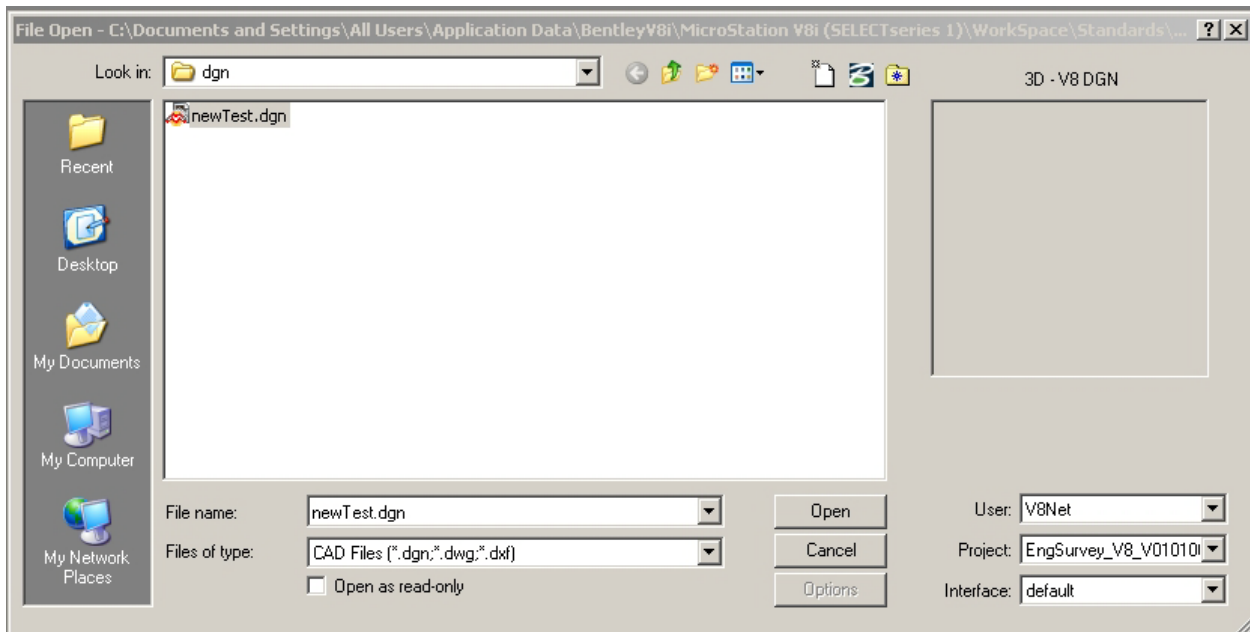
Presently, all the resources needed for the Engineering Surveys standard projects are found in \\tornt412\S_M_Info\Standards\V8Projects\EngSurvey\Vxxxxxx. To use a specific project version from this location, follow these steps:

1) **V8Net.ucf** is required to be imported to your local Workspace. Copy **V8Net.ucf** from \\tornt412\S_M_info\Standards\Graphic_Specs\Engineering_Surveys\Resources To

[C:\Documents and Settings\All Users\Application Data\Bentley\MicroStation V8i \(SELECTseries 1\)\Workspace\Users](C:\Documents and Settings\All Users\Application Data\Bentley\MicroStation V8i (SELECTseries 1)\Workspace\Users) (Click on above links to be directed to folders)

2) Open Microstation and select **V8Net** as the User.

3) From the project drop down box select the current version to use that as the project for that session. (Eg. Engsurvey_V8_V010100)



B Setting up InRoads Project Defaults.

- 1) Once InRoads has been loaded from the FILE menu bring up Project Defaults Dialog.
- 2) Select Import and browse to:
\\tornt412\S_M_info\Standards\Graphic_Specs\Engineering_Surveys\Resources
Open file **Inroads_Config_V8i.reg**.
- 3) Select the current Configuration Name based on Project version. (eg. V010100)
The Field **Preferences** should Automatically be filled in with the correct XIN file for that project. Select Apply and close dialog.

