

## **Appendix C**

### Map Comments



Cannon RD

Park Lawn RD

Stephen DR

Ringley AVE

The Queensway

Ontario Food Terminal Board

Humber Treatment Plant

Humber Loop

GO Transit Gardiner EXPY

Lakeshore BLVD W

Waterfront DR

Brookers Lane

Marine Parade DR

Park Lawn RD

Lakeshore BLVD W

Humber Bay Park East

CATFISH POND

ELLS AVE

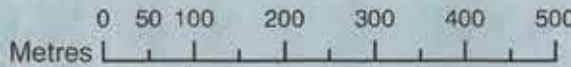
The Queensway

S Kingsway

Undermere AVE

HUMBER RIVER

LAKE ONTARIO



Data Sources: AECOM, \*MNR, City of Toronto  
\*Contains information licensed under the Open Government Licence Ontario.  
Source: Esri, DigitalGlobe, GeoEye, Earthstar Geographics, CNES/Airbus DS, USDA, USGS, AEX, Getmapping, Aerogrid, IGN, IGP, swisstopo, and the GIS User Community

better transit mode exchange

traffic congestion

access to lake (loop) via stairs

with traffic lights

with traffic lights

with traffic lights

with traffic lights

with traffic lights

with traffic lights

better bike lanes

with traffic lights

with traffic lights





Cannon RD

Park Lawn RD

Stephen DR

HUMBER RIVER

S Kingsway

Denmore AVE

POND

Ellis AVE

The Queensway

GO Transit  
Gardiner EXPY

Shoreshore BLVD W

Ringley AVE

The Queensway

Ontario Food  
Terminal Board

315 Metro Station

Palace Pier CRT

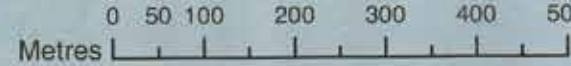
Gardiner EXPY

LAKE  
ONTARIO

GO Transit

Marine Parade Dr

Humber Bay  
Park East



Data Sources: AECOM, \*MNRF, City of Toronto  
 \*Contains Information licensed under the Open Government Licence Ontario  
 Source: Esri, DigitalGlobe, GeoEye, Earthstar Geographics, CNES/Airbus DS  
 USDA, USGS, AEX, Getmapping, Aerogrid, IGN, IGP, swisstopo, and the GI  
 User Community





Data Sources: AECOM, \*MNRF, City of Toronto  
 \*Contains Information licensed under the Open Government Licence Ontario  
 Source: Esri, DigitalGlobe, GeoEye, Earthstar Geographics, CNES/Airbus DS  
 USDA, USGS, AEX, Getmapping, Aerogrid, IGN, IGP, swisstopo, and the GIS  
 User Community





Planning for Greenway

Best location for GO station and transit hub

Expansion to loop railhead

New York River

Data Sources: AECOM, \*MNR, City of Toronto  
 \*Contains Information licensed under the Open Government Licence Ontario.  
 Source: Esri, DigitalGlobe, GeoEye, Earthstar Geographics, CNES/Airbus DS, USDA, USGS, AEX, Getmapping, Aerogrid, IGN, IGP, swisstopo, and the GIS User Community





Cannon RD

Park Lawn RD

Stephen DR

Ringley AVE

The Queensway

Ontario Food Terminal Board

Humber Treatment Plant

Humber Loop

Police Pkg CRT

Waterfront DR

Marine Parade DR

Park Lawn RD

Lakeshore Blvd W

Humber Bay Park East

HUMBER RIVER

S Kingsway

Undermere AVE

Elis AVE

The Queensway

GO Transit Gardiner EXPY

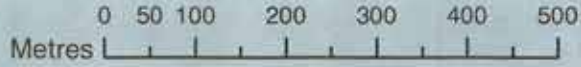
Lakeshore Blvd W

CATFISH POND

LAKE ONTARIO

What are the plans? EGO Strategic Council, 2011

Partnership Agreement



Data Sources: AECOM, \*MNRF, City of Toronto  
\*Contains information licensed under the Open Government Licence Ontario.  
Source: Esri, DigitalGlobe, GeoEye, Earthstar Geographics, CNES/Airbus DS, USDA, USGS, AEX, Getmapping, Aerogrid, IGN, IGP, swisstopo, and the GIS User Community





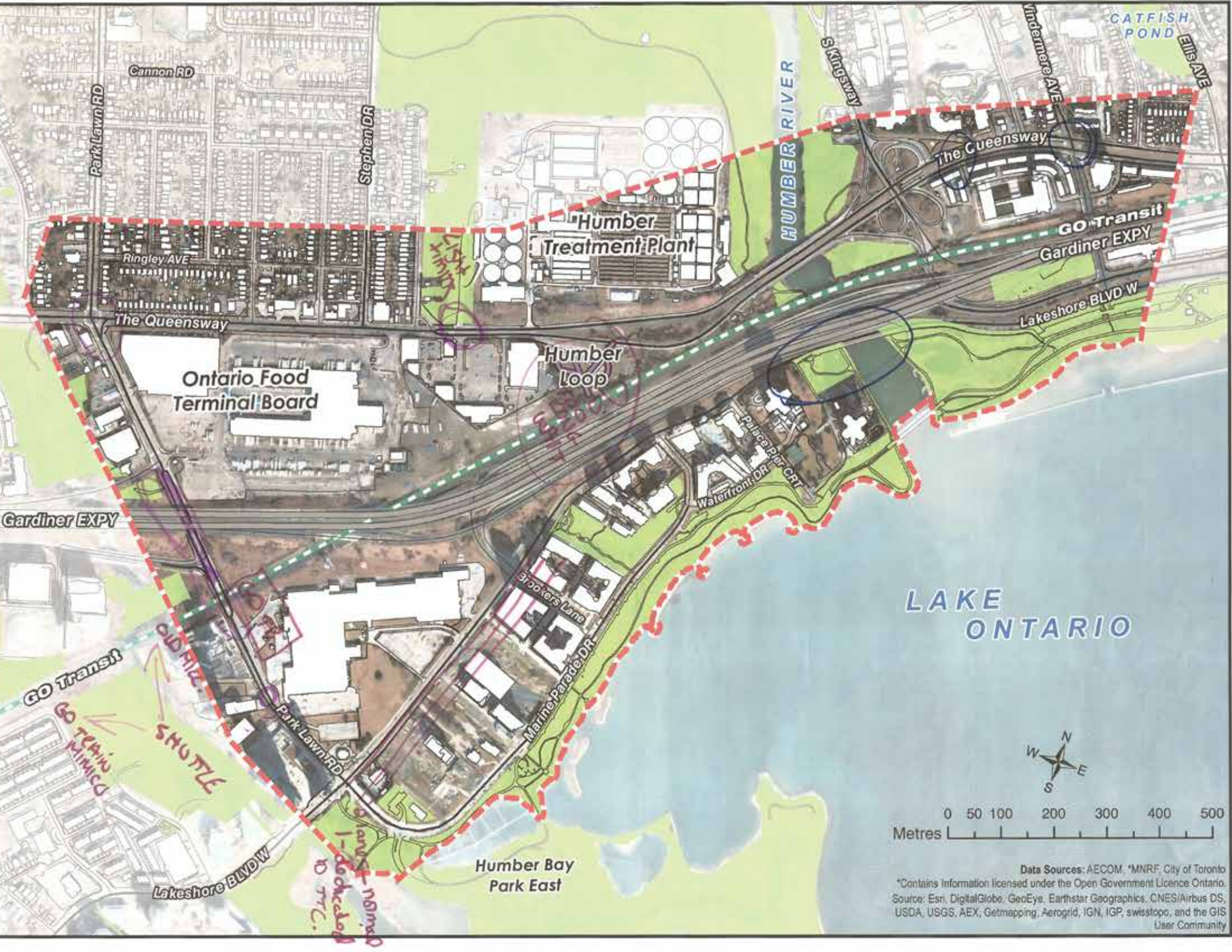
Cannon RD  
 Park Lawn RD  
 Stephen DR  
 Ringley AVE  
 The Queensway  
 Ontario Food Terminal Board  
 Humber Treatment Plant  
 Humber Loop  
 Palace Pier CRT  
 Waterfront DR  
 Park Lawn RD  
 Parkers Lane  
 Marine Parade DR  
 Humber Bay Park East  
 Humber River  
 Skinsway  
 The Queensway  
 GO Transit Gardiner EXPY  
 Lakeshore BLVD W  
 Lakeshore BLVD W  
 GO Transit  
 Gardiner EXPY  
 Catfish Pond  
 Eglis Ave  
 Undermire AVE

LAKE ONTARIO



Data Sources: AECOM, \*MNRF, City of Toronto  
 \*Contains Information licensed under the Open Government Licence Ontario  
 Source: Esri, DigitalGlobe, GeoEye, Earthstar Geographics, CNES/Airbus DS, USDA, USGS, AEX, Getmapping, Aerogrid, IGN, IGP, swisstopo, and the G...  
 User Communi...





Cannon RD

Park Lawn RD

Stephen DR

HUMBER RIVER

S Kingsway

The Queensway

GO Transit  
Gardiner EXPY

Lakeshore BLVD W

Humber  
Treatment Plant

Ontario Food  
Terminal Board

Humber  
Loop

Palace Pier CRT  
Waterfront DR

Gardiner EXPY

LAKE  
ONTARIO

GO Transit

OLD HIGH

SHUTTLE

GO TRANSIT  
PLIMCO

Park Lawn RD

Brookers Lane

Marine Parade DR

Lakeshore BLVD W

Humber Bay  
Park East

S. 1000  
S. 1000  
S. 1000



Data Sources: AECOM, \*MNRF, City of Toronto  
\*Contains Information licensed under the Open Government Licence Ontario.  
Source: Esri, DigitalGlobe, GeoEye, Earthstar Geographics, CNES/Airbus DS,  
USDA, USGS, AEX, Getmapping, Aerogrid, IGN, IGP, swisstopo, and the GIS  
User Community





Cannon RD

Park Lawn RD

Stephen DR

Humber Treatment Plant

HUMBER RIVER

SKingsway

Undermere AVE

CATFISH POND  
ELIAS AVE

The Queensway

GO Transit  
Gardiner EXPY

Ringley AVE

The Queensway

Ontario Food Terminal Board

Humber Loop

Lakeshore BLVD W

Palica Pier CRT  
Waterfront DR

Gardiner EXPY

LAKE ONTARIO

GO Transit

GO LOOK LIGHTS

Brookers Lane

Marine Parade DR

Park Lawn RD

SEAP EXPANSION ON LEGON RD

Lakeshore BLVD W

Humber Bay Park East



Data Sources: AECOM, \*MNRF, City of Toronto  
\*Contains Information licensed under the Open Government Licence Ontario.  
Source: Esri, DigitalGlobe, GeoEye, Earthstar Geographics, CNES/Airbus DS, USDA, USGS, AEX, Getmapping, Aerogrid, IGN, IGP, swisstopo, and the GIS User Community





Cannon RD

Park Lawn RD

Stephen DR

HUMBER RIVER

S Kingsway

Undermere AVE  
CATFISH POND  
Elli's AVE

The Queensway

GO Transit  
Gardiner EXPY

Lakeshore BLVD W

Handwritten note: "LANES (see map) CONCK"

Handwritten note: "Improve Humber Loop + car access"

Handwritten note: "Add Traffic signs"

Ontario Food Terminal Board

Humber Loop

Handwritten note: "Improve Sidewalk under Terminal 'the loop'"

Handwritten note: "Add a Lane over Bridge Expand Bridge"

Waterfront DR  
Palace Pier CRT

Gardiner EXPY

Handwritten note: "D AVE OVER ROAD LINE WITH 50M+ SS"

LAKE ONTARIO

GO Transit

Handwritten note: "PAVE HUMAN BRIDGE UNDERPASS WITH LIGHT PROTECTIVE FENCE WITH BARRIERS FROM TRAFFIC BARRIERS 200M"

Handwritten note: "Add Traffic Info sign"

Handwritten note: "Take 'Circumfer' or 'Resident' sign"

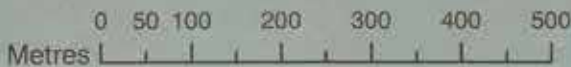
Handwritten note: "Traffic signs 'the loop'?"

Park Lawn RD

Brookers Lane

Humber Bay Park East

Lakeshore BLVD W



Data Sources: AECOM, \*MNR, City of Toronto  
 \*Contains Information licensed under the Open Government Licence Ontario.  
 Source: Esri, DigitalGlobe, GeoEye, Earthstar Geographics, CNES/Airbus DS, USDA, USGS, AEX, Getmapping, Aerogrid, IGN, IGP, swisstopo, and the GIS User Community





Cannon RD

Park Lawn RD

Stephen DR

HUMBER RIVER

S Kingsway

Undermere AVE

CATFISH POND  
Elliis AVE

The Queensway

Humber Treatment Plant

GO Transit  
Gardiner EXPY

Ringley AVE

Lakeshore BLVD W

The Queensway

Ontario Food Terminal Board

Humber Loop

Palace Pier CRT  
Waterfront DR

Gardiner EXPY

LAKE ONTARIO

GO Transit

Brookers Lane

Marine Parade DR

Park Lawn RD

Lakeshore BLVD W

Humber Bay Park East

*Should be shown as  
separate street  
for street 5-11*





Cannon RD  
Park Lawn RD  
Stephen DR  
Ringley AVE  
The Queensway  
Humber Treatment Plant  
Humber River  
S Kingsway  
The Queensway  
GO Transit  
Gardiner EXPY  
Lakeshore BLVD W  
Ontario Food Terminal Board  
Humber Loop  
Palace Pier CRT  
Waterfront DR  
Brookers Lane  
Marine Parade DR  
Gardiner EXPY  
GO Transit  
Park Lawn RD  
Lakeshore BLVD W  
Humber Bay Park East

LAKE ONTARIO



Data Sources: AECOM, \*MNR, City of Toronto  
\*Contains information licensed under the Open Government Licence Ontario.  
Source: Esri, DigitalGlobe, GeoEye, Earthstar Geographics, CNES/Airbus DS, USDA, USGS, AEX, Getmapping, Aerogrid, IGN, IGP, swisstopo, and the GIS User Community





Park Lawn RD

Cannon RD

Stephen DR

HUMBER RIVER

S Kingsway

Undermere AVE

CATFISH POND  
EIR AVE

The Queensway

Humber Treatment Plant

GO Transit Gardiner EXPY

Ringley AVE

Lakeshore BLVD W

The Queensway

Ontario Food Terminal Board

Humber Loop

This area appears to be under construction

Waterfront  
Brokers

Gardiner EXPY

Waterfront DR

LAKE ONTARIO

GO Transit

People going to work  
from the Humber  
area using the  
transit loop (LRT)  
often going through  
the Humber Loop  
station. Some people  
are also going to  
work in the area.

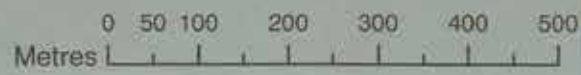
Brokers

Marine Parade DR

Waterfront TAXI

Somebody  
says it's  
not a taxi

Humber Bay Park East



Data Sources: AECOM, \*MNRF, City of Toronto  
\*Contains information licensed under the Open Government Licence Ontario.  
Source: Esri, DigitalGlobe, GeoEye, Earthstar Geographics, CNES/Airbus DS,  
USDA, USGS, AEX, Getmapping, Aerogrid, IGN, IGP, swisstopo, and the GIS  
User Community





DISCONNECT BETWEEN  
SUNSEA  
&  
WEST OF HUMBER

QUALITY OF SERVICE  
(FOR TTC)

MULTI-MODAL HUB  
- CHOICE OF TRANSIT

Food  
Terminal

Allow bus through  
streetcar tunnel &  
merge 2, 66  
routes to increase  
freq. to subway

Line Loss  
on Lake  
Shore

access from  
Queensway  
to Lake  
Shore in this  
area to reduce  
congestion.

does not  
work

Southbound Gardiner  
Collaborate bus detour  
& Lakeshore Blvd W  
to reduce commuter  
through traffic

Walk way to  
Mimco station  
from Park Lawn  
& Lakeshore

Better lighting  
@ Park Lawn &  
Lakeshore  
to have way flags  
for left-turn lanes

LAKE  
ONTARIO



Data Sources: AECOM, \*MNR, City of Toronto  
\*Contains Information licensed under the Open Government Licence Ontario.  
Source: Esri, DigitalGlobe, GeoEye, Earthstar Geographics, CNES/Airbus DS,  
USDA, USGS, AEX, Getmapping, Aerogrid, IGN, IGP, swisstopo, and the GIS  
User Community





Cannon RD

Park Lawn RD

Stephen DR

Ringley AVE

The Queensway

Ontario Food Terminal Board

Humber Treatment Plant

Humber Loop

HUMBER RIVER

S Kingsway

The Queensway

GO Transit Gardiner EXPY

Lakeshore BLVD W

CATFISH POND

ELLIS AVE

Undermere AVE

IMPROVE WALLING AND BRIDGE TO INCLUDE OVERLAND

CONSIDER INCLUDE HUBBARD LOOP TUNNEL

CONSIDER SIGNPOSTS IN HUBBARD LOOP THIS SIDE

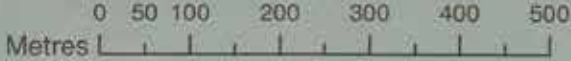
GO STATION HERE PLEASE

SEE ONE LANE ON LAKESHORE BLVD DRIVING AT PARADE FLEX (LEFT TURN)

TRY TO OPEN MORE PARKING SPACE

IMPROVE TRAFFIC IN THE MORNING LAKESHORE & PARKLAWN RUSH HOUR DELAYS

LAKE ONTARIO



Data Sources: AECOM, \*MNRF, City of Toronto  
 \*Contains Information licensed under the Open Government Licence Ontario.  
 Source: Esri, DigitalGlobe, GeoEye, Earthstar Geographics, CNES/Airbus DS, USDA, USGS, AEX, Getmapping, Aerogrid, IGN, IGP, swisstopo, and the GIS User Community





Cannon RD

Park/Lawn RD

Stephen DR

Ringley AVE

The Queensway

Ontario Food Terminal Board

Gardiner EXPY

GO Transit

Park Lawn RD

Lakeshore BLVD W

Humber Treatment Plant

Humber Loop

Brookers Lane

Marine Parade DR

Humber Bay Park East

HUMBER RIVER

S Kingsway

The Queensway

GO Transit Gardiner EXPY

La Keshore BLVD W

Palace Pier CRT  
Waterfront DR

LAKE ONTARIO



Data Sources: AECOM, \*MNR, City of Toronto  
\*Contains Information licensed under the Open Government Licence Ontario  
Source: Esri, DigitalGlobe, GeoEye, Earthstar Geographics, CNES/Airbus DS, USDA, USGS, AEX, Getmapping, Aerogrid, IGN, IGP, swisstopo, and the GIS User Community

*Handwritten note:* This line to draw along for fish

*Handwritten note:* Designated Discharge Point

*Handwritten note:* Designated Discharge Point

*Handwritten note:* Waters To cross