

PARK LAWN LAKE SHORE



TRANSPORTATION MASTER PLAN



MORE CONNECTIONS



SAFER ACCESS



QUALITY URBAN DESIGN

Stakeholder Workshop

October 5, 2016



Welcome

Meeting Goals

1. Share information about the Study and its process
2. Discuss existing conditions and potential transportation improvements
3. Generate a list of issues and suggestions based on first hand experience
4. Understand diverse view points
5. Share ideas with the Project Team in advance of Public Meetings
6. Provide a sense of the broader community's needs and concerns



MORE
CONNECTIONS



SAFER
ACCESS



QUALITY
URBAN DESIGN

Agenda

6:30 – Welcome and Introductions

6:45 – Presentation

7:00 – Questions of Clarification

7:10 – Discussion Question 1

**What does the City need to know about
transportation in the Park Lawn Lake Shore area?**

8:00 – Discussion Question 2

**What transportation improvements could be
considered?**

8:20 – Public Meeting and Next Steps

8:30 – Meeting Adjourns



MORE
CONNECTIONS



SAFER
ACCESS



QUALITY
URBAN DESIGN

Code of Conduct

DO	DO NOT
Stick to the agenda	Dominate the discussion
Participate in the discussion	Swear, yell, name call, or use the word 'liar'
Respect differing opinions	Interrupt or cut people off
Be courteous	Make personal attacks
Listen to others	Make derogatory comments based on gender, race, ethnicity, religion, age, sexual orientation or disability
Speak one at a time	Monopolize the agenda
Back up your facts	
Enter or leave the room quietly	
Set cell phones to silent	
Take private discussions outside	



MORE
CONNECTIONS



SAFER
ACCESS



QUALITY
URBAN DESIGN

Code of Conduct

- We welcome and encourage your participation. To ensure that everyone has the opportunity to participate fairly, please respect the Code of Conduct.
- All individuals conducting business and attending meetings with the City of Toronto are expected to comply with the [Human Rights and Harassment Policy](#). No form of discrimination or harassment is tolerated, ignored or condoned.
- **In the event of non-compliance with the Human Rights and Harassment Policy, you may be asked to leave the meeting immediately.**



MORE
CONNECTIONS



SAFER
ACCESS



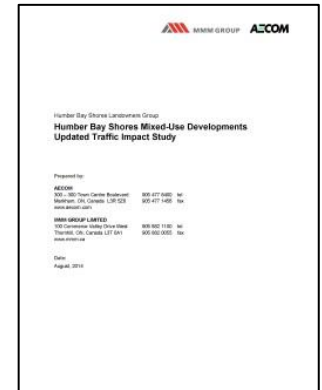
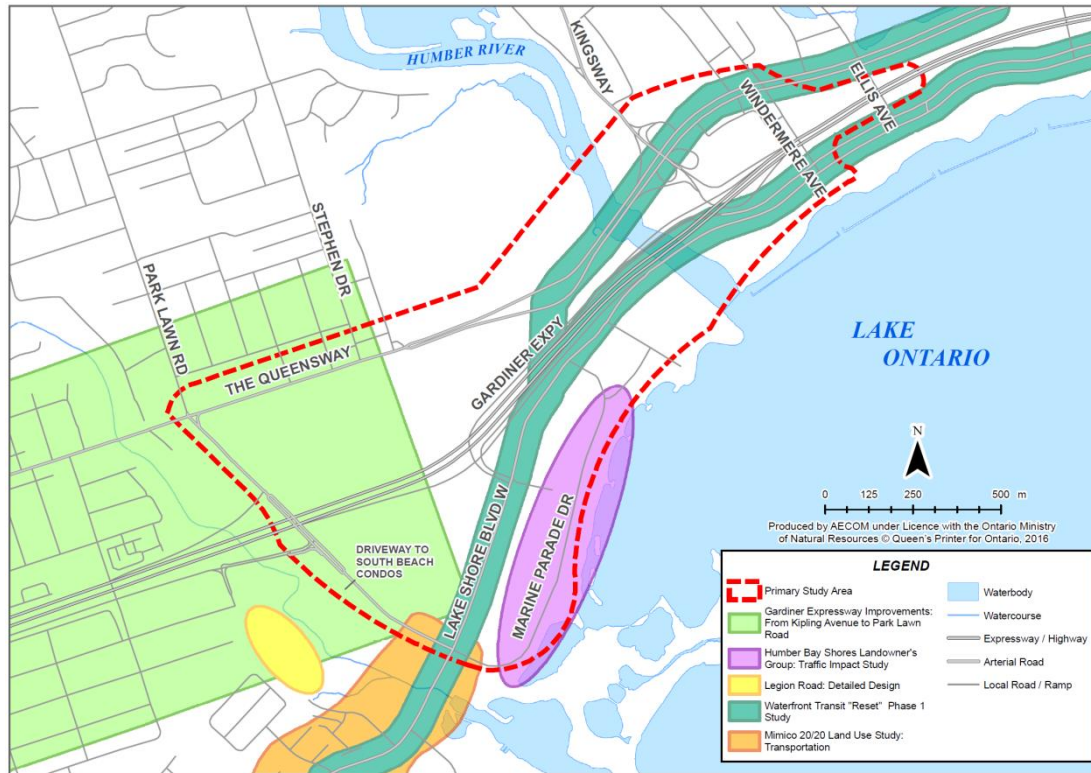
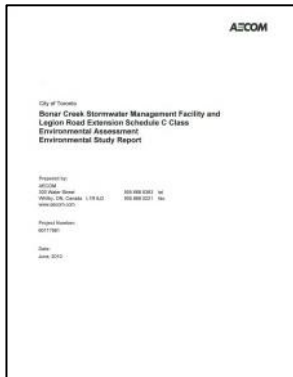
QUALITY
URBAN DESIGN

Study Area



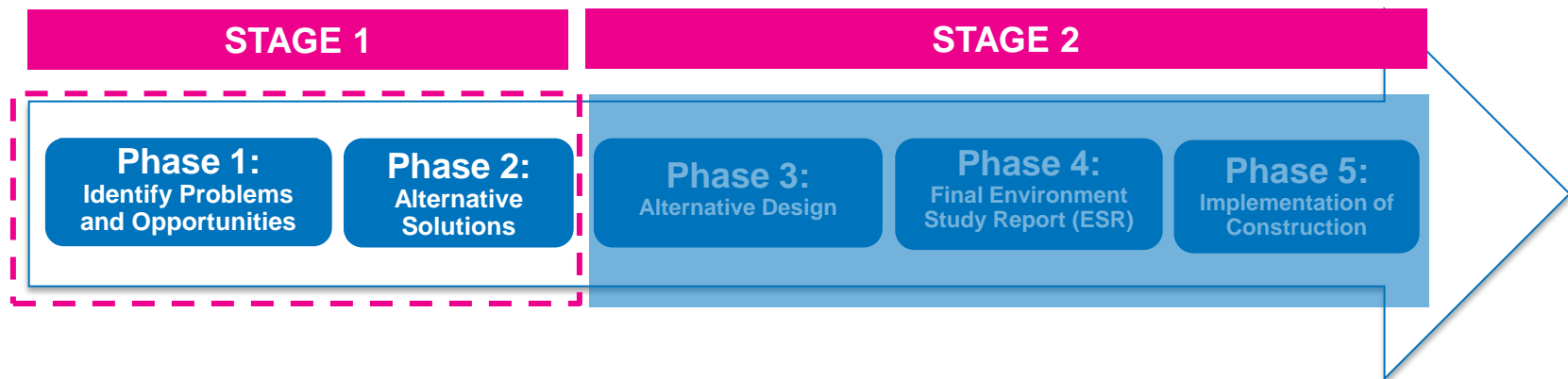
- MORE CONNECTIONS
- SAFER ACCESS
- QUALITY URBAN DESIGN

Area Studies that Influence this TMP

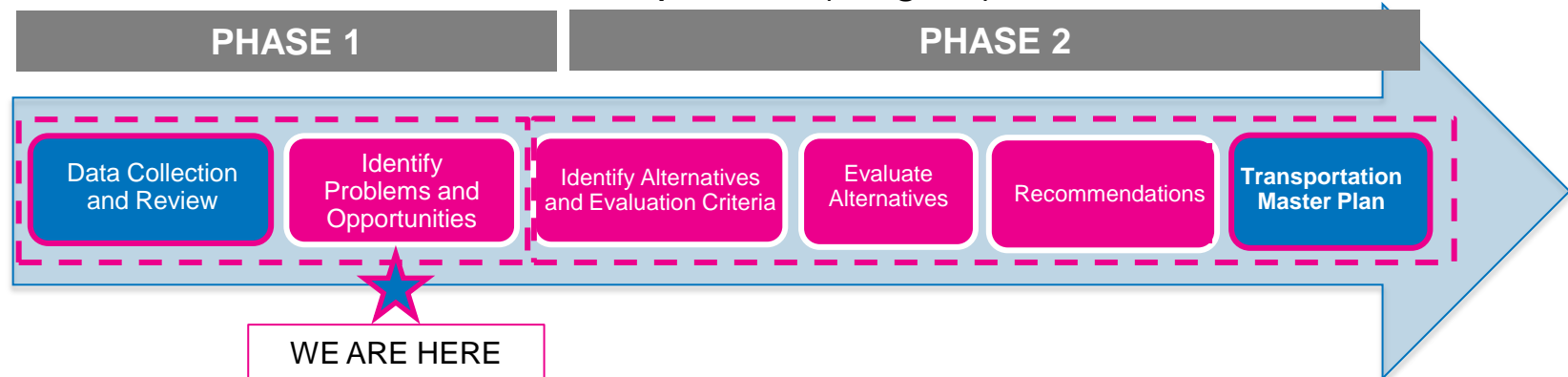


Environmental Assessment Process

- The Municipal Class Environmental Assessment (MCEA) Process includes 5 phases from identifying the problems and opportunities to implementation of the project



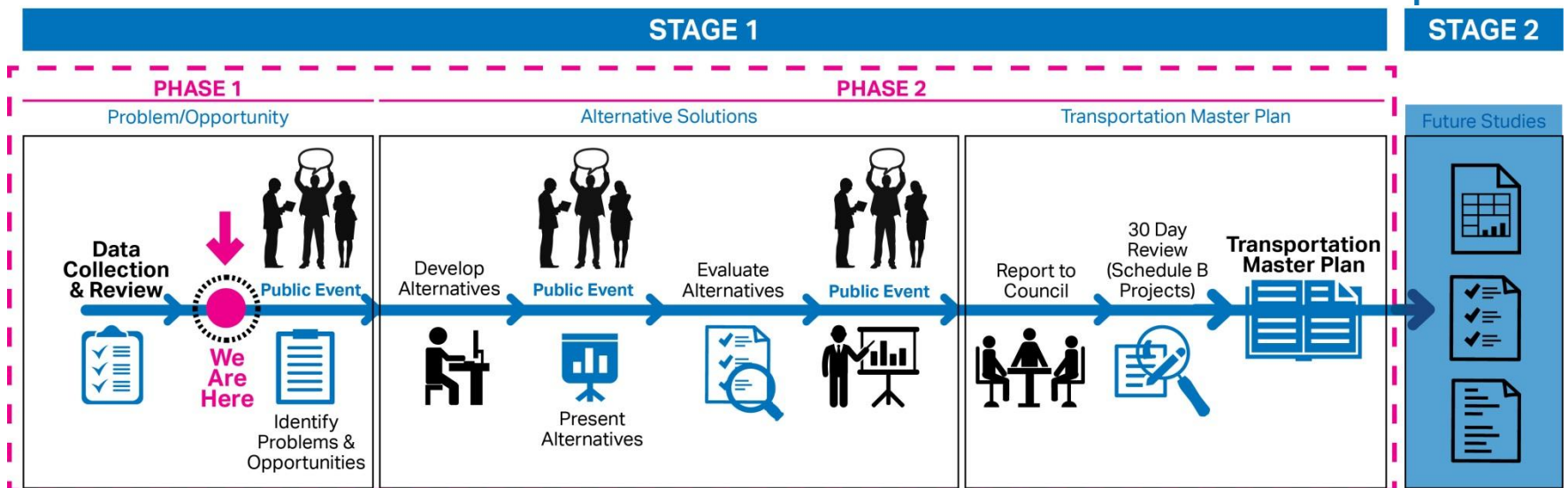
- This TMP covers the first two phases (stage 1) of the MCEA Process



TMP Study Process

- Transportation Master Plans are an approved Provincial process to address infrastructure planning projects under the Environmental Assessment Act
- It creates a framework for planning a range of infrastructure projects that may be implemented over a period of time
- Public stakeholder consultation is a key component

- MORE CONNECTIONS
- SAFER ACCESS
- QUALITY URBAN DESIGN



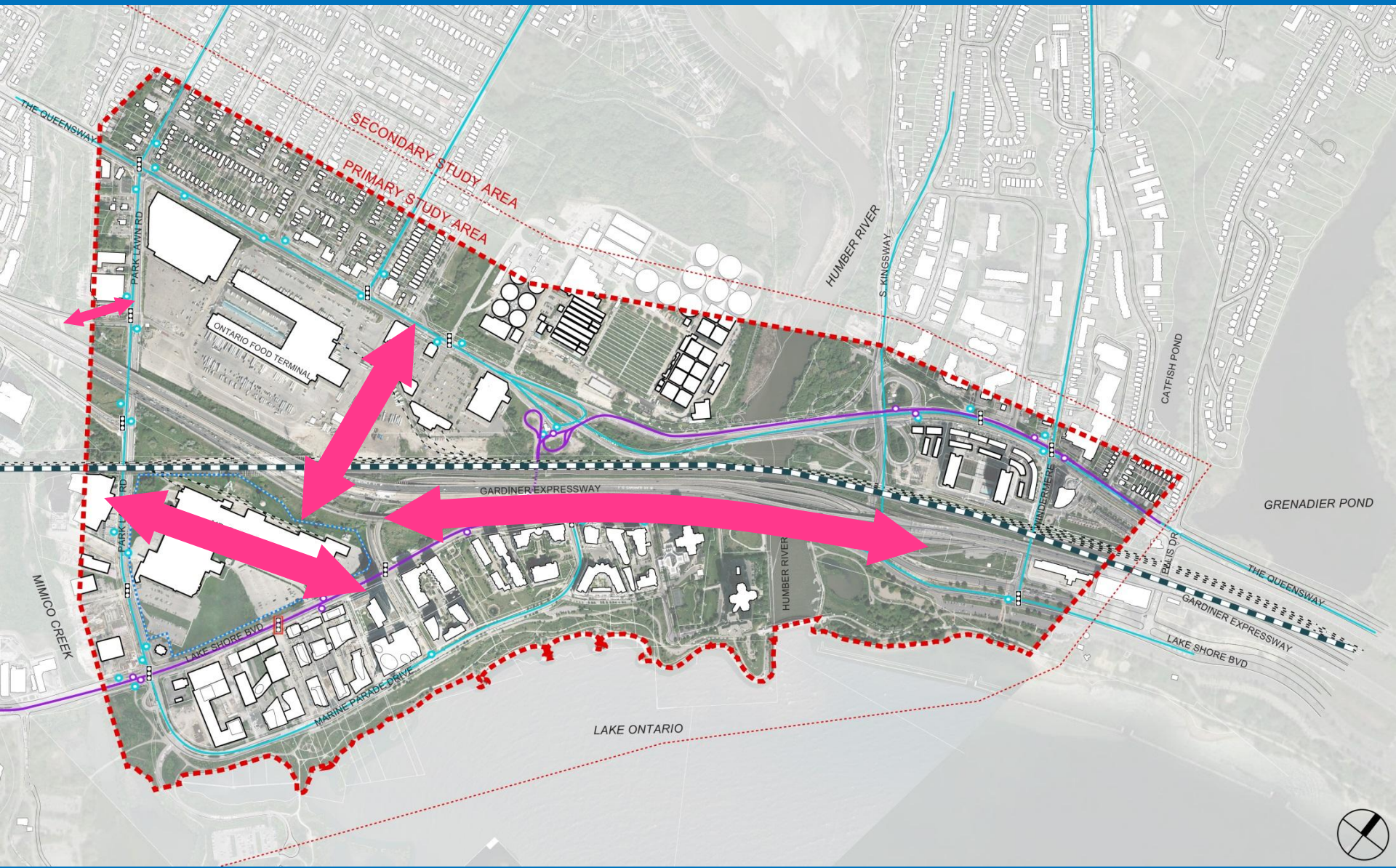
Problem and Opportunity Statement

The Park Lawn Road and Lake Shore Boulevard West area has limited options to connect to surrounding areas. In combination with significant growth, increased demands are placed on the transportation network.

An integrated approach is required to meet the existing and future needs of a diverse range of users by providing:

- New connections and better access to roads, transit, and pathways;
- Additional safe and convenient crossings of physical barriers;
- Planning for investment in public transit, pedestrian, and cycling networks; and
- High quality urban design

Potential Road Network Improvements



Study Elements



- Pedestrians
- Cyclists
- Transit
- Passenger Vehicles and Trucks
- Urban Design and Streetscaping



MORE CONNECTIONS

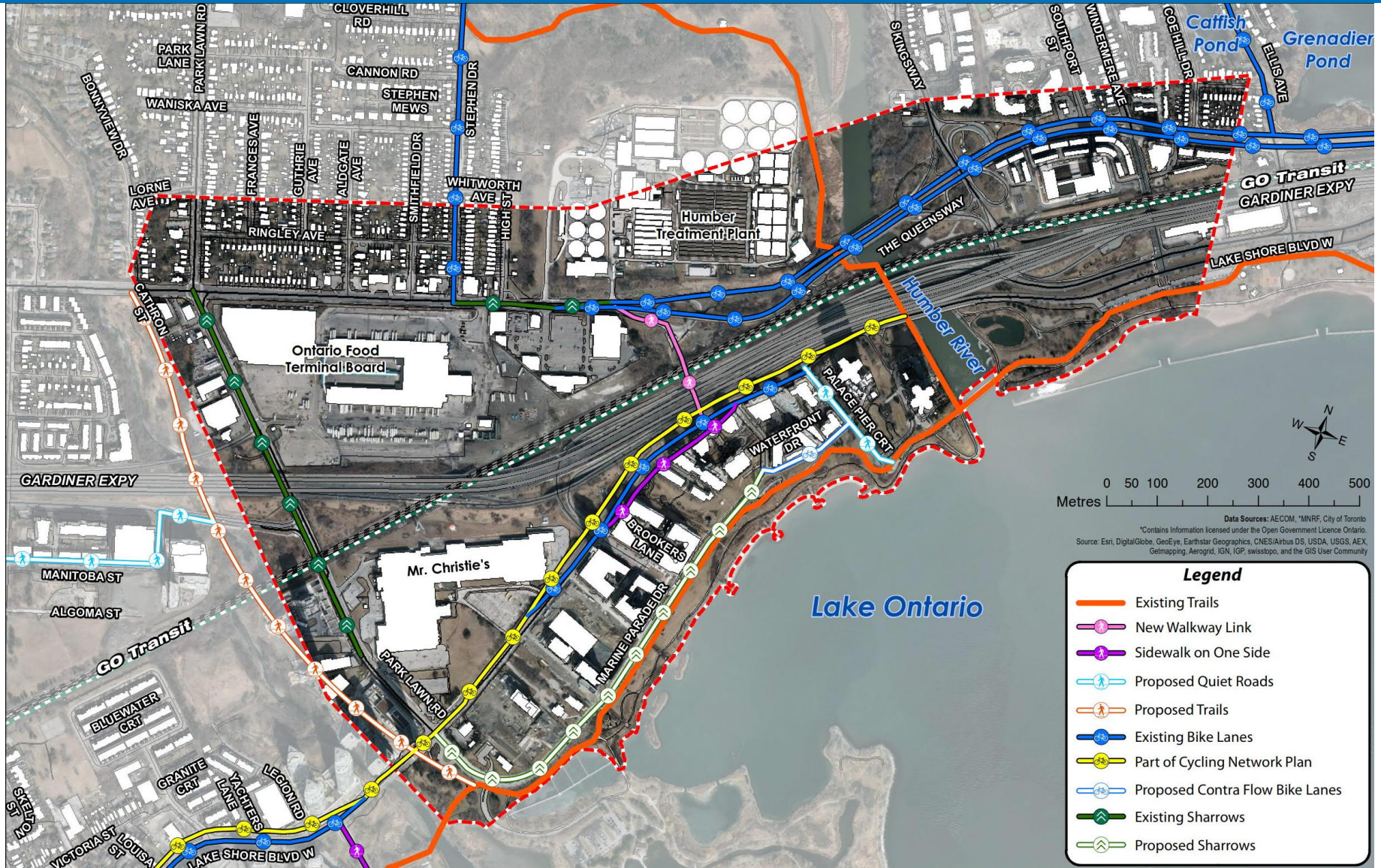


SAFER ACCESS



QUALITY URBAN DESIGN

Active Transportation



Public Consultation

Goals

- Ensure appropriate and accessible opportunities to voice concerns, ask questions, and raise comments
- Deliver a transparent consultation process
- Engage local stakeholder groups to inform planning and decision-making
- Fulfill requirements of Municipal Class Environmental Assessment process



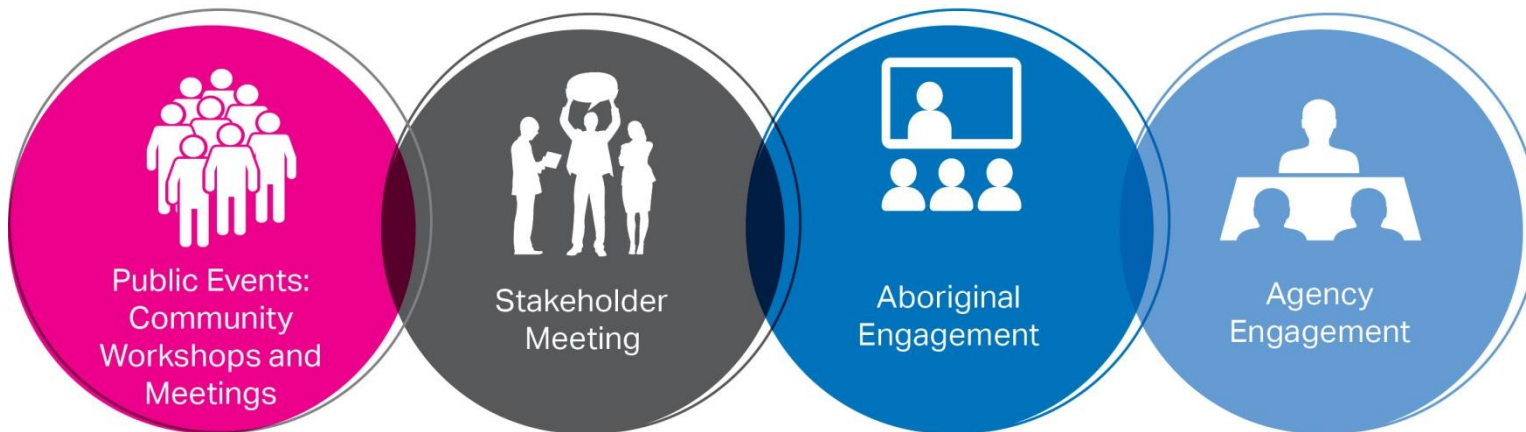
MORE
CONNECTIONS



SAFER
ACCESS



QUALITY
URBAN DESIGN



Study Timelines

STEP 1 – Fall 2016	STEP 2 – Spring 2017	STEP 3 – Fall 2017
Communications and Planning	Stakeholder Meetings	Stakeholder Meetings
Stakeholder Meetings	Public Event 2	Notice of Completion
Public Event 1	Public Event 3	



WEBSITE UPDATES
EMAIL UPDATES
PUBLIC NOTICES IN LOCAL NEWSPAPERS
NEWSLETTERS DELIVERED TO YOUR DOOR
COMMENT RESPONSE AND DOCUMENTED COMMENT RESPONSES
CONSULTATION REPORTS

Discussion Question 1

What does the City need to know about transportation in the Park Lawn Lake Shore area?

What have been the transportation issues historically?

What's not working?

Where are the barriers/pressure points?



MORE
CONNECTIONS



SAFER
ACCESS



QUALITY
URBAN DESIGN

Discussion Question 2

What transportation improvements could be considered?

What do you want to see?

What's most urgent?

What opportunities should be pursued?

Is there anything that works well that can be enhanced?

What's working? What should stay the same?



MORE
CONNECTIONS



SAFER
ACCESS



QUALITY
URBAN DESIGN

Next Steps

- Traffic modelling
- Meetings with Technical Advisory Committee
- Preparing for community workshops
 - Notice of Commencement
 - Newsletters
 - Government Agency and Aboriginal Engagement
- Community Workshops to take place in late November and early December 2016



MORE
CONNECTIONS



SAFER
ACCESS



QUALITY
URBAN DESIGN

THANK YOU !



MORE
CONNECTIONS



SAFER
ACCESS



QUALITY
URBAN DESIGN

Contact Information:

Robyn Shyllit
Sr. Public Consultation Coordinator
Public Consultation Unit
City of Toronto – Metro Hall
55 John Street, 19th Floor,
Toronto, Ontario M5V 3C7
T: 416.392.3358
E: rshyllit@toronto.ca

www.toronto.ca/parklawnlakeshore