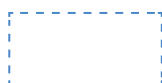


# APPENDIX A: Sleeping Area / Personal Space Examples

The following examples illustrate

- Single bed configurations that comply with personal space requirements (i.e., a minimum of 3.75 m.<sup>2</sup> or 37.7 ft.<sup>2</sup> per person), with a minimum lateral separation distance of 0.75 m. (2.5 ft.) between closest sides of adjacent beds
- Bunk bed configurations that comply with personal space requirements;
- Separation distance between top and bottom bunks (i.e., a minimum of 1.1 m. (3.5 ft.) of overhead clearance).

In the illustrated examples, the following symbols mean:



Allocated personal space (a minimum of 3.75 m.<sup>2</sup> or 37.7 ft.<sup>2</sup>)



Single bed



Bunk bed



Lateral separation distance (a minimum of 0.75 m. or 2.5 ft.)



Wall



Ceiling



Floor



Window



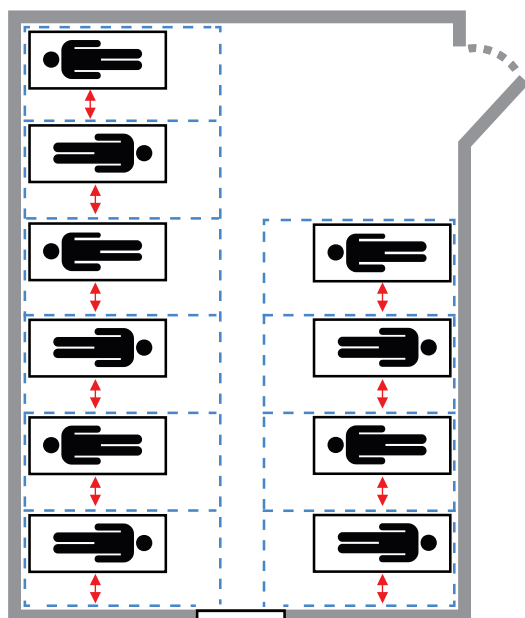
Door/entrance

## Single Bed Configurations

### Examples that Comply with Sleeping Area / Personal Space Requirements

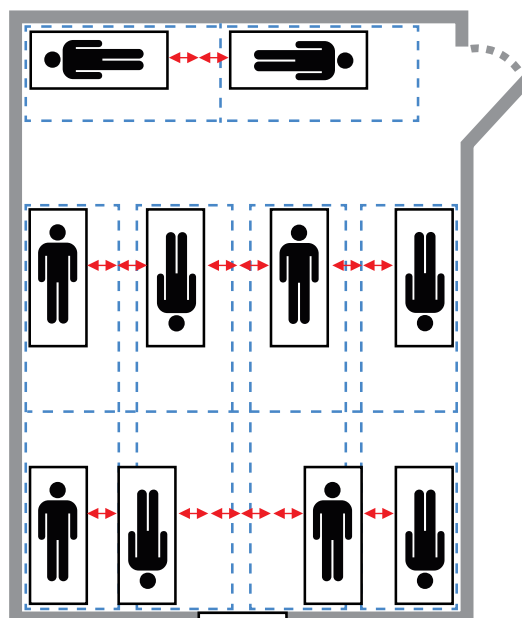
In the following examples, beds are arranged in an alternating 'head-to-toe' arrangement to minimize transmission of communicable diseases.

**Example A: 10 single beds / 10 clients**



- Example A meets the personal space requirements and separation distance requirements between beds.
- Example A allows for better flow of foot traffic (e.g., in event of evacuation) and facilitates more respectful (i.e., less disruptive) and efficient bed checks than example B.

**Example B: 10 single beds / 10 clients**



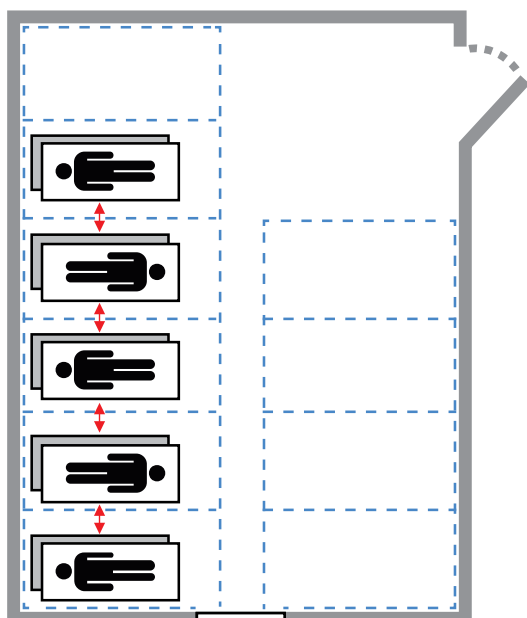
- Example B meets the personal space requirements and exceeds separation distance requirements between beds.
- Example B results in more obstructed flow (e.g., in event of evacuation) and may result in more disruptive bed checks.
- Beds nearest the window have been moved aside to allow adequate clearance around the window (e.g., facilitates easy access to window).

## Bunk Bed Configurations

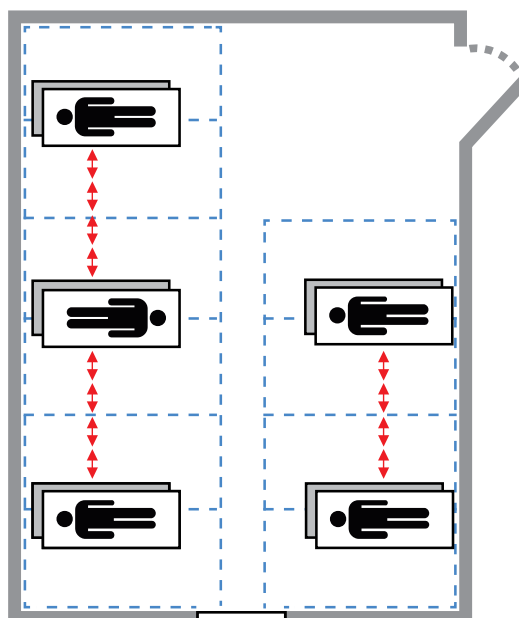
### Examples that Comply with Sleeping Area / Personal Space Requirements

In the following examples, bunks are arranged in an alternating “head-to-toe” arrangement to minimize transmission of communicable diseases.

**Example C: 5 bunk beds / 10 clients**



**Example D: 5 bunk beds / 10 clients**



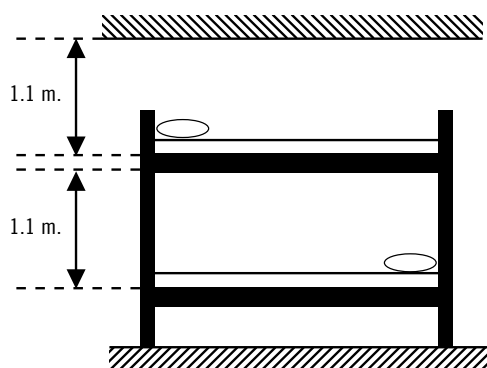
- Example C meets the personal space requirements and separation distance requirements between beds.
- Example C places beds closer together to free up floor space. Since space standards apply per person, not per bed, the number of bunk beds is limited to five (5). Therefore, the freed up floor space be used to house lockers, dresser or other furniture, but not more beds.
- Example D meets the personal space requirements and exceeds separation distance requirements between beds.

## Overhead Separation Distance

### Bunk Beds

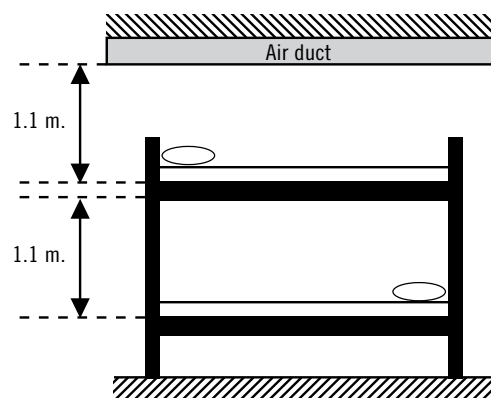
In the following examples, a minimum clearance of 1.1 m. (3.5 ft.) exists between the top of a bed frame to the lowest hanging section of an overhead object (e.g., upper bunk frame, light fixture, bulkhead, air duct, plumbing, etc.)

**Example E: Overhead Separation Distance**



- The minimum overhead clearance for the lower bunk is measured from the top of the lower bunk frame to the underside of the upper bunk frame.
- The minimum overhead clearance for the upper bunk is measured from the top of the upper bunk frame to the underside of the ceiling.

**Example F: Overhead Separation Distance**



- The minimum overhead clearance for the lower bunk is measured from the top of the lower bunk frame to the underside of the upper bunk frame.
- The minimum overhead clearance for the upper bunk is measured from the top of the upper bunk frame to the underside of the air duct.