

CONCRETE LEGEND

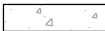

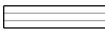
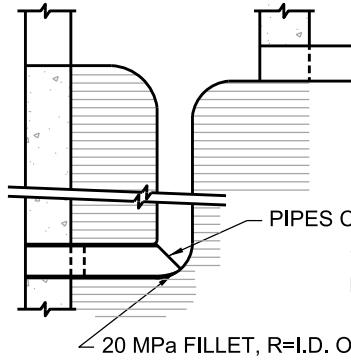
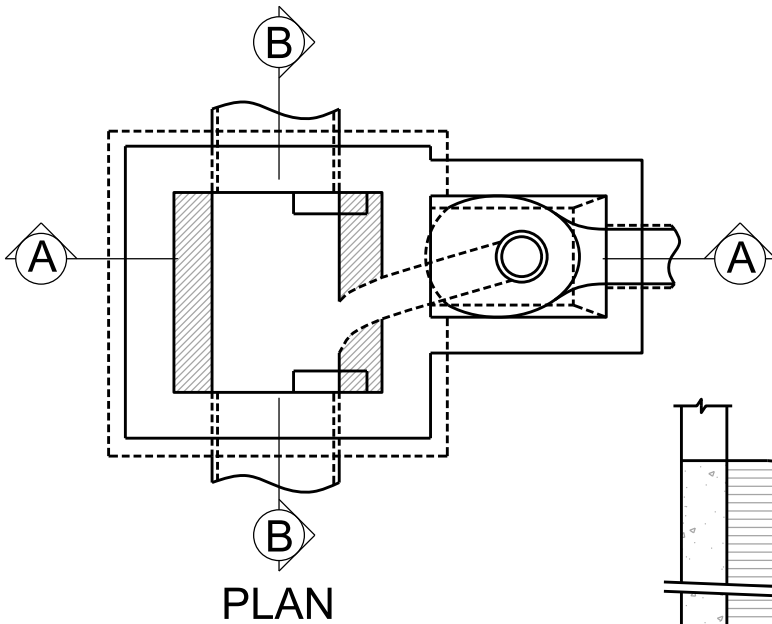
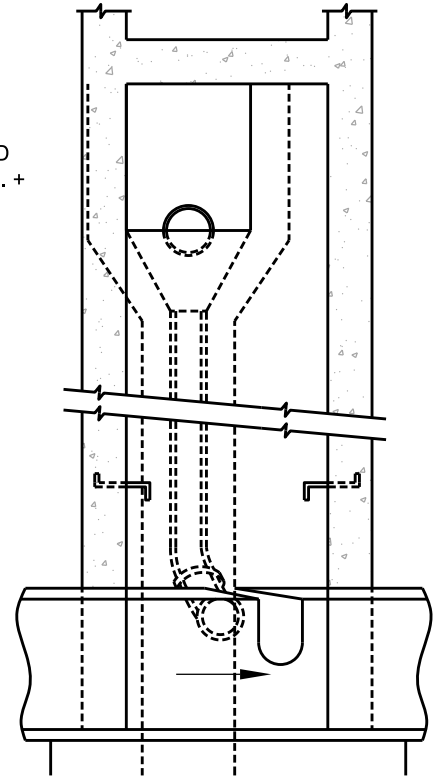
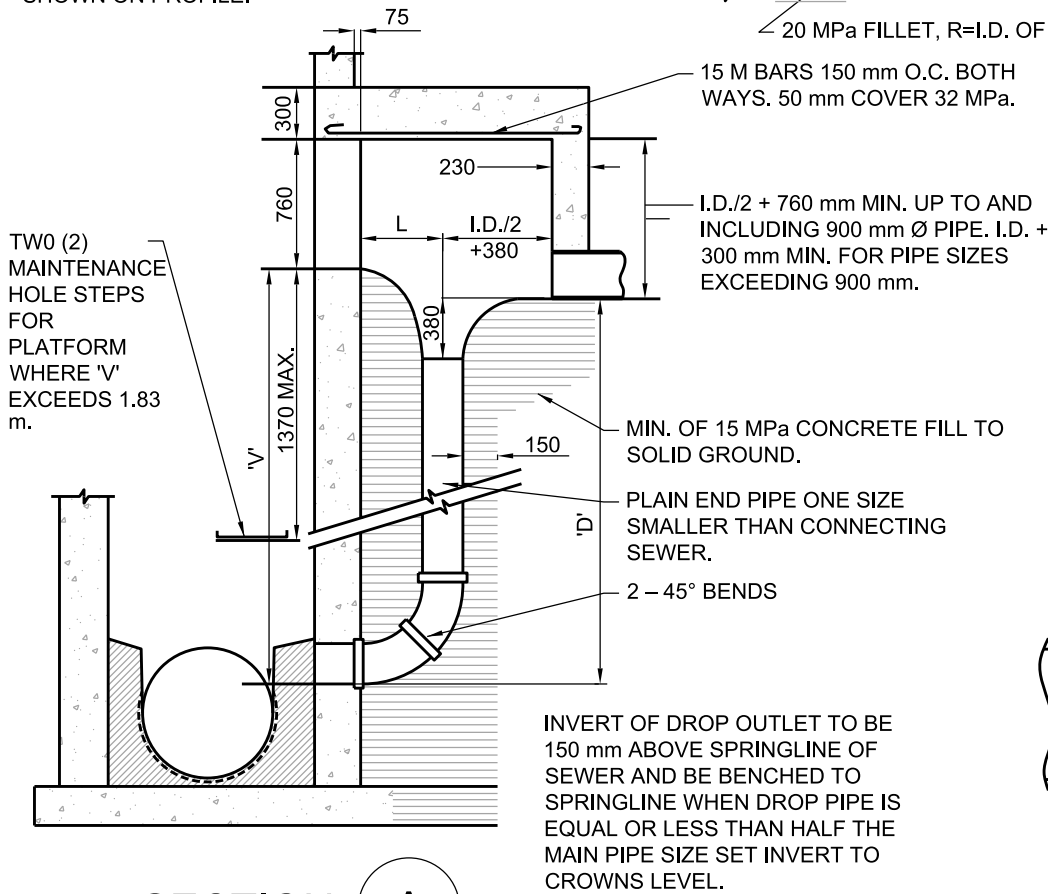
-  STRUCTURE 20 MPa WITH 5-8 % AIR ENTRAINMENT
-  BENCHING 20MPa WITH 5-8% AIR ENTRAINMENT
-  ENCASEMENT 20 MPa

TABLE OF MINIMUM DIMENSIONS		
SIZE OF DROP PIPE	'D' MIN.	'L' MIN.
200 – 450	1145	610
525	1220	660
600	1320	710
675	1420	760
750	1525	810
825	1625	865
900	1725	915



THIS DETAIL APPLIES ONLY WHEN 'D' IS LESS THAN 'D' MIN. IN TABLE

ALL DIMENSIONS TO BE SHOWN ON PROFILE.



SECTION A

SECTION B

NOTES:  
 WHEN SIZE OF DROP PIPE EXCEEDS 900 mm, A FORMED OR PRECAST 90° BEND WILL BE USED INSTEAD OF TWO (2) 45° BENDS AND DETAILED ON DRAWING.

All dimensions are in millimetres unless otherwise shown.



ENGINEERING AND CONSTRUCTION SERVICES STANDARD DRAWING

REV 1

APR 2013

SPECIAL DROP CHAMBER  
 TO BE USED WHERE FLOW  
 OVERSHOOTS STANDARD DROP CONNECTION

T-1003.01-1

NTS

SHEET 1