

PROJECT HISTORY AND TIMELINE

June 2014	City of Toronto and TRCA staff met on-site to discuss project feasibility and possible trail connection alternatives
June 2014 to December 2015	Baseline Data Collection including: topographic survey, flora/fauna/ELC field surveys, aquatic assessment, tree inventory, and archaeology assessment
December 1, 2015	Request for Proposal (RFP) issued for detailed design services
April 7, 2016	Consulting team led by Aquafor Beech Ltd. was retained by TRCA
April 2016 to January 2017	Field investigation and preparation of preliminary design based on preferred alternative
Today	Public Information Centre (PIC) meeting
July 2017	Finalize detailed design package
December 2017	Secure necessary permits and approvals
January to March 2018	Procurement of construction services
July 2018 to December 2019	Construction of bridge and trail infrastructure in multiple phases. <i>Note: will need to coordinate schedule with Toronto Water for upcoming channel stabilization works</i>
Spring 2020	Final site restoration
Summer 2020	Official trail connection opening

Pan Am Path

Toronto Pan Am Path Route Map

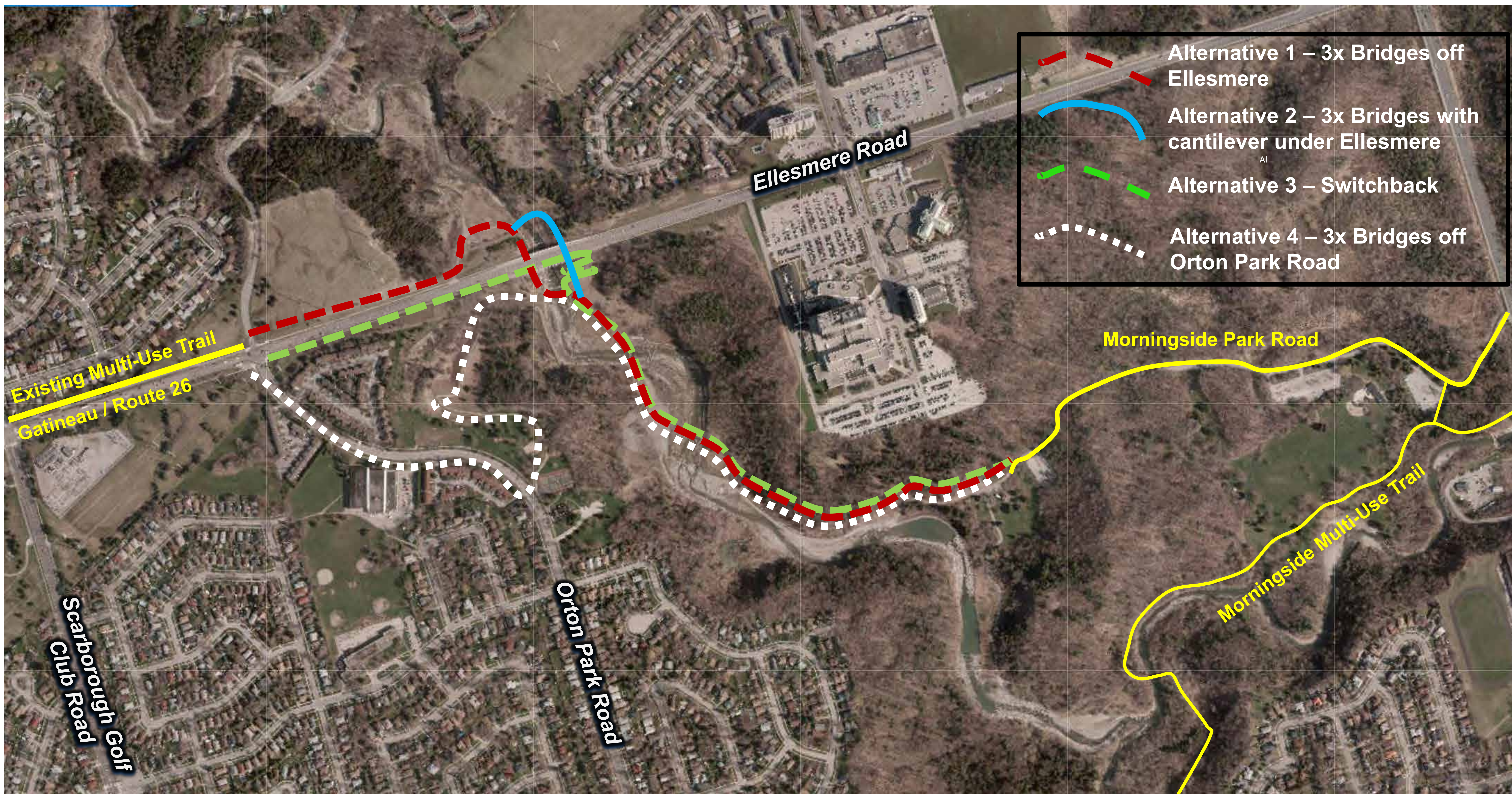


Toronto Pan Am Path Distance Indicator

km Distance in kilometers



Connection Alternatives



Alternative 1: Three (x3) bridges with primary connection off north side of Ellesmere Road

Alternative 2: Three (x3) bridges with cantilever overhang under Ellesmere Road

Alternative 3: Two (x2) bridges with switchback connection off south side of Ellesmere Road

Alternative 4: Three (x3) bridges with primary connection from Botany Hill Park

Preferred Alternative – Hybrid Alternative 1 & 4

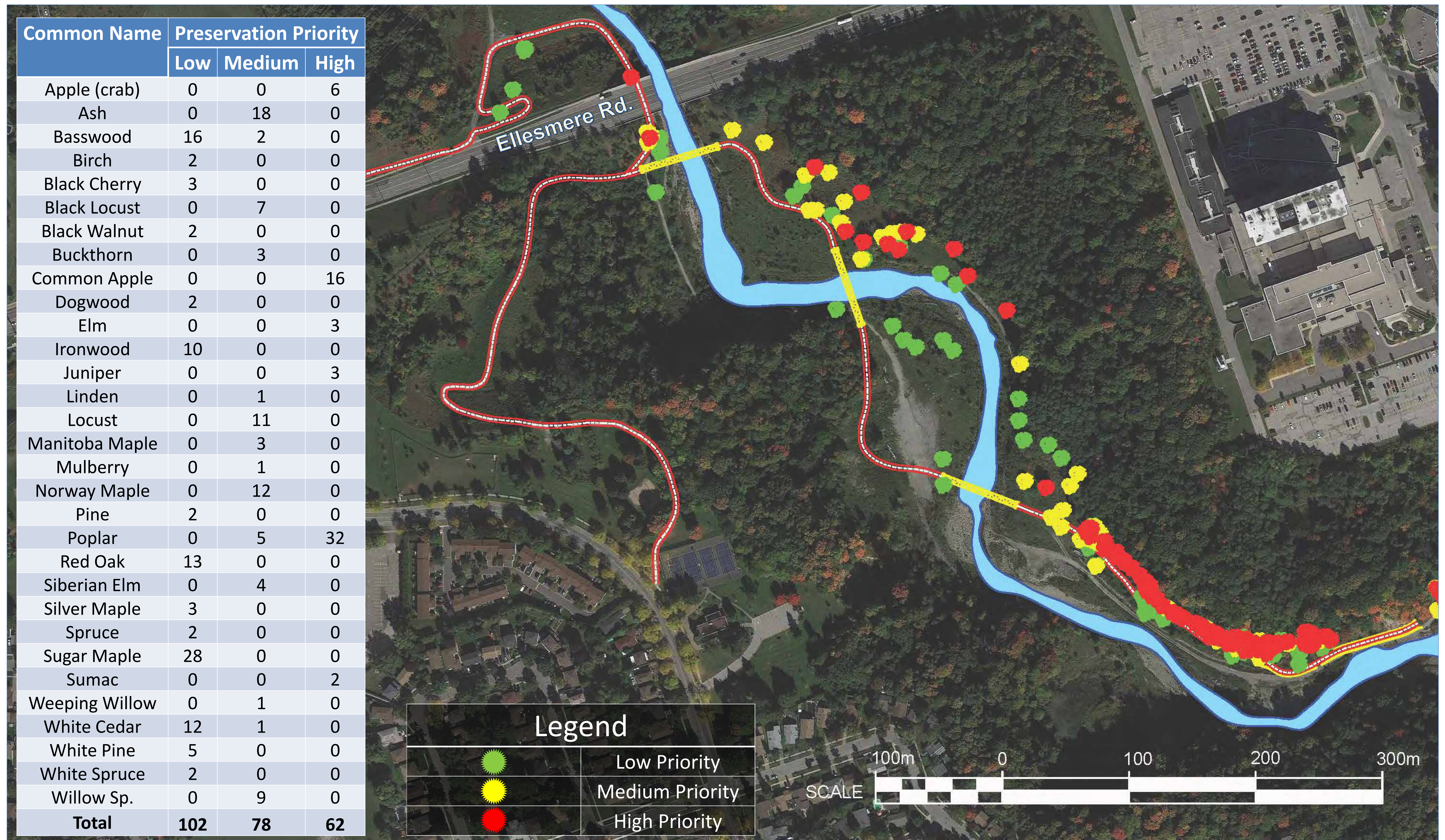


Hybrid of Alternative 1 & 4 Selected as Preferred Alternative:

- Overall best value and most technically feasible
- Provides the most opportunities for trail connections
 - Least disturbance to natural areas

VEGETATION INVENTORIES

Trees greater than 10cm diameter were inventoried. A total of 242 trees were identified and assigned a preservation priority. Removal of trees will be required to accommodate construction.



Preliminary Design Overview



Resting Area Alternatives



PAVEMENT ENHANCEMENT - LAKESHORE AND LESLIE



WASTE RECEPTACLE
TORONTO PARKS, FORESTRY AND RECREATION STANDARD



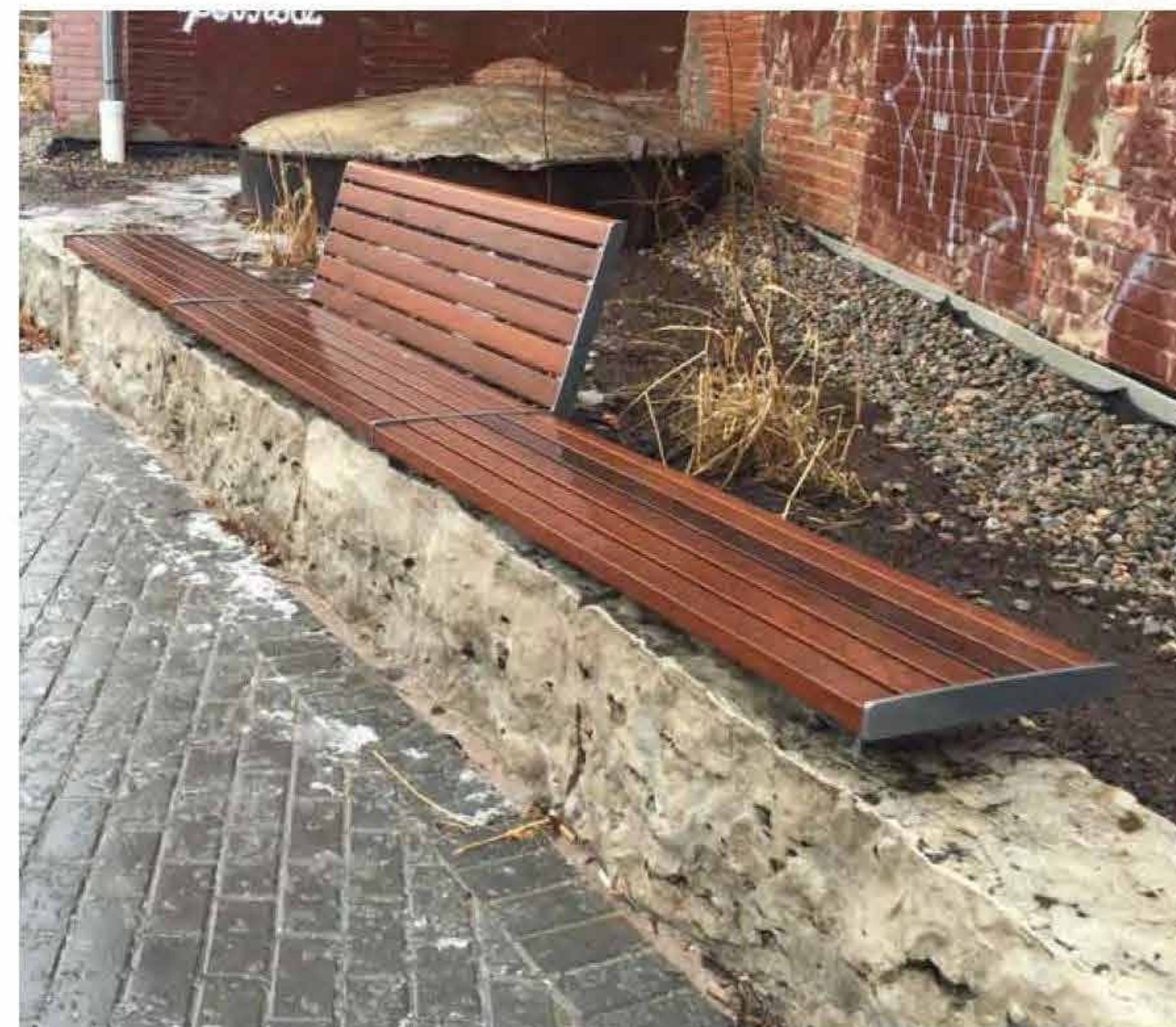
WASTE RECEPTACLE
TORONTO CO-ORDINATED STREET FURNITURE PROGRAM



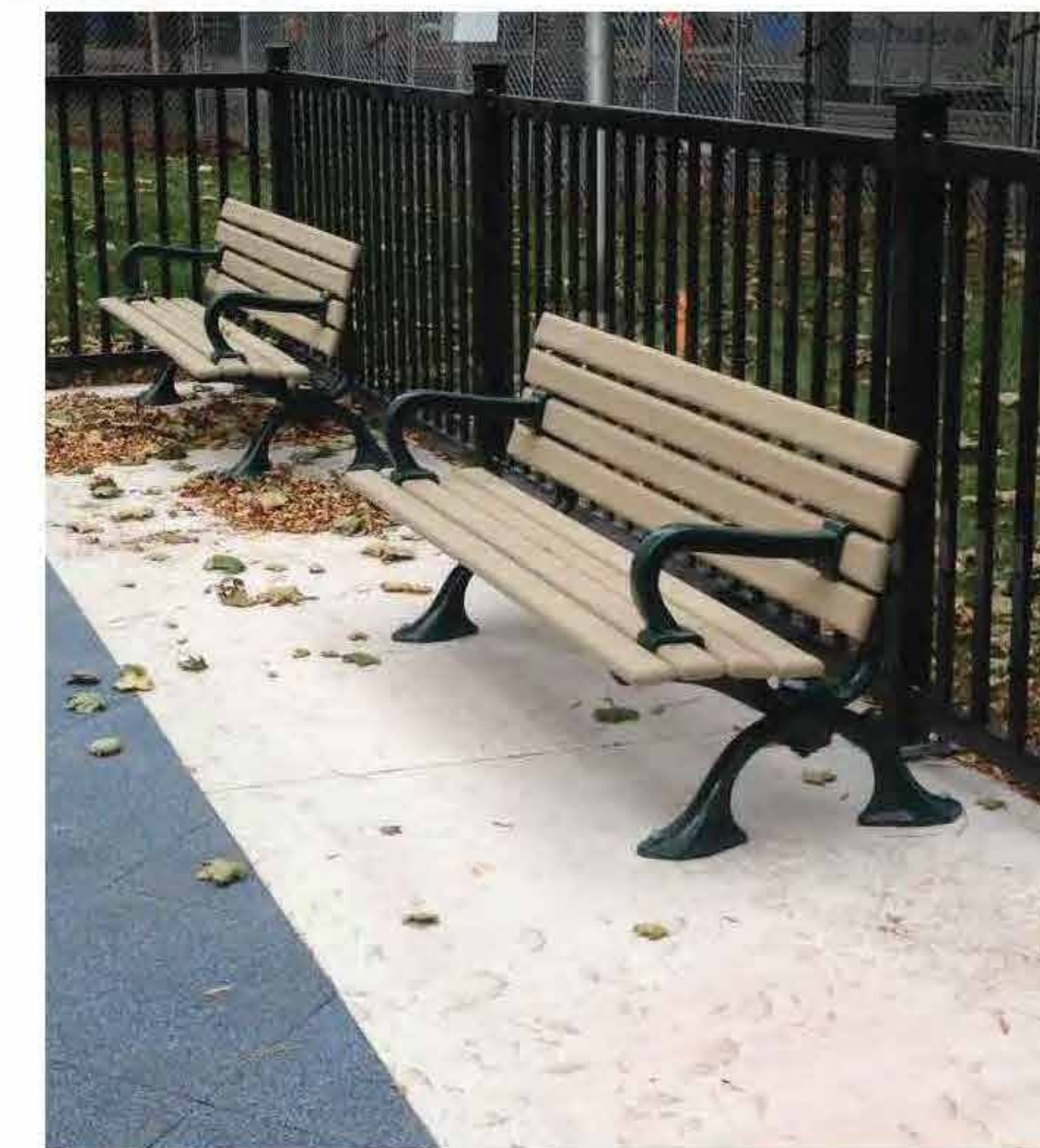
BIKE PARKING - PAN AM PATH



PAVEMENT AND SEATING - GATINEAU TRAIL
TORONTO CO-ORDINATED STREET FURNITURE PROGRAM



SEATING



SEATING
TORONTO PARKS, FORESTRY AND RECREATION STANDARD

Fencing & Barrier Alternatives



POST AND PADDLE FENCE



POST AND PADDLE FENCE



METAL GUARD



GALVANIZED STEEL OPSD BARRIER