

PLATE MATERIAL
12 mm THICK MILD STEEL PLATE.

CIRCULAR RUBBER SEAL
10 mm THICK RUBBER SHEETING CUT TO
(OUTSIDE DIAMETER + 25 mm)
DIAMETER.

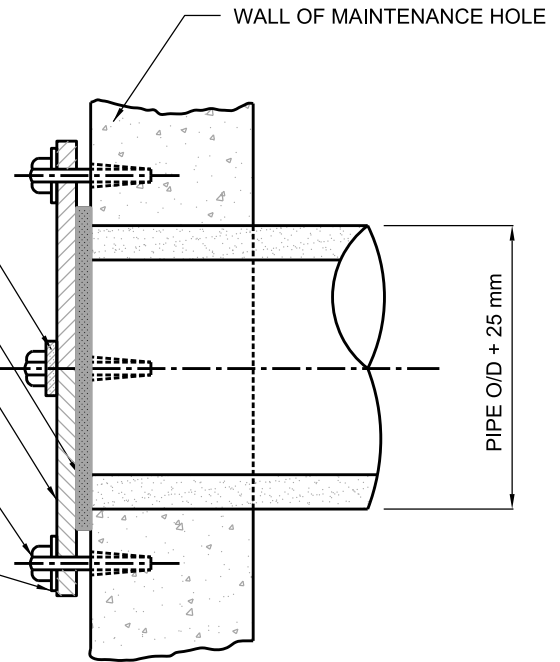
CROSS-BRACE
(IF REQUIRED)

RUBBER SEAL

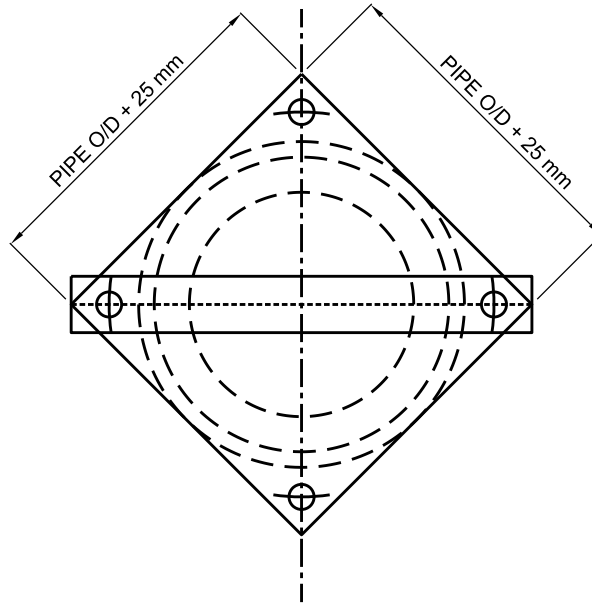
STEEL PLATE

16 M x 75 mm LONG STAINLESS STEEL
LAG BOLT AND EXPANSION SHIELD
(4 REQUIRED)
(IF CROSS-BRACE IS REQUIRED REPLACE
2 BOLTS WITH 100 mm LENGTH.)

STAINLESS STEEL WASHER (4 REQUIRED)



SECTION
(SPLIT CONDITION SHOWN)



NOTE:

MILD STEEL PLATE (AND CROSS-BRACE WHEN
REQUIRED) TO BE FORMED TO CURVATURE OF
MAINTENANCE HOLE (IF CIRCULAR) AND GALVANIZED
AFTER FABRICATION.

WHEN PIPE SIZE IS 450 mm DIAMETER OR GREATER,
STEEL PLATE IS TO BE CUT IN HALF, AND INSTALLED
WITH 12 mm THICK MILD STEEL CROSS-BRACE AS
SHOWN.

All dimensions are in millimetres unless otherwise shown.



ENGINEERING AND CONSTRUCTION SERVICES STANDARD DRAWING

REV 1

APR 2013

DETAIL OF CLEAN - OUT STOPPER

T-710.010-1

NTS

SHEET 1