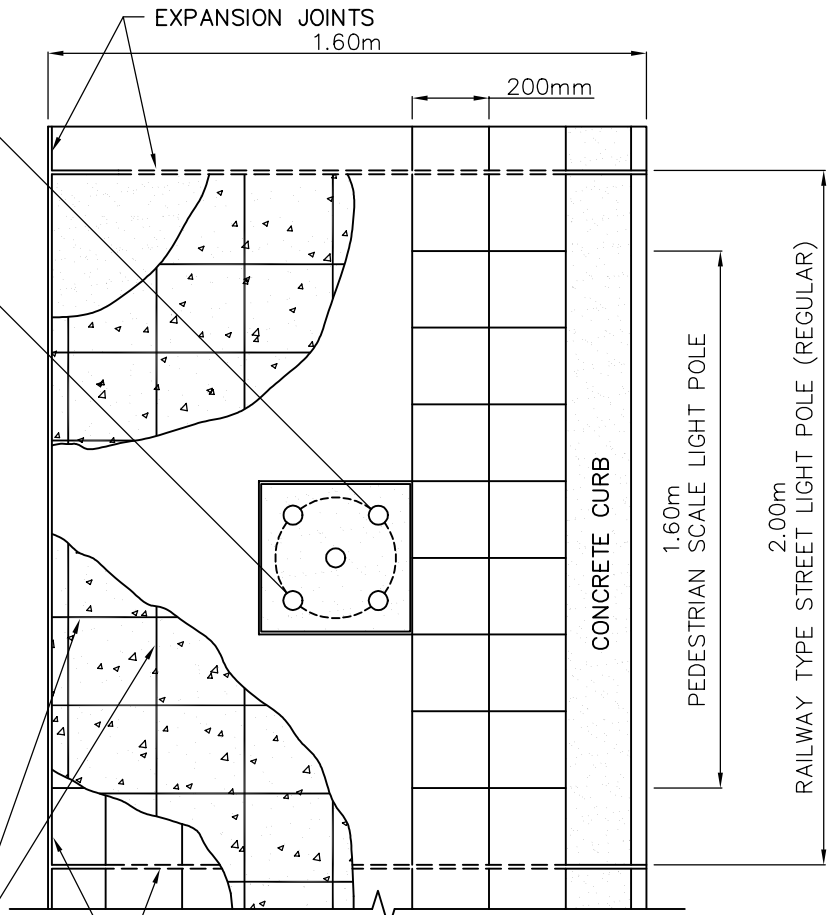


SEE TABLE

NOTES:

1. G.I. BEND – FOR SIZE & DIRECTION SEE CONST. DWG. & DWG. NO. T-310.050-5. (1 OF 4)
2. COUPLING – ATTACH PIPE COUPLING TO G.I. BEND & SET FLUSH WITH CONC. WALK.
3. PLASTIC STUD PLUG TO REMAIN IN BOLT HOLES & COUPLING UNTIL POLE IS ERECTED.
4. POLE BASE INSERT TO BE SET WITH AID OF TEMPLATE (SUPPLIED WITH INSERT) – CODE NO. 24002595.
5. NIPPLE – AFTER ERECTING POLE, A 50mm NIPPLE IS TO BE INSTALLED IN COUPLING.
6. EXTEND CONCRETE BASE TO SURFACE WHERE NO PAVERS TO BE INSTALLED.



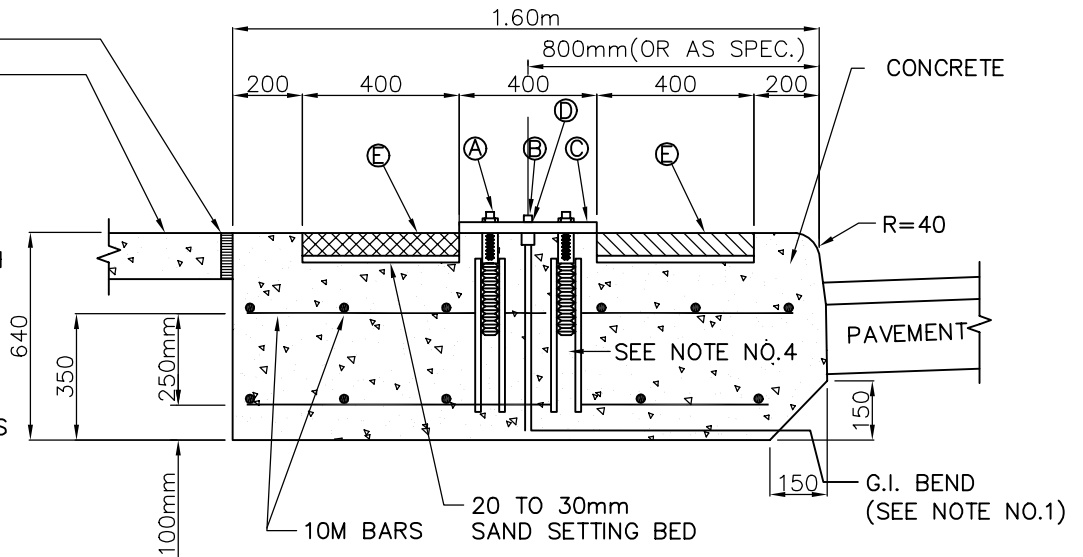
10M BARS

EXPANSION JOINTS

PLAN

EXPANSION JOINT
CONCRETE SIDEWALK

- Ⓐ 20 ϕ x200 HI-TEN STUDS WITH 5x6 DEEP SLOT (SEE TABLE)
- Ⓑ NIPPLE (SEE NOTE NO. 6)
- Ⓒ TEMPLATE
- Ⓓ COUPLING (SEE NOTE NO. 2)
- Ⓔ 200x200x50 GRANITE PAVERS OR 200x200x60 CONCRETE UNIT PAVERS



TABLE

POLE TYPE	BOLT CIRCLE ϕ	BOLT	DEPTH OF ANCHOR
PEDESTRIAN SCALE LIGHT POLE	350mm	20mm ϕ x 200mm	450mm
VICTORIAN PEDESTRIAN SCALE LIGHT POLE	300mm	20mm ϕ x 200mm	450mm
RAILWAY TYPE STREET LIGHT POLE (REGULAR)	350mm	25mm ϕ x 200mm(MIN)	600mm

SECTION

INCL. BLOOR & YORKVILLE B.I.A. LIGHTS

METRIC
ALL DIMENSIONS SHOWN HERE ARE IN MILLIMETRES UNLESS OTHERWISE NOTED



WORKS & EMERGENCY SERVICES

TECHNICAL SERVICES DIVISION
Engineering Services - Works Facilities & Structures

SCALE:	N.T.S.	CONCRETE BASE WITH POLE BASE INSERT FOR PEDESTRIAN SCALE LIGHT POLE AND FOR RAILWAY TYPE STREET LIGHT POLE (REGULAR) (WITH DRY LAID PAVEMENT INSTALLATION)	DRAWING NUMBER:
DATE:	DECEMBER, 2003		T-310.050-6
DRAFTING:	V. DIDIANO		SHEET: 1 OF 2