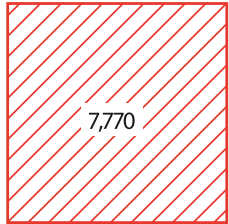


GEORGE STREET REVITALIZATION PROJECT

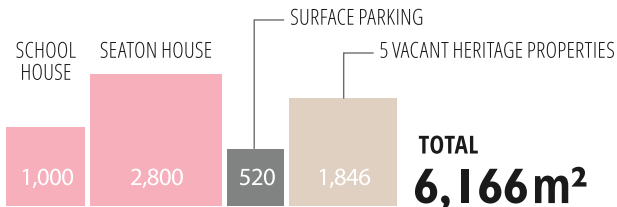
Montgomery Sisam + Hilditch June 2015

* Artist's conceptions based on 33% design and subject to change

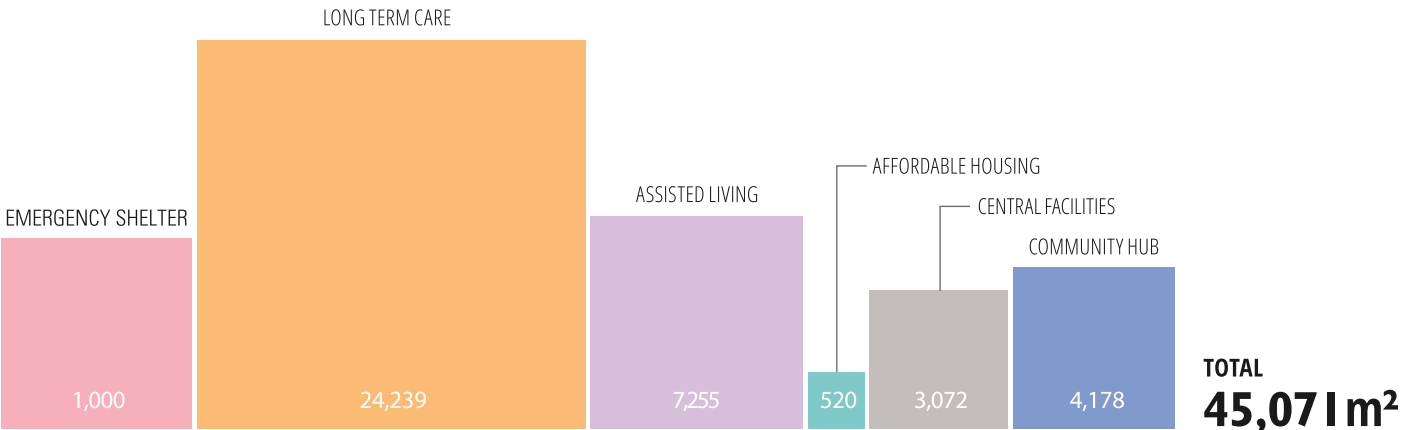
Before and after



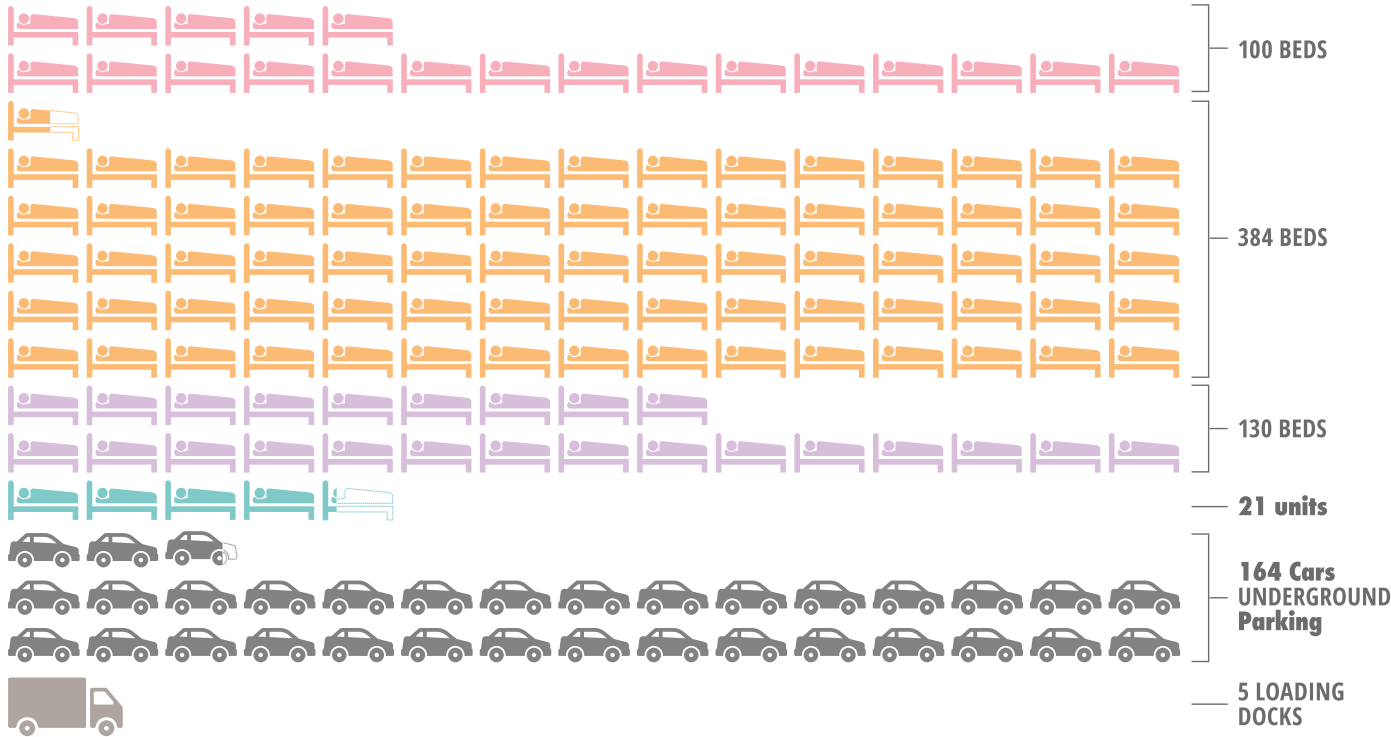
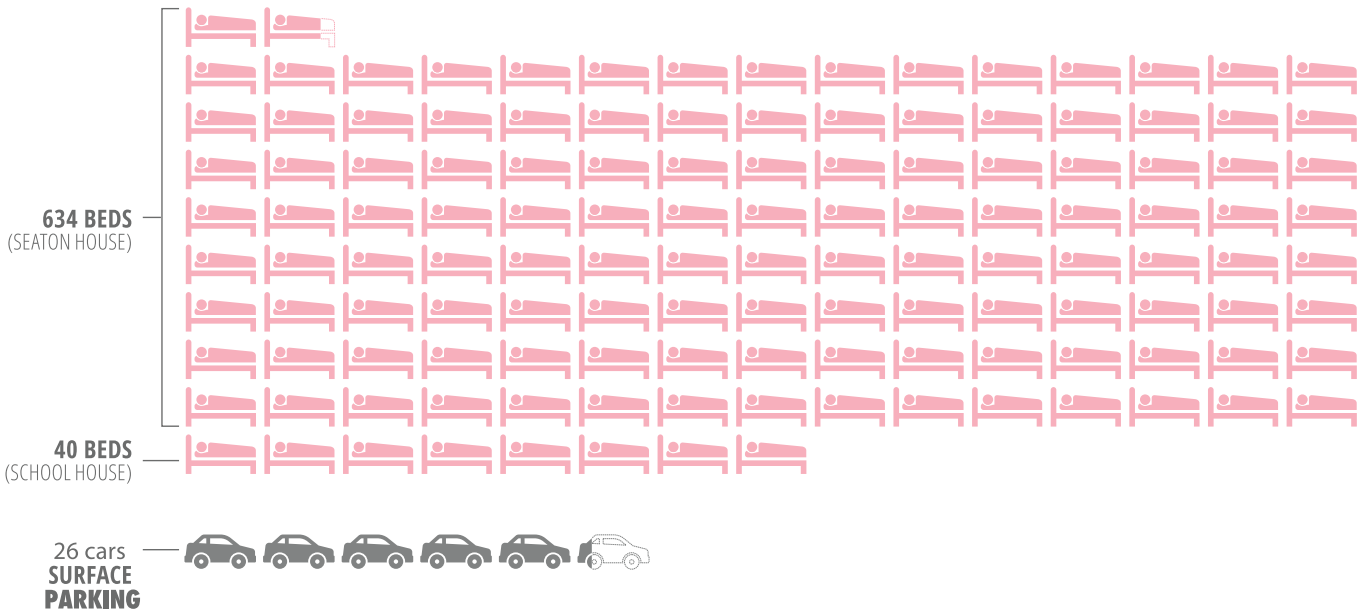
SITE AREA (m²)

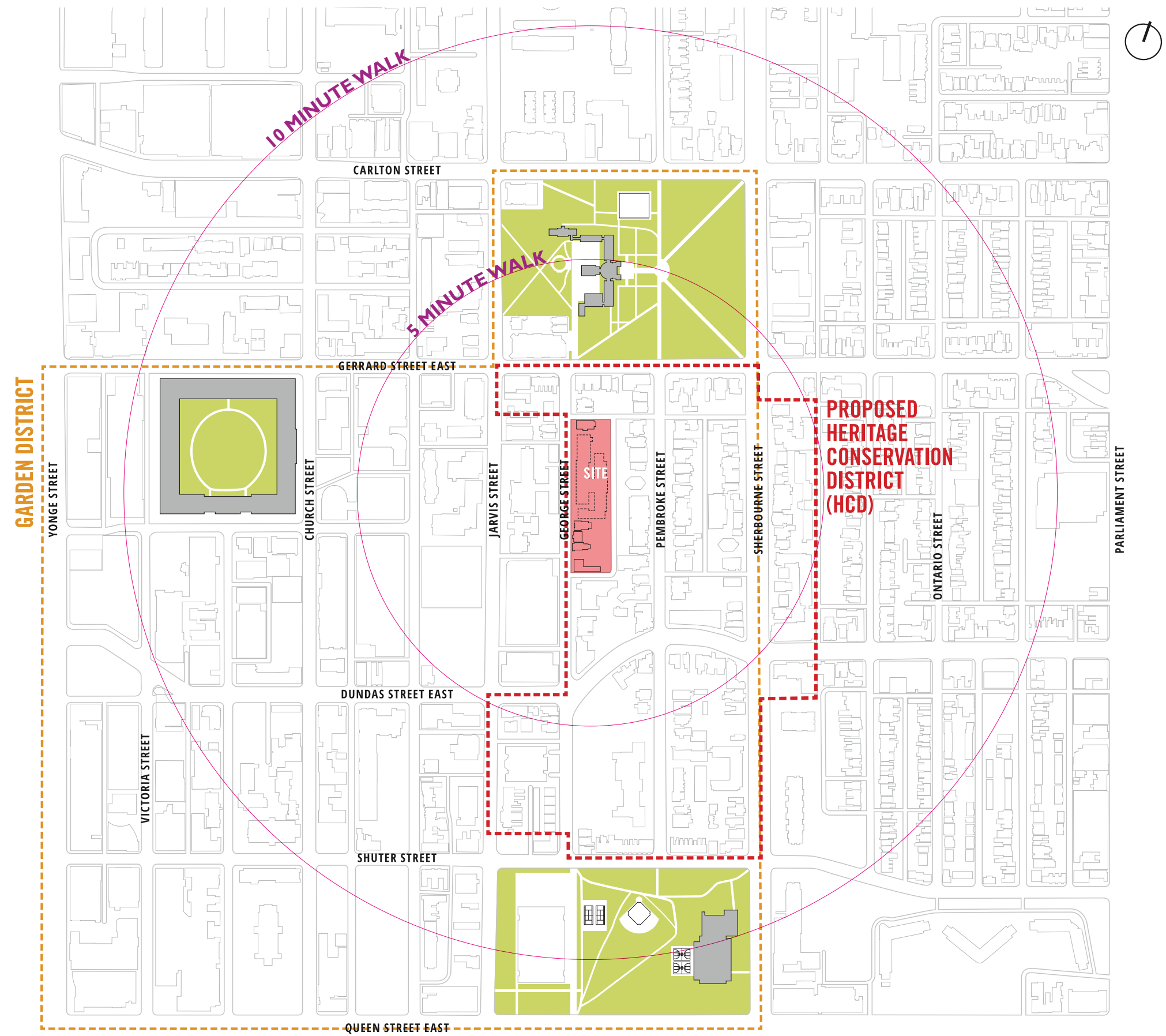


PROGRAM SPACE (m²): EXISTING



PROGRAM SPACE (m²): PROPOSED





Seaton House today



George Street looking north



*Artist's conceptions based on 33% design and subject to change

GEORGE STREET REVITALIZATION



Ground floor plan



* Artist's conceptions based on 33% design and subject to change

View from George Street, long-term care entrance and cafe terrace



*Artist's conceptions based on 33% design and subject to change

GEORGE STREET REVITALIZATION

Long-term care Great Room/Lobby



*Artist's conceptions based on 33% design and subject to change

GEORGE STREET REVITALIZATION



Shelter dining room looking south



* Artist’s conceptions based on 33% design and subject to change

Courtyard and Walled Garden



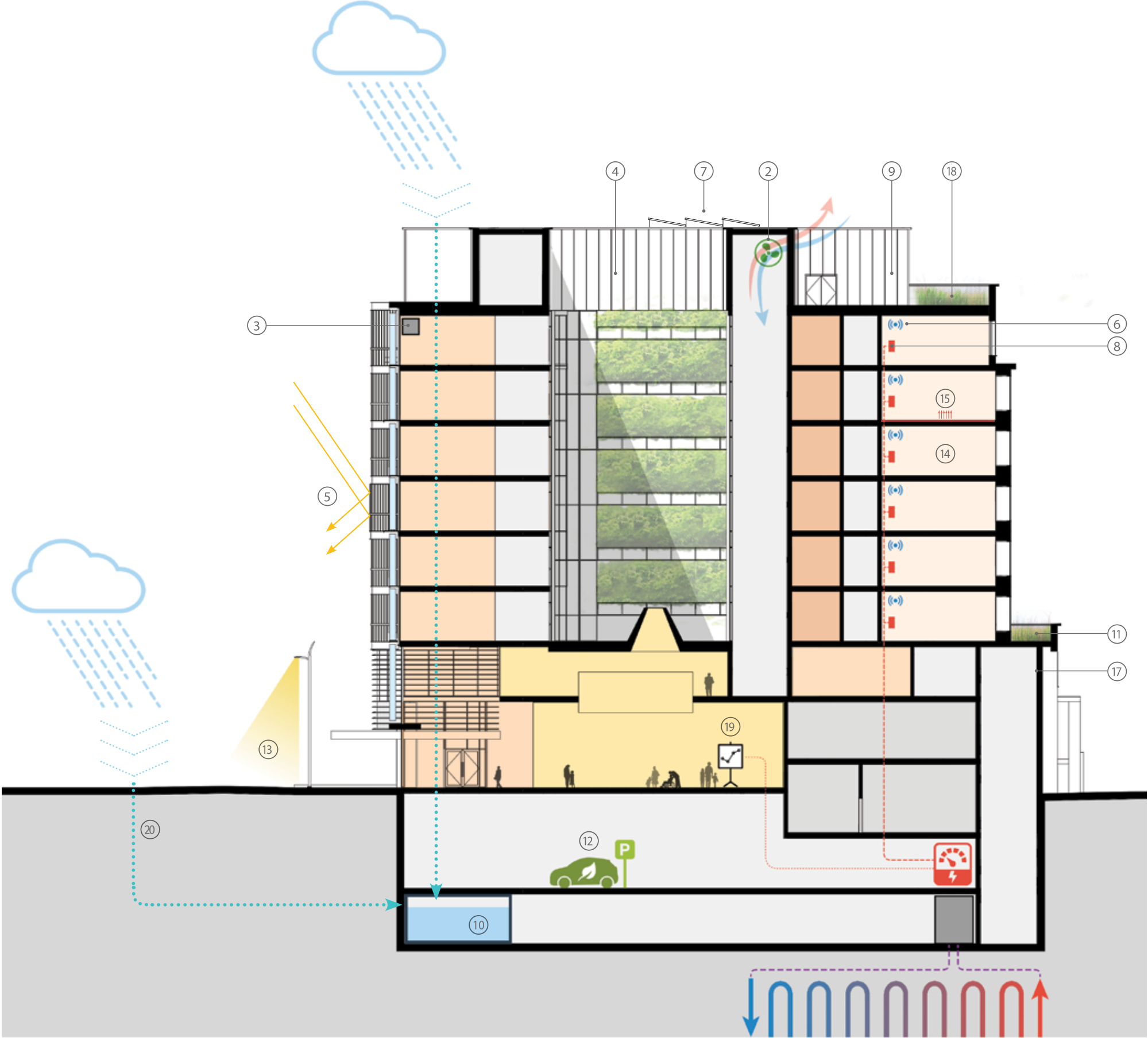
* Artist's conceptions based on 33% design and subject to change

Long-term care Living Room facing George Street



* Artist's conceptions based on 33% design and subject to change

Sustainable design strategy



LEGEND: SUSTAINABLE DESIGN STRATEGY

ENERGY & ATMOSPHERE

1. Geothermal
2. Energy Recovery Ventilators
3. VAV Boxes
4. Window Shading Device
5. Window Shading Device
6. Occupancy Sensors
7. Provision for future Photo-voltaic & Solar Hot Water
8. Energy Sub Metering
9. Enhanced Commissioning,

SUSTAINABLE SITE

10. Stormwater Reuse, Irrigation ,
(makeup water for cooling towers)
11. Green Roof
12. Preferred Parking for Low-emitting & Fuel-efficient vehicles
13. Light Pollution Reduction,

INDOOR ENVIRONMENTAL QUALITY

14. Low VOC Material (indoor air quality)
15. Perimeter in-floor Heating ,
(comfort & low temperature),

MATERIALS & RESOURCES

16. Building Reuse (heritage properties)
17. Recycled Contents & Regional Materials

INNOVATION

18. Heat Island Effect (Green Roof)
19. Green Education (Display at Hub Entrance, connected to metering),

WATER EFFICIENCY

20. Stormwater Reuse

* Artist's conceptions based on 33% design and subject to change