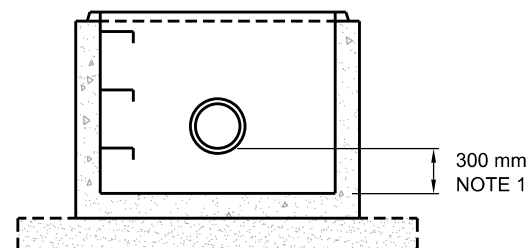


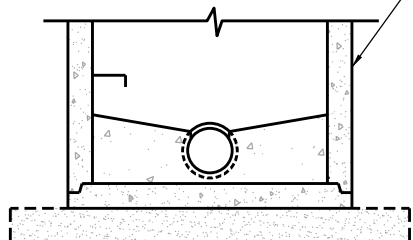
## ALTERNATIVES

### A SUMP FOR STORM SEWER MAINTENANCE HOLE

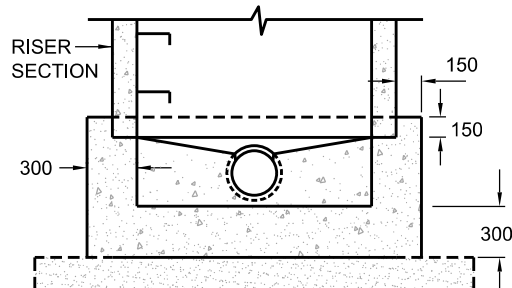


### B PRECAST SLAB BASE

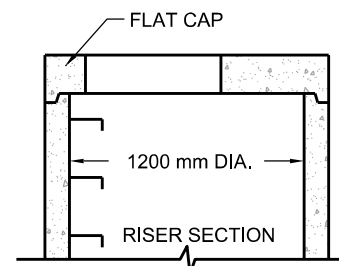
BOTTOM RISER SECTION WITH INLET AND OUTLET OPENINGS TO SUIT



### C CAST IN PLACE BASE



### D PRECAST FLAT CAP



## NOTES:

1. THE SUMP IS MEASURED FROM THE LOWEST INVERT.
2. 150 mm OF COMPACTED GRANULAR A OR UNSHRINKABLE FILL TO BE PLACED ALL AROUND THE MAINTENANCE HOLE.
3. PRECAST CONCRETE COMPONENTS ACCORDING TO OPSD 701.030, OPSD 701.031 AND OPSD 701.032.
4. STRUCTURES EXCEEDING 5.0m IN DEPTH TO INCLUDE SAFETY PLATFORM ACCORDING TO OPSD 404.020
5. PIPE SUPPORT ACCORDING TO T-708.020.
6. FOR BENCHING DETAILS, MAXIMUM PIPE HOLE DIAMETERS AND FLOW CONFIGURATIONS, SEE T-701.021.

All dimensions are in millimetres unless otherwise shown.

7. ALL DIMENSIONS ARE NOMINAL.
8. PARGING SHALL BE 1:3 MORTAR MIX.
9. WATERPROOFING OVER PARGING TO BE TWO HEAVY COATS OF BITUMEN.
10. WHERE PIPES JOIN AT MAINTENANCE HOLE, JOINTS ARE TO BE WATERTIGHT WITH THE APPROVED SEAL.
11. FIRST STEP TO BE 75 mm TO 300 mm BELOW FRAME. LAST STEP TO BE 300 mm ABOVE BENCHING OR 600mm ABOVE INVERT IF NO BENCHING.



ENGINEERING AND CONSTRUCTION SERVICES STANDARD DRAWING

## PRECAST MAINTENANCE HOLE 1200 mm DIAMETER

REV 3

APR 2014

T-701.010

NTS

SHEET 1