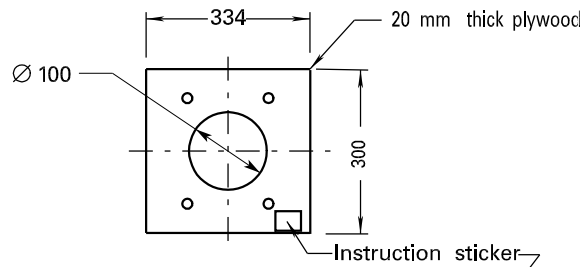


PLAN

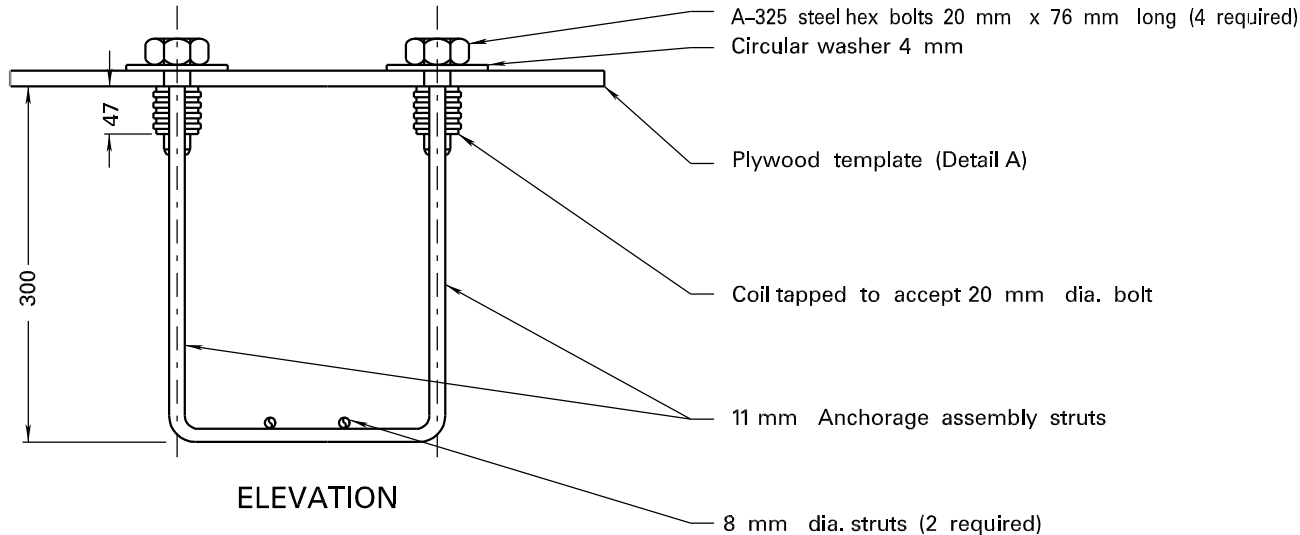
Bolt centre diameter



DETAIL A - WOOD TEMPLATE

INSTRUCTIONS:

- 1 Place wood template over form tubing.
- 2 Tie anchorage to ducts.
- 3 Adjust for level using a carpenter's level several ways on the template.
- 4 Secure in the level position prior to pouring concrete to the top of the formwork.
- 5 Remove wood template and finish concrete on top of footing as soon as concrete has an initial set. Replace template and place bolts fully to threaded ferrules (hand tight).



ELEVATION

NOTES

1. No portion of anchor assembly shall be cut or removed before concrete pour.
 2. Entire assembly including bolts and washers to be hot dip galvanized to CAN/CSA-G164-M92.
 3. Studs to be Hi-Tensile Material
 4. Studs are imperial thread
- Dimensions are in millimetres or metres, unless otherwise shown.