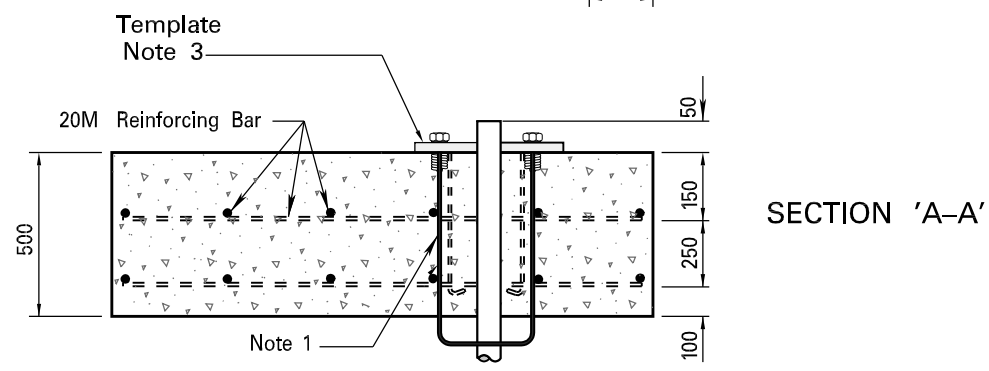


PLAN



NOTES

1. For anchor assembly, see drawing standards TTD 807.015, TTD 807.016 and TTD 807.020. For base mounting details, see drawing standards TTD 805.001 and TTD 809.001.
 2. For number of Ducts and diameter installed in base, see layout drawings.
 3. Anchor assembly to be set with aid of template (supplied with anchor).
 4. Installation of handwell as per layout drawing.
- Dimensions are in millimetres or metres, unless otherwise shown.



ANCHOR ASSEMBLY IN REINFORCED SIDEWALK BAY

SCALE
NOT TO SCALE
REVISION DATE
JANUARY, 2012

Traffic Plant Installation and Maintenance

APPROVED BY:
--

DRAWN BY:
P. B.

PLAN No.
807.010