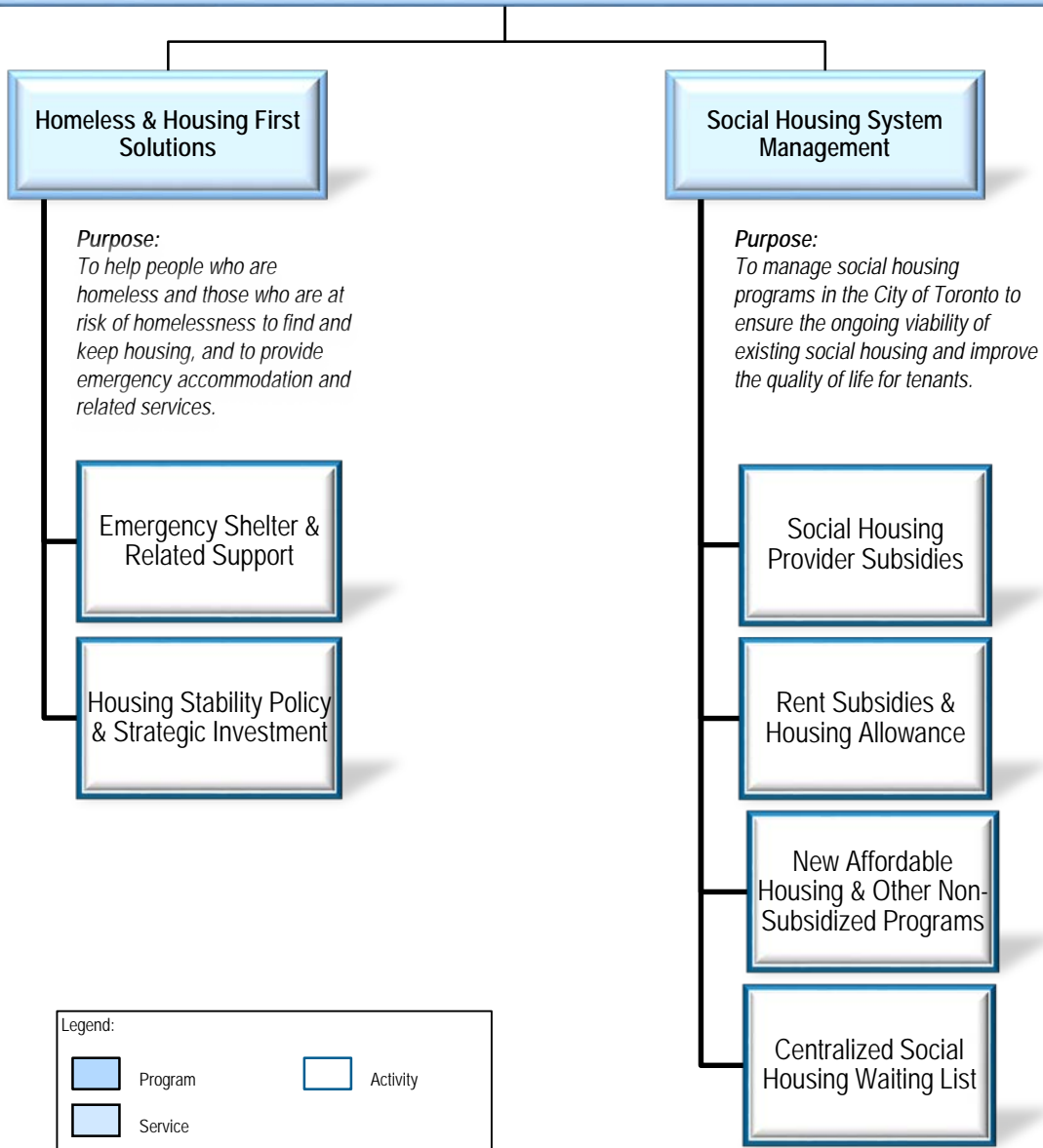


# Shelter Support and Housing Administration

*To ensure that homeless people and people at risk of homelessness have a range of shelter and affordable housing options. Provide temporary shelter and support for homeless individuals and families while assisting them to achieve permanent housing solutions.*



## Service Customer

### Homeless & Home First Solutions

- Homeless persons
- At-risk persons

#### Indirect (Beneficial)

- Residents
- Community Agencies (Tenant Associations, Not for Profit Groups)
- Provincial & Federal Governments

### Social Housing System Management

- Social Housing Tenants / Members

#### Indirect (Beneficial)

- Residents
- Social Housing Owners
- Provincial & Federal Governments