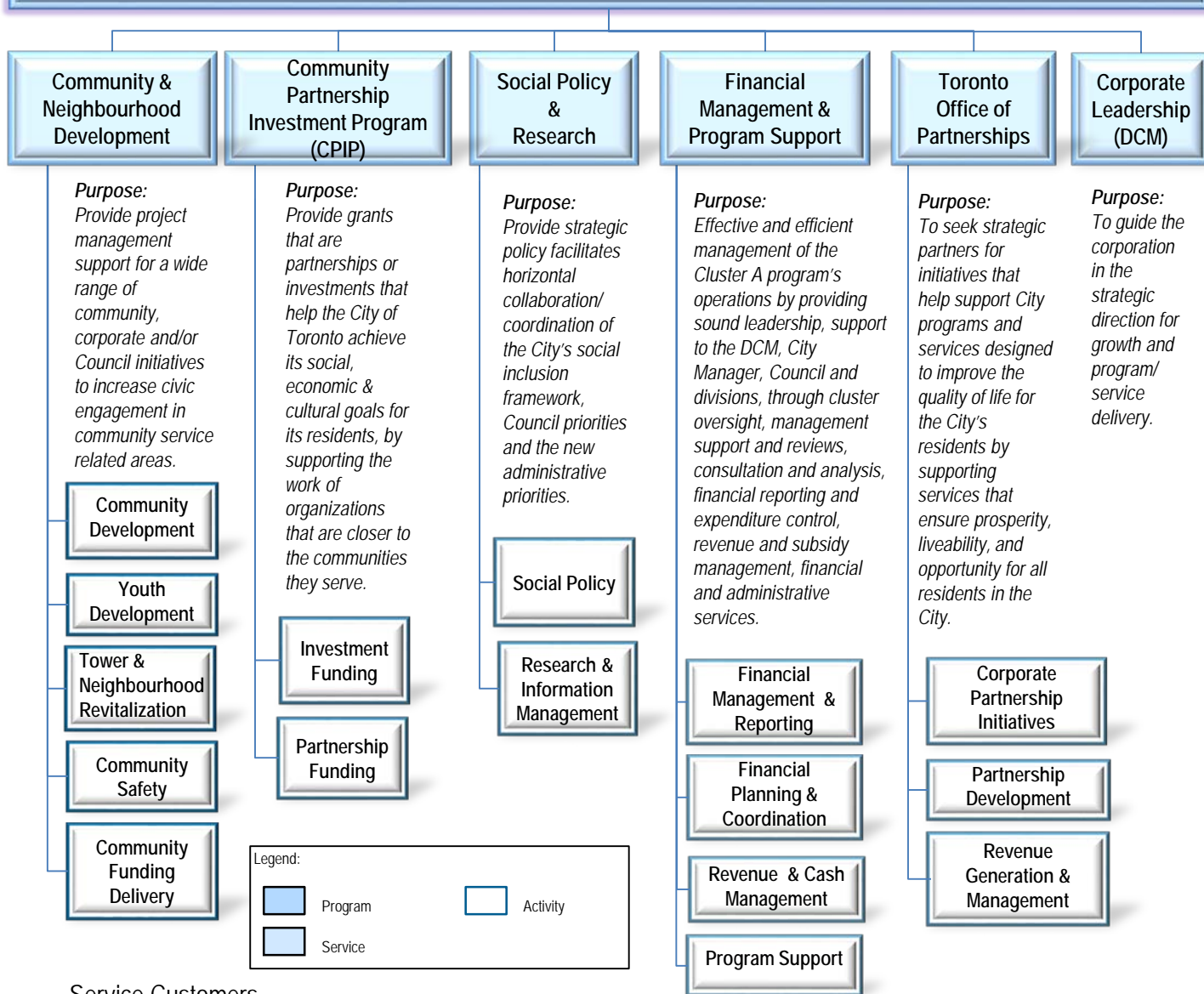


Social Development, Finance and Administration

The Program provides leadership on the City's social inclusion and community safety agenda of building safe, strong neighbourhoods and communities. Through internal, inter-governmental and community partnerships, the Program leads integrated service planning and delivery, and responds to other community social needs through social policy research and analysis, to improve individual and neighbourhood outcomes. The Division provides financial and program support and oversight, to operating programs to ensure Cluster A objectives are met.



Service Customers

Community & Neighbourhood Development

- City Divisions/Agencies
- Community Service Providers/ Groups
- Members of Council
- Neighbourhoods
- Families • Residents
- Youth • Employers
- Other orders of Government/ Funding Sources

Social Policy & Research

- Mayor/Council
- Deputy City Manager
- City Manager
- Cluster A Divisions
- ABCs
- Communities/ public

Financial Management & Program Support

- City Manager
- Deputy City Manager
- Corporation
- Cluster A Programs & Divisions;
- Taxpayer/Public

Toronto Office of Partnerships

- Other orders of government
- Non Government Organizations
- Charitable Organizations
- Philanthropists
- Communities
- Priority Neighbourhoods

Corporate Leadership

- Affordable Housing Office
- Toronto Office of Partnerships
- Toronto Employment & Social Services
- Children's Services
- Long-Term Care Homes & Services
- Court Services
- Parks, Forestry, & Recreation
- Economic Development & Culture
- Shelter, Support & Housing Administration
- Toronto Paramedic Services
- Social Development, Finance, & Administration
- Public Health