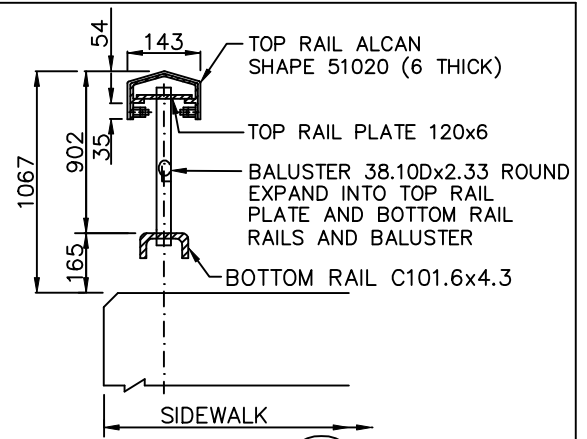
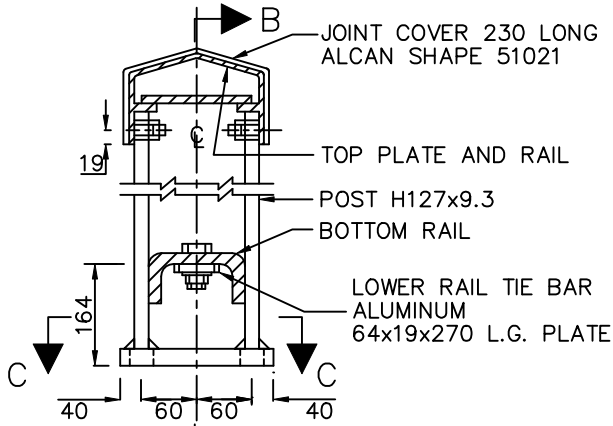


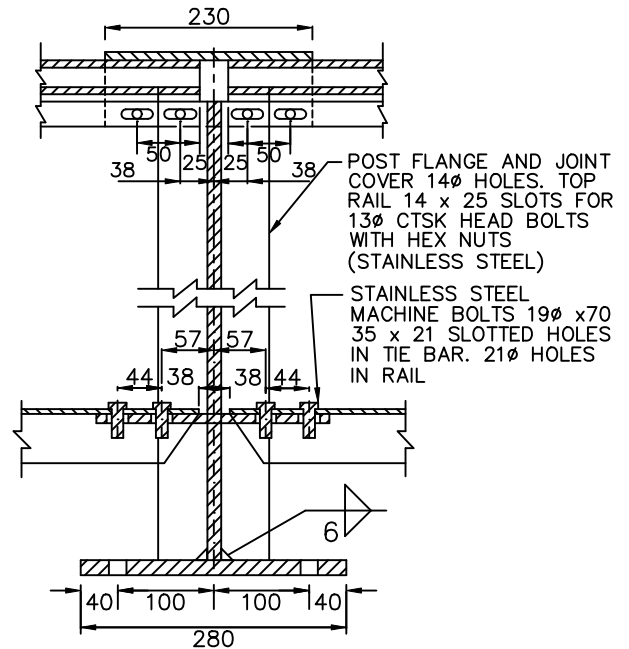
PANEL ELEVATION



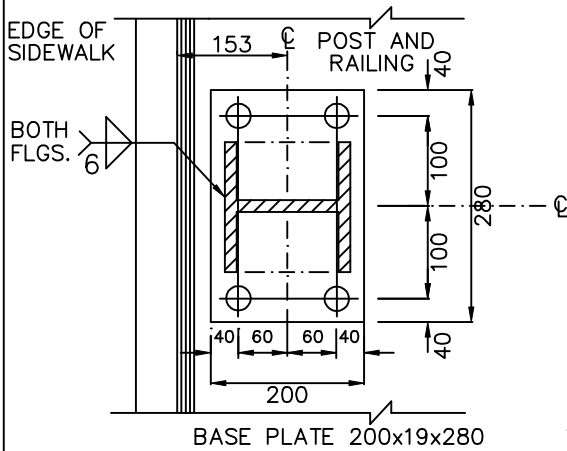
SECTION A



POST DETAIL



SECTION B



SECTION C

NOTES

1. AN APPROVED PREFABRICATED ANCHORAGE ASSEMBLY SHALL BE USED.
2. PAINT BOTTOM OF BASE PLATE WITH ASPHALTIC MASTIC.
3. POST AND BALUSTERS TO BE VERTICAL. TOP AND BOTTOM RAILS TO BE PARALLEL TO TOP OF CONCRETE.

MATERIAL

ALUMINUM - EXTRUDED SHAPES
 ALUMINUM - TUBING
 ALUMINUM - SHEET AND PLATE
 STAINLESS STEEL TYPE 304

USE

POST AND RAILS
 BALUSTERS
 TOP BASE AND TIE PLATES
 BOLTS AND SET SCREWS
 NUTS AND WASHERS

SPECIFICATION

C.S.A.- HA 5 GS11R-T6
 C.S.A.- HA 7 GS11R-T6
 C.S.A.- HA 4 GM41-H321
 A.S.T.M.- A314-63

METRIC
 ALL DIMENSIONS SHOWN HERE ARE IN MILLIMETRES UNLESS OTHERWISE NOTED

APPROVED BY

 TOM DENES, P. ENG.
 EXECUTIVE DIRECTOR TECHNICAL SERVICES

SCALE
 N.T.S.

DATE: JUNE, 2001

REVISED:

STANDARD No.

T-900.01-3



STANDARD ALUMINUM RAILING FOR
 SIDEWALKS AND WALLS WITHOUT CONCRETE PARAPETS