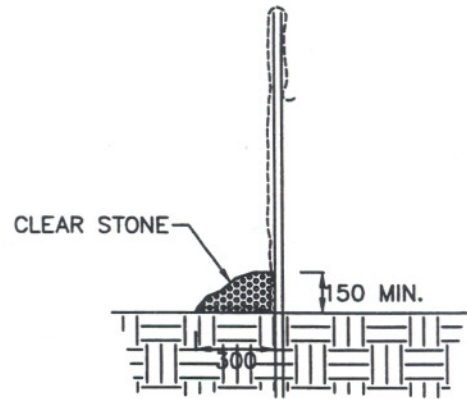
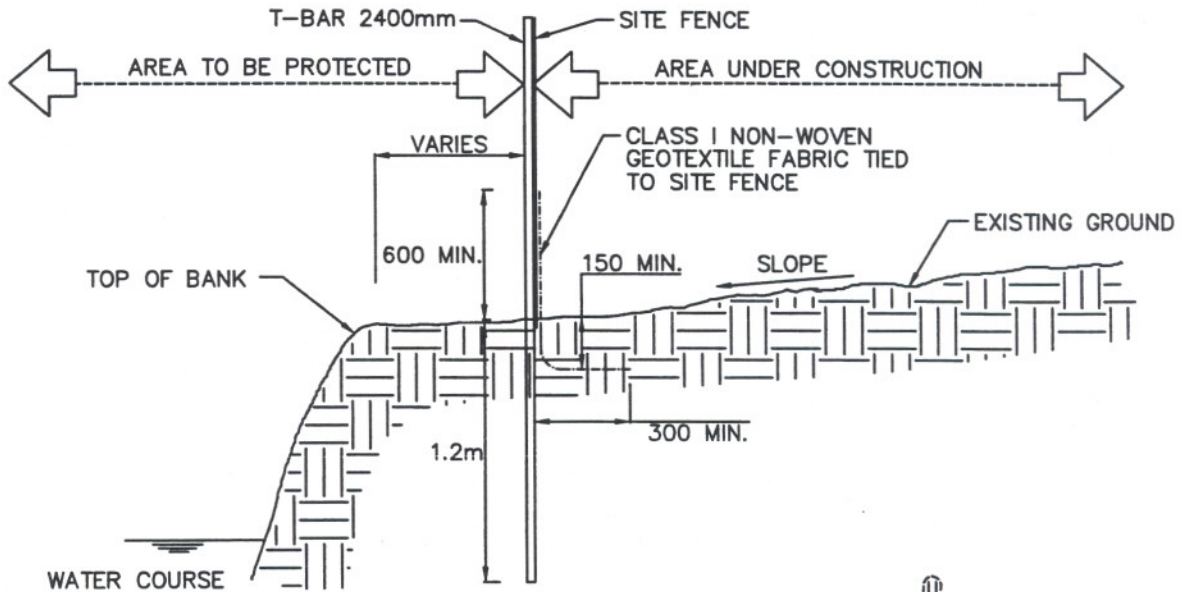


SILT FENCE INSTALLATION WORK SHALL AVOID THE DESTRUCTION OF EXISTING WOODY VEGETATION (IE. SHRUBS AND TREES) OTHER THAN THOSE SPECIES WHICH HAVE BEEN APPROVED FOR REMOVAL



FROZEN CONDITION

NOTE

1. MATERIALS REMOVED FROM TRENCH SHALL BE REPLACED ON TOP OF FILTER CLOTH.
2. FILTER CLOTH SHALL BE HORIZONTALLY OVERLAPPED 500mm

METRIC
ALL DIMENSIONS SHOWN HERE ARE IN MILLIMETERS UNLESS OTHERWISE NOTED

APPROVED BY
Tom Denes
TOM DENES, P. ENG.
EXECUTIVE DIRECTOR TECHNICAL SERVICES

SCALE
N.T.S.

DATE: JUNE, 2001

REVISED:

STANDARD No.

T-219.130-1

SEDIMENT CONTROL FENCE

