

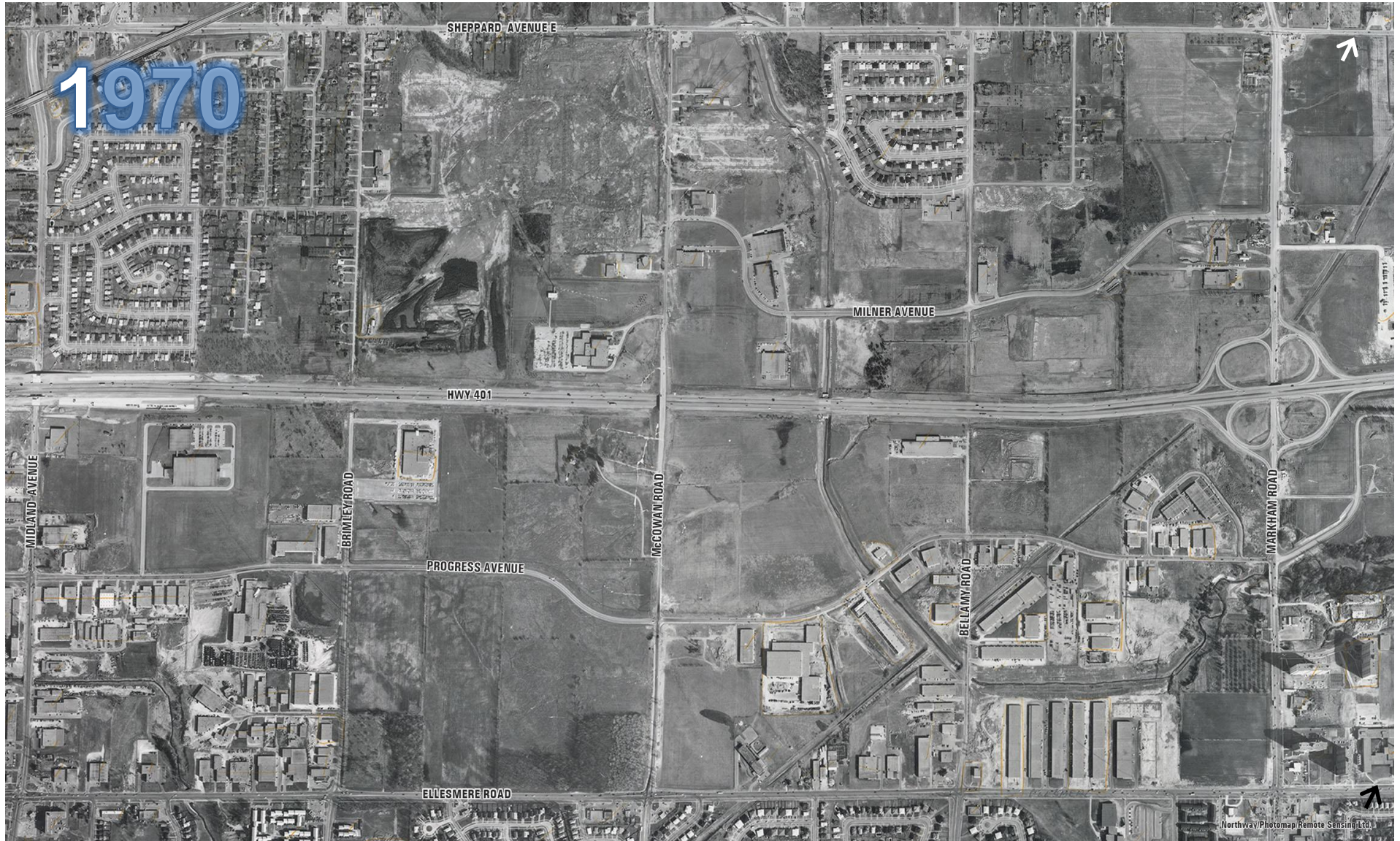
A light blue line-art map of the Scarborough area, showing a network of roads and transit lines. The map is composed of various geometric shapes and lines, creating a stylized representation of the region's infrastructure.

SCARBOROUGH CENTRE

TRANSPORTATION MASTER PLAN (SCTMP)

Public Consultation Meeting #3
November 22, 2017

Growth of Scarborough Centre



Growth of Scarborough Centre



Growth of Scarborough Centre



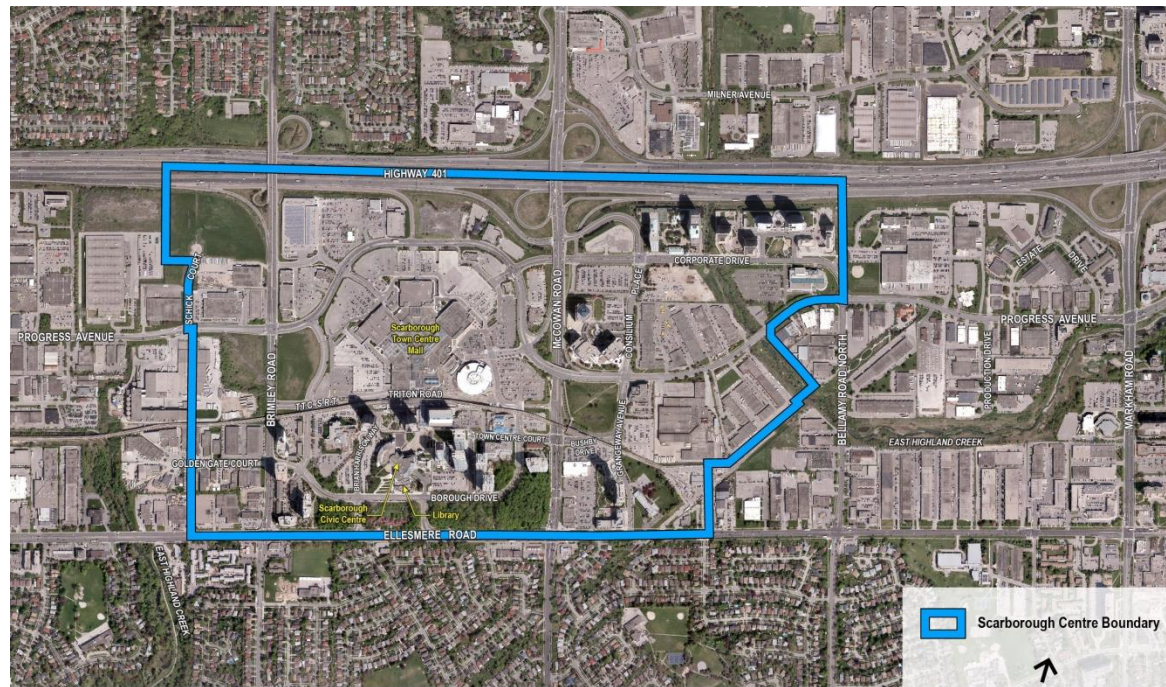
Scarborough Centre Today

Existing

- 545 Businesses
- **16,400 Jobs**
- 6,700 Residential Units
- **14,500 Residents**

Approved & Under Review

- **5,500+** Approved Residential Units
- **800+** Proposed Residential Units



Transportation Master Plan

Purpose & Process

Study Purpose

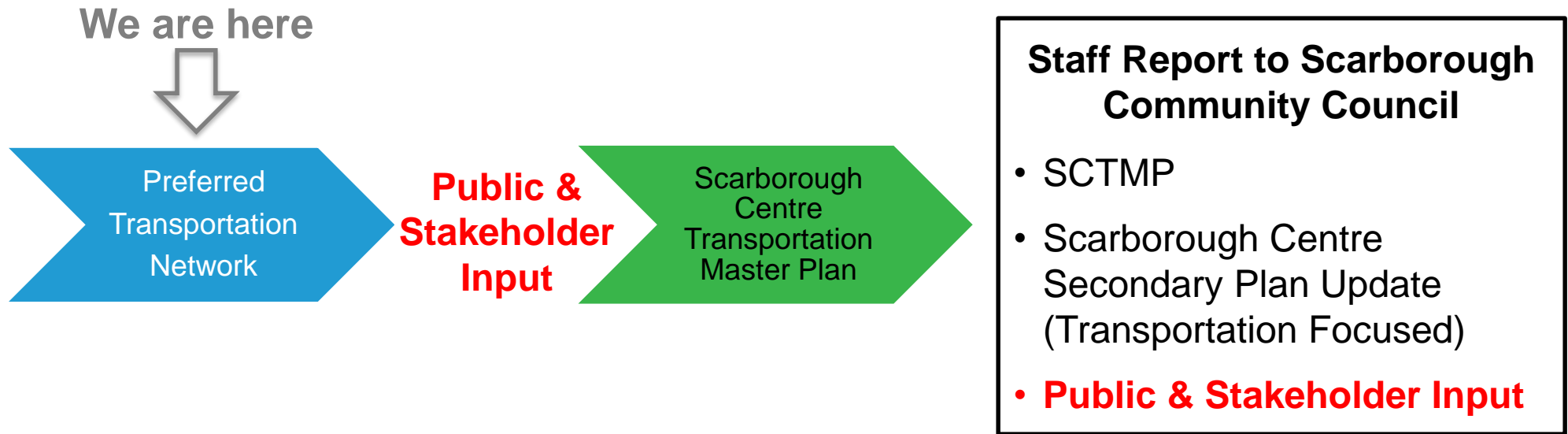
- To provide a **framework and direction for a multi-modal transportation network** and infrastructure phasing/improvement strategy for Scarborough Centre and the surrounding area

Study Process



- Study commenced Summer 2016
- 3 Public Meetings (November 2016, May 2017 & Tonight)
- 3 Local Advisory Committee Meetings
- Toronto Planning Review Panel, Design Review Panel & various other stakeholder engagement events
- Study completion late 2017

Transportation Master Plan Process & Next Steps



Further Opportunities for Public Input

- Public Meeting # 3 (Tonight)
- Draft SCTMP Document (December 2017/January 2018)
- Final SCTMP Document & Scarborough Centre Secondary Plan Update (to follow)

What We've Heard

Here is what we've heard from the community so far:

Improve pedestrian experience

Create a simplified grid street network and at-grade intersections

Enhance highway interchanges for all users

Reduce/improve transfers between transit routes

Improve safety and accessibility

Green Scarborough Centre

Encourage safety through dedicated cycling facilities and parking

Improve connectivity to the many amenities and assets of Scarborough Centre

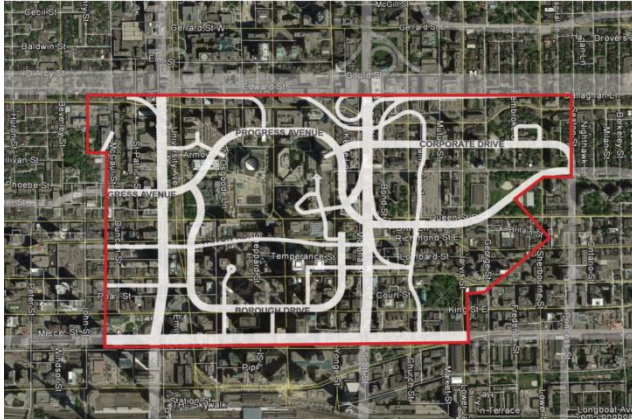
Enhance wayfinding and create a sense of place

Provide improved transportation choices

Develop a Transportation network that accommodates all users and allows for efficient goods movement

Provide a higher quality public realm

Scarborough Centre Today Constraints



Coarse street network with large blocks and single-use buildings



Lack of connections throughout the Centre



No sense of place in the Centre



Harsh, unpleasant, and fragmented pedestrian environment



Auto-oriented, irregular intersections, ramps, channelized turning lanes, grade separations



Highway 401 and its interchanges are barriers to pedestrians and cyclists

Scarborough Centre Today Opportunities



Public realm



Pedestrian Safety



Transit-oriented development

LINE 2 SUBWAY
SCARBOROUGH



 **METROLINX**

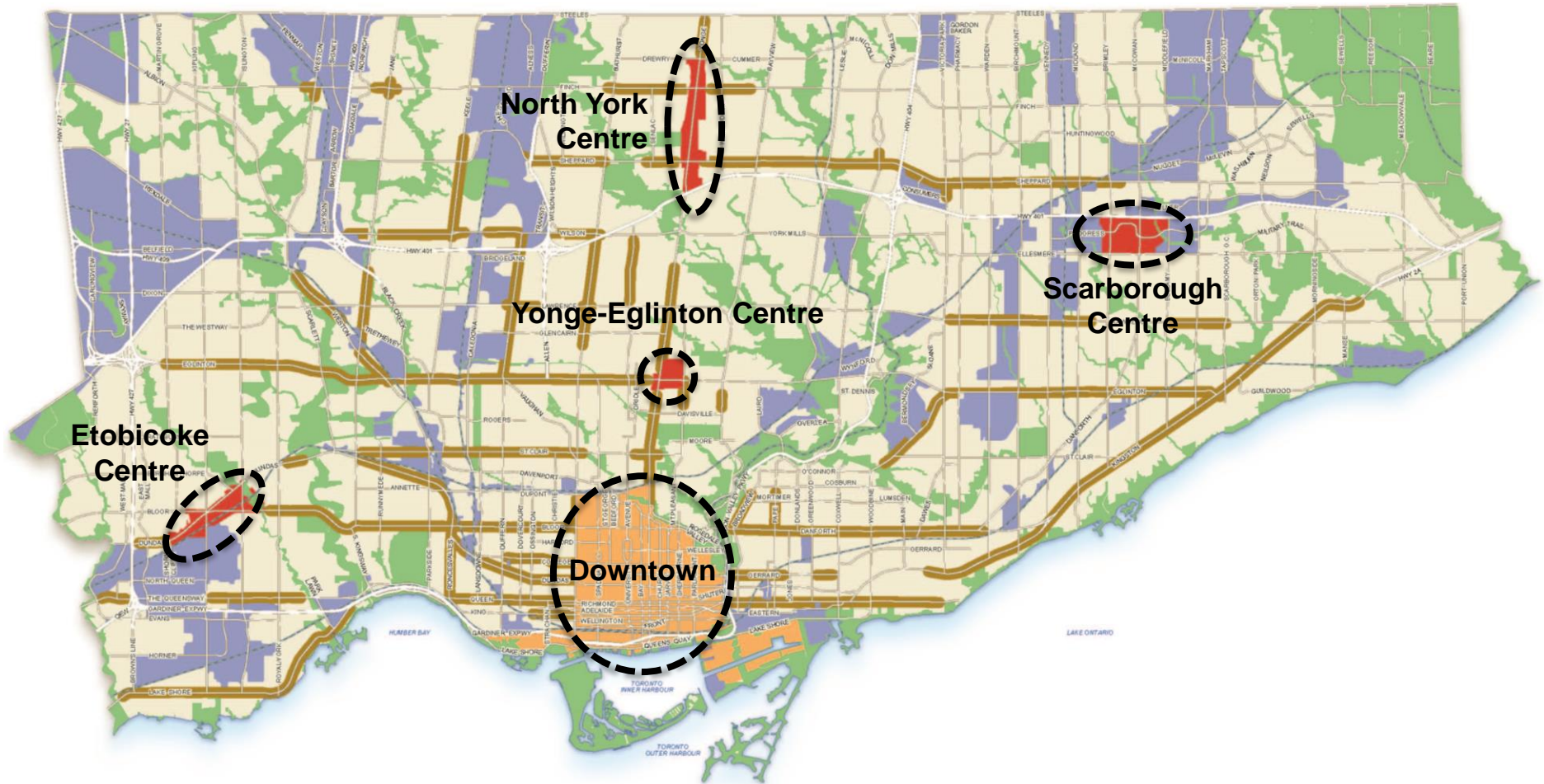
 

Leverage other public & private initiatives



Wayfinding

Official Plan – Urban Structure



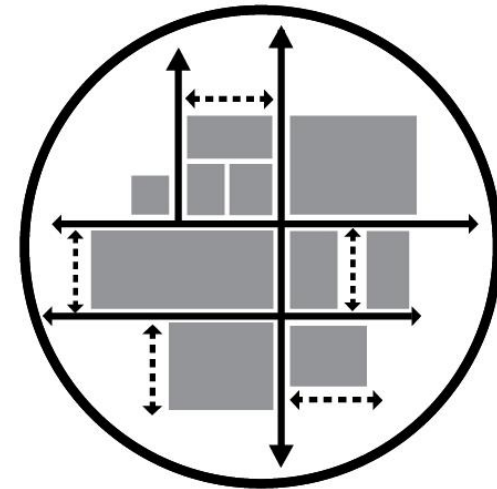
Scarborough Centre In The Future

Key Objectives

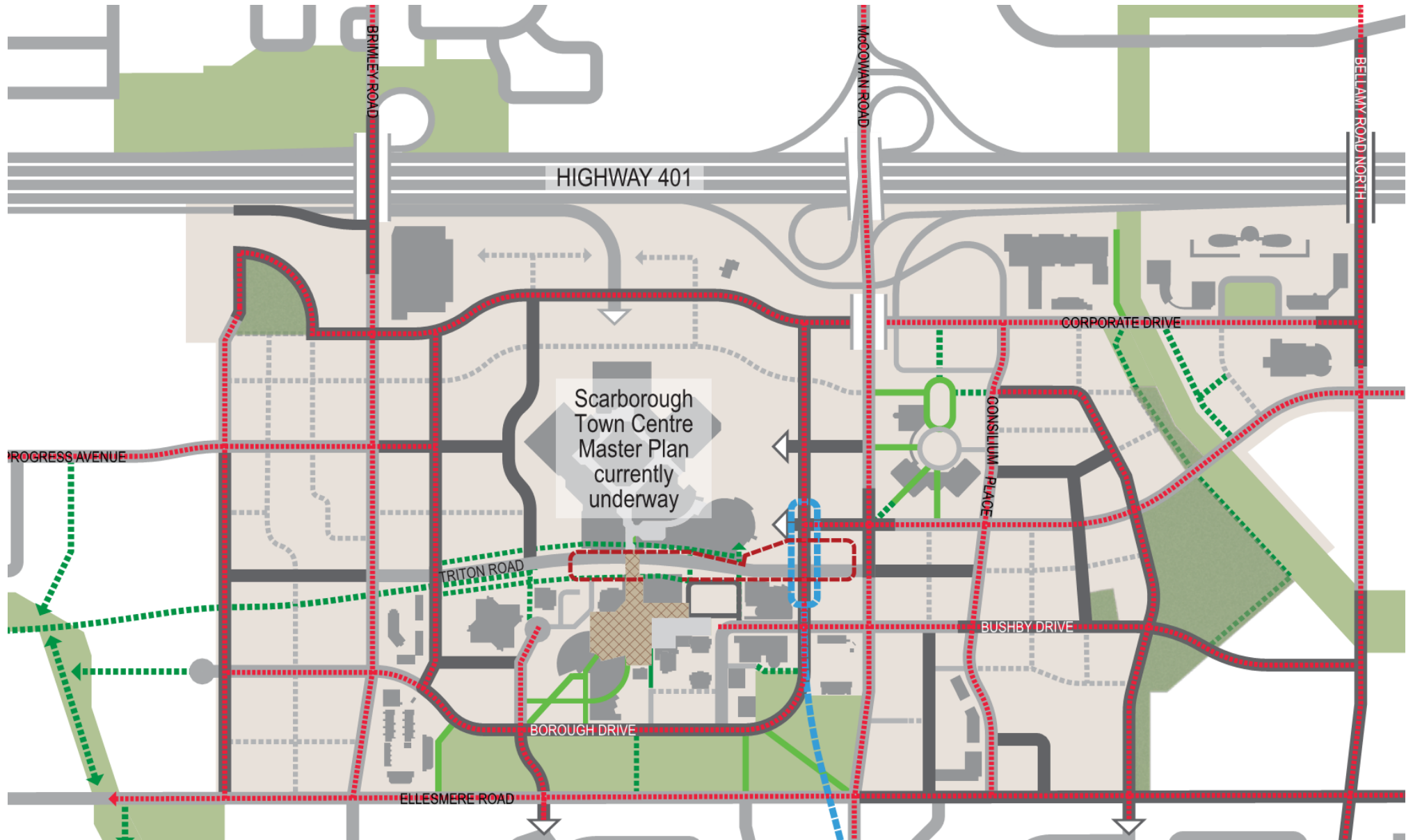
- Establish a **vibrant urban area**
- Improve **connectivity**
- Build a **high quality public realm**
- Develop a **fine grained street and block pattern**
- Establish a **destination** accessible by **all modes of transportation**



Source: REimagining Yonge Street EA



Preferred Network



Encourage Active Modes of Transportation



Encourage Active Modes of Transportation

WHY?



Health



Prosperity



Environment

Encourage Active Modes of Transportation

HOW?



Bike & walking streets

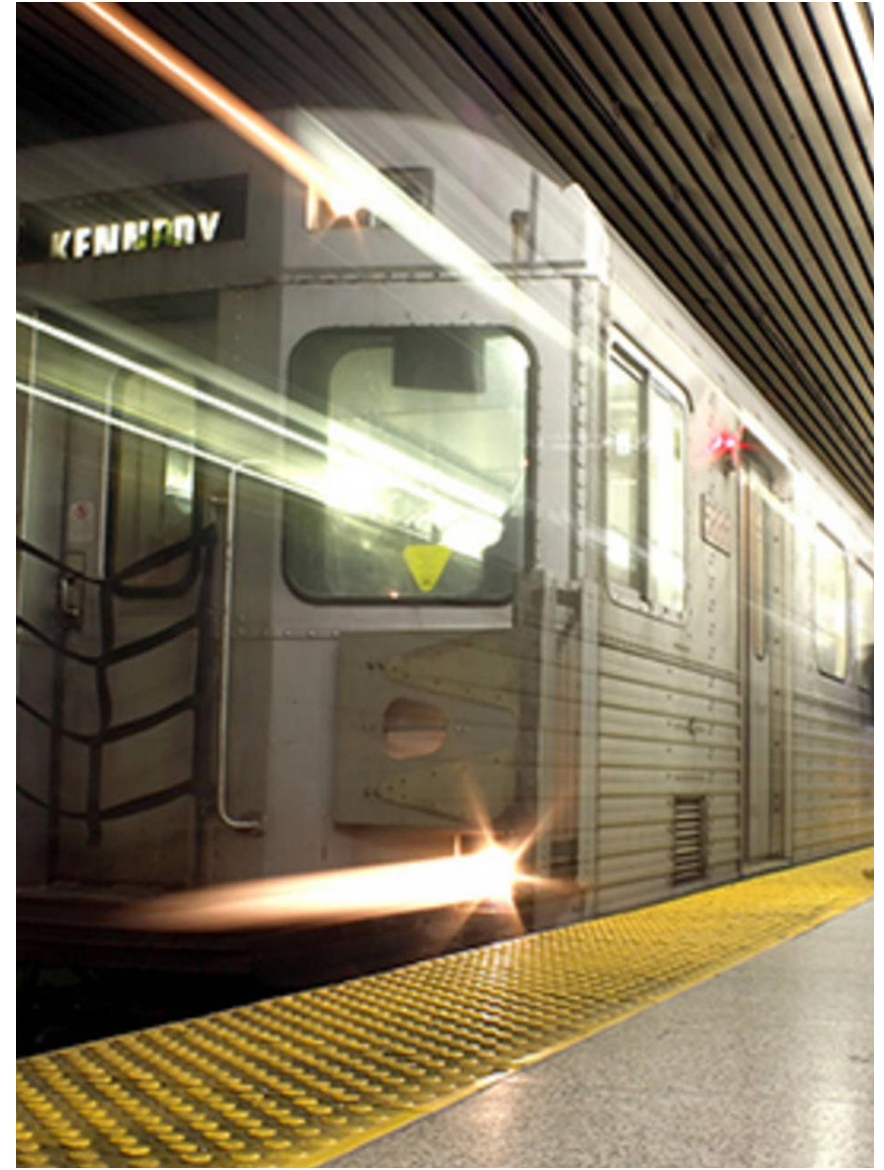


Separated cycling facilities & slow streets



Pedestrian scale wayfinding

Support Transit & Innovative Mobility Solutions

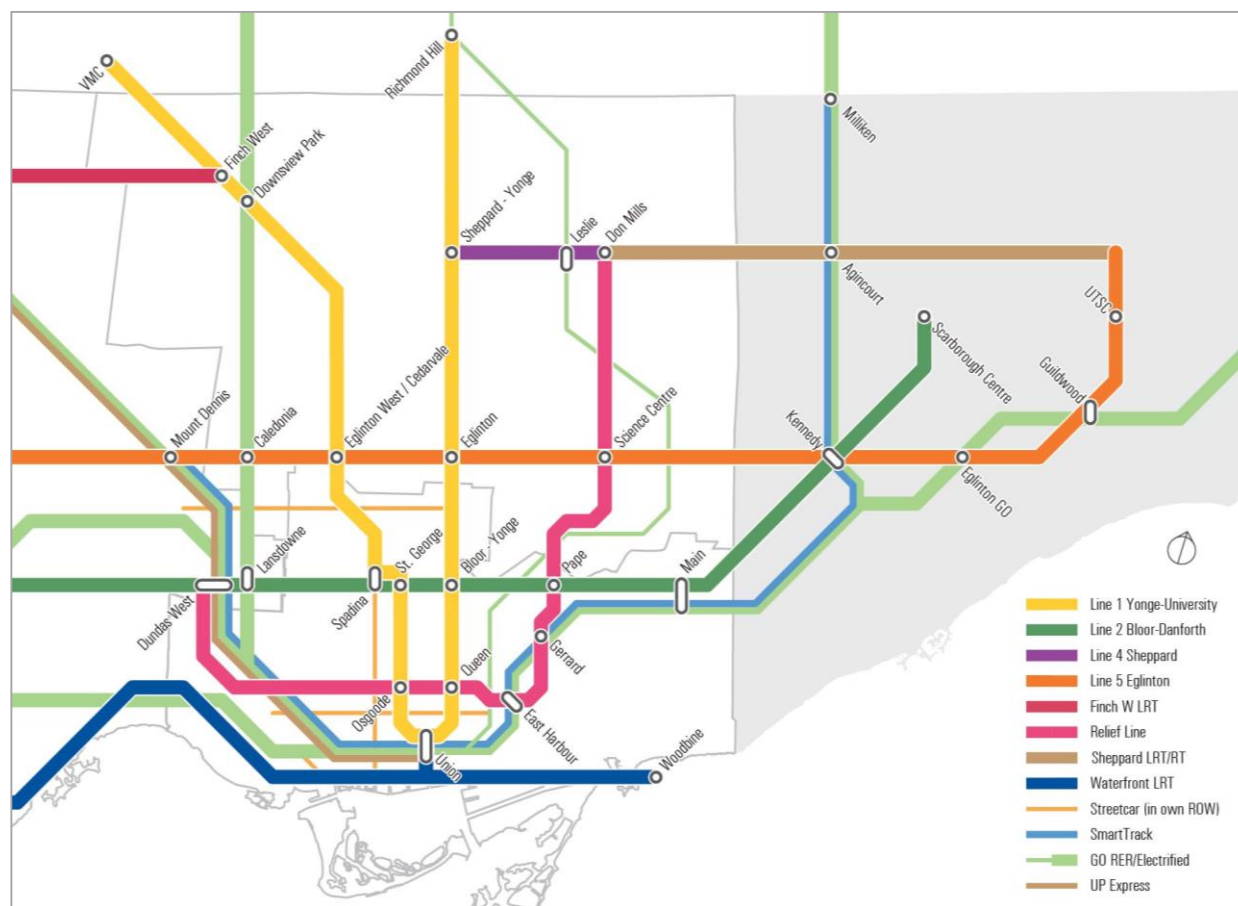


Support Transit & Innovative Mobility Solutions

WHY?



Choice



Connections

Support Transit & Innovative Mobility Solutions

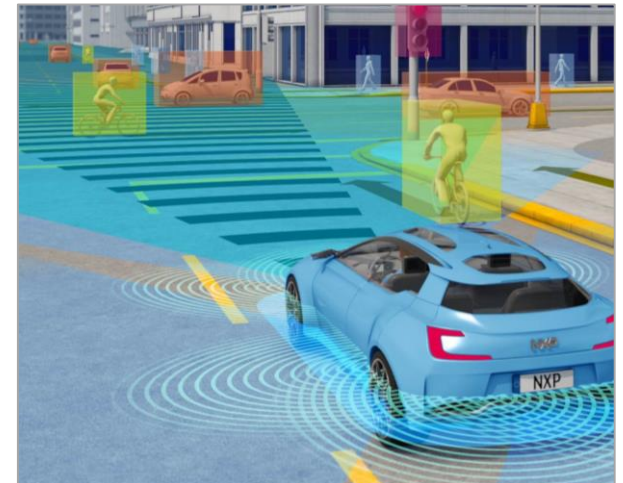
HOW?



Transit
Investment



Multi-Modal
Connections



Innovative
Solutions

Reduce Single Occupant Vehicles



Reduce Single Occupant Vehicles

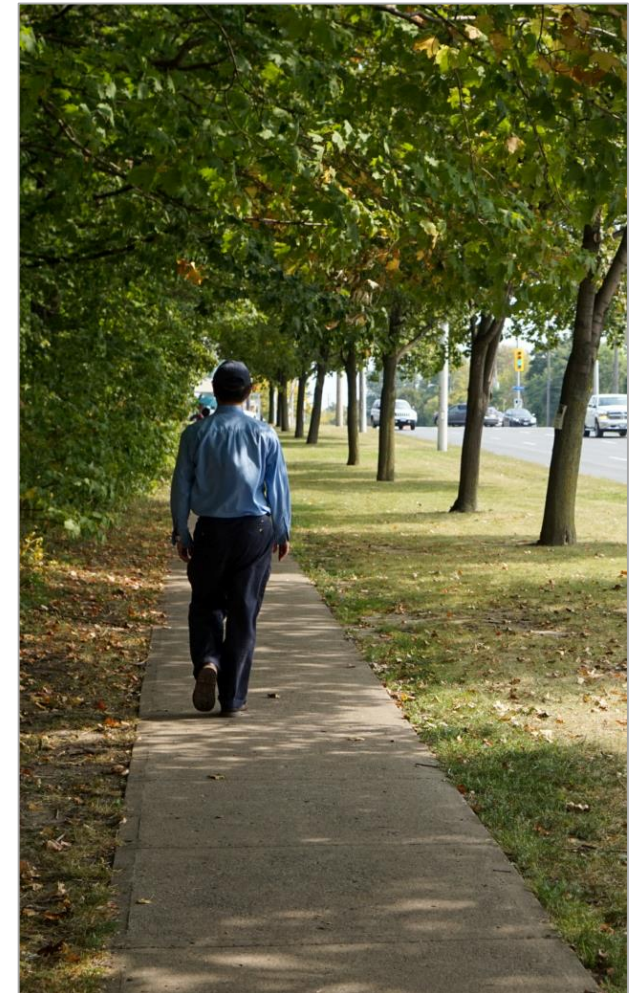
WHY?



Congestion



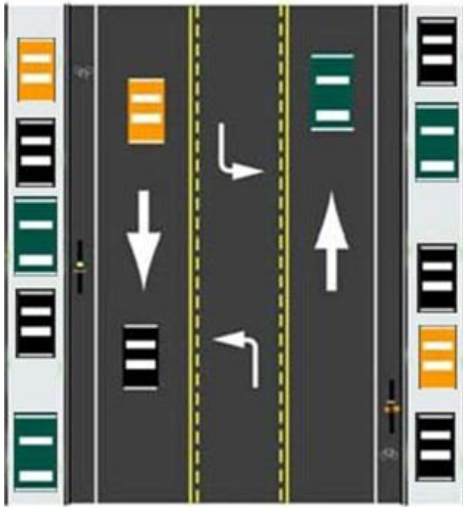
Moving People,
Not Vehicles



Public Realm
Improvements

Reduce Single Occupant Vehicles

HOW?



Street
Redesign



Parking
Management



Bike Share &
Car Share

Integrate Land Use & Transportation Planning

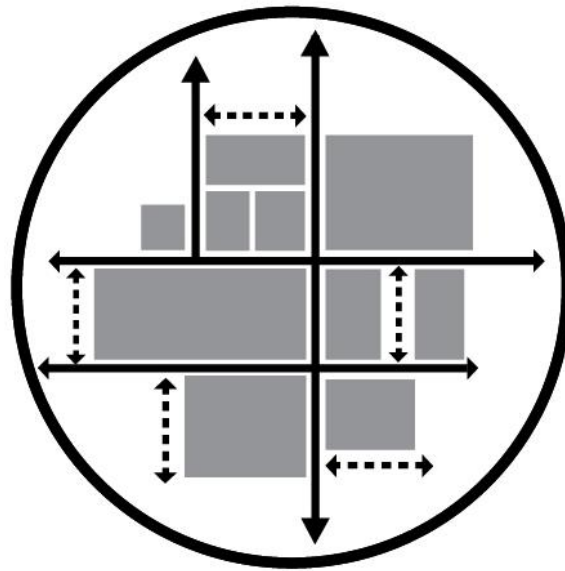


Integrate Land Use & Transportation Planning

WHY?



Quality of Life



Accessibility



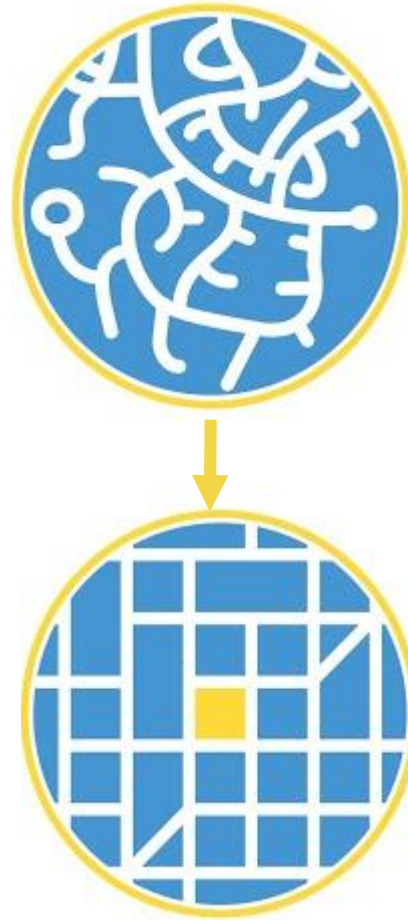
Compact & Mixed Use

Integrate Land Use & Transportation Planning

HOW?



Transit-Oriented
Development



Simplified Grid



Complete Streets

Provide Input & Stay Informed



sconthemove@toronto.ca



facebook.com/SContheMove



@CityPlanTO #sconthemove



www.toronto.ca/sconthemove