

Assembly Hall

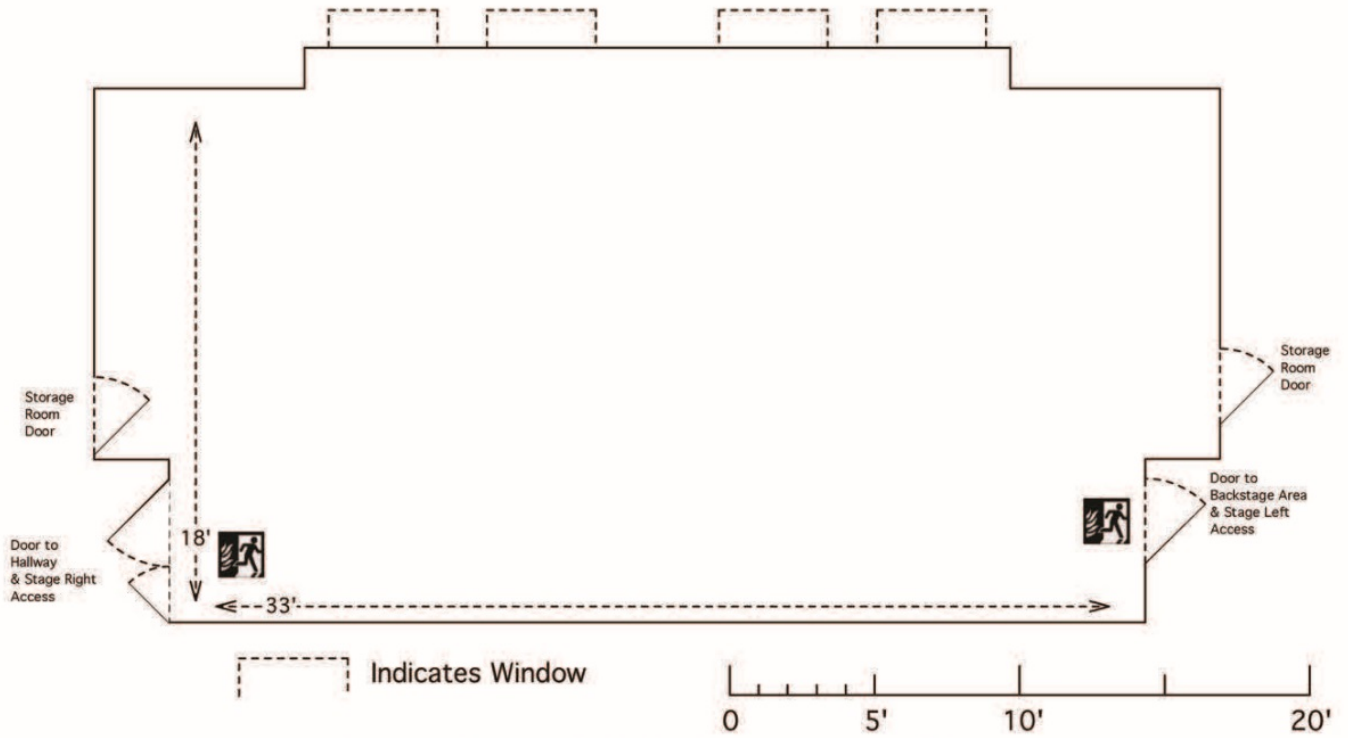
North Room Floor Plan

CLIENT/EVENT: _____ DATE: _____



**DO NOT BLOCK ANY
FIRE EXIT DOORS**

The Assembly Hall
North Room Floor Plan



Please see the attached Floor Plan Information sheet.

Return to the Assembly Hall at least 2 weeks prior to your event. FAX: 416-338-7259