

FINCH HYDRO CORRIDOR TRAIL PROJECT

Pharmacy Avenue to Birchmount Road

January 29th, 2018
L'Amoreaux Community Centre
(2000 McNicoll Avenue)



Purpose of Drop In Event

The purpose of today's drop-in event is to present background information, design features and the proposed construction timeline of a new multi-use trail between Pharmacy Avenue and Birchmount Road

We Want Your Input

- We invite you to discuss your comments, support, questions or concerns with City staff and project team at this meeting, so we can record and consider your input
- We also invite you to fill out a comment form so we may consider all input, including verbal and written

Multi-Use Trails

- The City of Toronto has over 300 km of major multi-use trails
- Together with the city's parks and open spaces, sidewalks and on-street bicycle facilities, multi-use trails provide a network of active transportation and recreation choices for Toronto's residents and visitors
- This trail is one of a number of trail projects in our Cycling Network Plan, that are being considered around Toronto to help make green spaces more accessible to residents
- Improved access to trails can encourage people to participate in healthy activities and make our city a better place to live, work and play

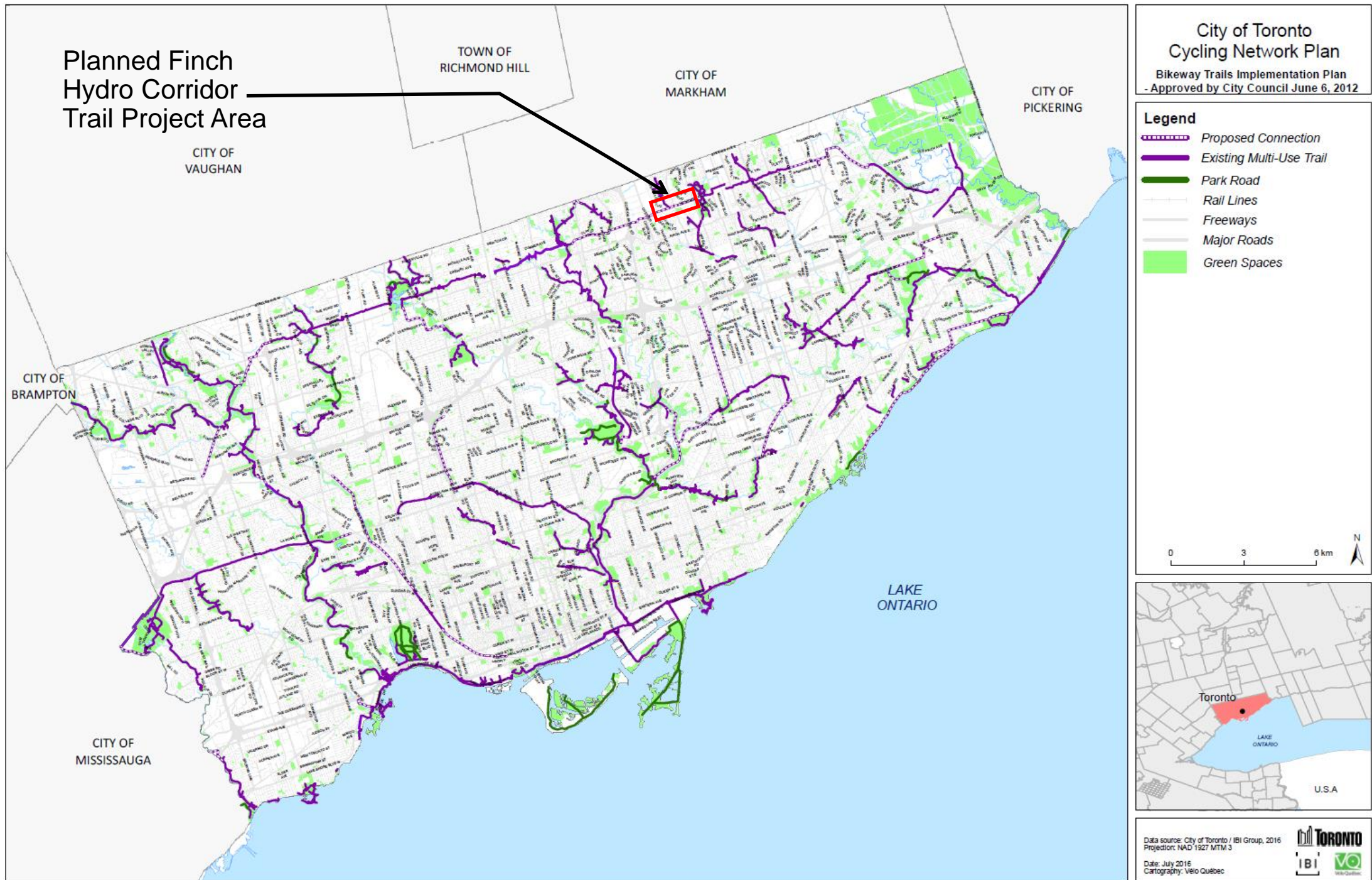


Waterfront Trail at Marie Curtis Park



Finch Hydro Corridor Trail – West of Alness Street, North York

Existing and Proposed Multi-use Trails in Toronto



Multi-Use Trail Benefits



- Create pedestrian-cyclist links between neighbourhoods separated from motor vehicle traffic that are comfortable for users of all ages and abilities
- Provide connections to existing amenities and services such as transit stops, community facilities and amenities
- Transform industrial green spaces into public spaces for use by residents and visitors
- Build upon sections of the multi-use trail already existing in the Finch Hydro Corridor; a major east-west trail in the north part of the city

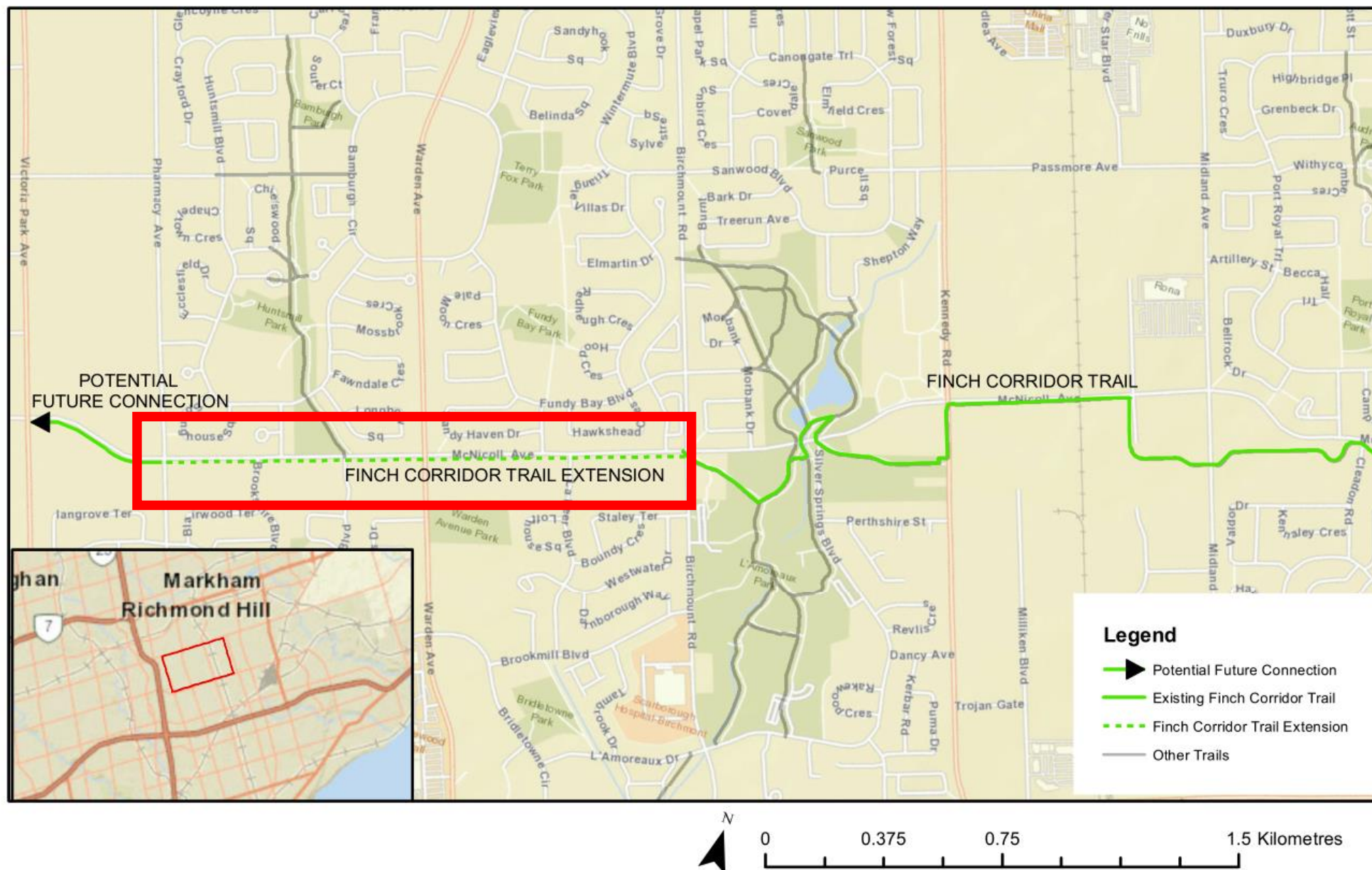
Background Information

- The hydro corridor where the trail is being built is owned by Infrastructure Ontario
- This land is managed by Hydro One Networks Inc. (HONI) and the trail is considered a secondary use on the land
- As the trail builder, the City must abide by regulations of HONI for the design, construction and maintenance of the trail
- The following studies are required prior to construction:
 - Stage 2 Archeological Assessment Study
 - Electromagnetic Field (EMF) Study
 - Species at Risk Study
- Approvals must also be obtained from:
 - Enbridge and Trans Northern Pipelines
 - City of Toronto, Urban Forestry



Finch Hydro Corridor Trail looking West from Sentinel Road

Planned Finch Hydro Corridor Trail Project Area



- The multi-use trail will be 1.6 km long
- Please see roll plan for details

Existing Conditions along the Planned Multi-use Trail Alignment



View east from McNicoll Avenue at Pharmacy Avenue. Note the berm / slope with trees beside the road.



View west towards Pharmacy Avenue at Pharmacy Avenue. The trail will be located to the left of the existing trees, in the area of mown grass.



View east from Stonebridge Avenue towards Warden Avenue in the background.



View west from Stonebridge Avenue. , with McNicoll Avenue on the right side of the photo.



View east from Warden Avenue. Note the soccer pitch on the right side of the photo. The trail will be located between the treed slope/berm along McNicoll Avenue and the hydro tower (right side of photo).



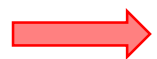
View east towards LaPeer Boulevard from east of the soccer pitch. The trail will be located between the trees along McNicoll Avenue (left side of photo) and the hydro tower (right side of photo).



View east towards Birchmount Avenue in the background.



View west from Birchmount Road at McNicoll Avenue. The trail will be located between the trees on the right side of the photo and the hydro tower to the left of the trees



The arrow indicates the approximate location and alignment of the planned multi-use trail

Typical Multi-Use Trail Cross-section

The trail design is based on the City's Multi-use Trail Design Guidelines (2014), with the following key design features:

- 3.6 metres wide
- Paved with asphalt
- Maximum slope of 5% (1 in 20)
- Will include signage and markings to ensure user safety, convenience and comfort

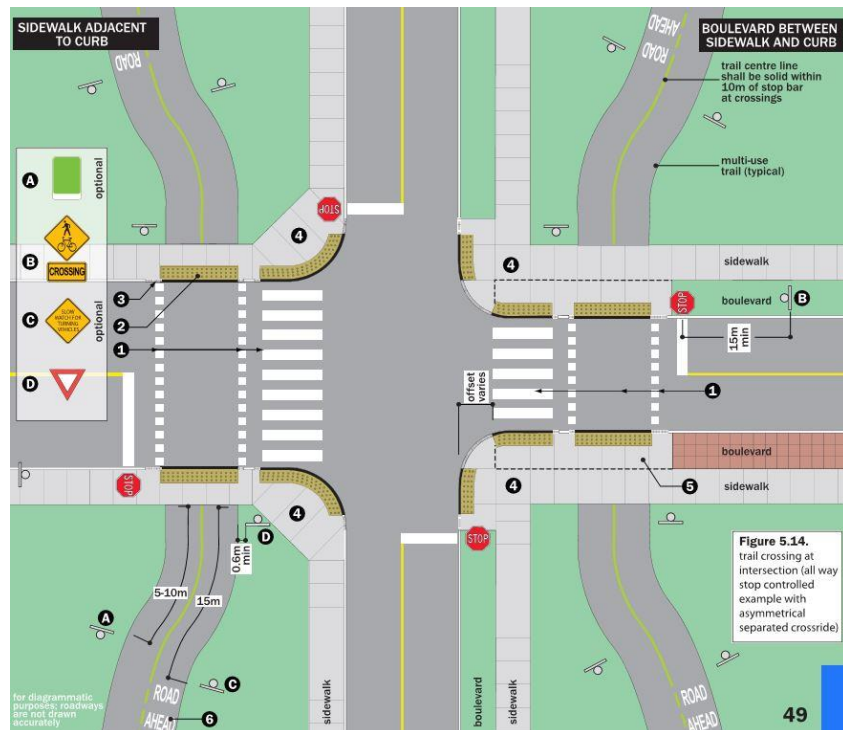


Roadway Crossings



Example of Signalized Road Crossing at Alness Street on the Finch Hydro Corridor Trail

- Along the length of the trail there will be road crossings at existing signalized intersections at Birchmount Road and Warden Avenue; and existing non-signalized (i.e. stop controlled) crossings at La Peer Boulevard, Stonebridge Boulevard and Brookshire Boulevard



Typical crossing at a non-signalized (i.e. stop controlled) intersection (City of Toronto Multi-Use Trail Design Guidelines- 2014)

- At each road crossing the trail will be aligned to meet the existing road intersections with McNicoll Avenue
- Modifications will be made to the existing road intersections to ensure trail user safety and trail continuity

Design Features

The trail will be designed as a multi-use facility and provide shared space for a variety of users (cyclists, pedestrians, in-line skaters, wheelchair users etc.).



- **Trail Amenities:** bike parking and trash bins at key entrance locations, regular 3-season maintenance (no winter maintenance)



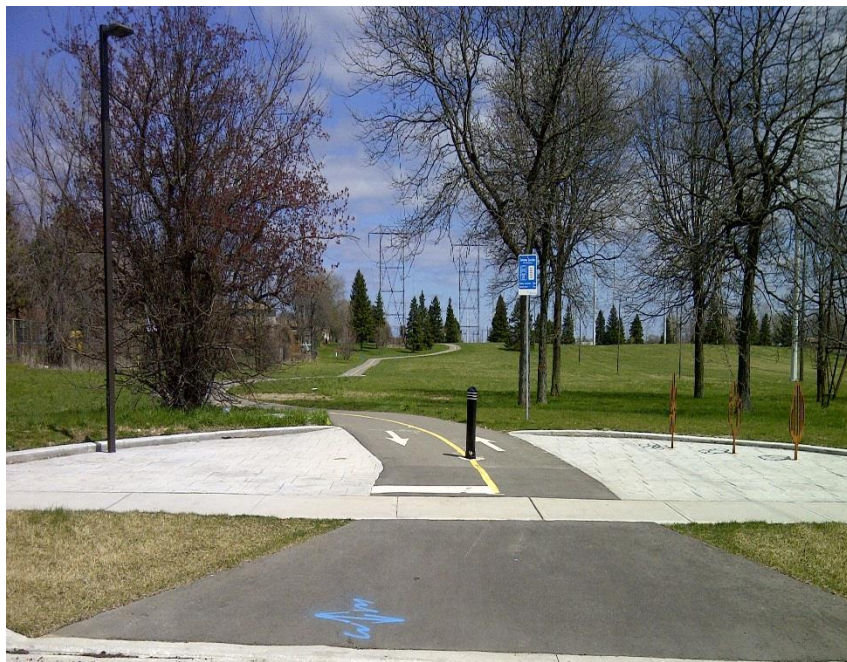
- **Safety Features:** clear sight-lines, way-finding and regulatory signage



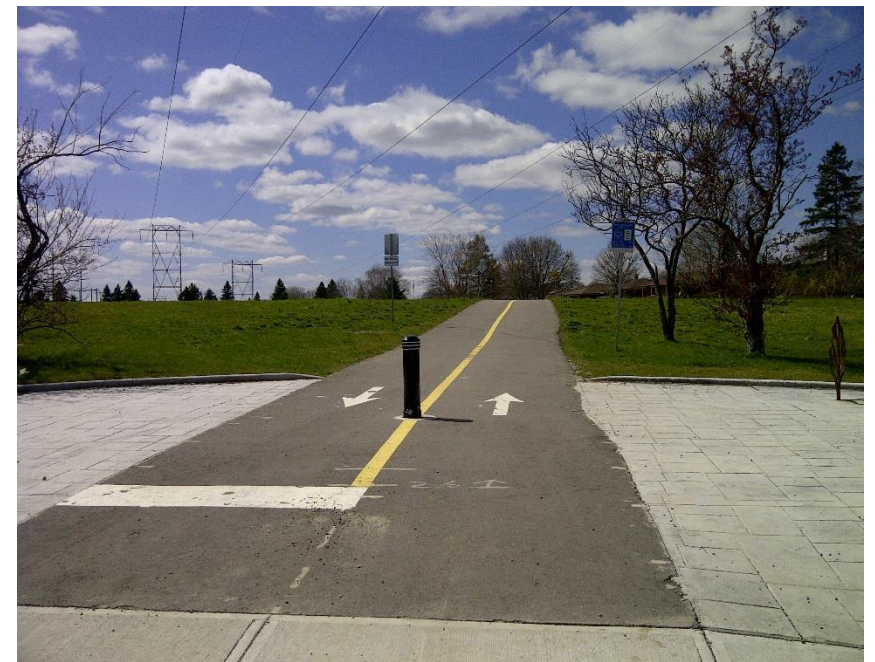
- **Design features to encourage safe cycling speed:** signage, pavement marking and nodes at intersections
- **Design features to serve trail capacity:** trail designed to be wide enough to support expected usage



Design Considerations: Trail Nodes



Trail Nodes: Connection points/intersections (trail to road) with amenities such as bike racks, trash bins, etc.



Safety and Accessibility

- This project will comply with requirements set out by the Accessibility of Ontarians with Disability Act (AODA) and the City's Multi-use Trail Guidelines
- To ensure residential privacy, the trail has been designed to provide adequate distance from residences
- The trail has been aligned roughly parallel to McNicoll Avenue so that it is convenient for users and visible from McNicoll Avenue where possible, while maintaining existing trees along the south side of the road
- The City will be responsible for ensuring the trail is well maintained
- An Electromagnetic Field (EMF) Study will be undertaken to ensure that the alignment of the trail and resting spots along the corridor mitigate EMF exposure for young children and other trail users
- Toronto Police Service provides some patrol coverage (generally officers on bicycles) of the City's major trails. Residents are encouraged to call 311 for any concerns and 911 for any emergencies

Next Steps

- Discuss your comments, support, questions or concerns with City staff and project team at this meeting
- Fill out a comment form, so we may consider your input. Comment forms may be dropped off with a staff person as you leave
- If you would like to submit your comment form at a later date, you may do so by email or mail. Please submit your comment form by **February 13, 2018**
- Comment forms are also available online at the project website (see below for website URL)
- Construction of the trail between Pharmacy Avenue and Birchmount Road is expected to start in summer 2018 and a separate notice will be sent out prior to construction
- All approvals and agreements are required prior to construction

Stephanie Gris Bringas
Senior Public Consultation Coordinator
Public Consultation Unit
Email: Stephanie.GrisBringas@toronto.ca
Tel: 416-392-3643
City of Toronto
Metro Hall, 19th Floor, 55 John St.
Toronto, ON M5V 3C6
TTY: 416-397-0831



The public can also stay informed by requesting to be added to the project mailing list and through the project webpage: www.toronto.ca/finchcorridortrail