

# City of Toronto

## The Changing Landscape of Toronto's Population

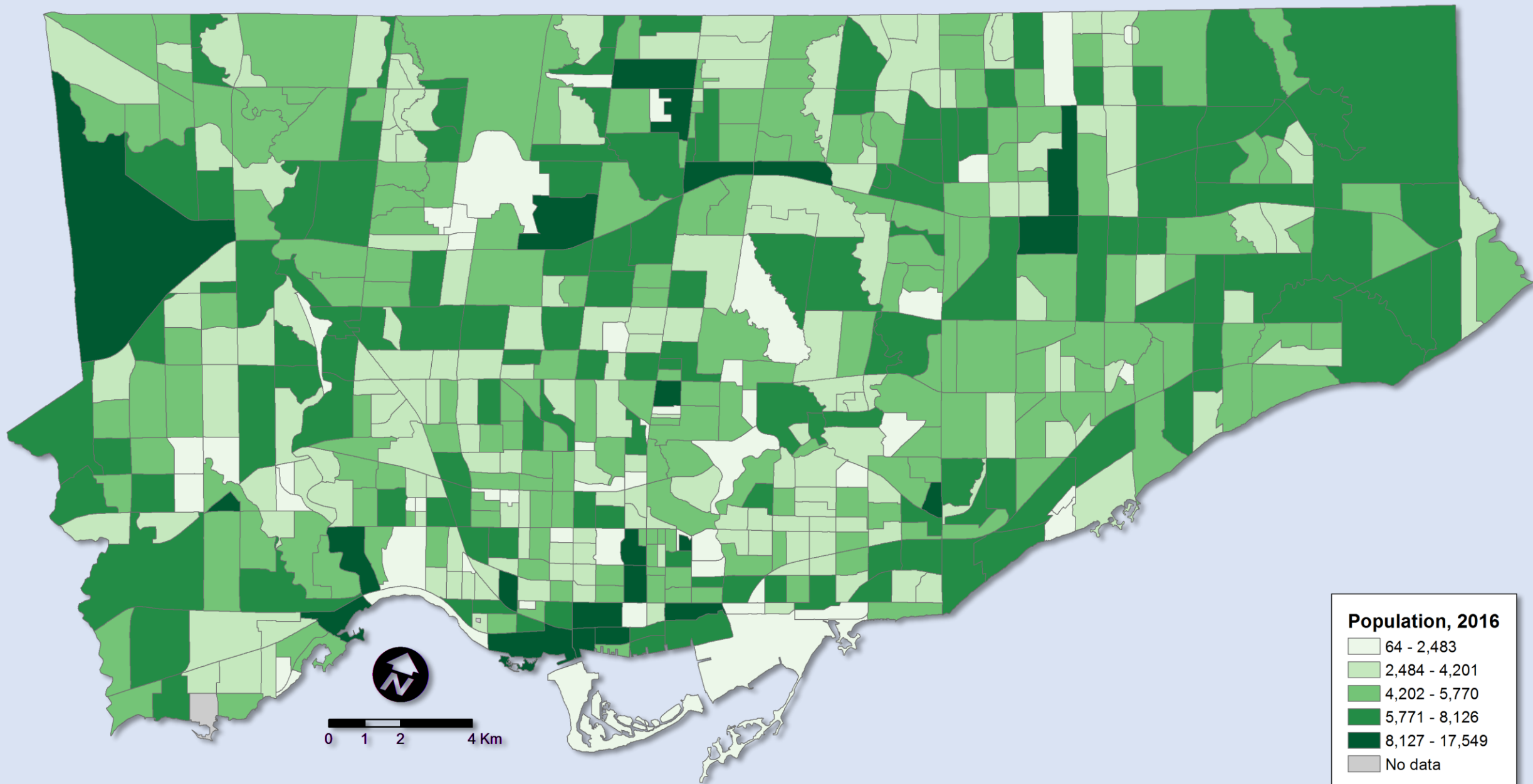


# Population

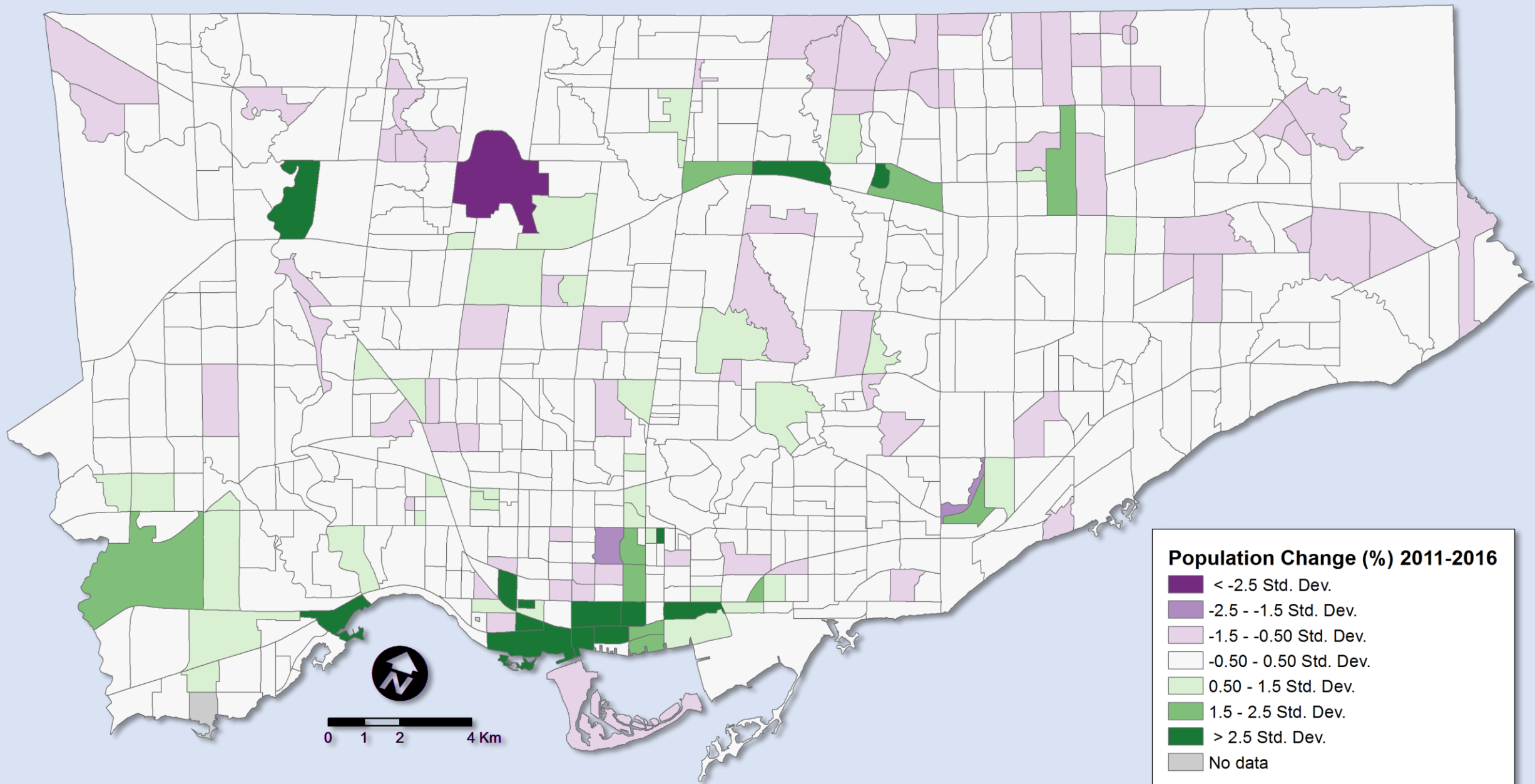
# Population

## Population share and density

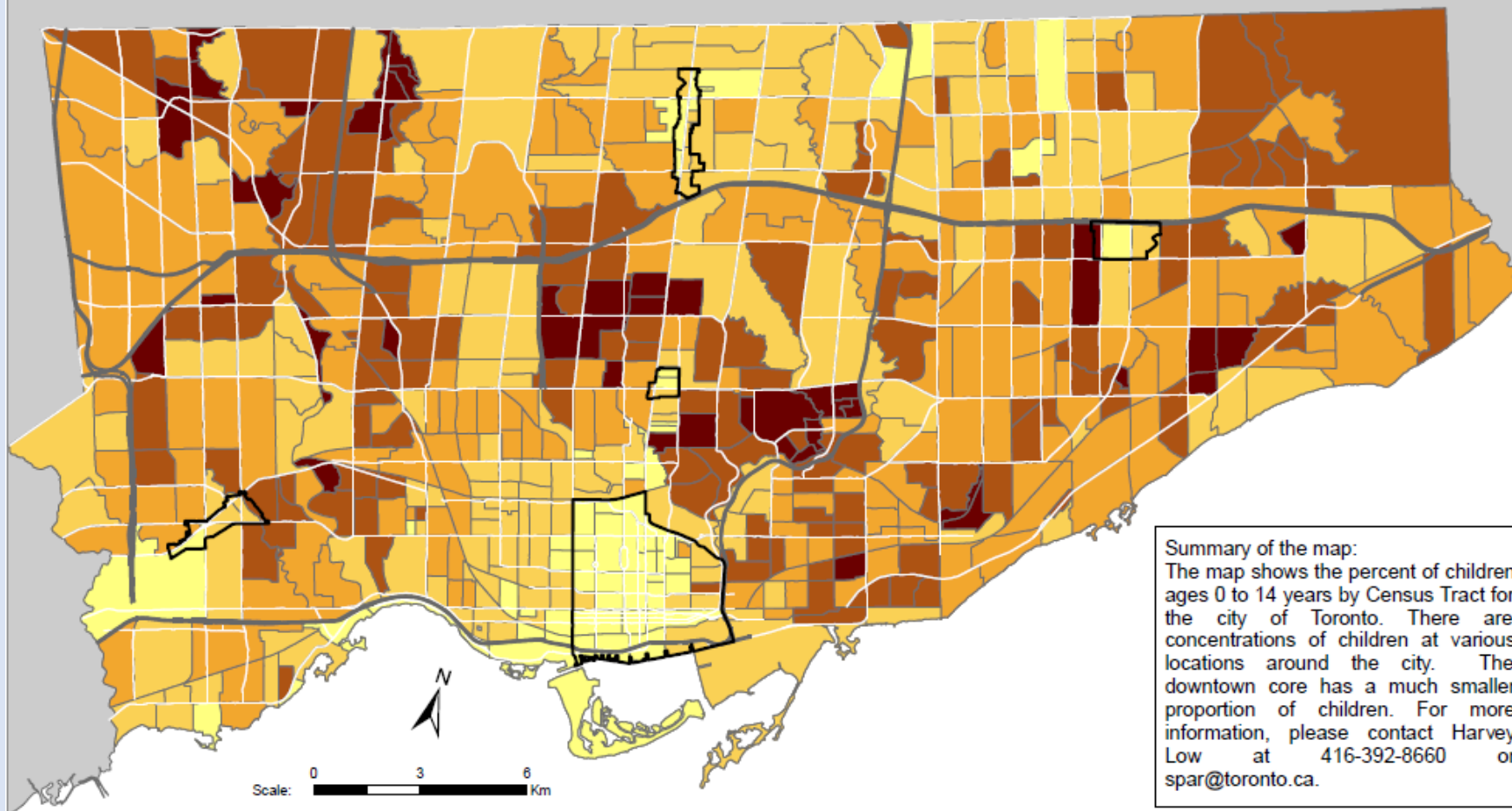
<b>Toronto</b>	<b>2006</b>	<b>2011</b>	<b>2016</b>
Total population	2,503,281	2,615,060	2,731,571
Change from previous	0.9%	4.5%	4.5%
Share of Canada population	7.9%	7.8%	7.8%
Share of Ontario population	20.6%	20.3%	20.3%
Share of GTHA population	41.3%	39.8%	39.3%
Population per km <sup>2</sup>	3,972.1	4,149.5	4,334.4







# Age & Gender



## Legend

### % Children Population

- 0.0% - 9%
- 9.1% - 14%
- 14.1% - 17%
- 17.1% - 21%
- 21.1% - 35.1%

Not available/ No data

Downtown/Centres

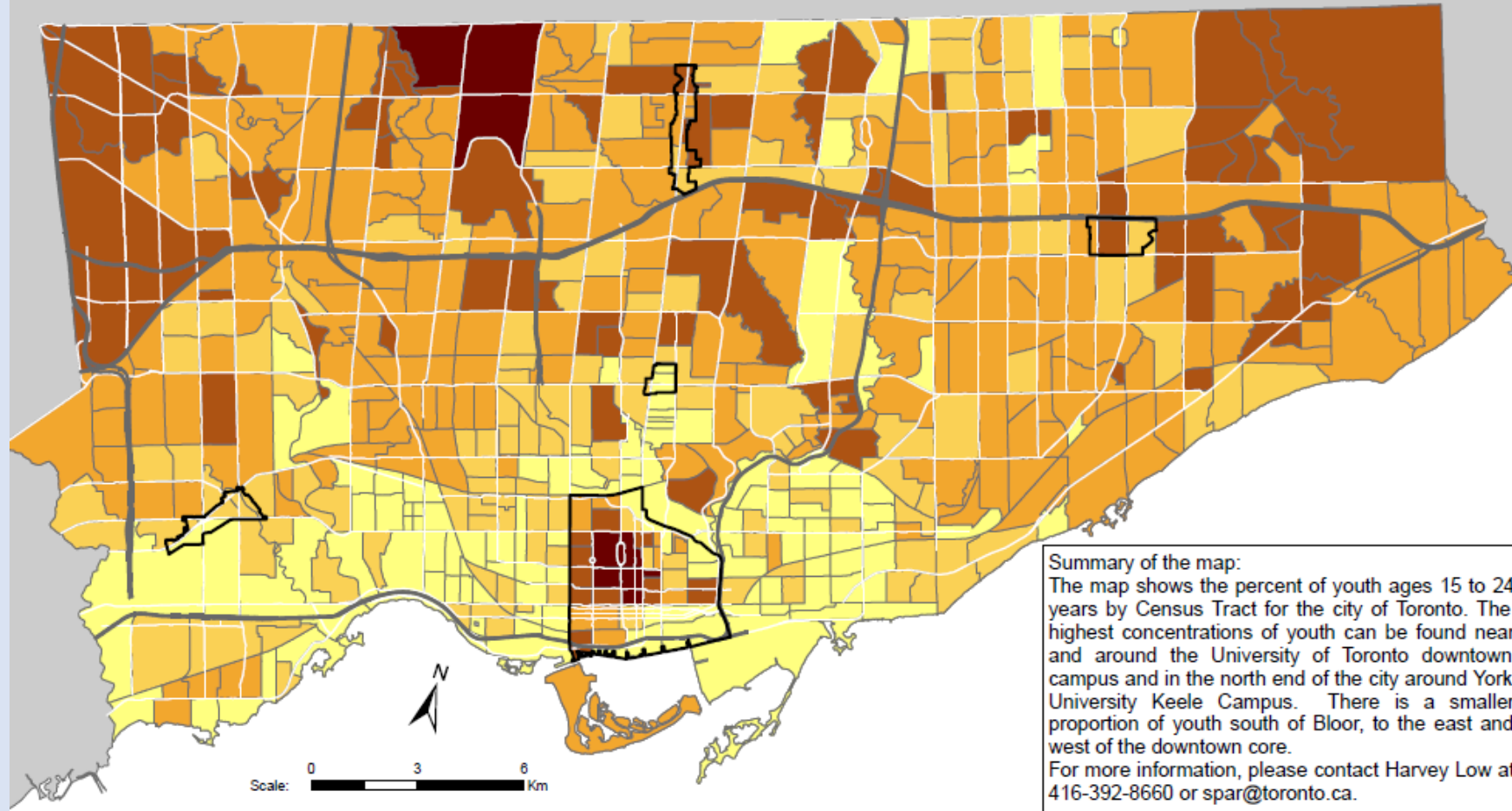
Expressway

Major Arterial

Source: City of Toronto;  
Statistics Canada 2016 Census.

Copyright © 2017 City of Toronto. All Rights Reserved.  
Published: May 2017.

Prepared by: Social Research and Analysis Unit.  
Contact: [spar@toronto.ca](mailto:spar@toronto.ca).



## Legend

### % Youth Population

- 0.0% - 10%
- 10.1% - 12%
- 12.1% - 15%
- 15.1% - 22%
- 22.1% - 33.4%

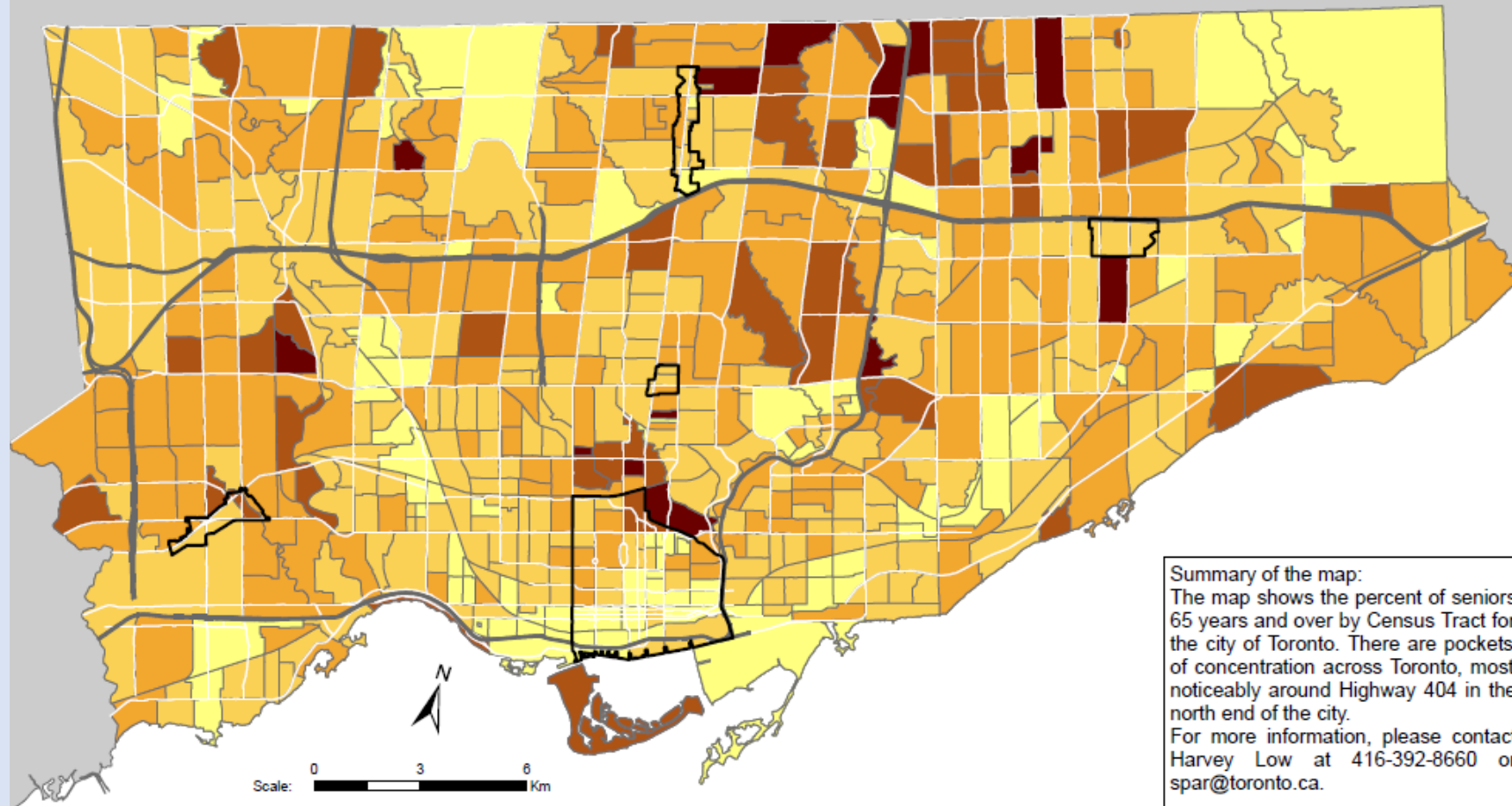
- Not available/ No data
- Downtown/Centres
- Expressway
- Major Arterial

Source: City of Toronto;  
Statistics Canada 2016 Census.

Copyright © 2017 City of Toronto. All Rights Reserved.  
Published: May 2017.

Prepared by: Social Research and Analysis Unit.  
Contact: [spar@toronto.ca](mailto:spar@toronto.ca).

# Map 4: Percent of Seniors 65 Years and Over by Census Tract in 2016



**Summary of the map:**  
The map shows the percent of seniors 65 years and over by Census Tract for the city of Toronto. There are pockets of concentration across Toronto, most noticeably around Highway 404 in the north end of the city.  
For more information, please contact Harvey Low at 416-392-8660 or [spar@toronto.ca](mailto:spar@toronto.ca).

## Legend

### % Seniors Population

- 0.0% - 11%
- 11.1% - 16%
- 16.1% - 23%
- 23.1% - 30%
- 30.1% - 86.8%

- Not available/ No data
- Downtown/Centres
- Expressway
- Major Arterial

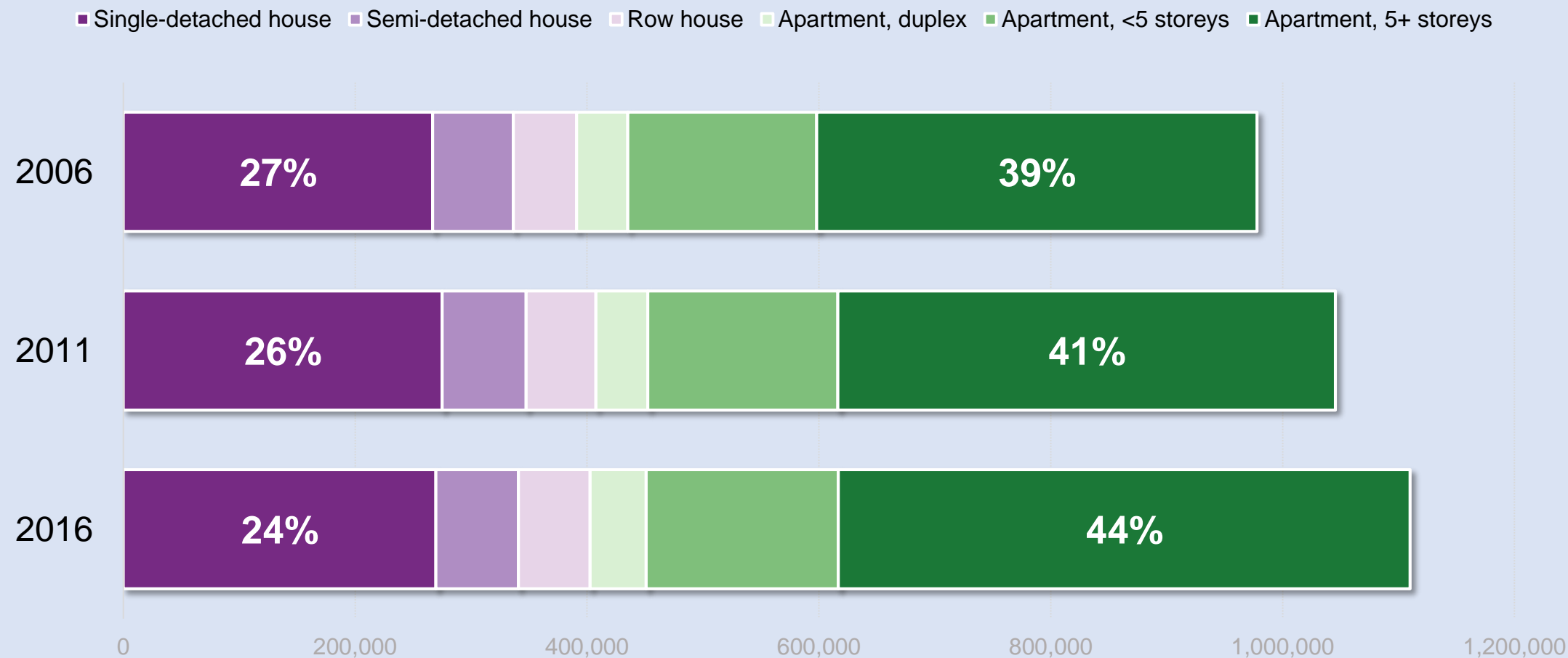
Source: City of Toronto;  
Statistics Canada 2016 Census.

Copyright © 2017 City of Toronto. All Rights Reserved.  
Published: May 2017.

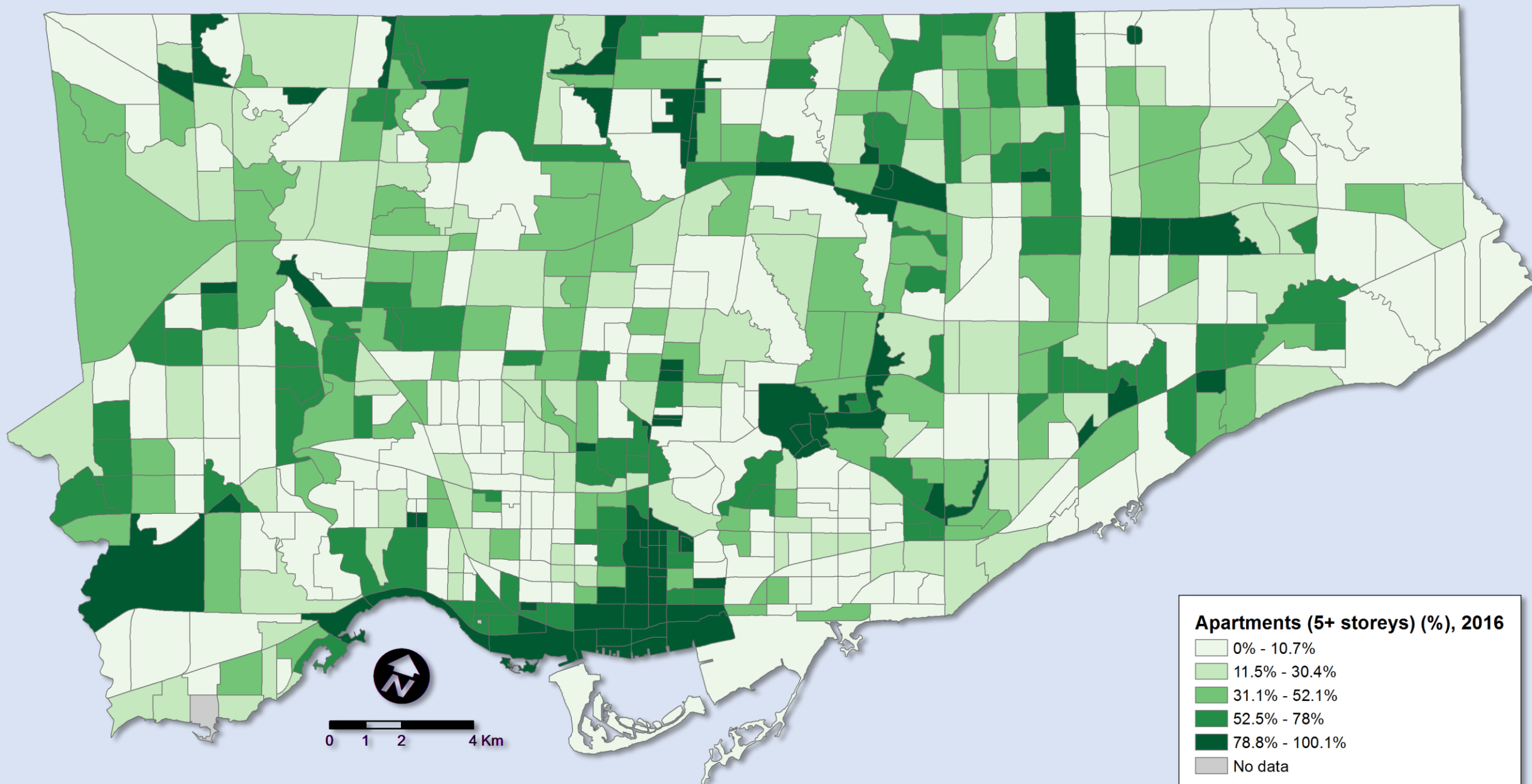
Prepared by: Social Research and Analysis Unit.  
Contact: [spar@toronto.ca](mailto:spar@toronto.ca).

# Dwellings

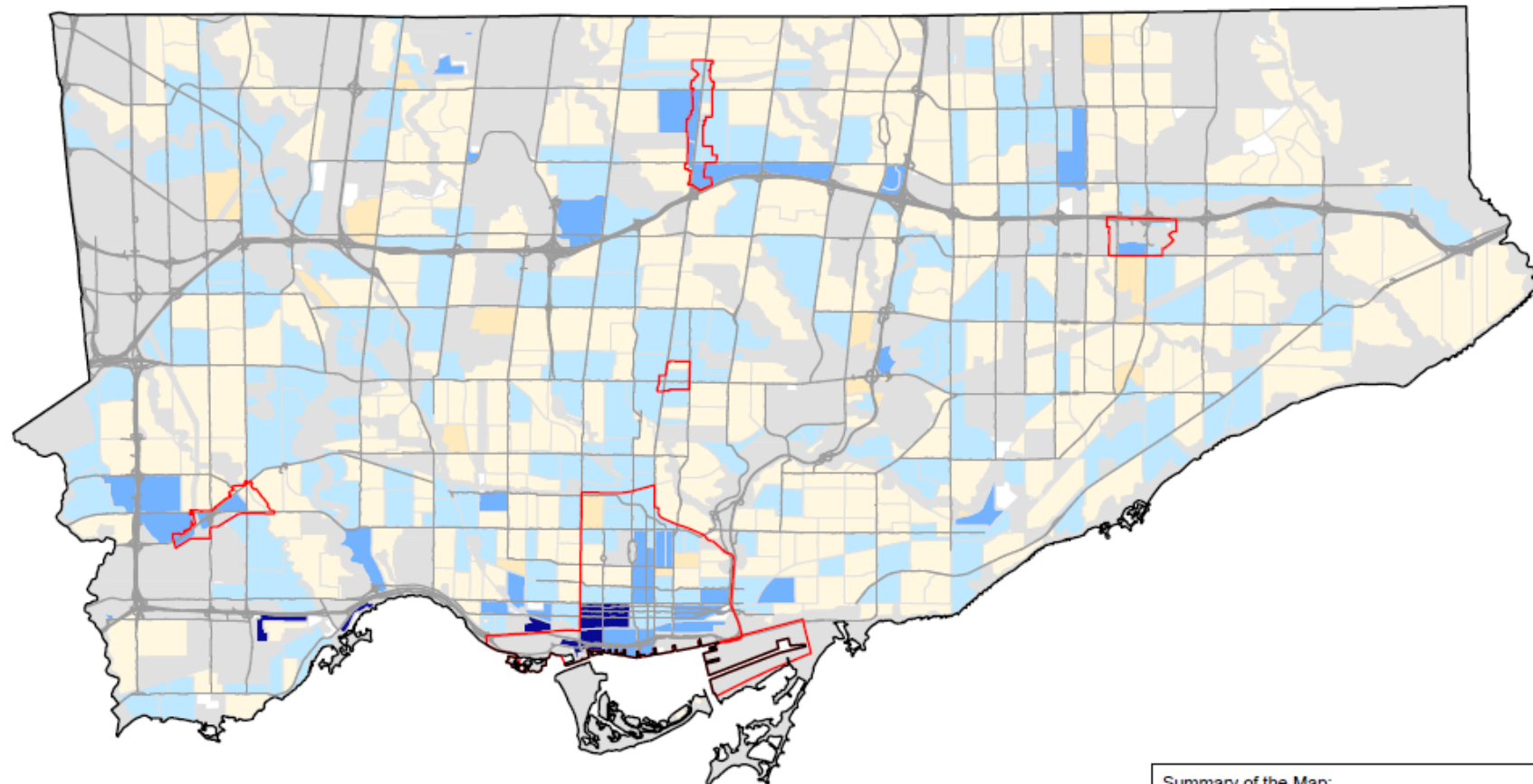
# Type of dwelling





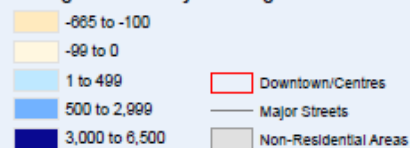






**Summary of the Map:**  
The map shows the absolute change in apartment dwellings with 5 or more storeys by Census Tract.

## Change In 5+ Storey Dwellings



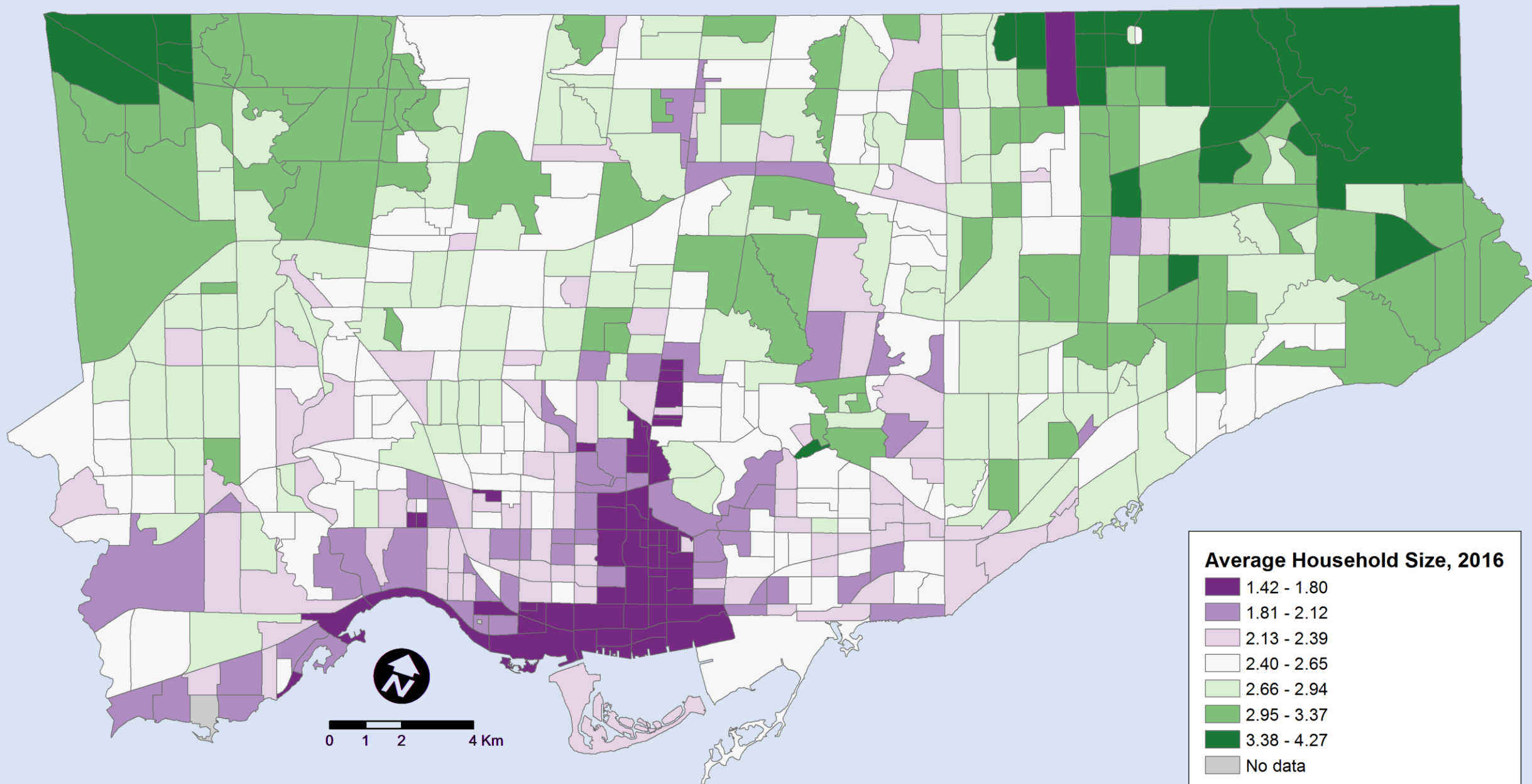
Scale: 0 3 6 Km

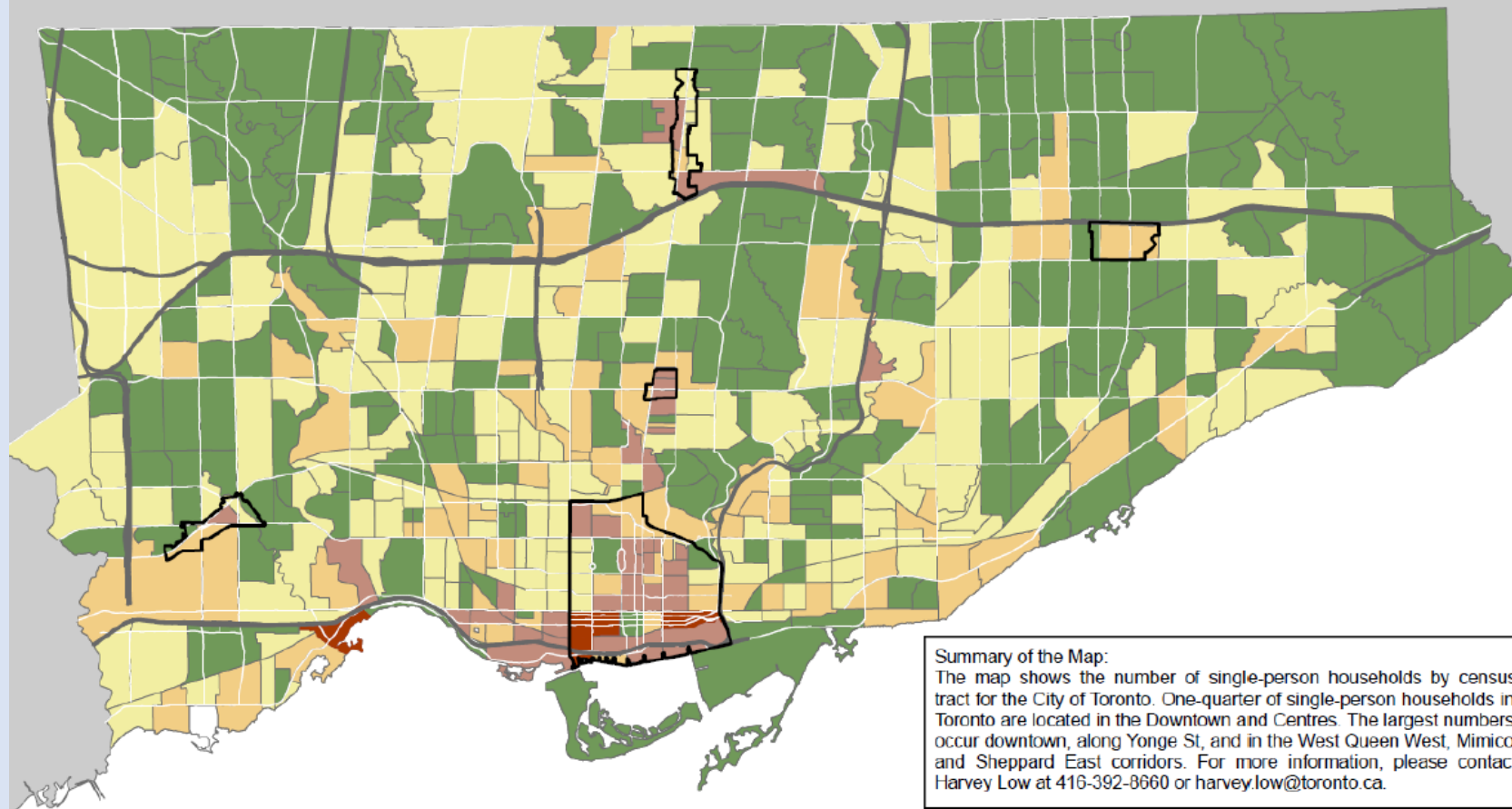
Source: City of Toronto;  
Statistics Canada 2016 Census.

Copyright © 2017 City of Toronto. All Rights Reserved.  
Published: May 2017.

Prepared by: Toronto City Planning, Research and Information.

# Households

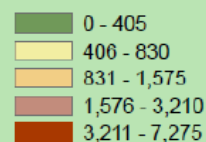




**Summary of the Map:**  
The map shows the number of single-person households by census tract for the City of Toronto. One-quarter of single-person households in Toronto are located in the Downtown and Centres. The largest numbers occur downtown, along Yonge St, and in the West Queen West, Mimico and Sheppard East corridors. For more information, please contact Harvey Low at 416-392-8660 or [harvey.low@toronto.ca](mailto:harvey.low@toronto.ca).

## Legend

### Private households by household size



City of Toronto Single-Person Households 2016  
Summary of the Map:  
The map shows the number of single-person households by Census Tract for the City of Toronto. The largest numbers occur downtown, along Yonge St, and in the West Queen West, Mimico and Sheppard East corridors.  
For more information, please contact Harvey Low at 416-392-8660 or [harvey.low@toronto.ca](mailto:harvey.low@toronto.ca).

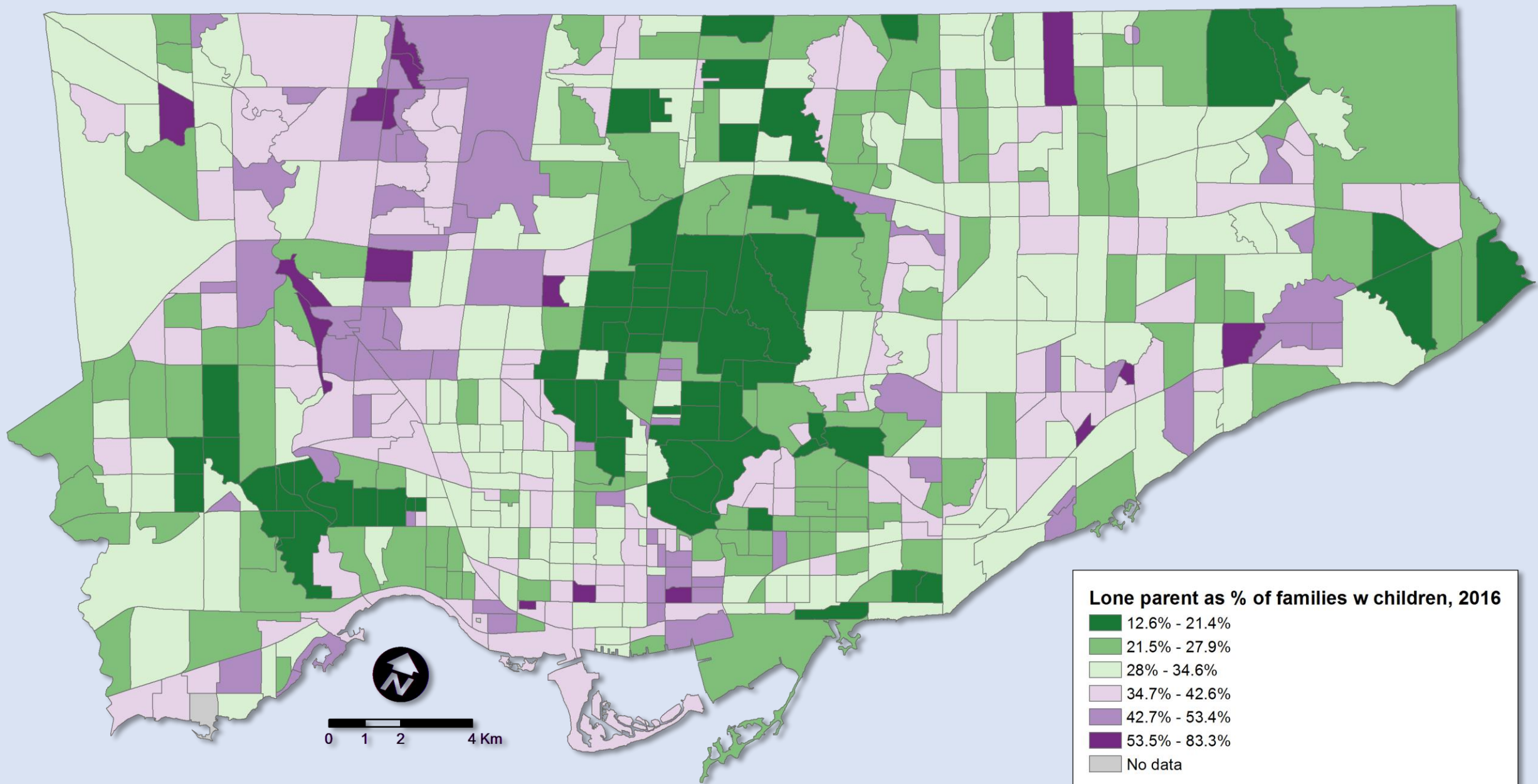


Scale: 0 3 6 Km

Source: City of Toronto;  
Statistics Canada 2016 Census.

Copyright © 2017 City of Toronto. All Rights Reserved.  
Published: Aug 2017.

Prepared by: Social Research and Analysis Unit.  
Contact: [spar@toronto.ca](mailto:spar@toronto.ca).

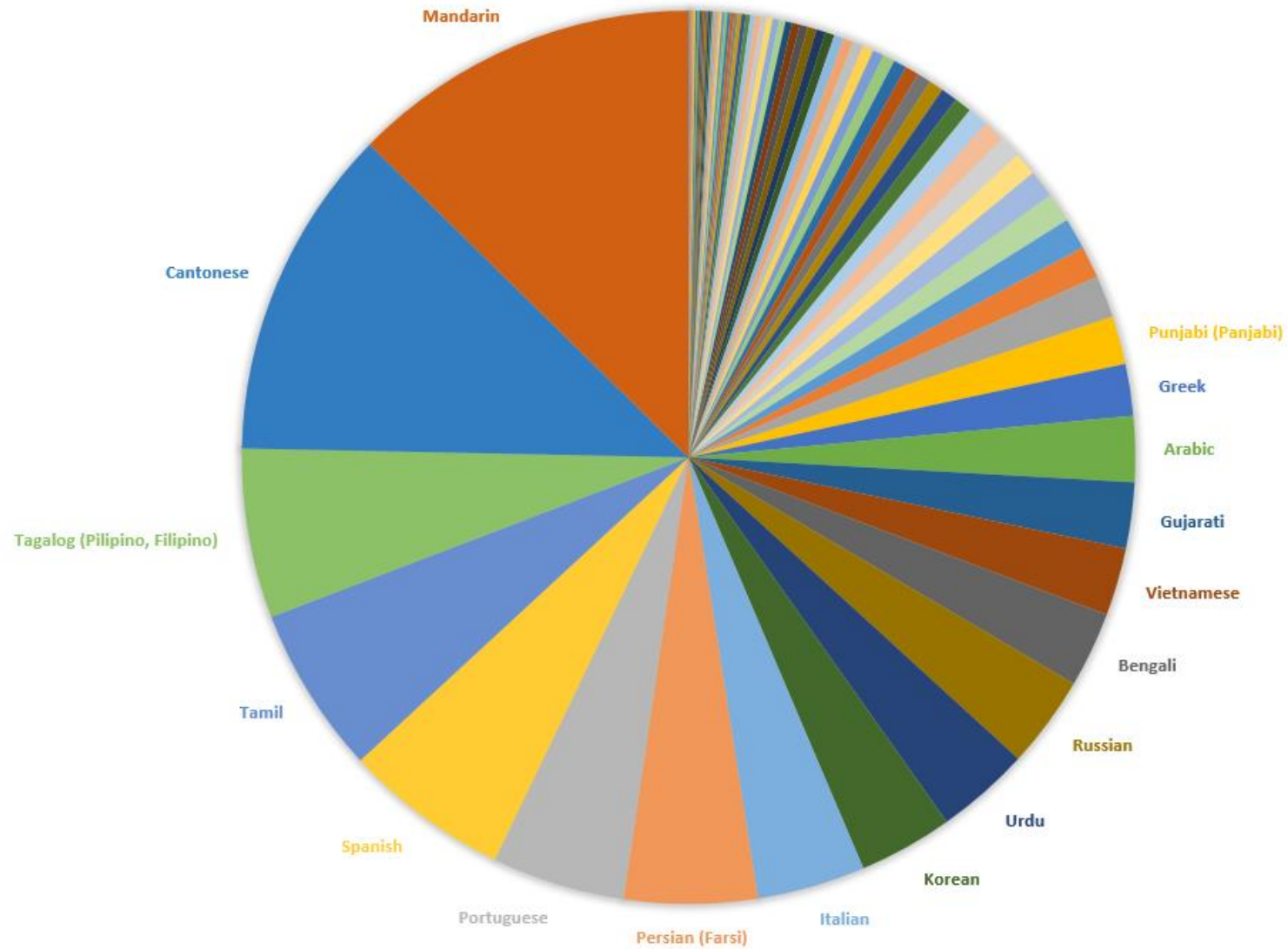


# Language



# DIVERSITY IN TORONTO

## MOTHER-TONGUE LANGUAGES (EXCLUDING ENGLISH & FRENCH)



# Top Languages in Toronto

## Excluding English

### Mother Tongue

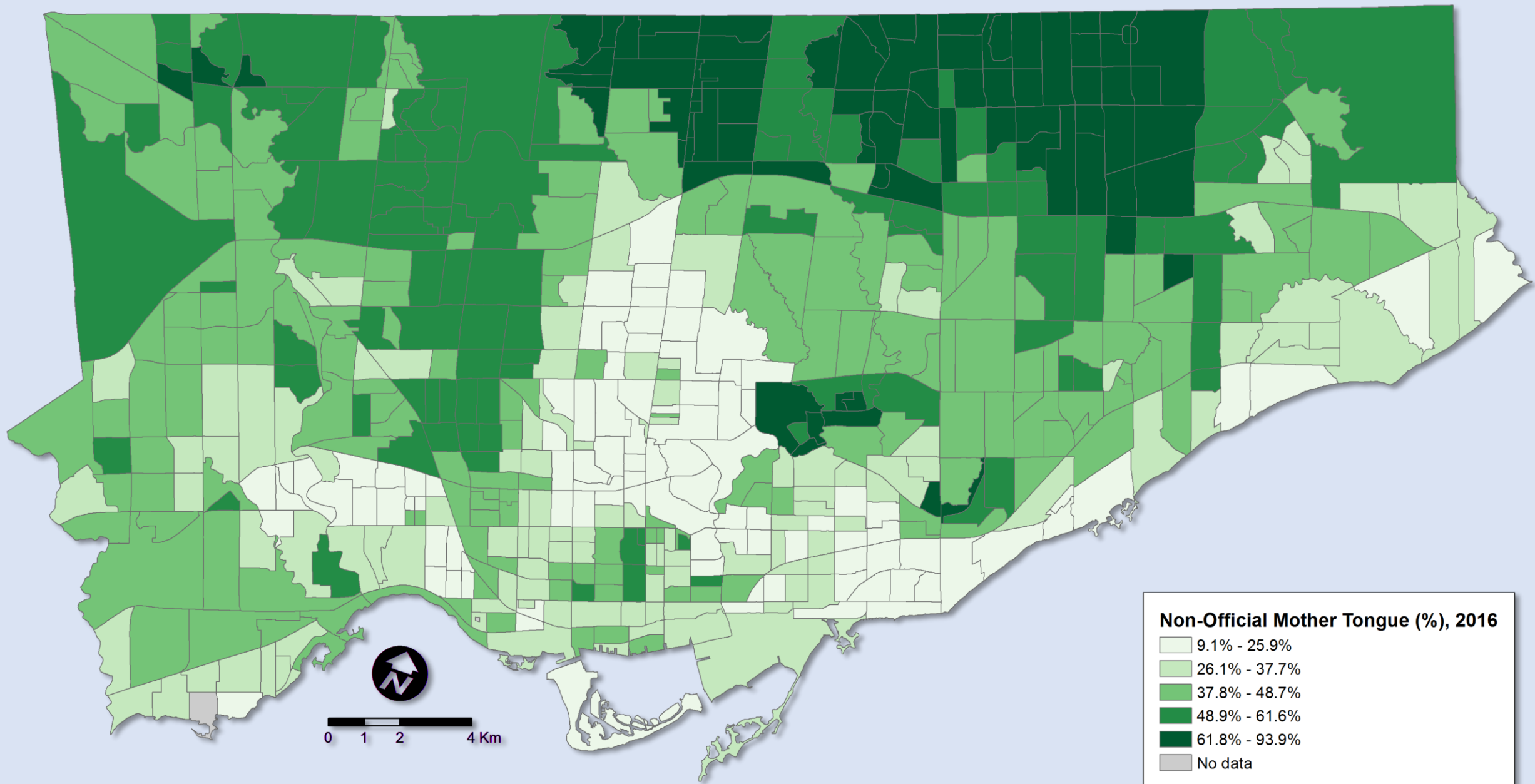
Rank in 2016	Mother Tongue	Persons	% of Toronto	Rank in 2011	Change since 2011
1	Cantonese	114,670	4.4%	2*	n/a*
2	Mandarin	111,405	4.3%	1*	n/a*
3	Tagalog	83,230	3.2%	5	+18.0%
4	Spanish	72,850	2.8%	4	+3.0%
5	Italian	62,640	2.4%	3	-13.0%
6	Portuguese	59,360	2.3%	8	+2.0%
7	Tamil	57,535	2.2%	6	-7.0%
8	Persian (Farsi)	49,190	1.9%	9	+17.0%
9	Urdu	37,425	1.4%	10	-2.0%
10	Russian	36,145	1.4%	11	-2.0%
11	French	35,365	1.4%	13	+8.0%
12	Korean	33,665	1.3%	14	+8.0%
13	Arabic	29,825	1.1%	18	+14.0%
14	Bengali	28,460	1.1%	19	+17.0%
15	Greek	27,840	1.1%	15	-4.0%

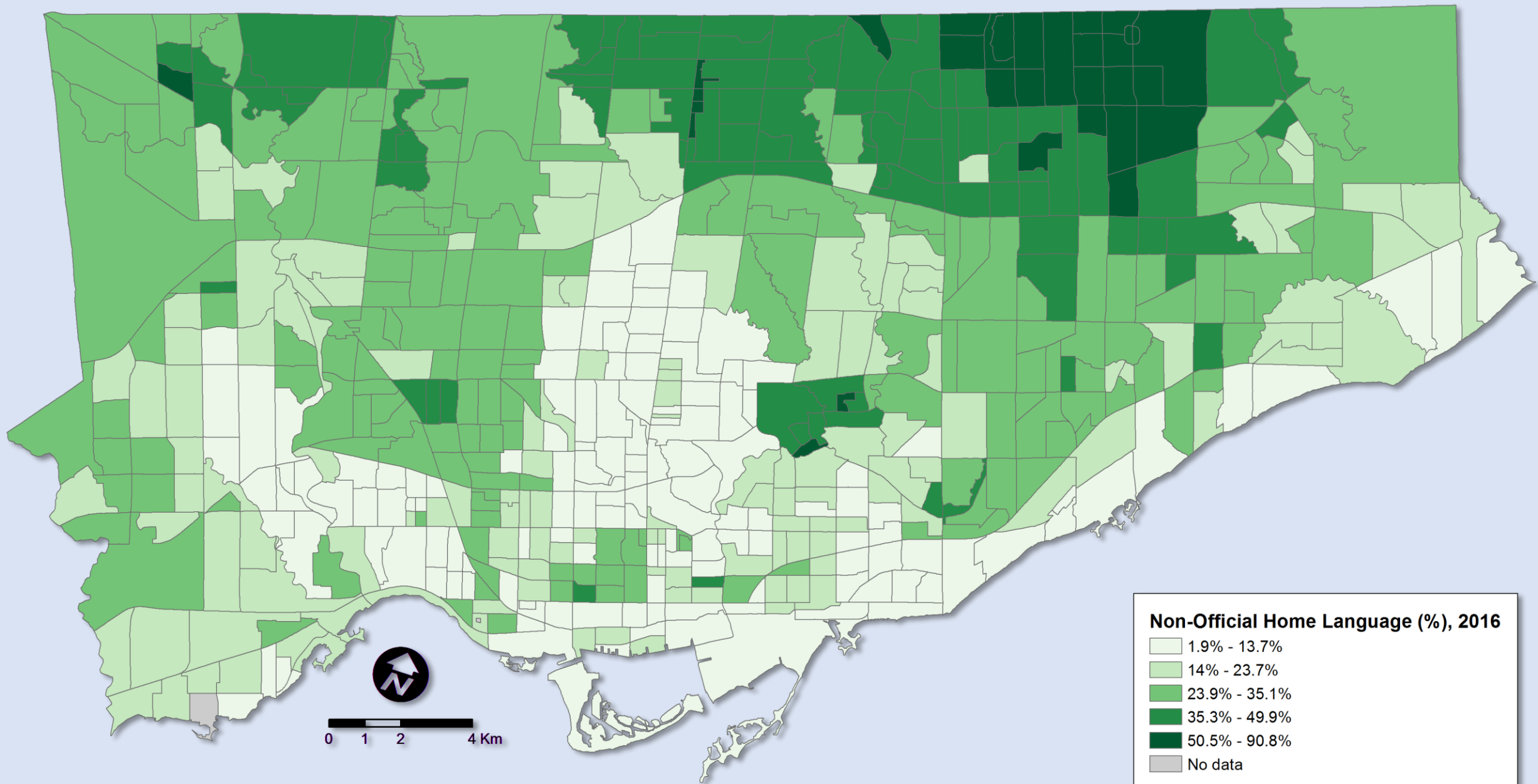
### Home Language

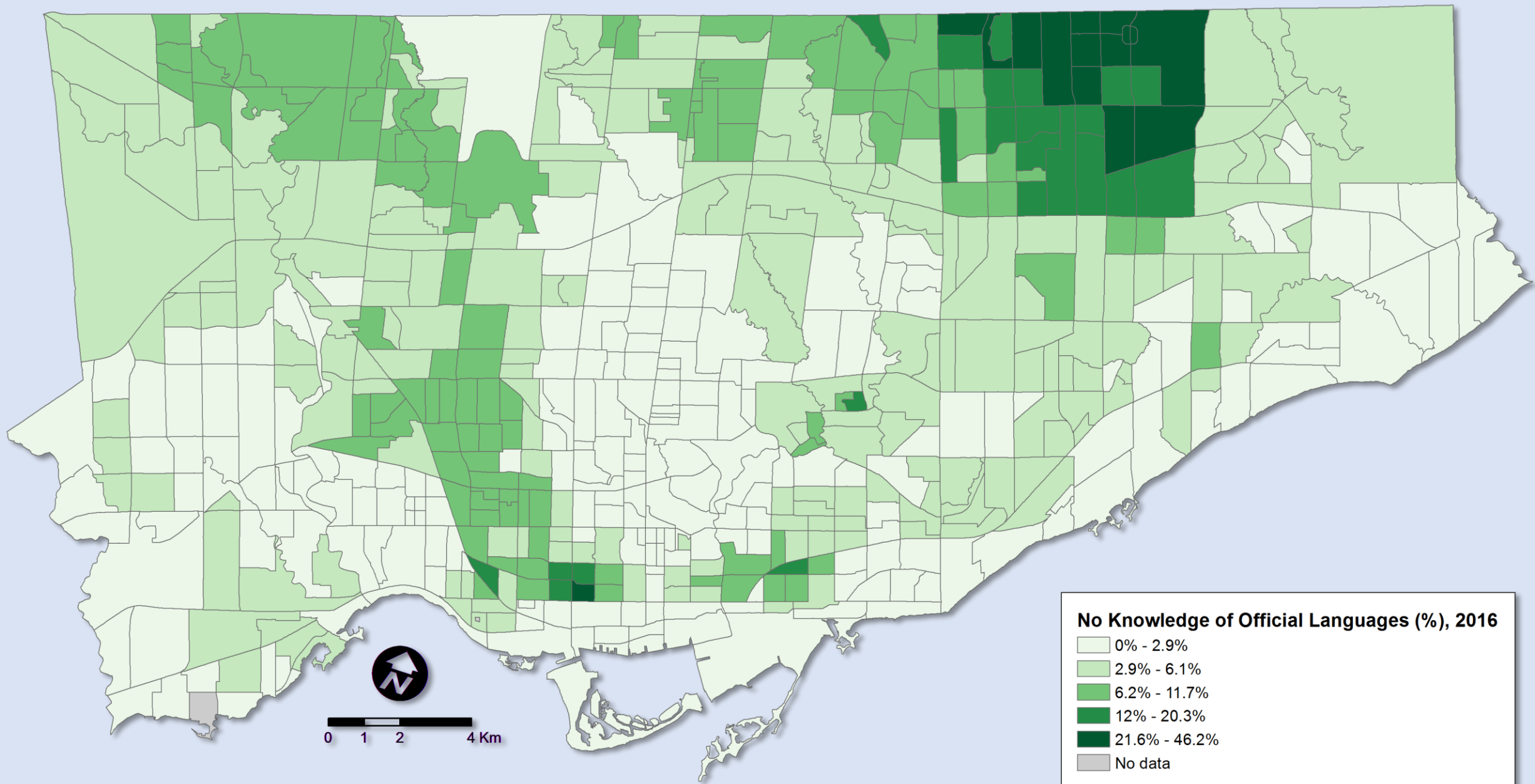
Rank in 2016	Home Language	Persons	% of Toronto	Rank in 2011	Change since 2011
1	Mandarin	87,760	3.6%	3*	n/a*
2	Cantonese	83,405	3.4%	1*	n/a*
3	Tagalog	42,520	1.7%	6	14%
4	Tamil	42,020	1.7%	4	-14%
5	Spanish	41,530	1.7%	5	-8%
6	Portuguese	33,425	1.4%	8	-3%
7	Persian (Farsi)	33,375	1.4%	9	9%
8	Italian	27,130	1.1%	7	-23%
9	Urdu	23,625	1.0%	11	-11%
10	Korean	23,625	1.0%	12	1%
11	Russian	23,075	0.9%	10	-14%
12	Bengali	18,930	0.8%	14	6%
13	Vietnamese	17,020	0.7%	15	-4%
14	French	16,995	0.7%	20	26%
15	Gujarati	16,525	0.7%	13	-14%

THESE TABLES NOT YET CORRECTED WITH REVISED DATA.  
NUMBERS OF FRENCH SPEAKERS WILL GO UP SLIGHTLY.



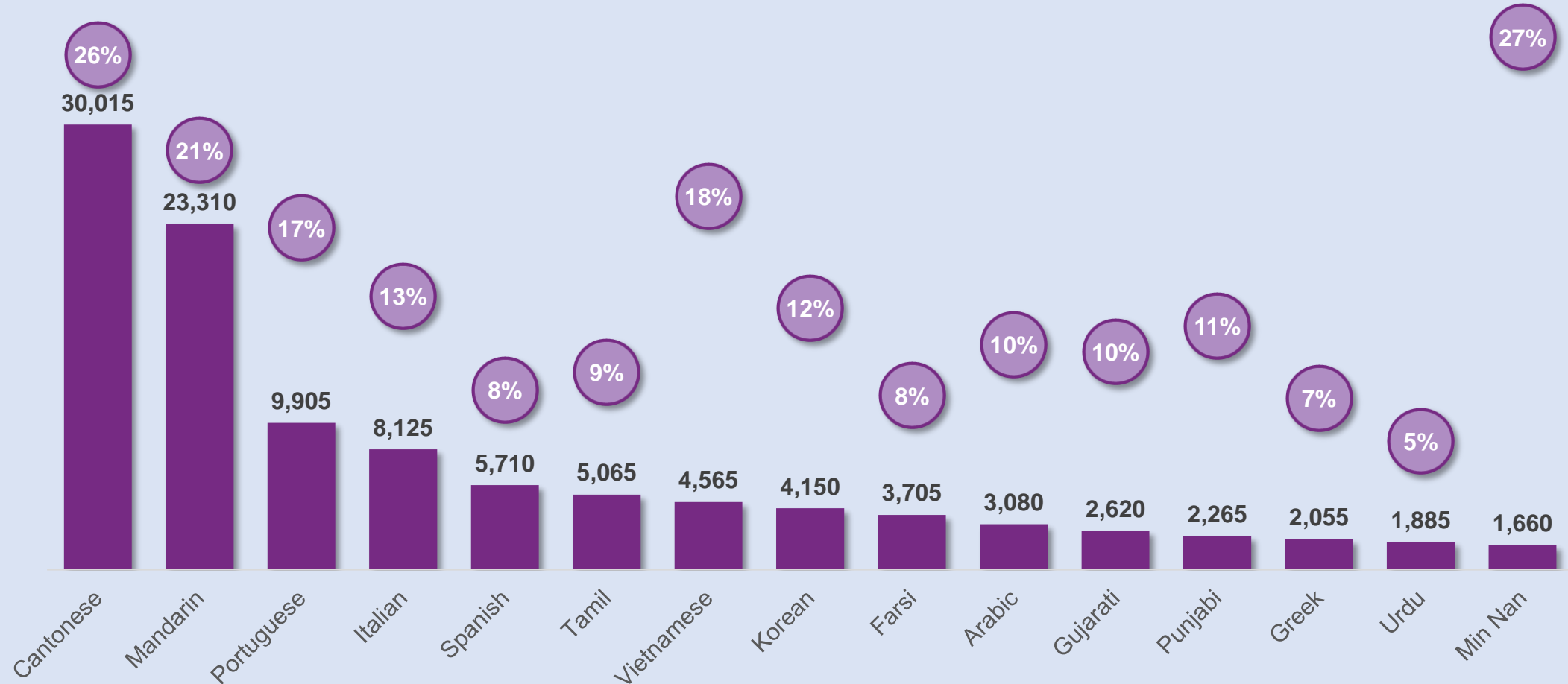






# People with no knowledge of English by Mother Tongue

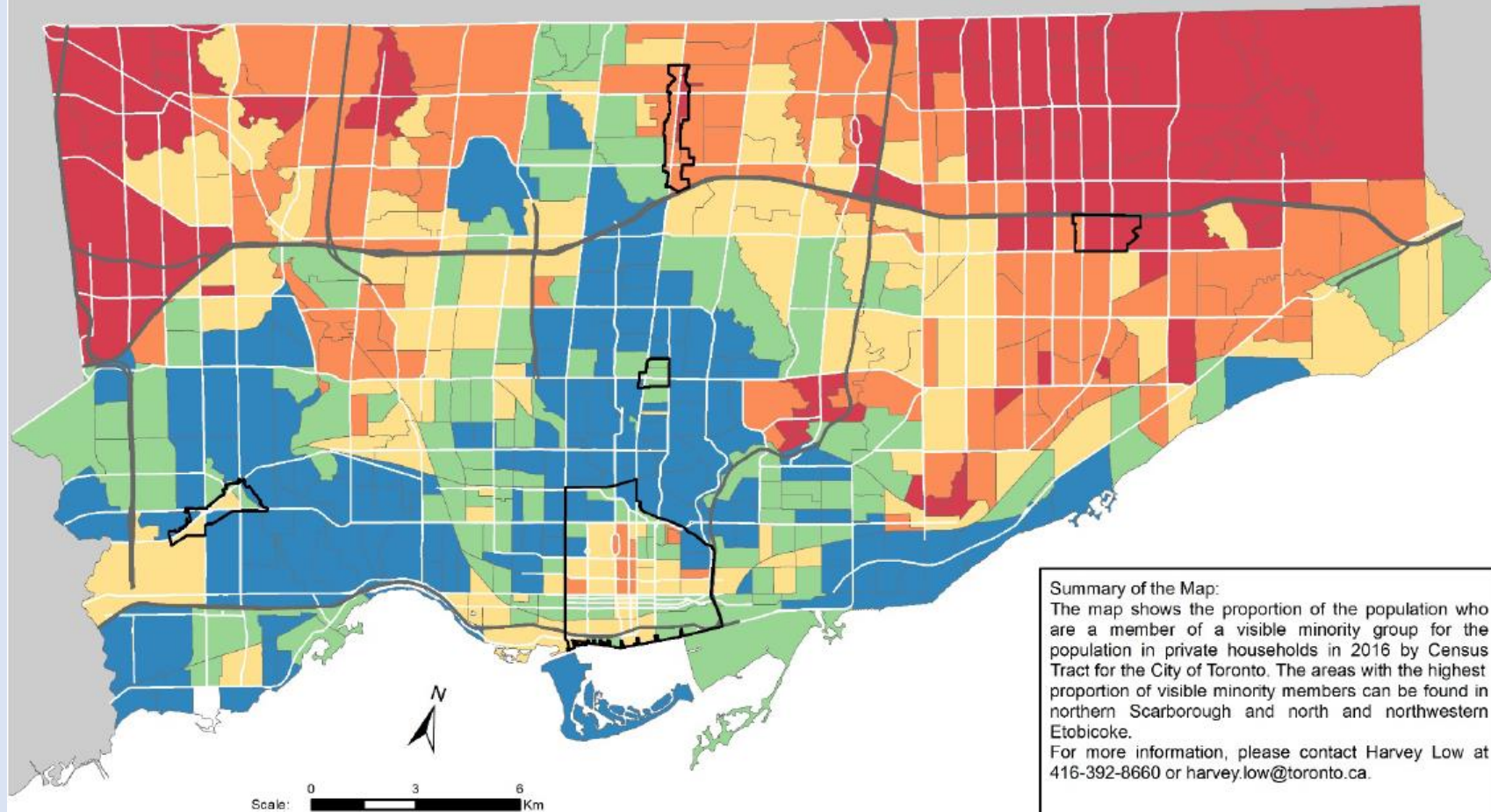
## Top 15 languages, also with rate of no knowledge by mother tongue language



Statistics Canada - 2016 Census of Population  
Catalogue Number 98-400-X2016054  
Toronto Census Division

# Immigration & Ethnicity

# Proportion of Population who are Members of a Visible Minority Group, Toronto 2016



## Legend

### Percent visible minority for the population in private households

- 2.3% - 26.8%
- 26.9% - 42.8%
- 42.9% - 60.7%
- 60.8% - 78.5%
- 78.6% - 100%

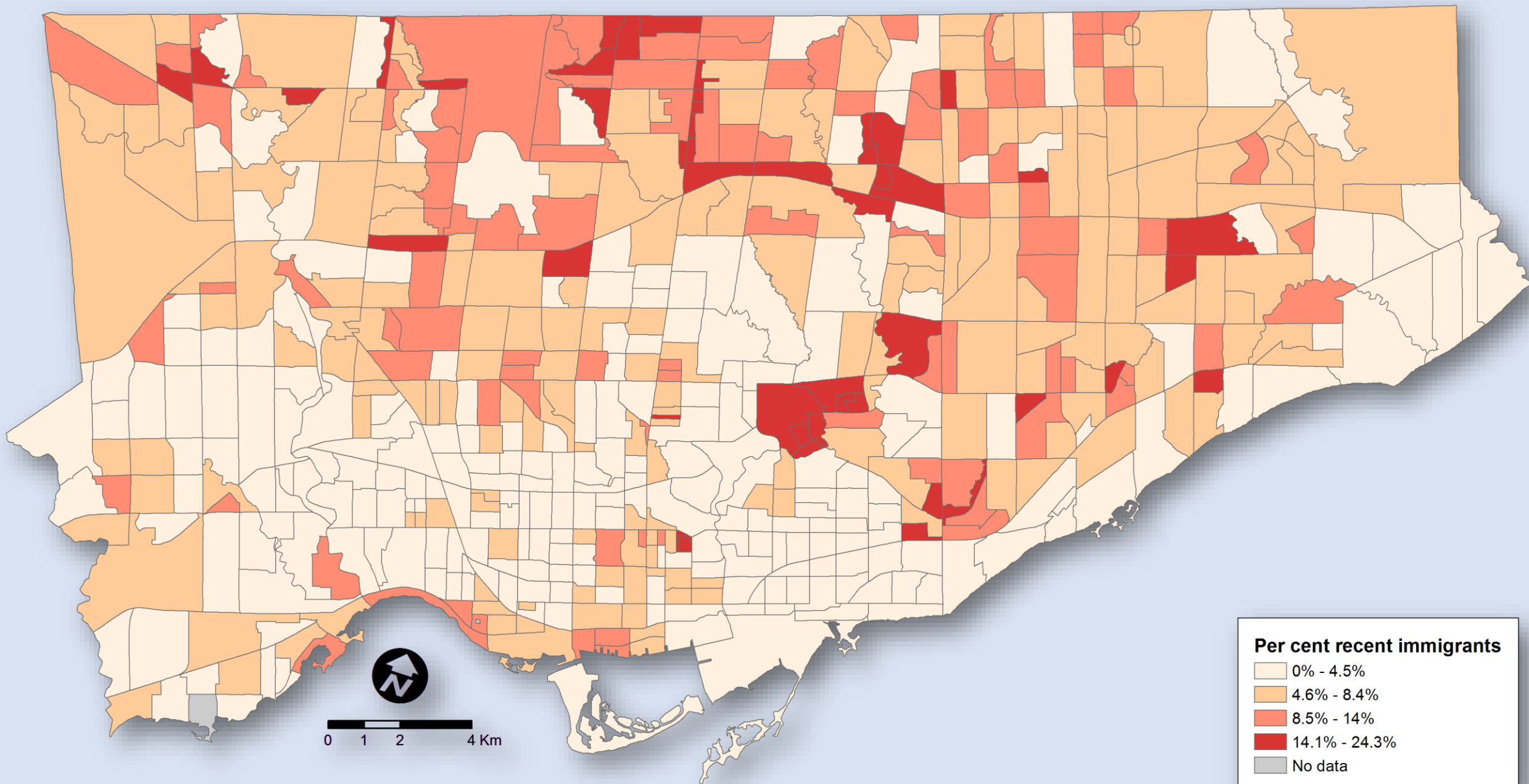
- Not available/ No data
- Downtown/Centres
- Expressway
- Major Arterial

Source: City of Toronto;  
Statistics Canada 2016 Census.

Copyright © 2017 City of Toronto. All Rights Reserved.  
Published: October 2017.  
Version: 1.0 (future versions of this map may change)

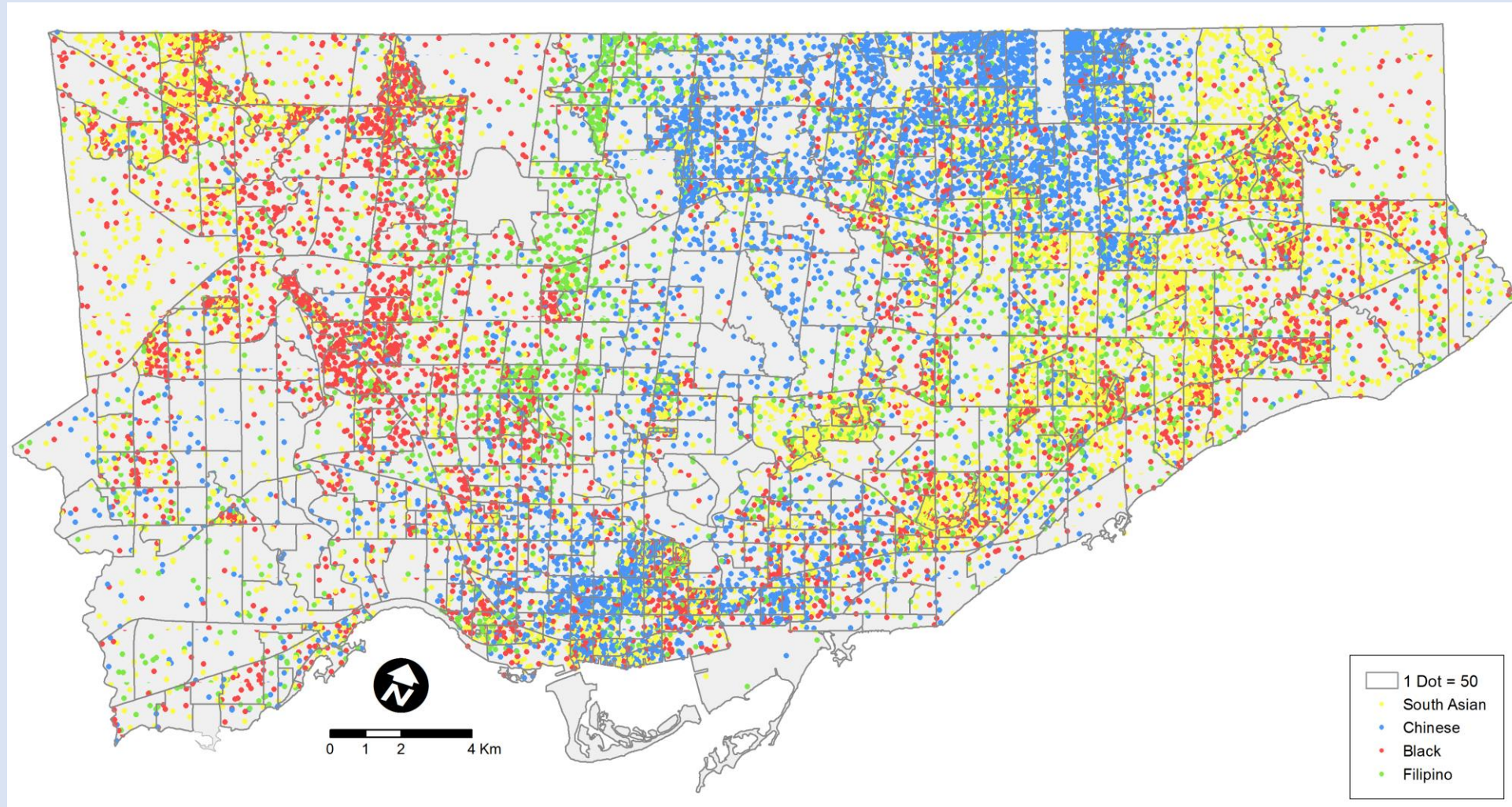
Prepared by: Social Research and Analysis Unit.  
Contact: [spar@toronto.ca](mailto:spar@toronto.ca)





# Visible Minority Population

top 4 visible minority groups in Toronto





# Country of Birth

## Recent immigrants

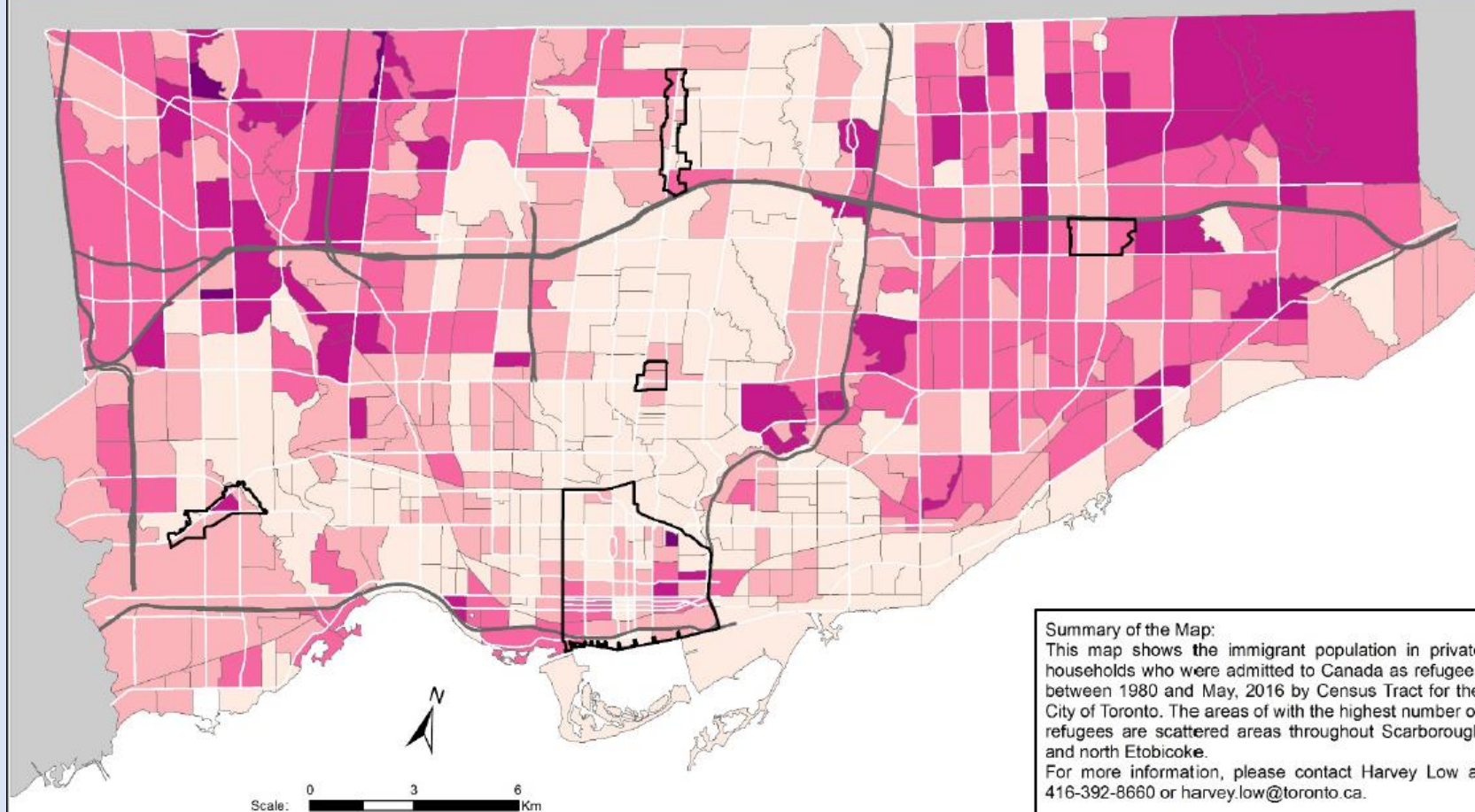
### Top 10 Countries, 2006



### Top 10 Countries, 2016



# Population of Immigrants Admitted as Refugees (1980-2016), Toronto 2016



**Summary of the Map:**  
 This map shows the immigrant population in private households who were admitted to Canada as refugees between 1980 and May, 2016 by Census Tract for the City of Toronto. The areas of with the highest number of refugees are scattered areas throughout Scarborough and north Etobicoke.  
 For more information, please contact Harvey Low at 416-392-8660 or [harvey.low@toronto.ca](mailto:harvey.low@toronto.ca).

## Legend

**Immigrant population in private households who landed between 1980 and May, 2016 - Refugees**

- 0 - 165
- 166 - 370
- 371 - 655
- 656 - 1,295
- 1,296 - 2,825

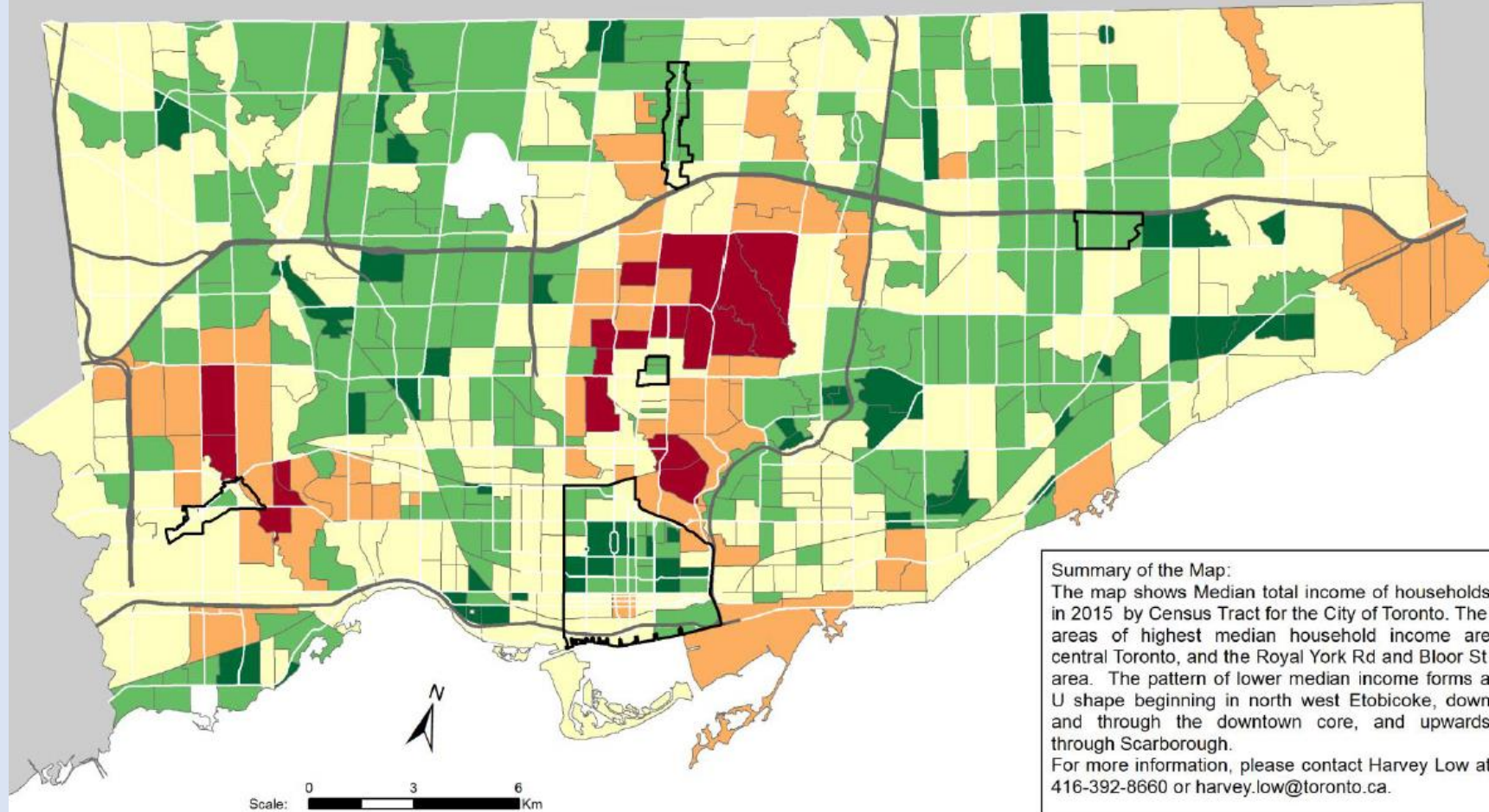
- Not available/ No data
- Downtown/Centres
- Expressway
- Major Arterial

Source: City of Toronto;  
 Statistics Canada 2016 Census.

Copyright © 2017 City of Toronto. All Rights Reserved.  
 Published: October 2017.  
 Version: 1.0 (future versions of this map may change)

Prepared by: Social Research and Analysis Unit.  
 Contact: [spar@toronto.ca](mailto:spar@toronto.ca).

# Income – Housing Costs



## Legend

### Median total income of households in 2015 (\$)

Dark Green	\$22,208 - \$45,000
Light Green	\$45,001 - \$65,829 <--Toronto Median
Yellow	\$65,830 - \$100,000
Orange	\$100,001 - \$150,000
Dark Red	\$150,001 - \$300,000

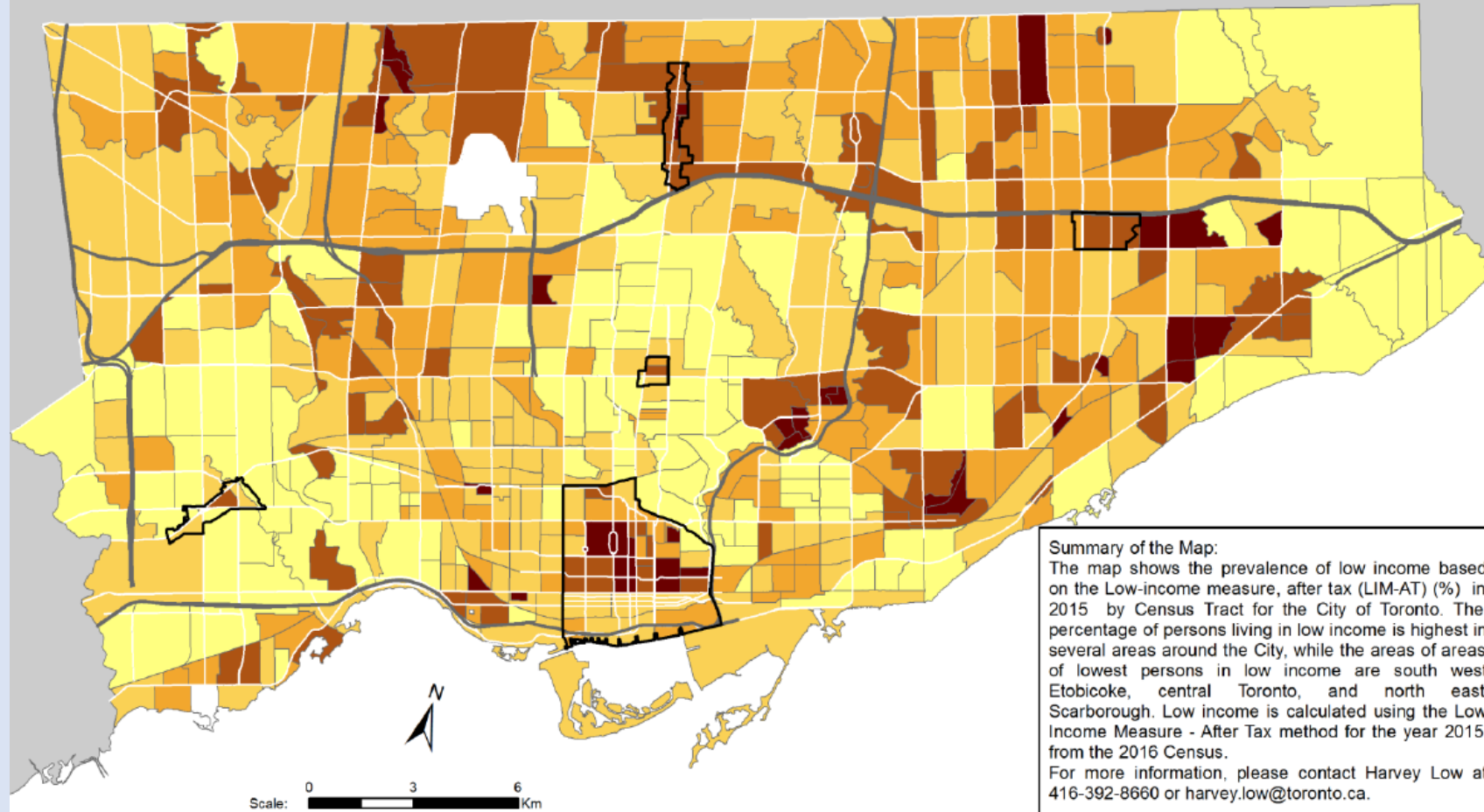
White box	Not available/ No data
Black outline	Downtown/Centres
Thick black line	Expressway
Thin black line	Major Arterial

Source: City of Toronto;  
Statistics Canada 2016 Census.

Copyright © 2017 City of Toronto. All Rights Reserved.  
Published: September 2017.  
Version: 2.0 (future versions of this map may change)

Prepared by: Social Research and Analysis Unit.  
Contact: [spar@toronto.ca](mailto:spar@toronto.ca).





## Legend

Prevalence of low income based on the Low-income measure, after tax (LIM-AT) (%)

- 3.4% - 11.7%
- 11.8% - 18.2%
- 18.3% - 26.3%
- 26.4% - 37%
- 37.1% - 65.6%

- Not available/ No data
- Downtown/Centres
- Expressway
- Major Arterial

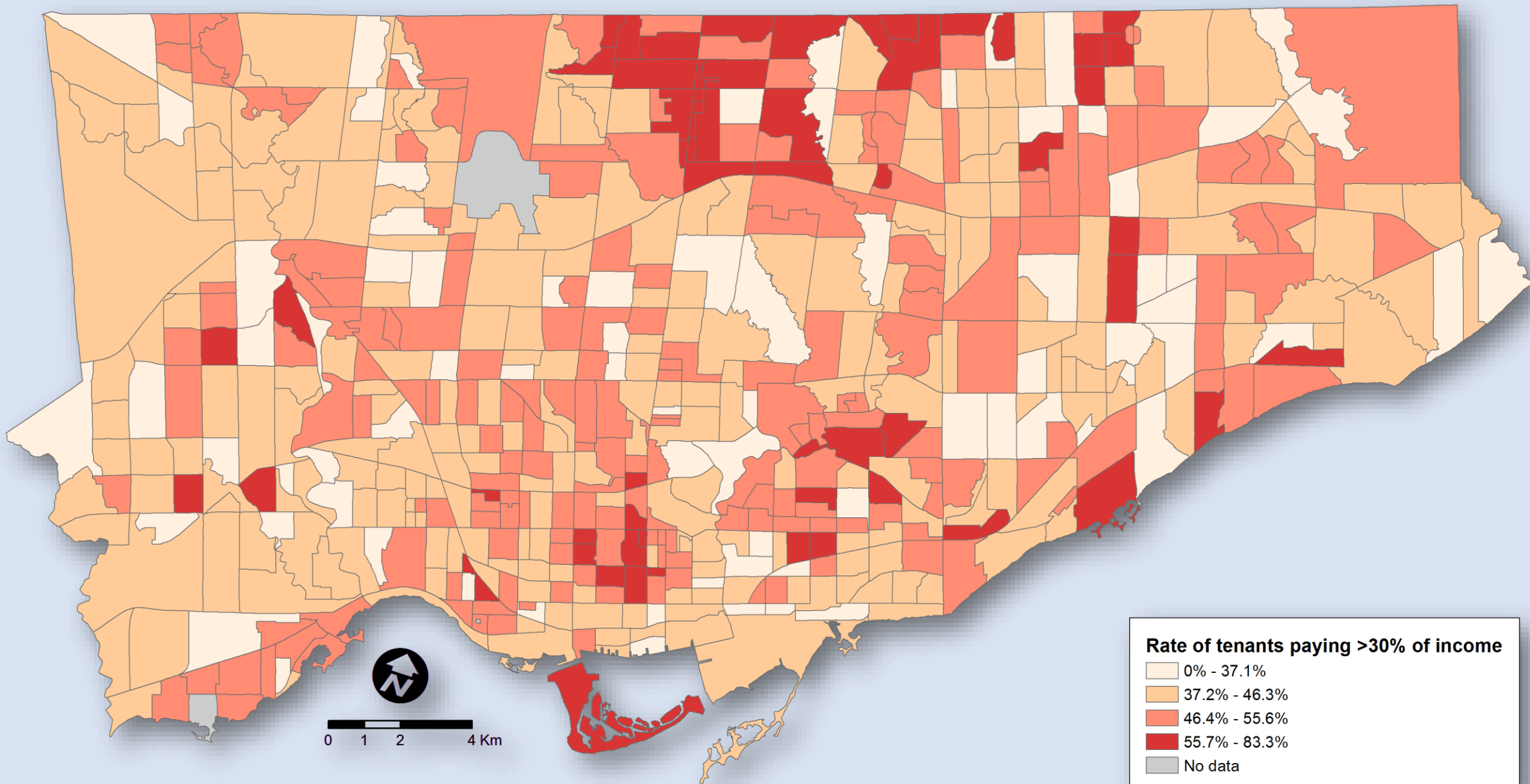
Source: City of Toronto;  
Statistics Canada 2016 Census.

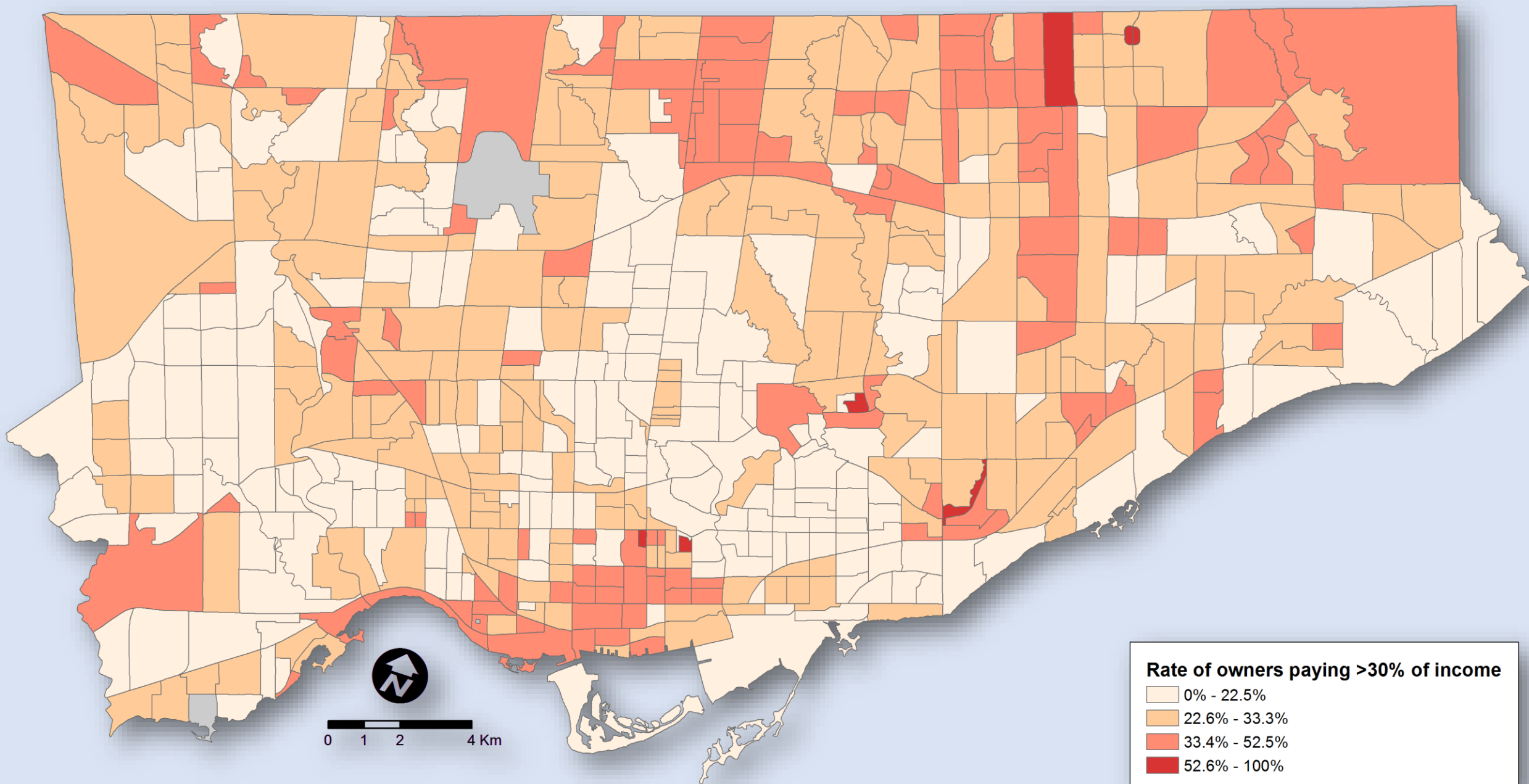
Copyright © 2017 City of Toronto. All Rights Reserved.  
Published: September 2017.  
Version: 1.1 (future versions of this map may change)

Prepared by: Social Research and Analysis Unit.  
Contact: [spar@toronto.ca](mailto:spar@toronto.ca).

# Housing indicators

Tenants	Owners
<b>\$1,242</b> average monthly household shelter cost	<b>\$1,682</b> average monthly household shelter cost
<b>46.8%</b> of households spending 30% or more of household total income on shelter costs	<b>27.4%</b> of households spending 30% or more of household total income on shelter costs
<b>15.1%</b> of households live in subsidized housing	<b>57.5%</b> of households have a mortgage
	<b>\$ 754,015</b> average value of owned dwelling







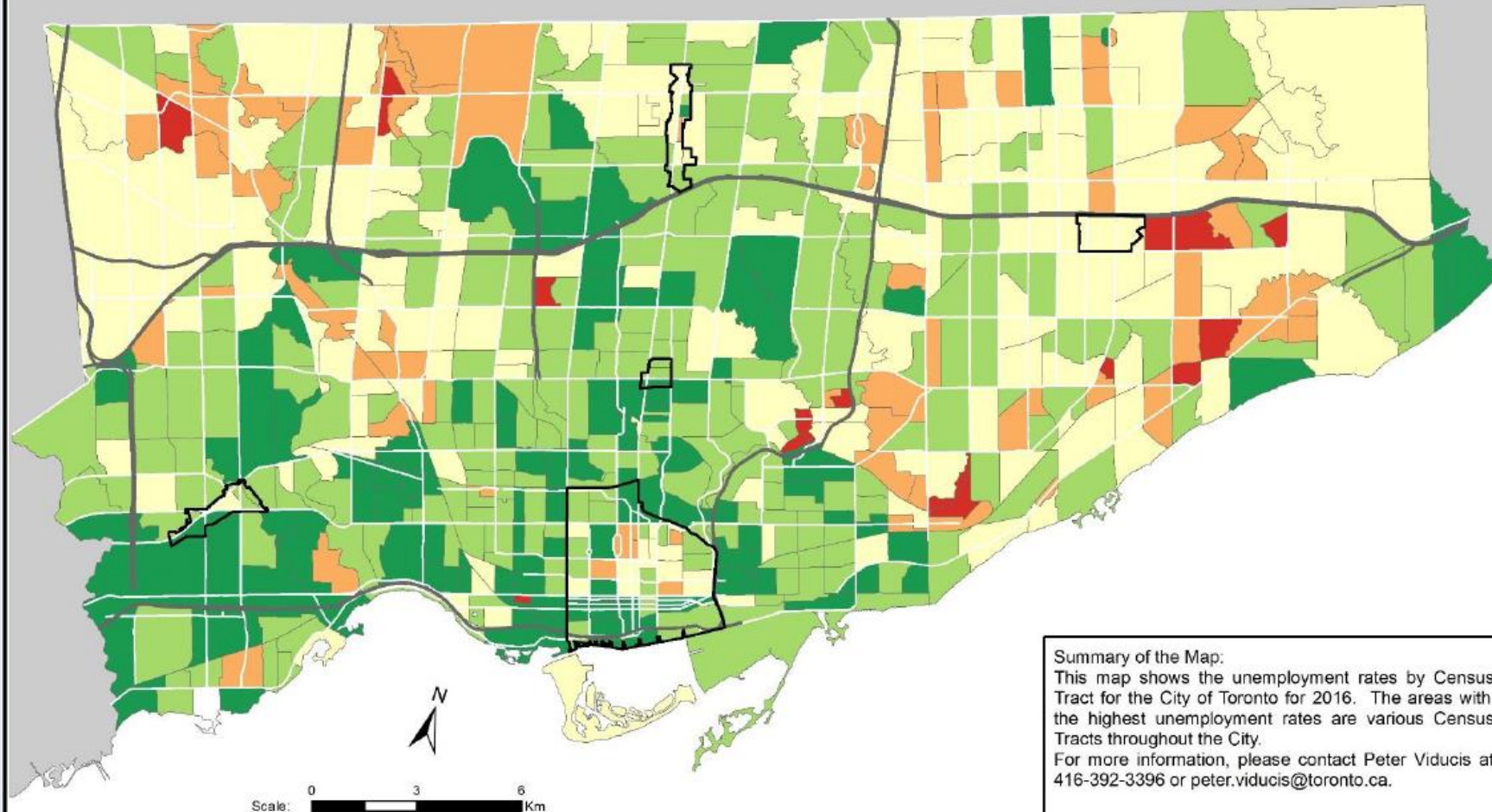
# Labour Market

# Labour Force Status



Unemployment Rate	Participation Rate
8.2%	64.7%
7.6%	65.0%
10.7%	63.5%

# Unemployment Rates, Toronto 2016



**Summary of the Map:**  
This map shows the unemployment rates by Census Tract for the City of Toronto for 2016. The areas with the highest unemployment rates are various Census Tracts throughout the City.  
For more information, please contact Peter Viducis at 416-392-3396 or [peter.viducis@toronto.ca](mailto:peter.viducis@toronto.ca).

## Legend

### Unemployment Rate

- 0% - 6.1%
- 6.2% - 8.4%
- 8.5% - 10.8%
- 10.9% - 14.5%
- 14.6% - 19.7%

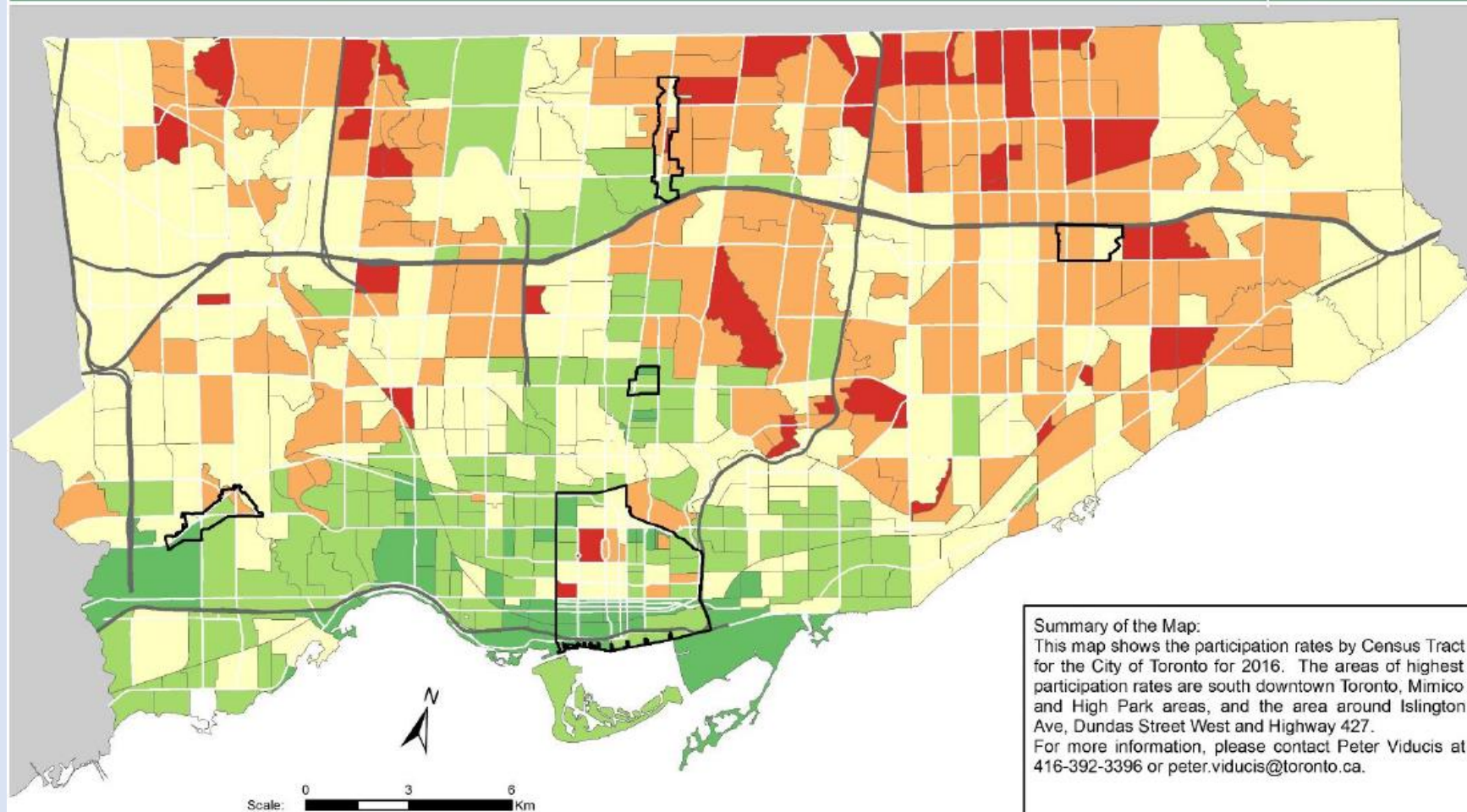
- Not available/ No data
- Downtown/Centres
- Expressway
- Major Arterial

This map shows the unemployment rates by Census Tract for the City of Toronto for 2016.

Source: City of Toronto;  
Statistics Canada 2016 Census.

Copyright © 2017 City of Toronto. All Rights Reserved.  
Published: November 2017.  
Version: 1.0 (future versions of this map may change)

Prepared by: Social Research and Analysis Unit.  
Contact: [spar@toronto.ca](mailto:spar@toronto.ca).



## Legend

### Participation Rate

9.3% - 54.1%
54.2% - 61.2%
61.3% - 67.8%
67.9% - 75.7%
75.8% - 93.1%

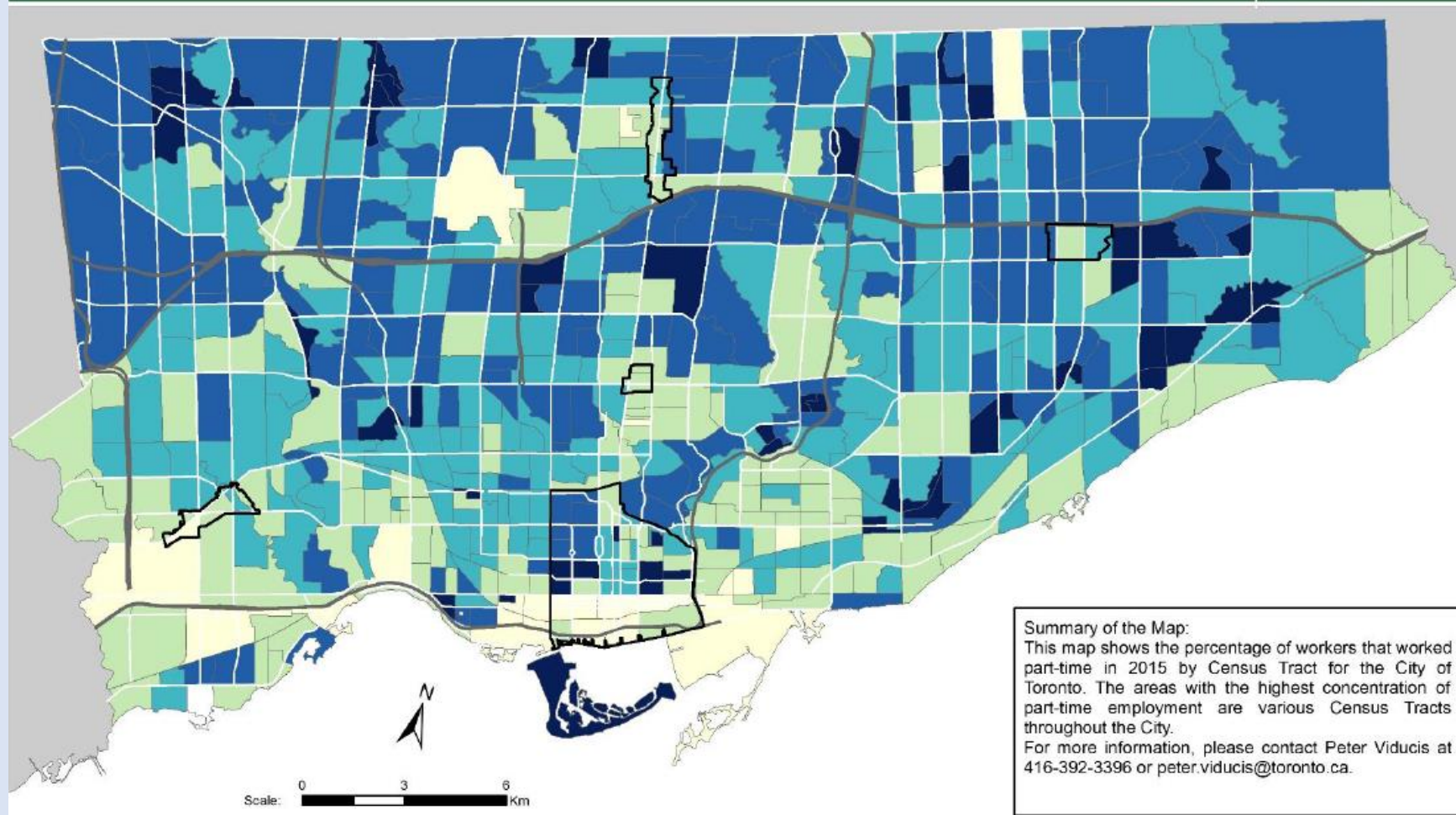
Not available/ No data
Downtown/Centres
Expressway
Major Arterial

Source: City of Toronto;  
Statistics Canada 2016 Census.

Copyright © 2017 City of Toronto. All Rights Reserved.  
Published: November 2017.  
Version: 1.0 (future versions of this map may change)

Prepared by: Social Research and Analysis Unit.  
Contact: [spar@toronto.ca](mailto:spar@toronto.ca).





## Legend

### Percentage of Workers that Worked Part-Time

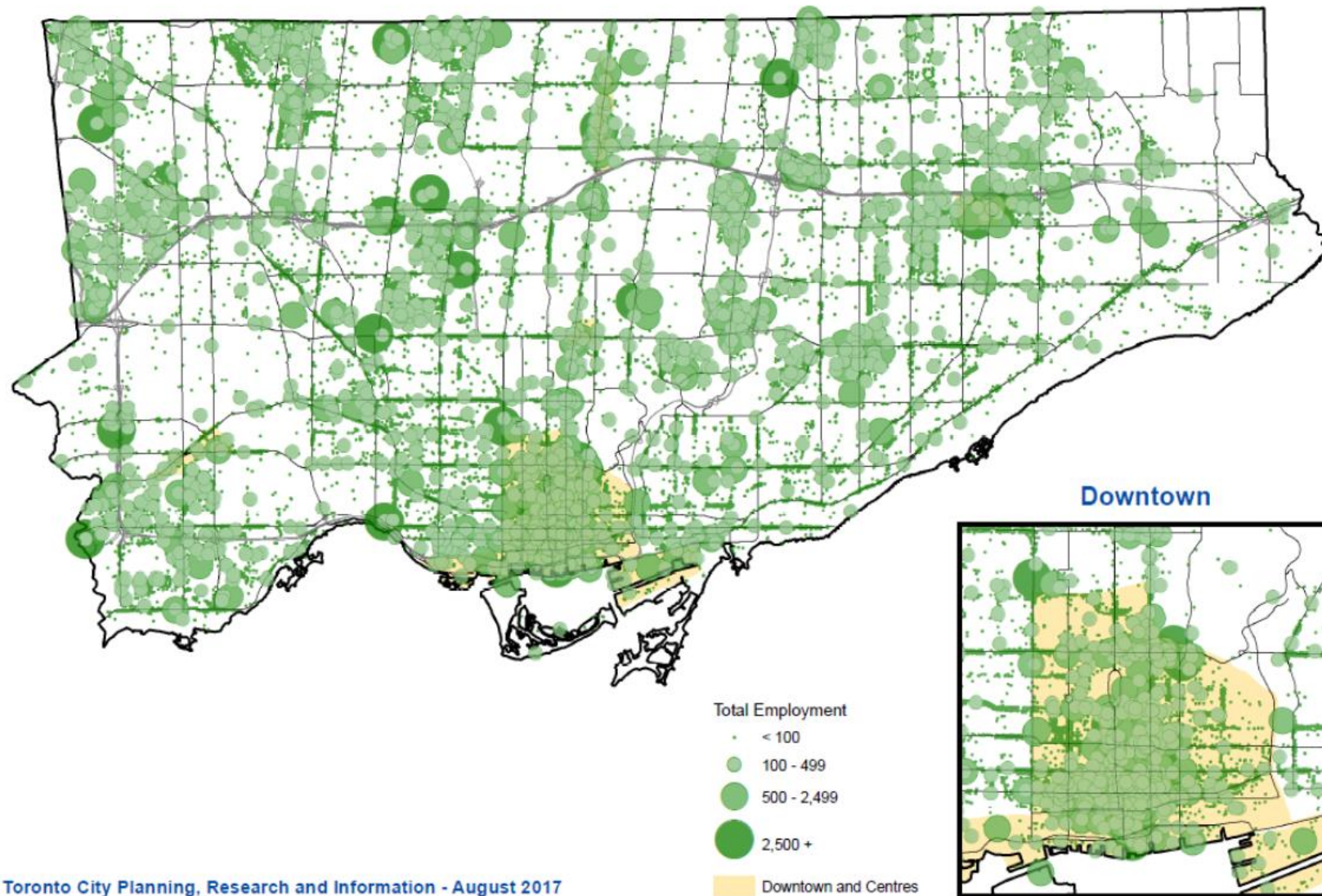
- 0% - 40.7%
- 40.8% - 47.8%
- 47.9% - 52.6%
- 52.7% - 58.1%
- 58.2% - 74.8%

- Not available/ No data
- Downtown/Centres
- Expressway
- Major Arterial

Source: City of Toronto;  
Statistics Canada 2016 Census.

Copyright © 2017 City of Toronto. All Rights Reserved.  
Published: November 2017.  
Version: 1.0 (future versions of this map may change)

Prepared by: Social Research and Analysis Unit.  
Contact: [spar@toronto.ca](mailto:spar@toronto.ca).



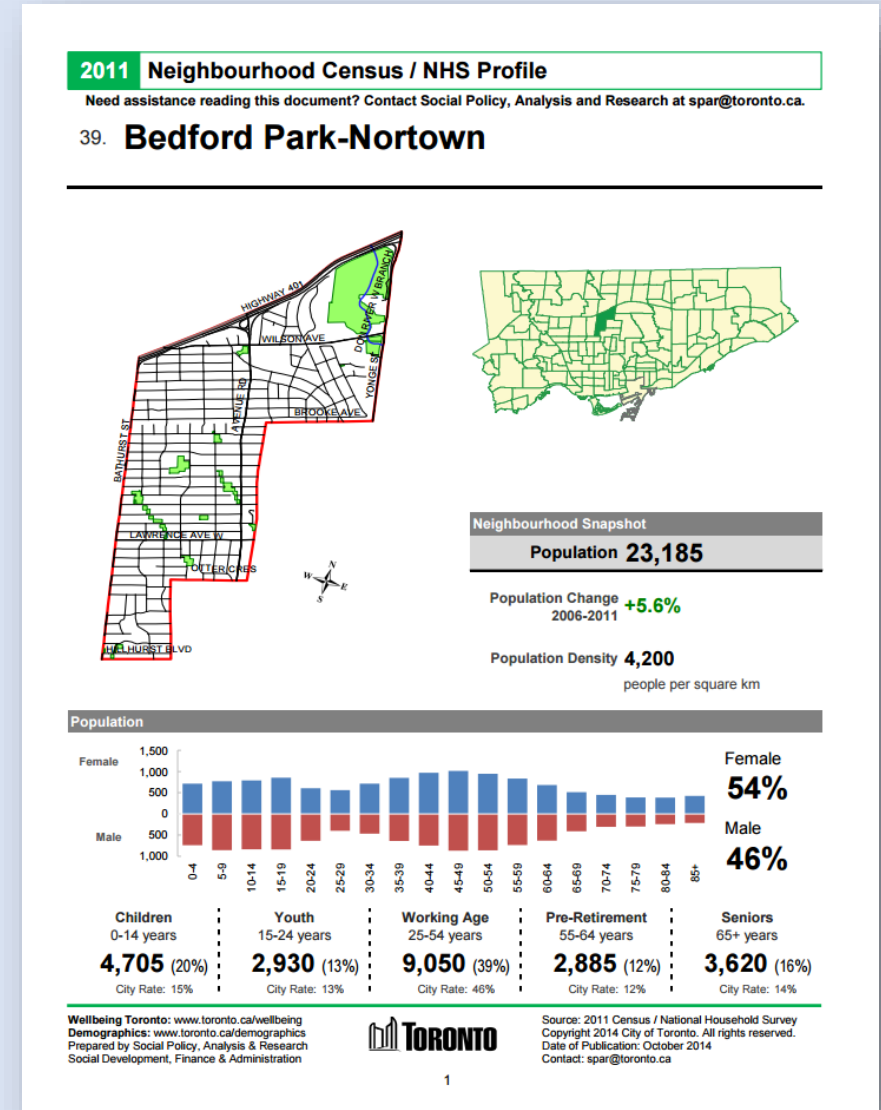
Toronto City Planning, Research and Information - August 2017



# RESOURCES

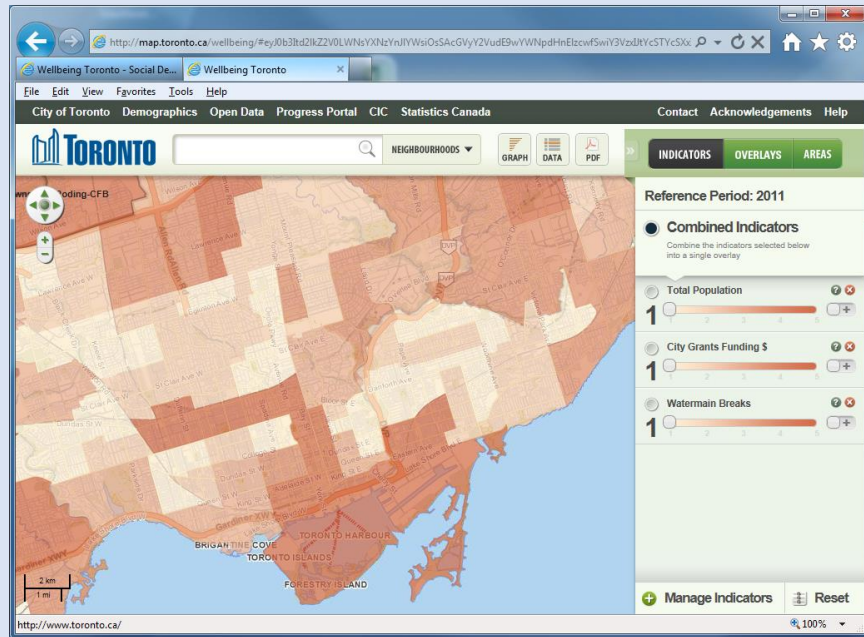
# Neighbourhood Profiles

- Neighbourhood level profiles illustrate local trends in key Census data.
- Mostly key indicators and charts, with additional data available electronically.
- Draft versions will be prepared following the September 13 income release.



# Demographic Information

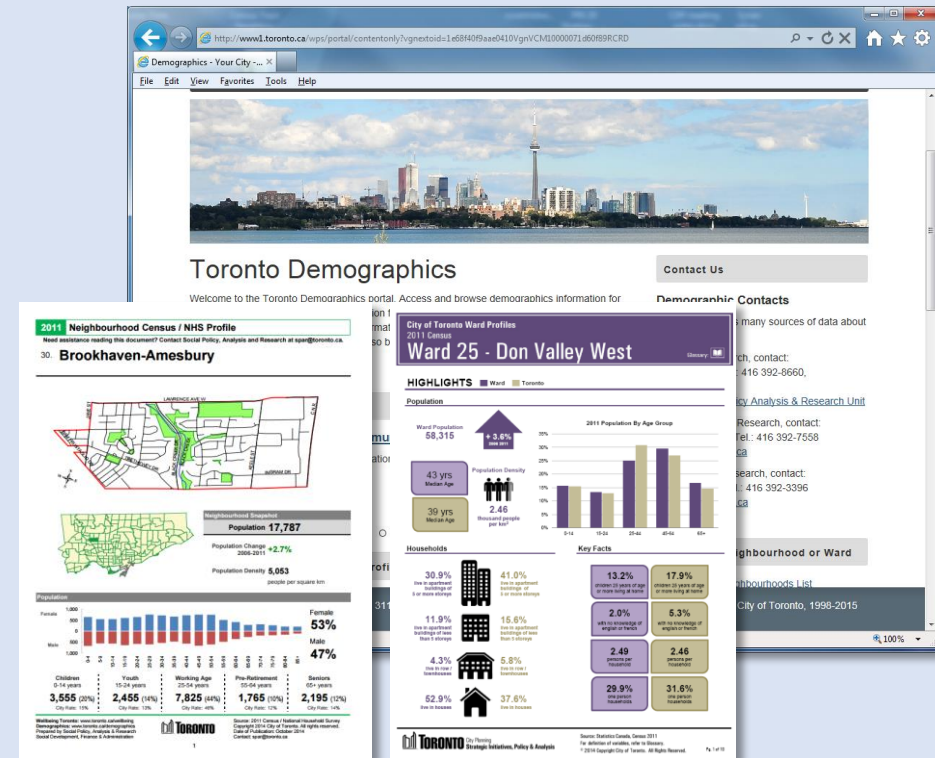
[toronto.ca/wellbeing](http://toronto.ca/wellbeing)



**WellbeingToronto**

An interactive mapping tool for Toronto's neighbourhoods.

[toronto.ca/demographics](http://toronto.ca/demographics)



A portal for Toronto's demographic data, including Census Reports.

# Contact Information

## Harvey Low

Manager, Social Research & Information Management,  
Social Policy, Analysis & Research Section,  
Social Development, Finance & Administration Division  
phone: 416-392-8660

email: [harvey.low@toronto.ca](mailto:harvey.low@toronto.ca)

General inquiries email [spar@toronto.ca](mailto:spar@toronto.ca)