



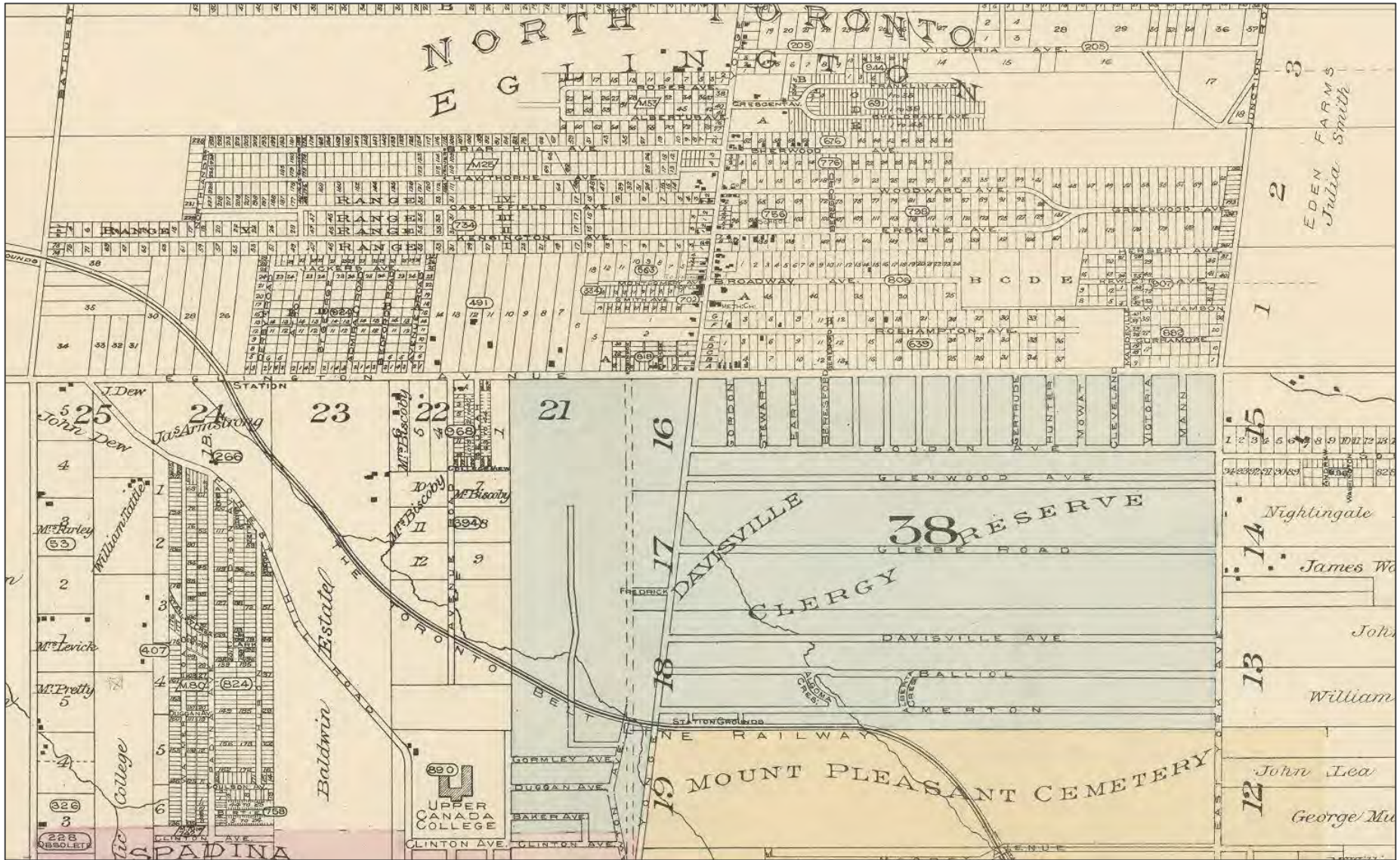
MIDTOWN
Parks and Public Realm

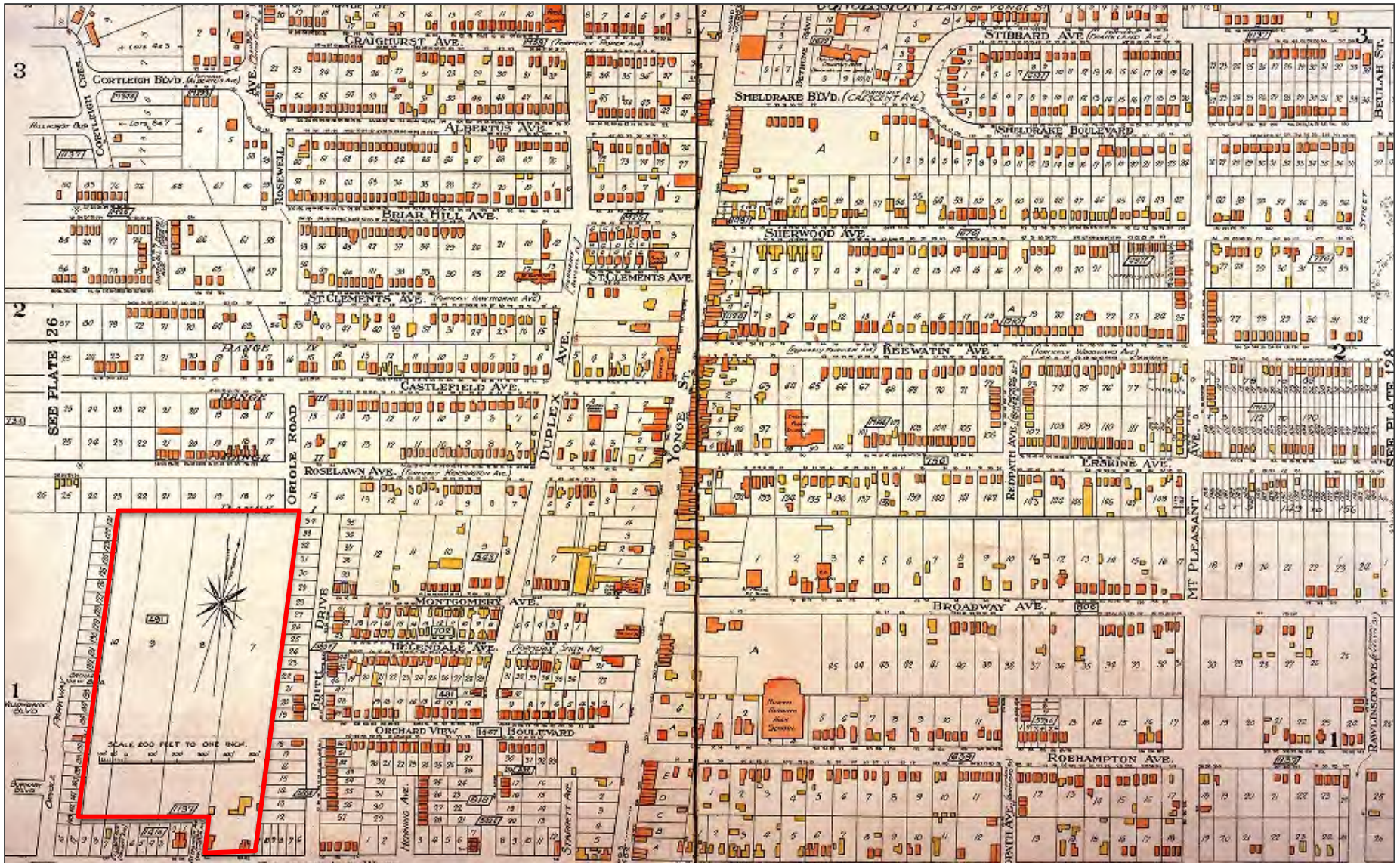
Midtown Open House
February 10, 2018

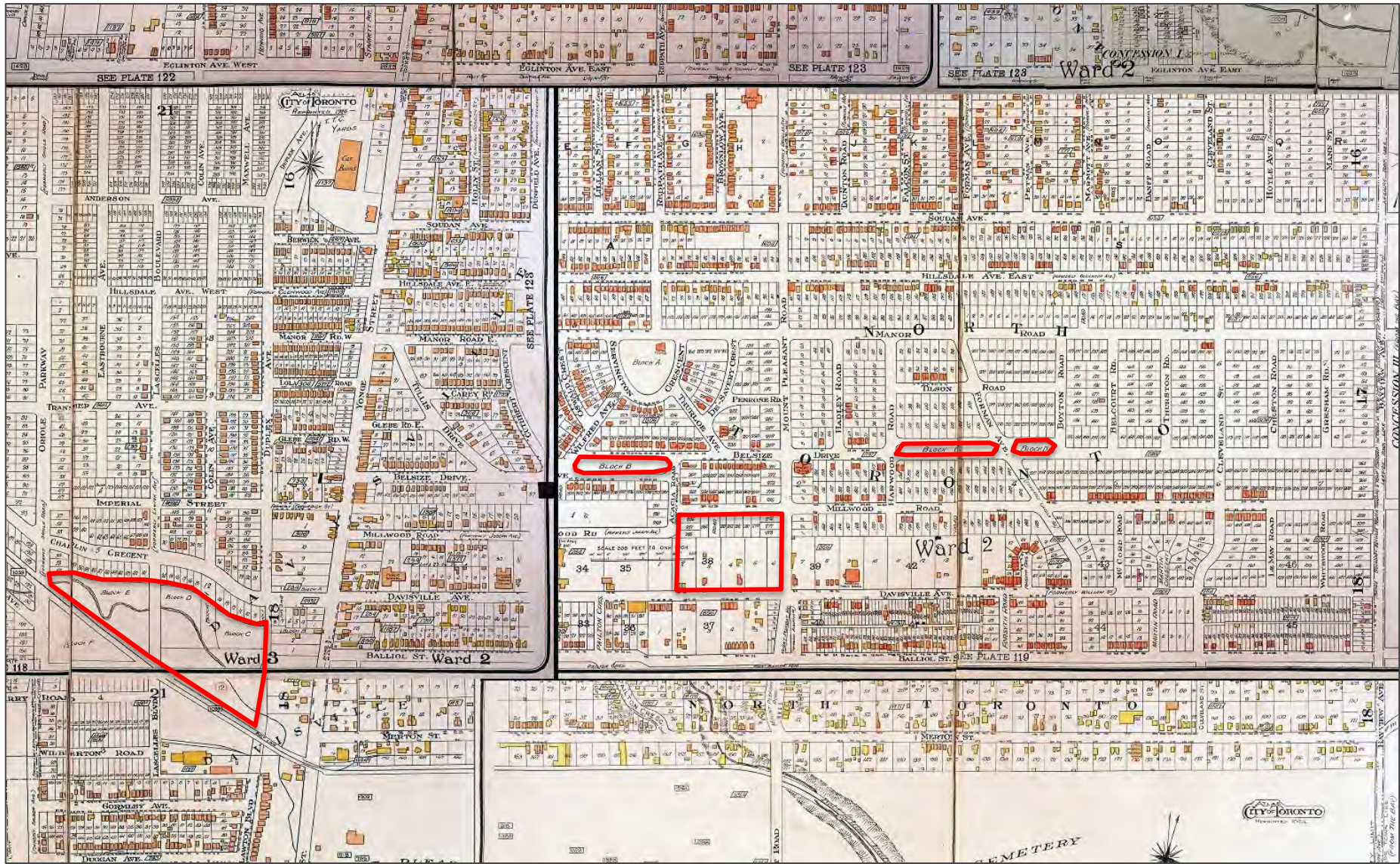


- Midtown's Evolution
- Starting Points for Midtown's Next Evolution
- Parks and Public Realm Plans
- Next Steps and Workshop Exercise

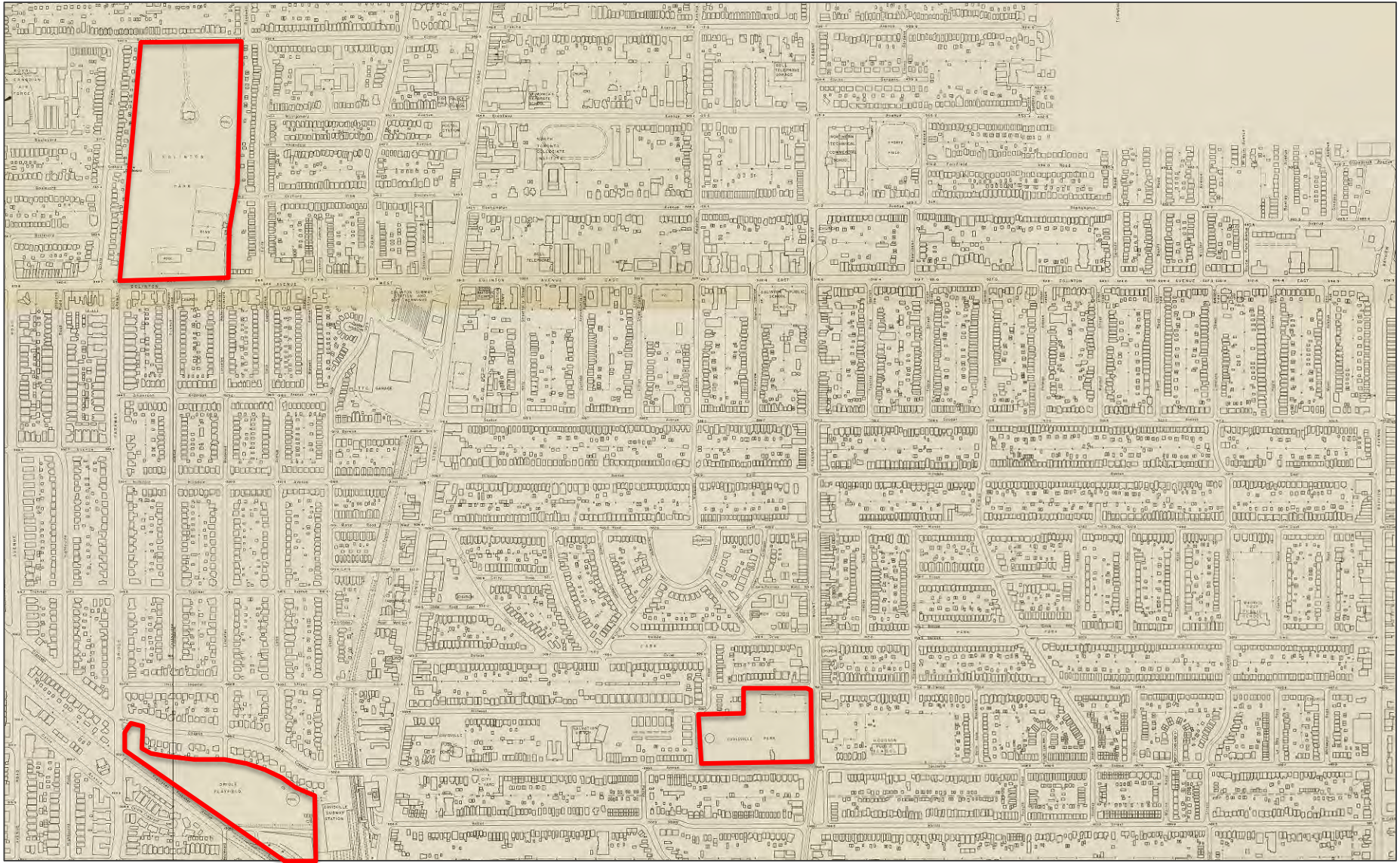
Midtown's Evolution



















Starting Points for Midtown's Next Evolution



- City-wide Parkland Strategy
- Section 42 Review (Parkland Dedication)
- Parks and Recreation Facilities Master Plan





Existing Parks + Open Spaces

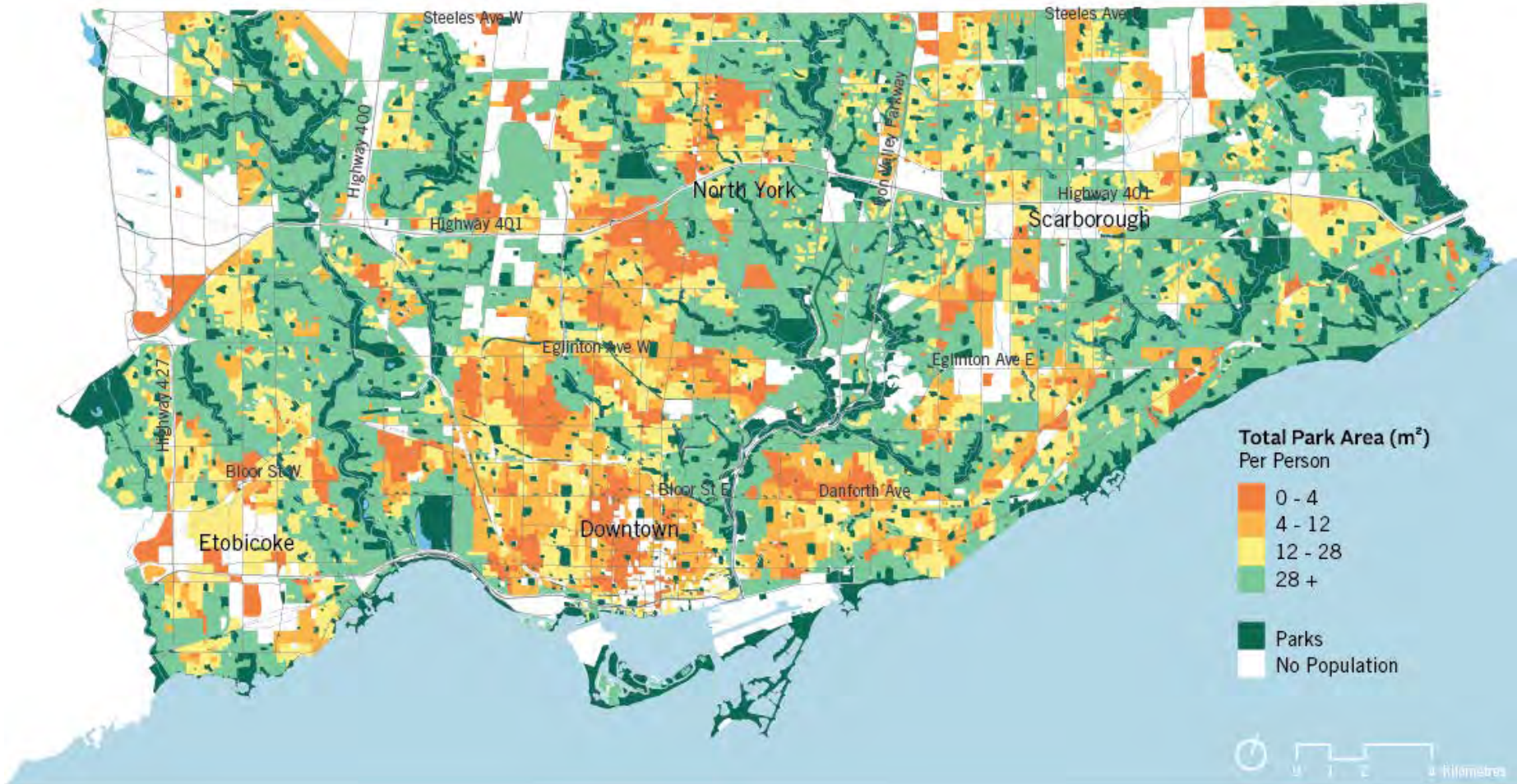




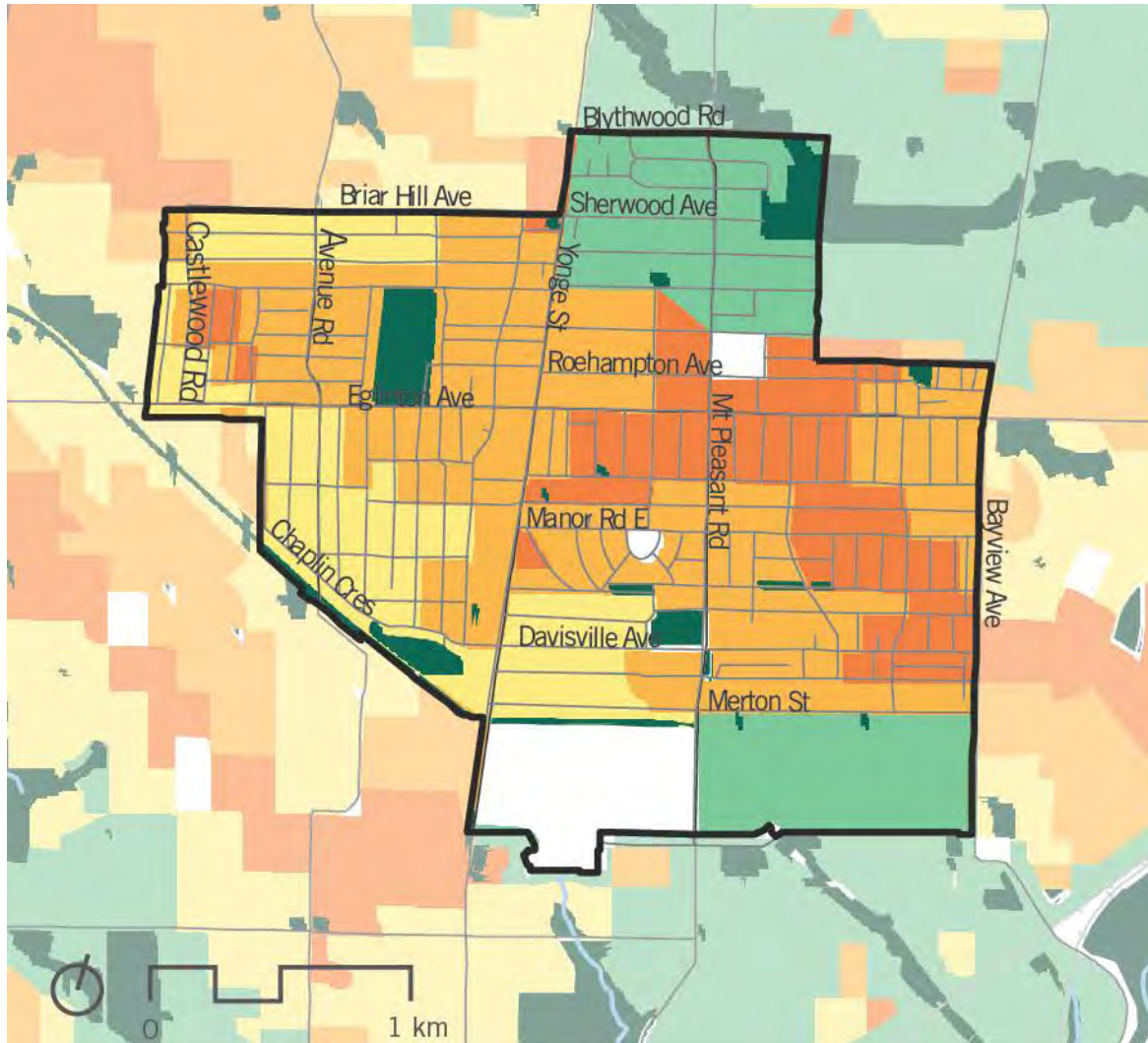
Midtown's Population 2016:

66,000





Midtown's Parkland Provision



Total Park Area (m²)
Per Resident

- 0 - 4
- 4 - 12
- 12 - 28
- 28 +

- Existing Parks
- No Population

Based on walking-distances and amount of parkland availability in the area



Midtown's Population 2016:

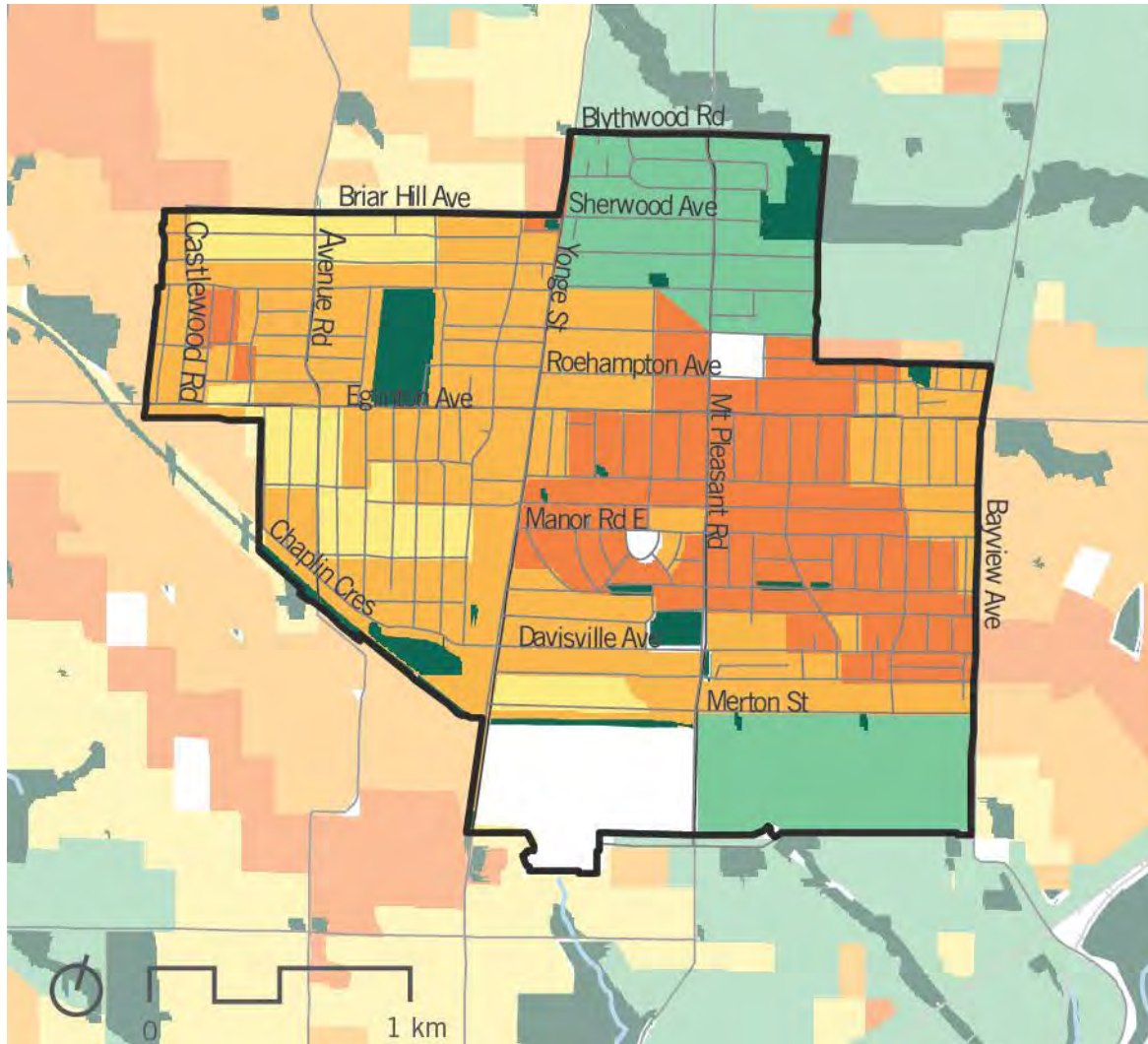
66,000



Midtown's Potential Population 2051:

127,000+





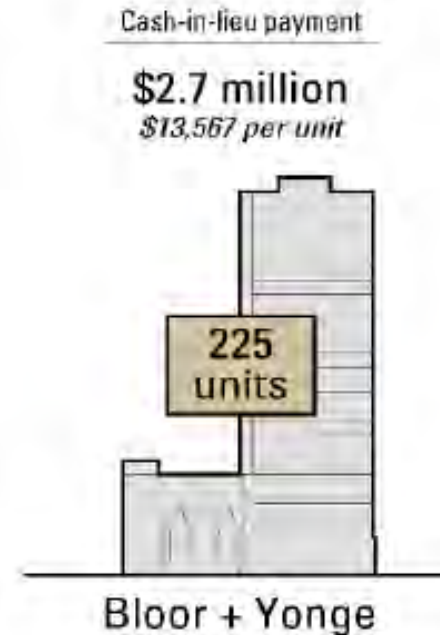
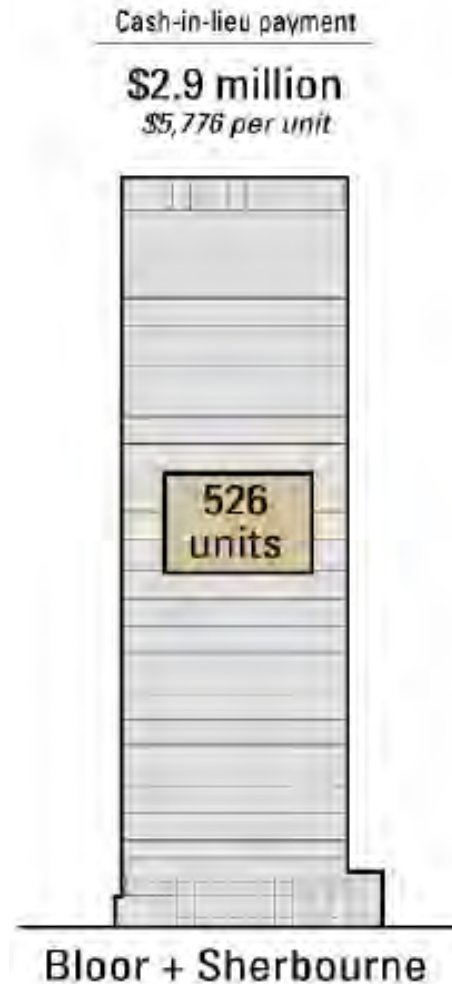
Total Park Area (m²)
Per Resident

- 0 - 4
- 4 - 12
- 12 - 28
- 28 +

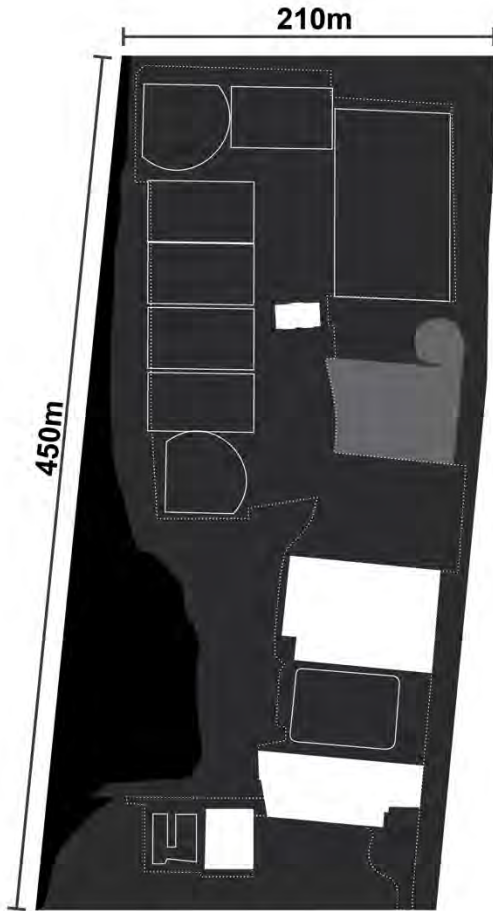
- Existing Parks
- No Population

Based on walking-distances, amount of parkland availability in the area and city-wide population estimates to 2032

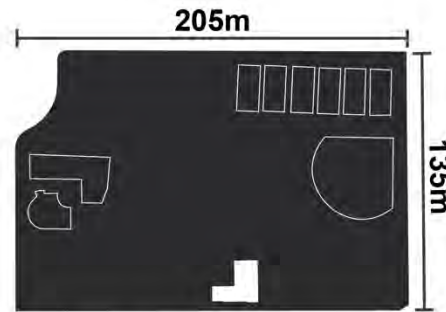
- Parkland Dedication (Section 42 of Planning Act) – 10% of site area
- Dense, infill environment = limited vacant land
- High cost of land in high-growth areas
- Limited City-owned sites available



Types of Parks and Open Spaces - Size



Eglinton Park
8.6 ha



June Rowlands Park
2.65 ha



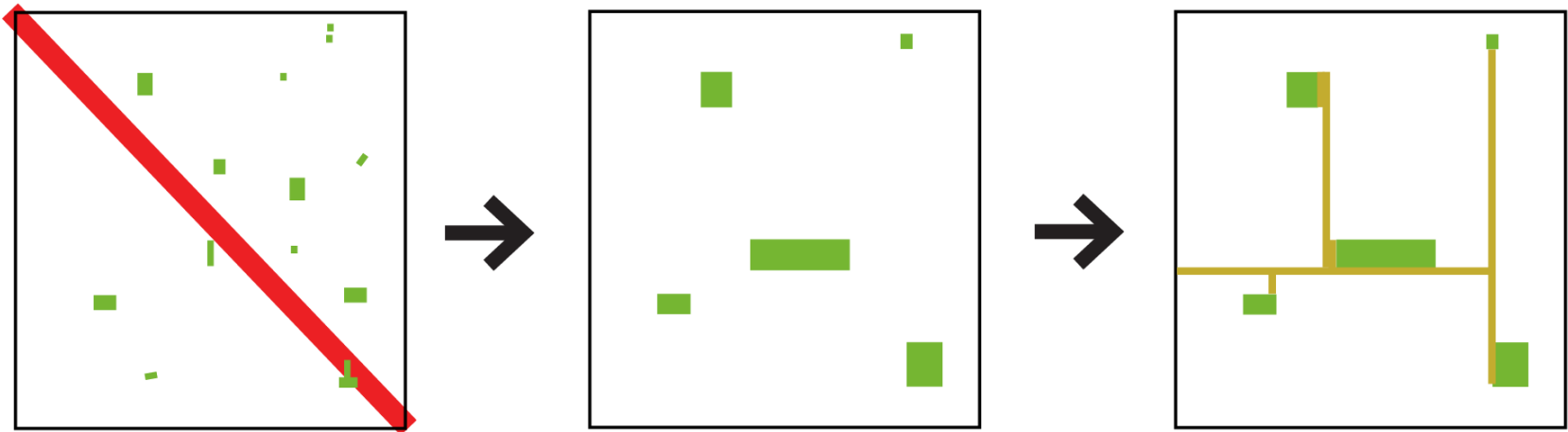
0.5-1ha



Redpath Parkette
0.28ha



Dunfield Park
0.1 ha



Consolidation of parkland and **connectivity** between parks creates an open space network with improved programming potential

Types of Parks and Open Spaces - Function



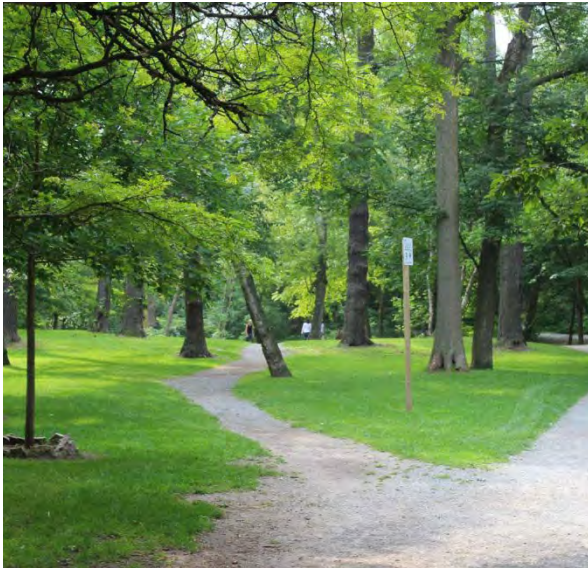
Passive Parks/Open Spaces



Active Parks



Destination Parks



Nature Parks



Local Parks



Linear Parks

Midtown's Parks and Public Realm Plans



1. **Acquire + Expand**
2. **Enhance**
3. **Share**
4. **Connect**

1.Acquire + Expand



Key Proposed Policies:

- New parkland will be provided **to support and be concurrent with growth.**
- The City will pursue **opportunities arising from development** to secure new parkland
- **Criteria** identified to inform parkland priority improvements (e.g. located on prominent sites including sites on corners and locations which terminate street views)
- **Multiple parkland dedications assembled into a larger park** will be encouraged
- Where on-site parkland dedication is not technically feasible, a nearby **off-site dedication** may be a substitute
- **Large sites** adjacent to Park Street Loop to provide **on site parkland** adjacent to the Loop





1. Acquire + Expand





1. Acquire + Expand





1. Acquire + Expand





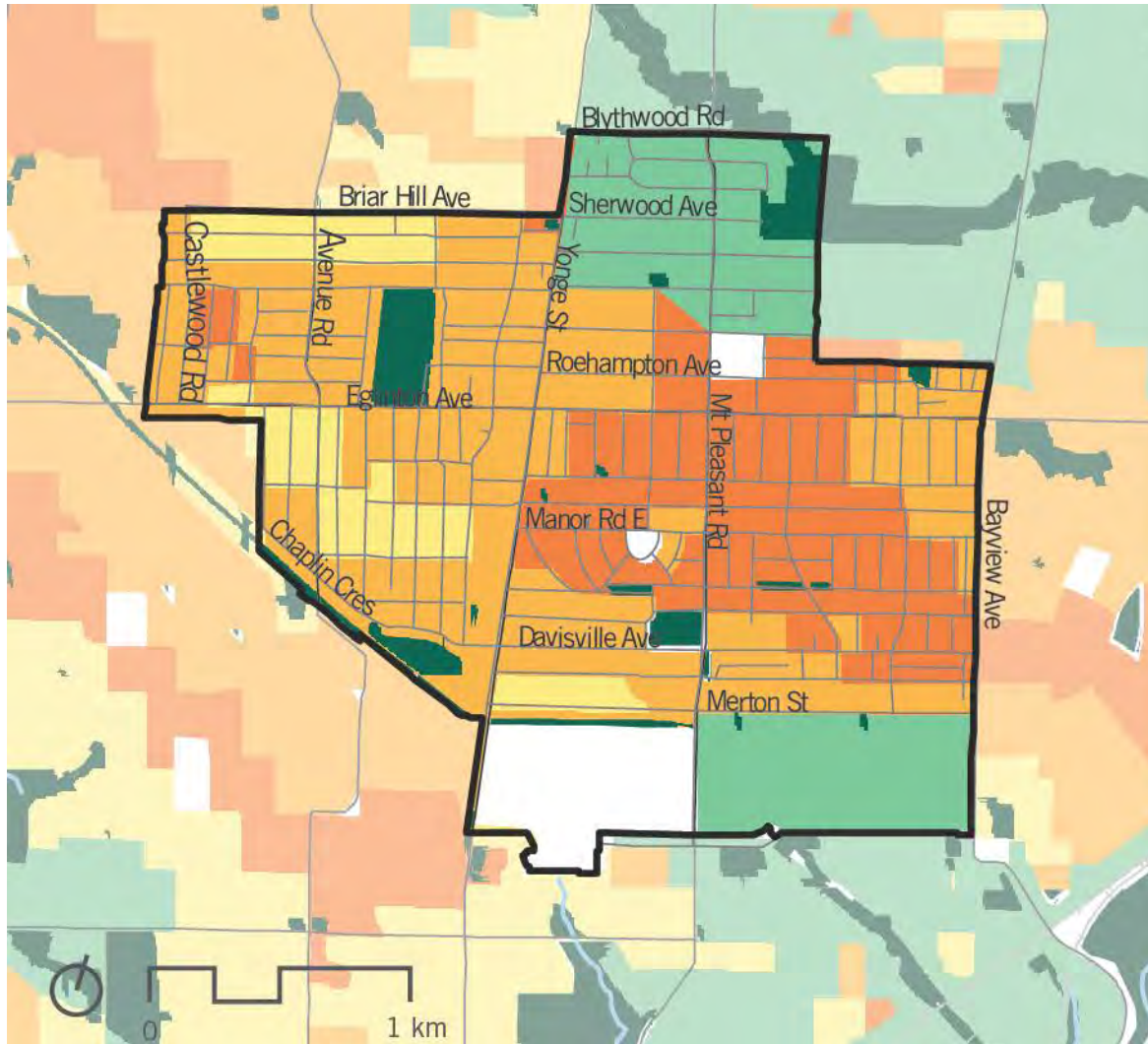
1. Acquire + Expand





1. Acquire + Expand





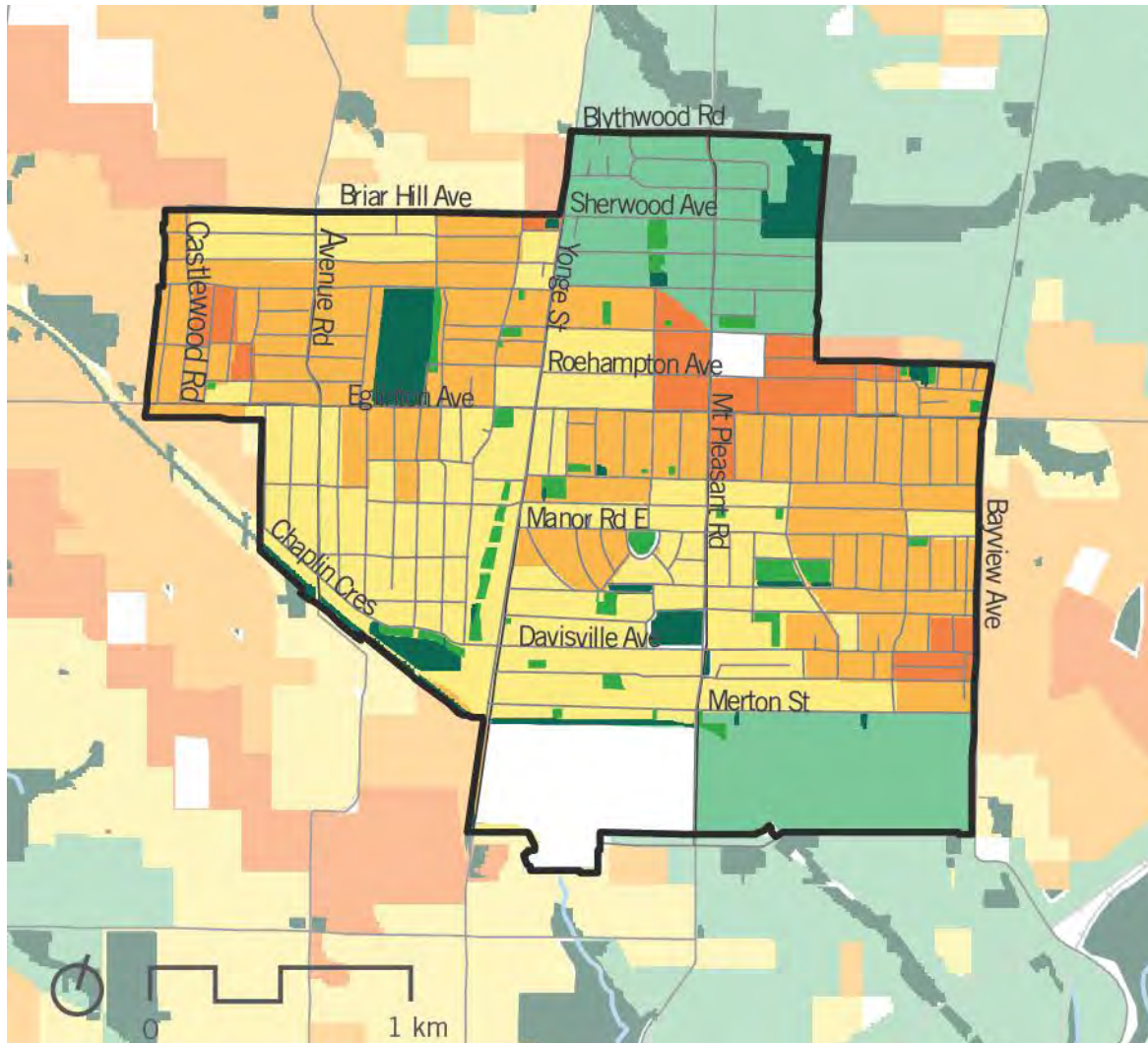
Total Park Area (m²)
Per Resident

- 0 - 4
- 4 - 12
- 12 - 28
- 28 +

- Existing Parks
- No Population

Based on walking-distances, amount of parkland availability in the area and city-wide population estimates to 2032

Midtown's Parkland Provision – 2032 with New and Expanded Parks



Total Park Area (m²)
Per Resident

- 0 - 4
- 4 - 12
- 12 - 28
- 28 +

- Proposed Parks
- Existing Parks
- No Population

Based on walking-distances, amount of parkland availability in the area and city-wide population estimates to 2032. Proposed parks are conceptually shown and based on Parks and Open Space Network Plan

2. Enhance



Before



After



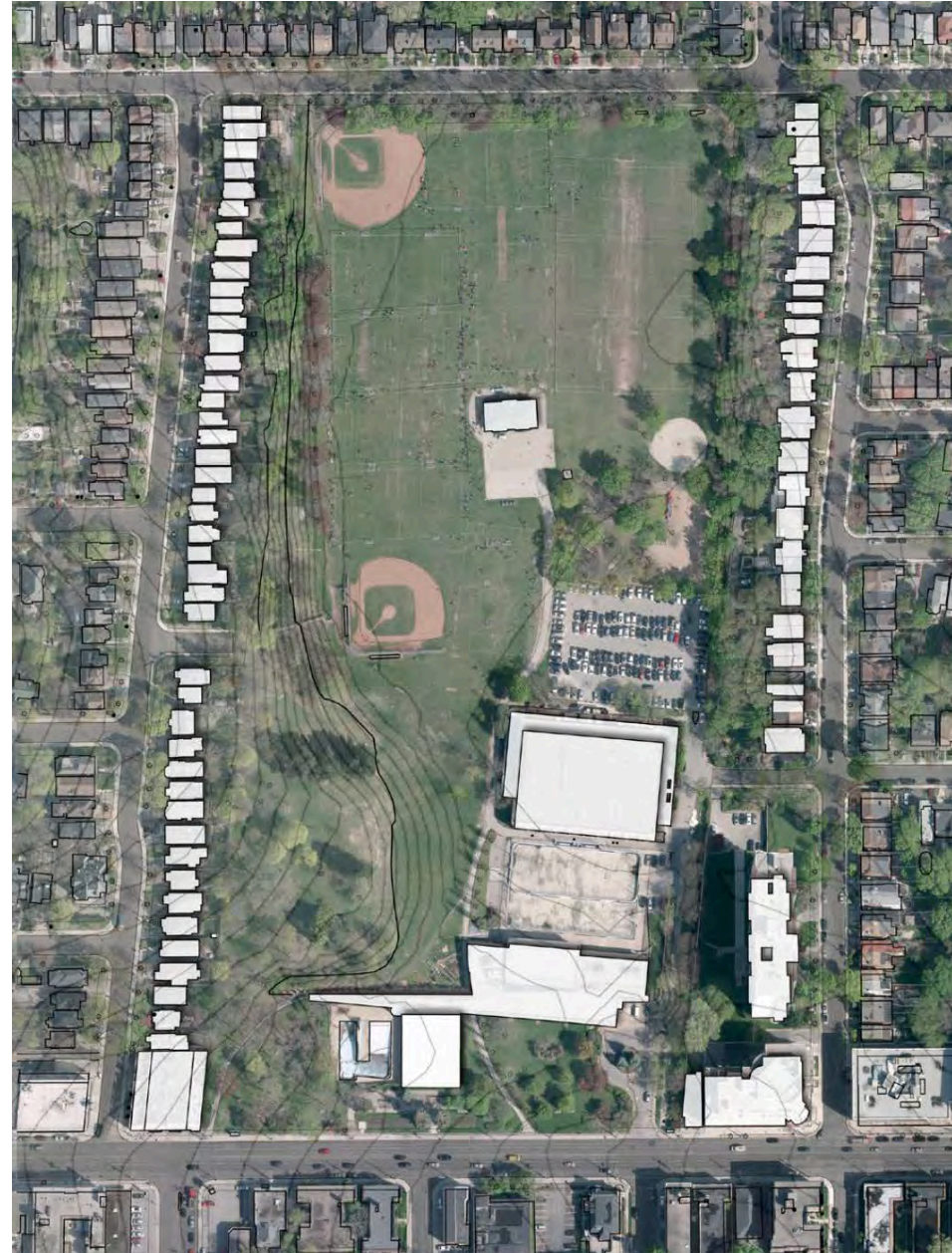
Key Proposed Policies:

- Existing parks will be improved over time through **expansion** and **maximizing their street frontage** to increase prominence, accessibility, and visibility
- The City will examine opportunities to enhance infrastructure and programming of existing parks including providing **additional seating** for passive activities, **installing new and renewed recreation facilities**, providing other facilities such as **public washrooms** and drinking water stations; and **accommodating special events**





- Determine a preferred concept plan for the park, incorporating existing and proposed park amenities
- Introduce amenities that serve non-recreational needs and create new connections to and through the park
- Improve the design of the park interface to enhance wayfinding
- Be based on input from the public, stakeholders and City staff



3. Share



Key Proposed Policies:

- Support a **community-based** park planning and design process, including collaboration with **Indigenous communities**
- **Preserve schoolyards** and work with local school boards to pursue community access through the development of **shared-use spaces and facilities**
- Work with **public agencies and private property owners** to establish partnerships and agreements to supplement parkland (e.g. through **publicly accessible privately-owned spaces** - POPS)

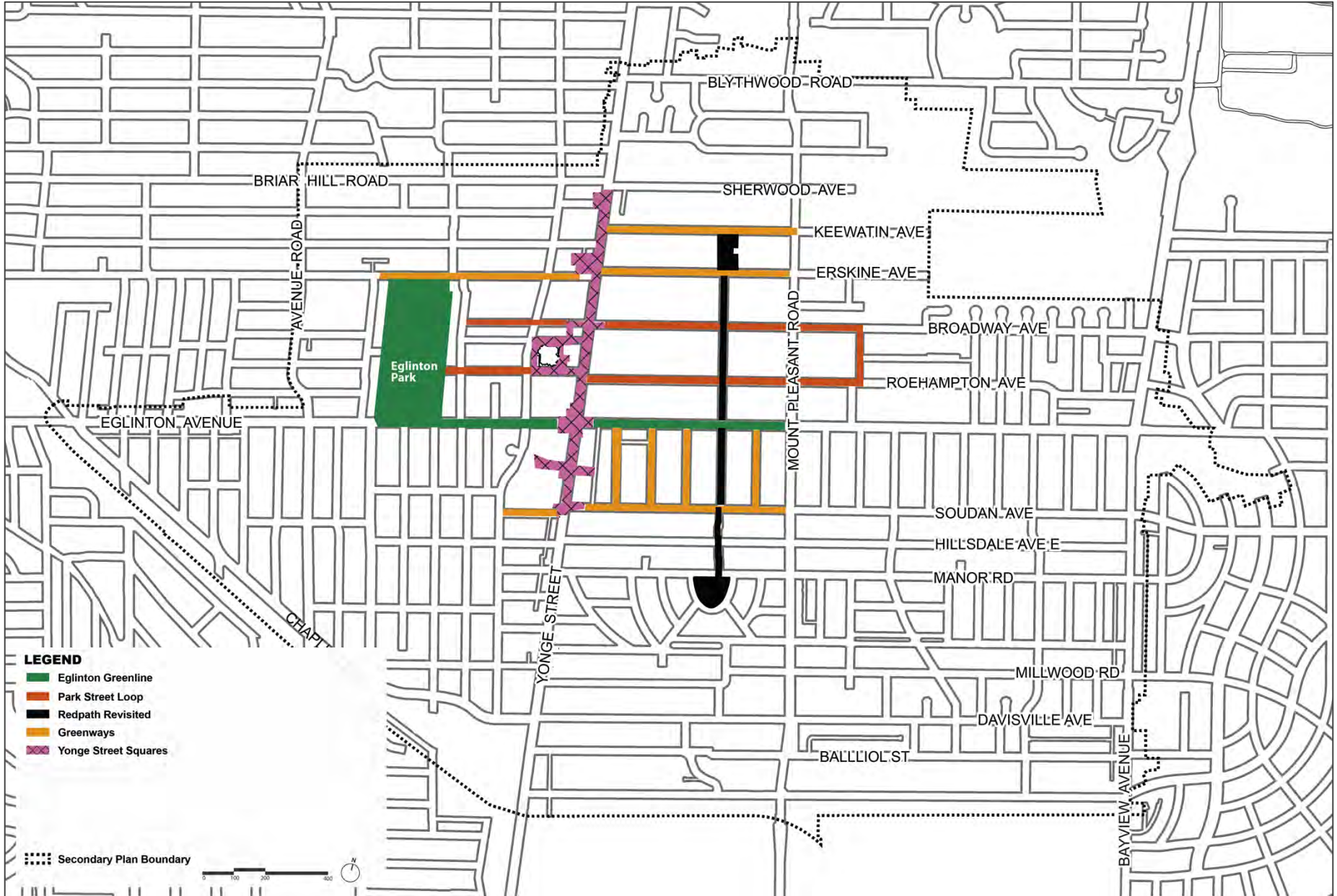


4. Connect

Midtown in Focus: Parks, Open Space and Streetscape Plan (2014)



1. Eglinton Green Line
2. Yonge Street Squares
3. Park Street Loop
4. Greenways
5. Redpath Revisited



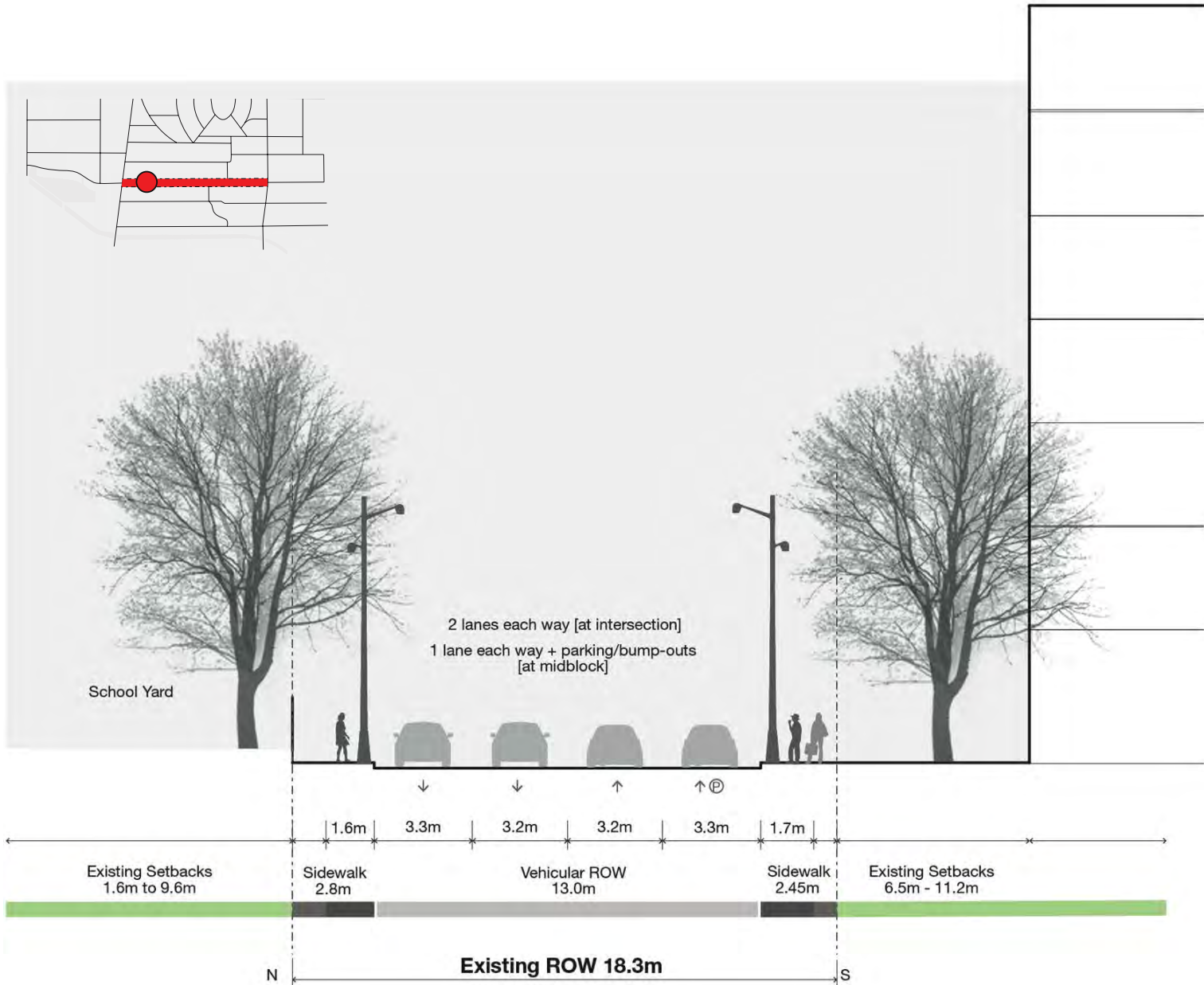
- LEGEND**
- Eglinton Greenline
 - Park Street Loop
 - Redpath Revisited
 - Greenways
 - Yonge Street Squares

Secondary Plan Boundary



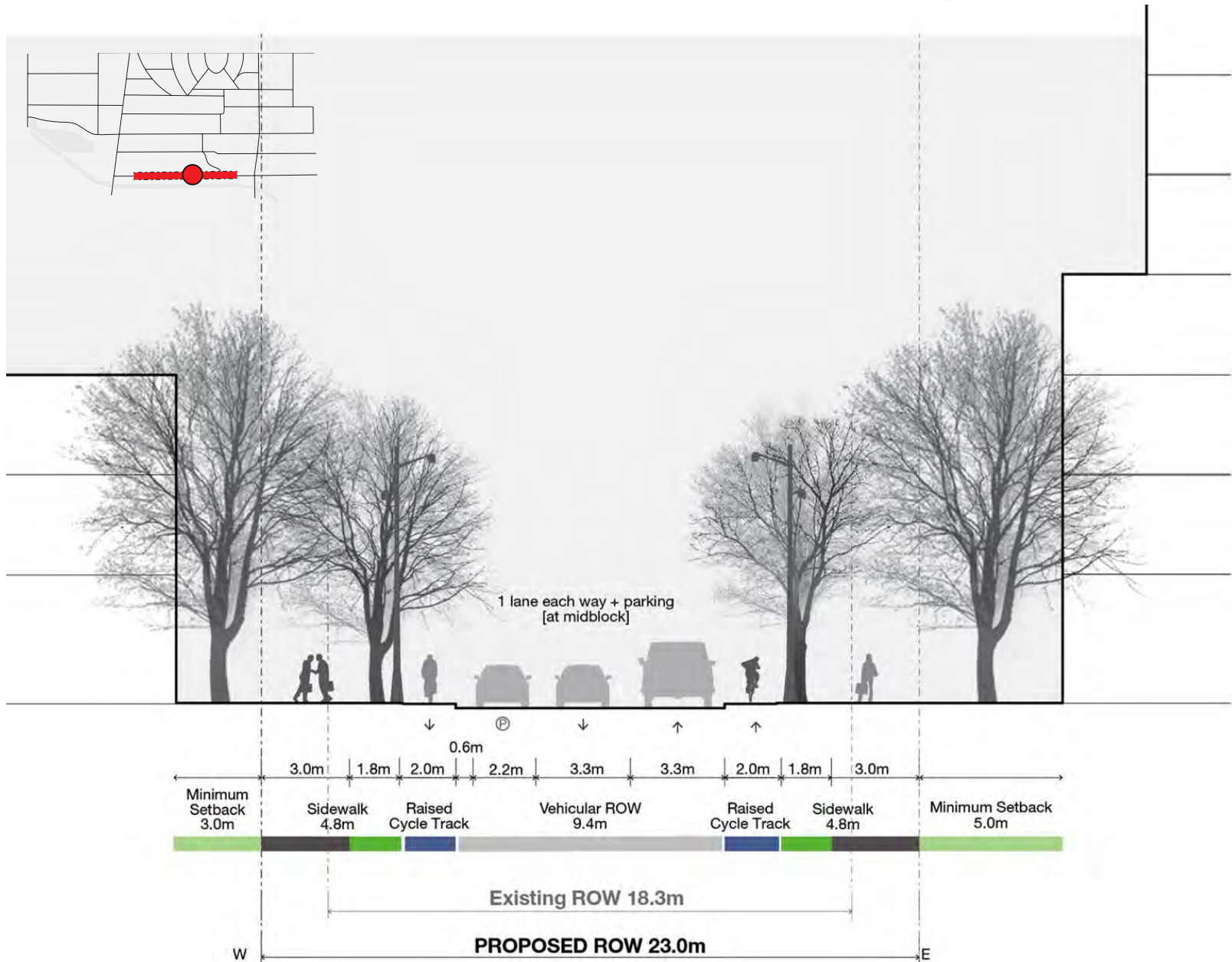






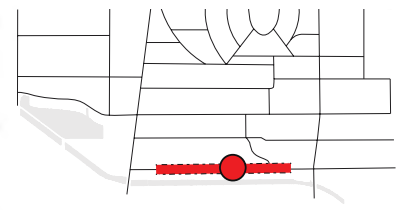
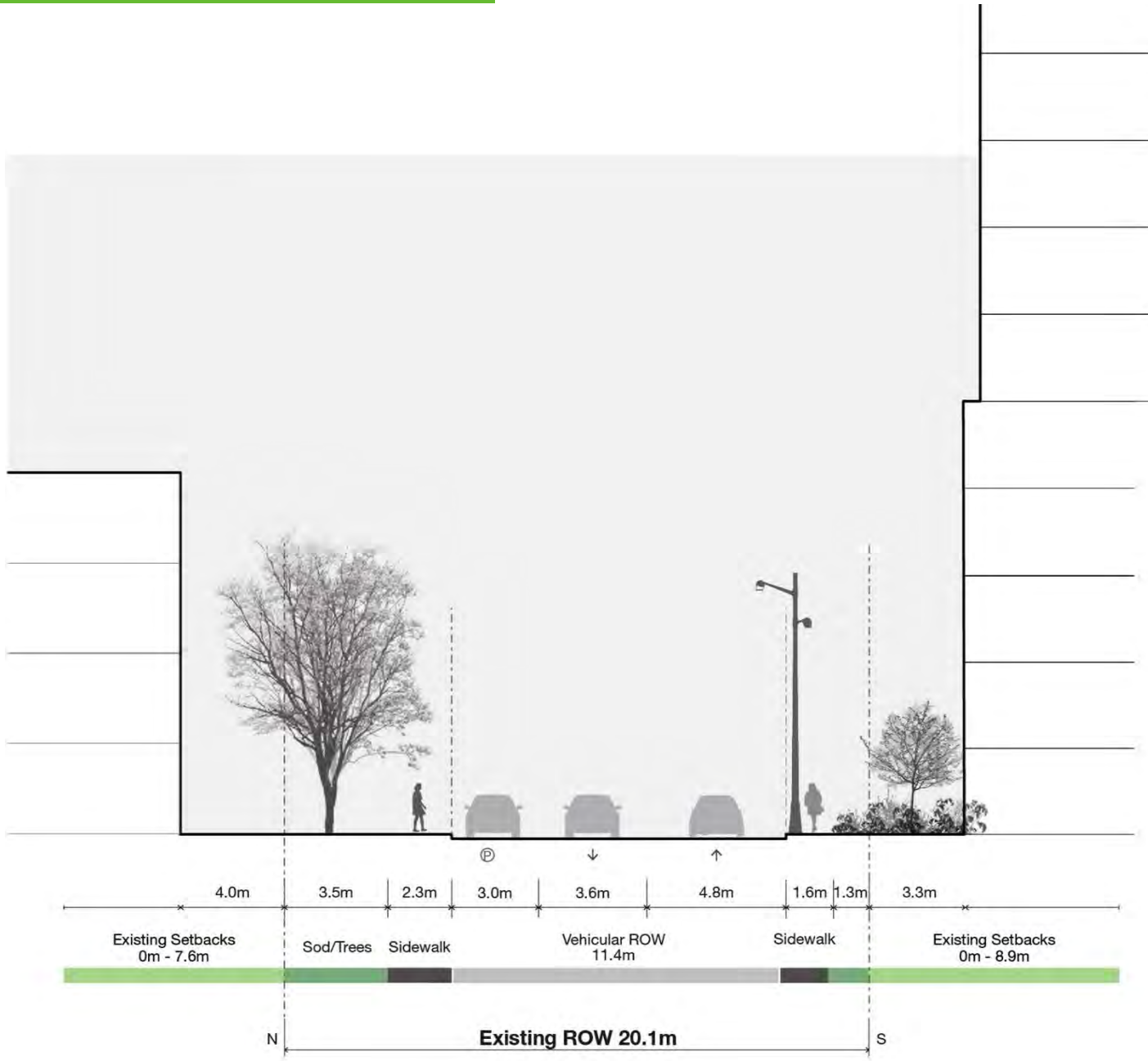


Davisville Community Street – Conceptual Cross-section





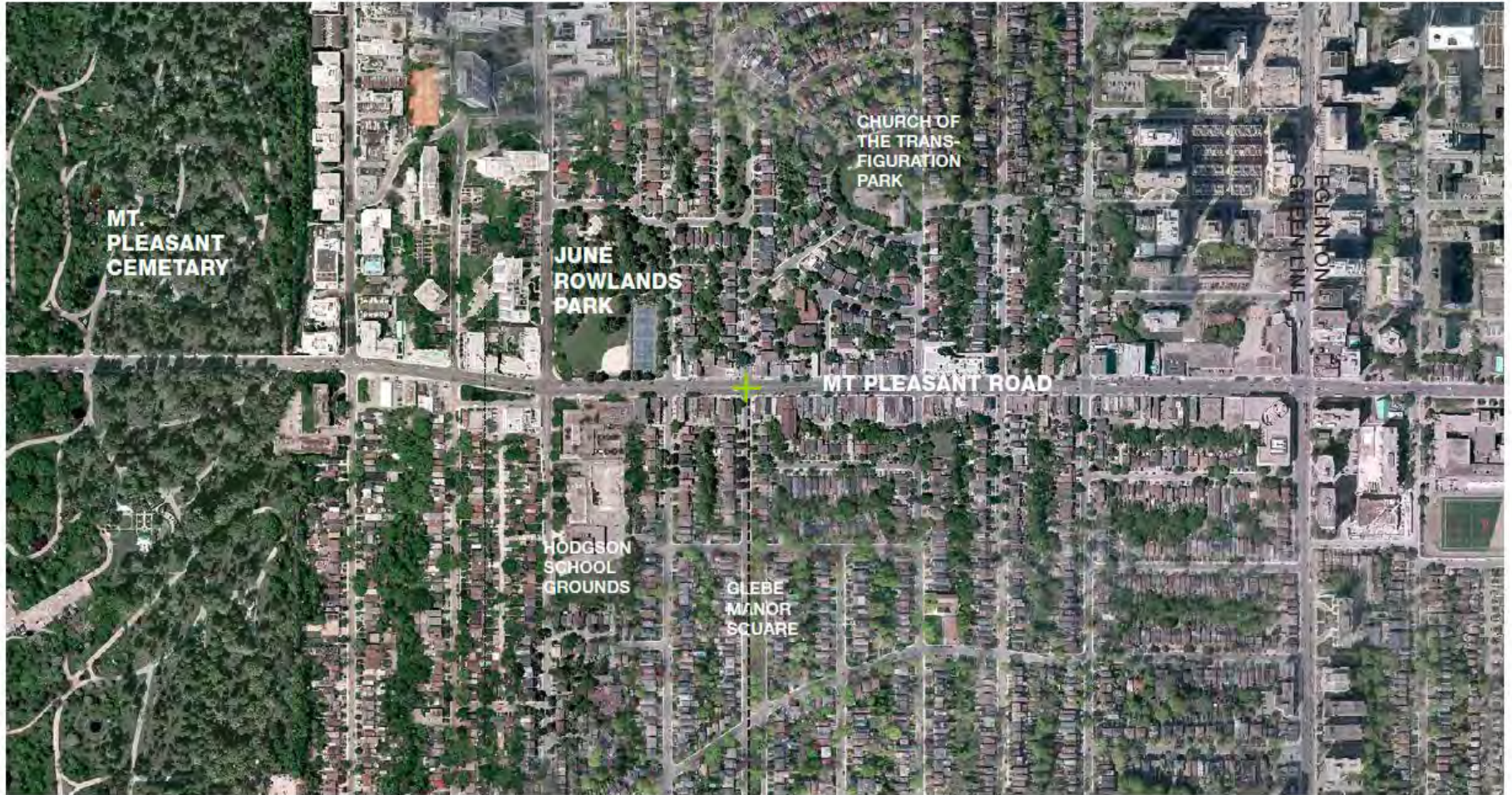
Existing Merton





Merton Street Promenade – Conceptual Cross-section

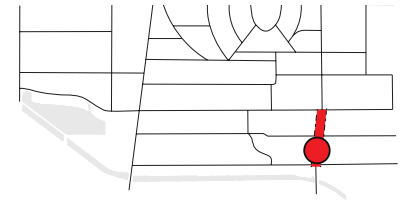
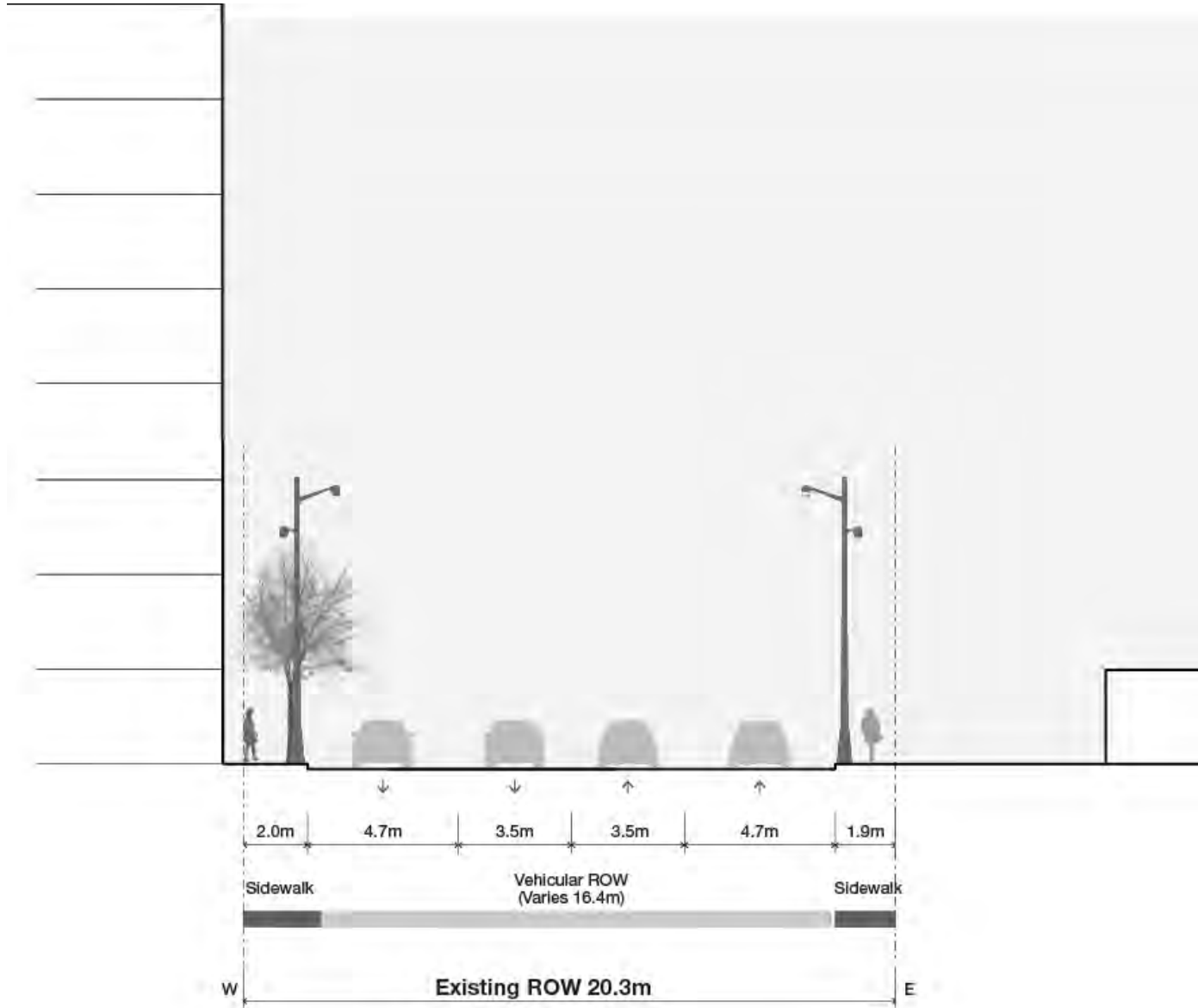




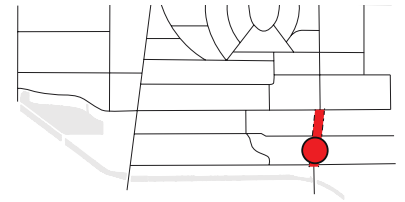
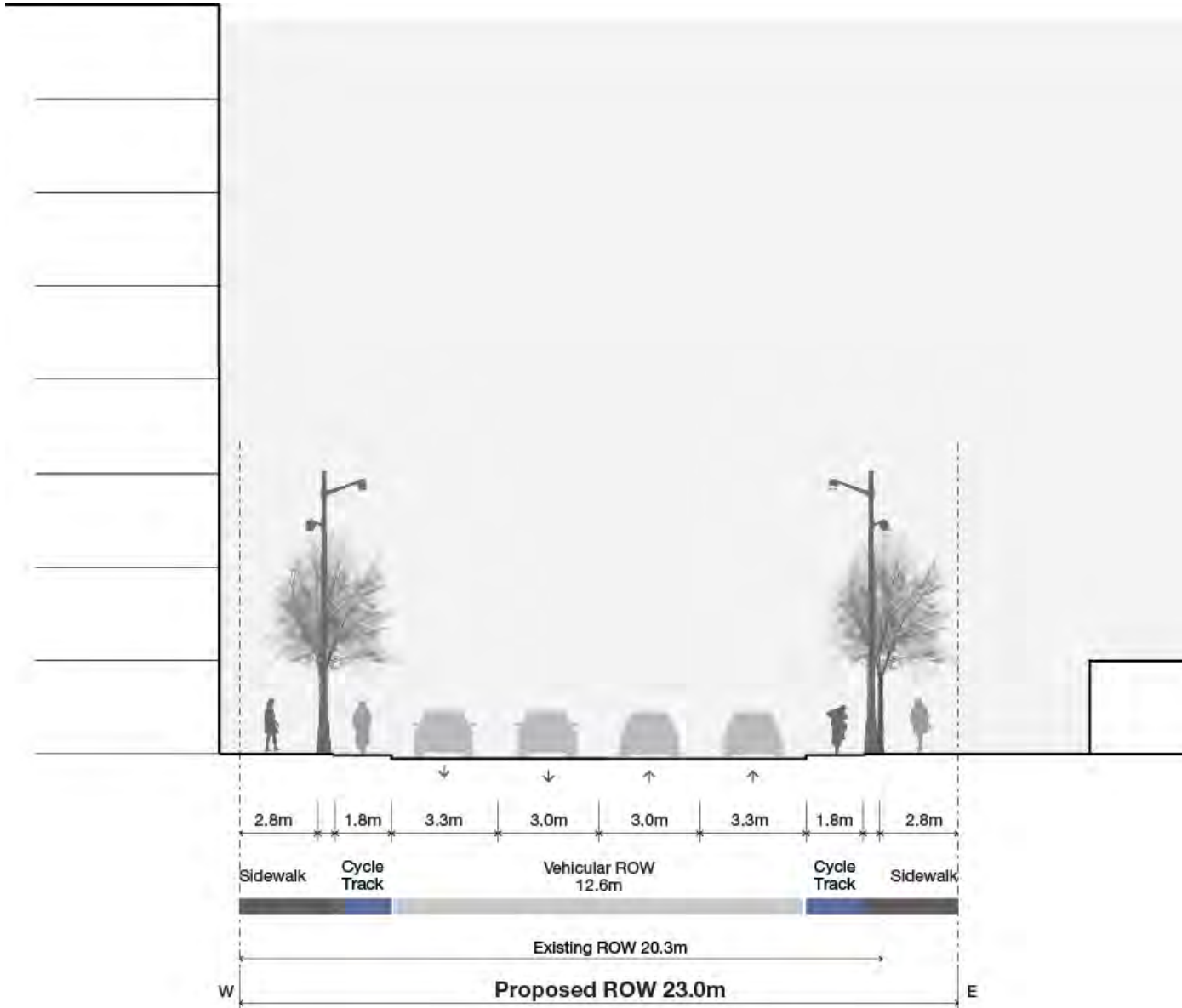
Source: Public Work

THE 'CREST' OF
MT. PLEASANT
VILLAGE

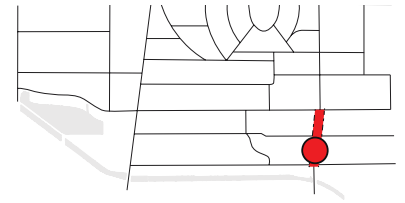
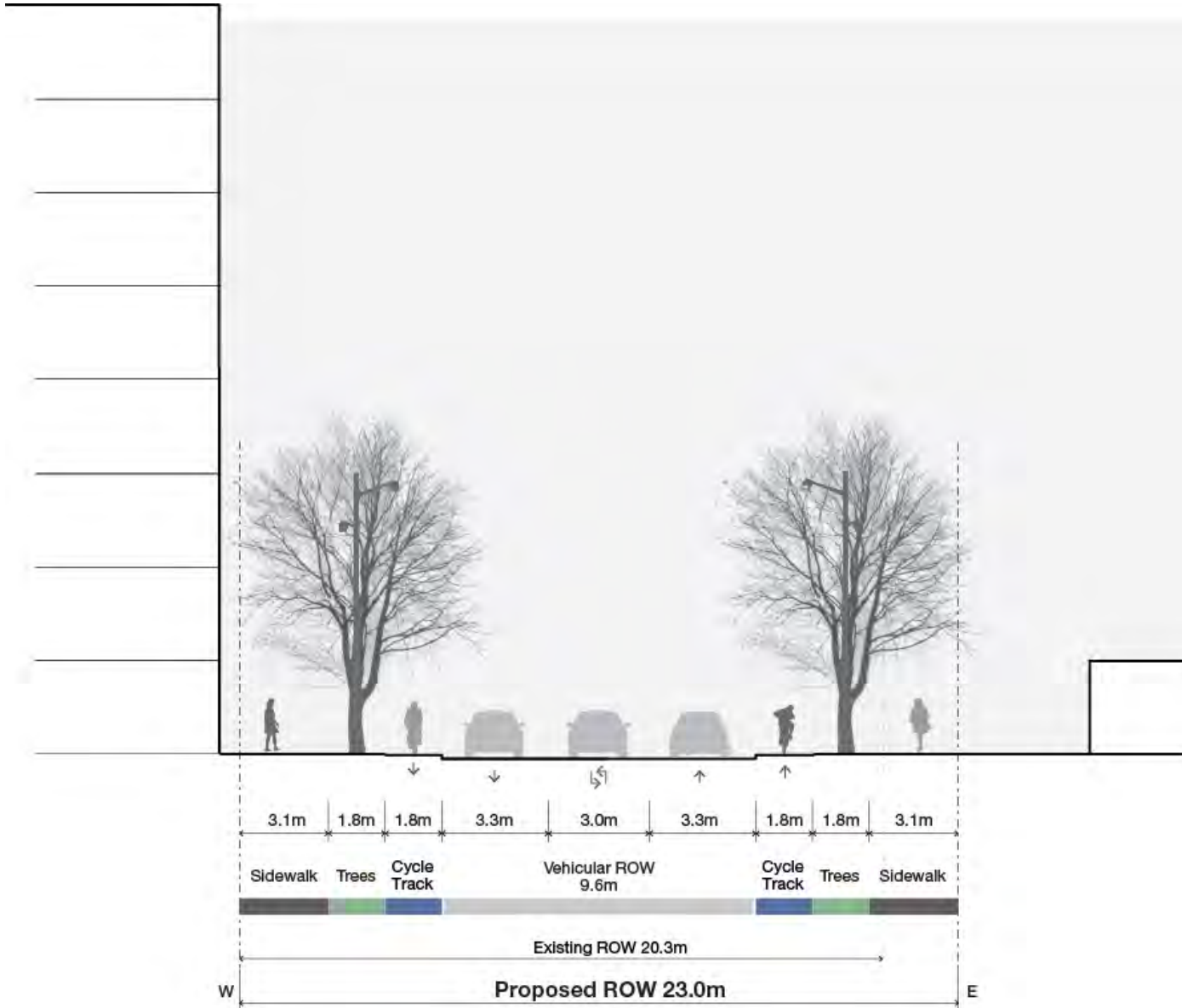
Existing Mount Pleasant Road



Mount Pleasant Road Arboretum – Conceptual Cross-section

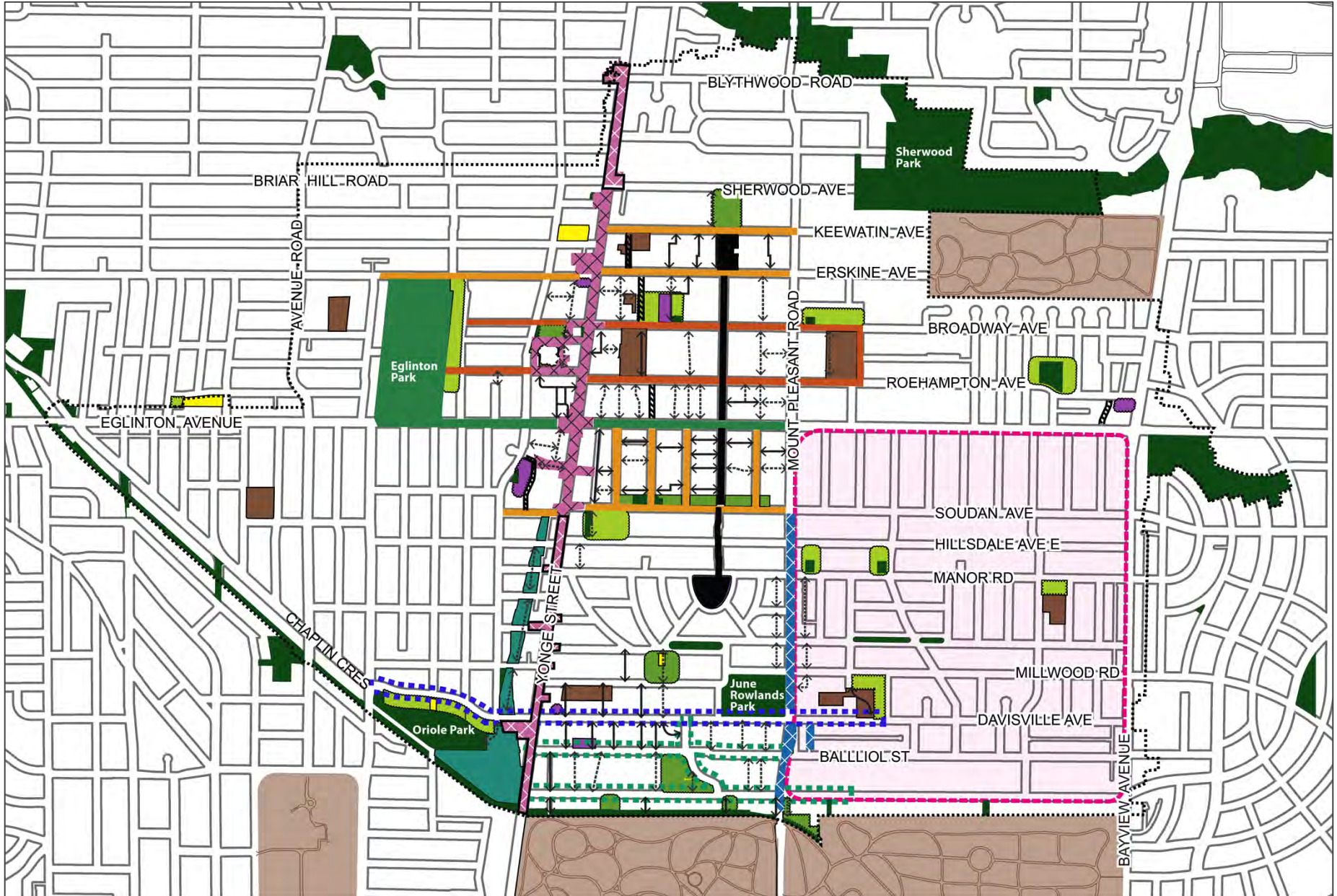


Mount Pleasant Road Arboretum – Conceptual Cross-section





- LEGEND**
- █ Eglinton Greenline
 - █ Park Street Loop
 - █ Redpath Revisited
 - █ Greenways
 - ▨ Yonge Street Squares
 - ▨ Yonge Street Squares Extension
 - - - Davisville Community Street
 - - - Ballion Green Street, Pailton Connector and Merton Promenade
 - ▨ Mount Pleasant Road Arboretum
 - - - Midblock Connections
 - - - Secondary Plan Boundary



Next Steps + Workshop



- Update parkland provision mapping for growth anticipated to 2051
- Refine and test scenarios to optimize the locations and approximate size of park spaces and improved access
- Incorporate feedback from consultation and revise/finalize Parks and Public Realm Plans
- Continue to refine Implementation tools
 - New parkland dedication rate
 - Other tools/strategies to acquire/enhance parkland



Dots

- If you think a proposed **new or expanded park** will **address gaps** and **improve** access and functionality, place a green dot on the park.
- If you **do not agree** with **the new or expanded park**, place a red dot on the park. Identify key reasons for not wanting this as a park on a sticky note.
- If you think we **missed a park**, place a yellow dot on the map for where we should locate a new park

Sticky notes

- If you have any comments on:
 - a) parks you think we should prioritize
 - b) any of the proposed new parks or expansions; or
 - c) why we should remove a proposed park;
 - d) opportunities to improve existing parks and what those may be;
 - e) Solutions to help stitch the parks together and further improve the public realm plan