

Calls to Paramedic Services for Suspected Opioid Overdoses

Geographic Information

KEY MESSAGES:

Data from Toronto Paramedic Services (TPaS) show that calls for suspected opioid overdoses are concentrated in the downtown area. The top five neighbourhoods and top ten main intersections with the highest number of calls were all in the downtown area, bounded roughly by Bathurst to the West, Bloor to the North, the Don Valley Parkway to the East, and Lake Ontario to the south. ¹

However, opioid overdoses are occurring in many areas of Toronto. Other areas where TPaS responded to calls included to the east and west of the downtown core, and parts of Etobicoke, North York, and Scarborough.

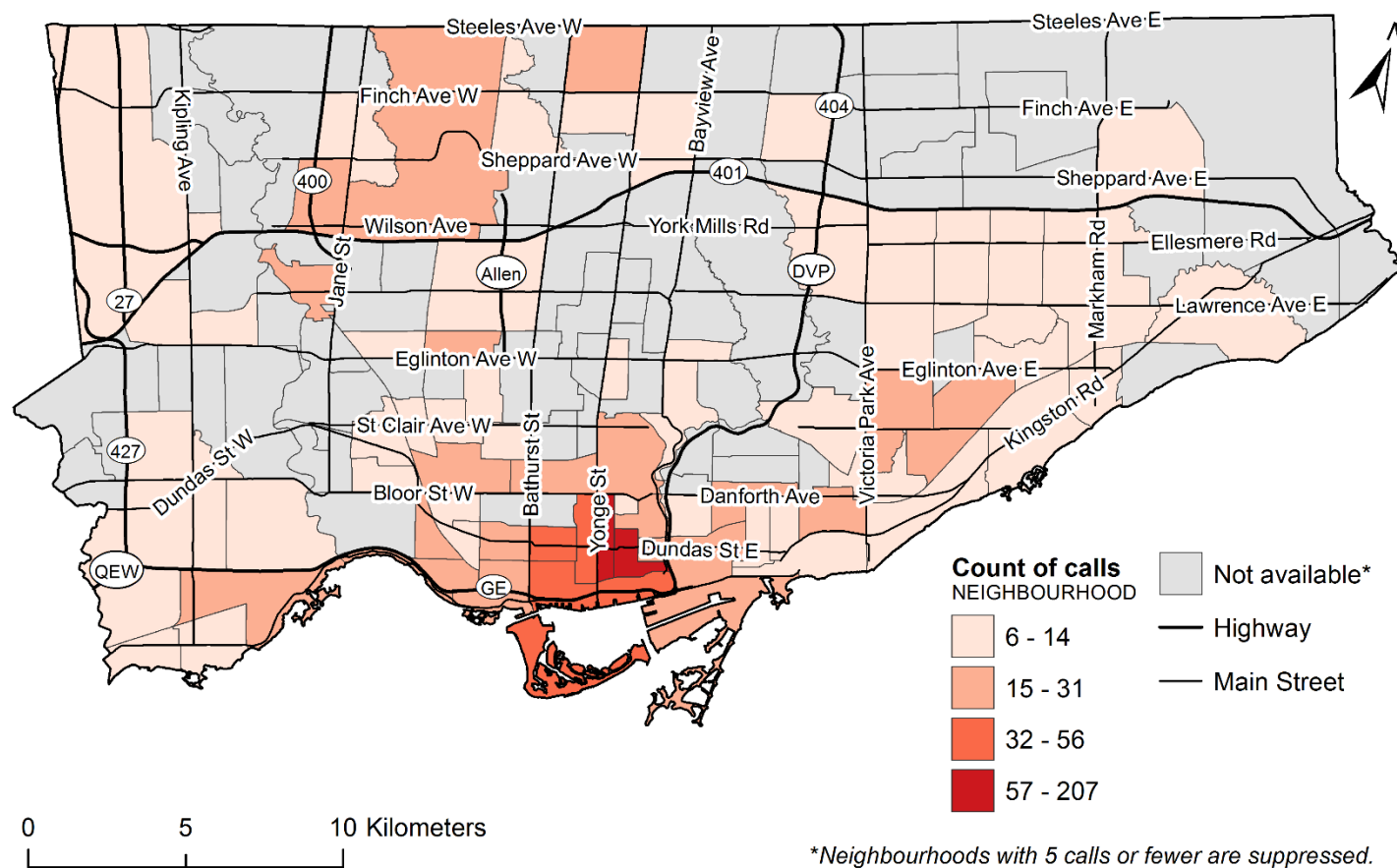
Please review the Data Notes section for more information. This information will be posted online and updated on a regular basis at www.toronto.ca/health/overdosestats.

DATA NOTES:

- The data include cases where the responding paramedic suspects an opioid overdose. This may differ from the final diagnosis in hospital or cause of death determined by the coroner.
- The data provided in this document includes only instances where 911 is called and likely underestimates the true number of overdoses in the community.
- Information is preliminary and subject to change pending further review of the data source.
- The location refers to where paramedics made contact with patients, which may or may not be the same location from which 911 was called.
- Neighbourhood refers to the boundaries as defined by the City of Toronto. To search neighbourhoods by address or location, use the [Neighbourhood Listing Location Lookup tool](#).
- Fatal and non-fatal cases are combined here to prevent identification of individuals.
- Neighbourhoods with 5 or fewer cases over the 6-month period were suppressed to prevent identification of individuals.
- To provide information on intersections of interest, cases have been aggregated to the nearest main intersection, as defined by the City of Toronto. Intersections with 8 or fewer cases have been suppressed to prevent identification of individuals.

For more information, please contact seu@toronto.ca.

Map of suspected opioid overdose calls received by Toronto Paramedic Services by neighbourhood*, Toronto, August 7, 2017 to January 31, 2018



Source: Toronto Paramedic Services. Electronic Patient Care Record. August 7, 2017 to January 31, 2018. Extracted February 6, 2018. Prepared by, Toronto Public Health.

Suspected opioid overdose calls received by Toronto Paramedic Services by neighbourhood*, Toronto, August 7, 2017 to January 31, 2018

Neighbourhood	Number of Calls
Moss Park	207
Church-Yonge Corridor	190
Bay Street Corridor	56
Waterfront Communities-The Island	51
Kensington-Chinatown	46
Mimico	31
Dovercourt-Wallace Emerson-Junction	29
Cabbagetown-South St.James Town	28
Regent Park	27
South Riverdale	24
Annex	24
Weston	21
York University Heights	19
Clairlea-Birchmount	19
East End-Danforth	19
Niagara	19
Roncesvalles	17
Newtonbrook West	17
Rosedale-Moore Park	17
Kennedy Park	17
Danforth Village - Toronto	17
Blake-Jones	16
South Parkdale	16
Downsview-Roding-CFB	16
Briar Hill-Belgravia	15
Trinity-Bellwoods	15
Long Branch	14
Cliffcrest	13
Wexford/Maryvale	13
Mount Pleasant West	13
O'Connor-Parkview	13
West Hill	13
Woodbine Corridor	13
West Humber-Clairville	12
North St.James Town	12
Woburn	11
New Toronto	11

TORONTO OVERDOSE INFORMATION SYSTEM

Prepared by Toronto Public Health

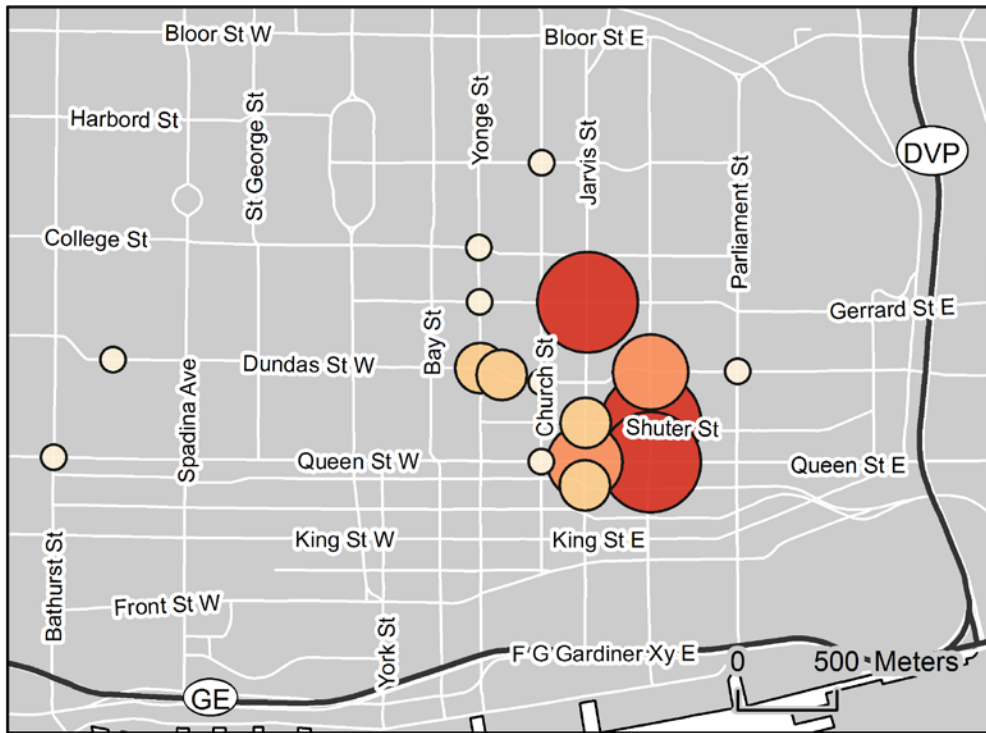
February 2018

Neighbourhood	Number of Calls
Eglinton East	11
Glenfield-Jane Heights	11
Crescent Town	10
Scarborough Village	10
Willowdale East	10
Bathurst Manor	10
Stonegate-Queensway	10
Junction Area	9
Wychwood	9
Weston-Pellam Park	9
Oakwood-Vaughan	9
Dorset Park	9
Parkwoods-Donalda	9
The Beaches	9
Islington-City Centre West	8
Malvern	8
Alderwood	8
Little Portugal	8
Englemount-Lawrence	8
Greenwood-Coxwell	7
Willowdale West	7
Dufferin Grove	7
High Park North	7
Oakridge	7
North Riverdale	7
Yorkdale-Glen Park	7
Leaside-Bennington	7
Willowridge-Martingrove-Richview	6
Beechborough-Greenbrook	6
Birchcliffe-Cliffside	6
Don Valley Village	6
Bendale	6
Corsa Italia-Davenport	6

* Neighbourhoods with 5 or fewer cases are suppressed to prevent identification of individuals.

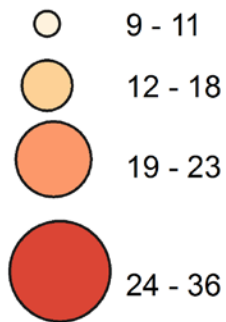
Source: Toronto Paramedic Services. Electronic Patient Care Record. August 7, 2017 to January 31, 2018. Extracted February 6, 2018. Prepared by Toronto Public Health.

Downtown map of suspected opioid overdose calls received by Toronto Paramedic Services by nearest main intersection*, Toronto, August 7, 2017 to January 31, 2018

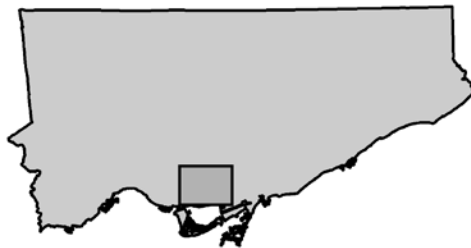


Count of calls

(BY NEAREST INTERSECTION)*



Inset map



**Intersections with 8 calls or fewer are suppressed.*

* Calls have been aggregated to the nearest main intersection, as defined by the City of Toronto. Intersections with 8 or less cases have been suppressed to prevent identification of individuals.

Source: Toronto Paramedic Services. Electronic Patient Care Record. August 7, 2017 to January 31, 2018. Extracted February 6, 2018. Prepared by Toronto Public Health.

Suspected opioid overdose calls received by Toronto Paramedic Services by nearest main intersection*, Toronto, August 7, 2017 to January 31, 2018

Nearest Main Intersection	Number of Calls
Jarvis St / Gerrard St E	36
Sherbourne St / Shuter St	32
Queen St E / Sherbourne St	31
Jarvis St / Queen St E	23
Dundas St E / Sherbourne St	21
Jarvis St / Richmond St E	18
Yonge St / Dundas St	16
Dundas St E / Victoria St	16
Jarvis St / Shuter St	13
Yonge St / Carlton St	11
Dundas St W / Denison Ave	11
Church St / Wellesley St E	11
Queen St E / Church St	10
Dundas St E / Church St	10
Lansdowne Ave / Dupont St	9
Weston Rd / Lawrence Ave	9
Kipling Ave / Horner Ave	9
Yonge St / Gerrard St	9
Dundas St E / Parliament St	9
Bathurst St / Queen St W	9
Danforth Ave / Greenwood Ave	9

* Calls have been aggregated to the nearest main intersection, as defined by the City of Toronto. Intersections with 8 or fewer cases have been suppressed to prevent identification of individuals.

Source: Toronto Paramedic Services. Electronic Patient Care Record. August 7, 2017 to January 31, 2018. Extracted February 6, 2018. Prepared by Toronto Public Health.