

RIVERSIDE DR.

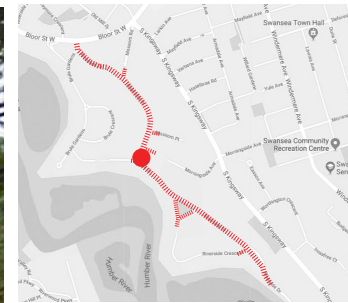
STREETSCAPE IMPROVEMENT - INTERSECTION AT RIVERSIDE TRAIL

APRIL 2018

EXISTING CONDITION



9m-10m wide roadway



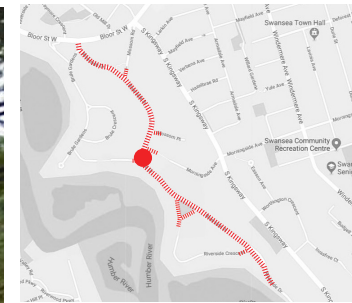
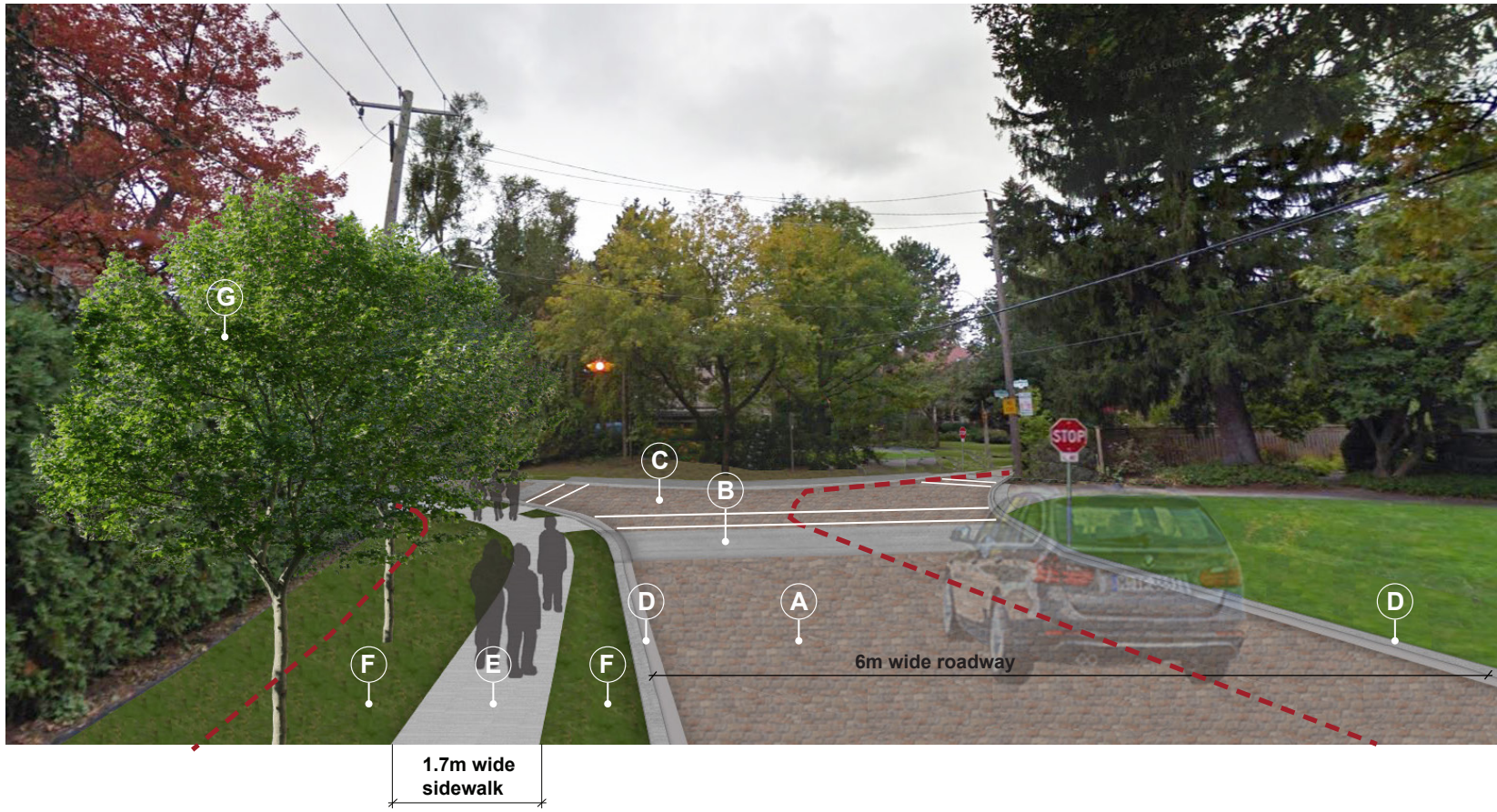
LOOKING SOUTH

RIVERSIDE DR.

STREETSCAPE IMPROVEMENT - INTERSECTION AT RIVERSIDE TRAIL

APRIL 2018

PLANNED IMPROVEMENTS



LOOKING SOUTH

- A 6m wide roadway (concrete roadway pavers)
- B concrete ramp
- C raised table
- D rolled curb
- E sidewalk
- F sod boulevard
- G trees