

RIVERSIDE DR.
STREETSCAPE IMPROVEMENT
APRIL 2018

EXISTING CONDITION



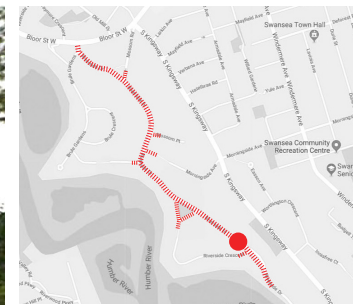
9m-10m wide roadway



LOOKING NORTH

RIVERSIDE DR.
STREETSCAPE IMPROVEMENT
 APRIL 2018

PLANNED IMPROVEMENTS



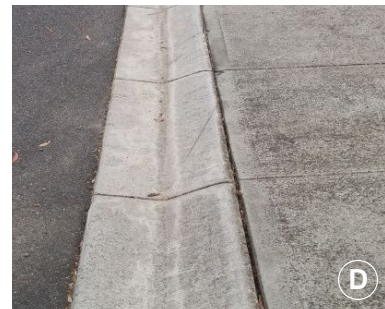
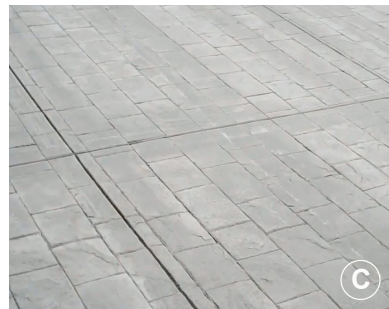
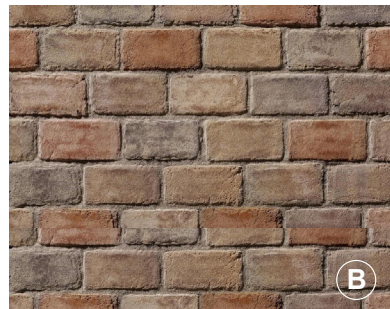
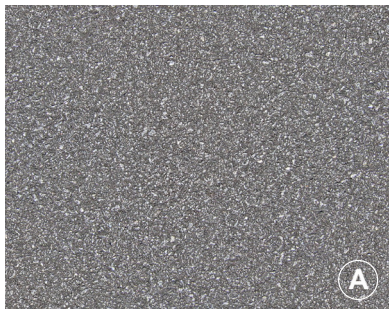
LOOKING NORTH

- A 7.2m wide asphalt roadway
- B concrete roadway pavers
- C curb extensions
- D sidewalk
- E sod boulevard
- F trees
- G rolled curbs

1.2m wide sod blvd. 1.7m wide sidewalk

RIVERSIDE DR.
STREETSCAPE IMPROVEMENT
APRIL 2018

FINISH MATERIALS



- A asphalt
- B concrete roadway pavers
- C sidewalk
- D rolled curbs

RIVERSIDE DR.
STREETScape IMPROVEMENT
APRIL 2018

PLANT PALETTE



- A** Trees - Common Hackberry
- B** Trees - Sugar Maple
- C** Shrubs - Ninebark
- D** Shrubs - Pennsylvania Sedge
- E** Sod

