



DON MILLS
CROSSING
Community Building at
Eglinton and Don Mills

CONNECT WITH NATURE AND BUILD RESILIENCY



CONNECTING WITH NATURE

An ecology-based and integrated approach to the the design of private development and the public realm will both protect the adjacent natural heritage system and extend the experience of the ravine into the city.

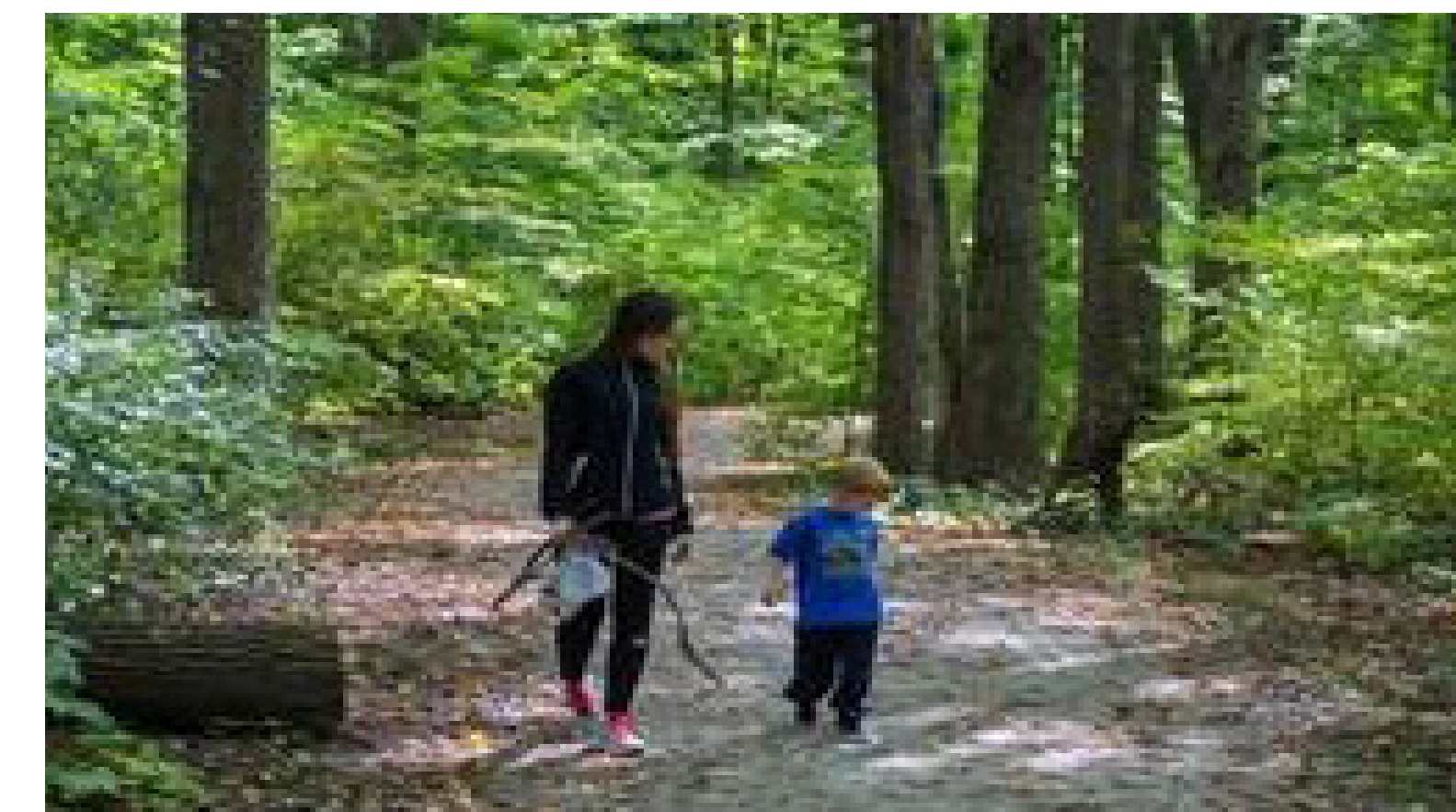
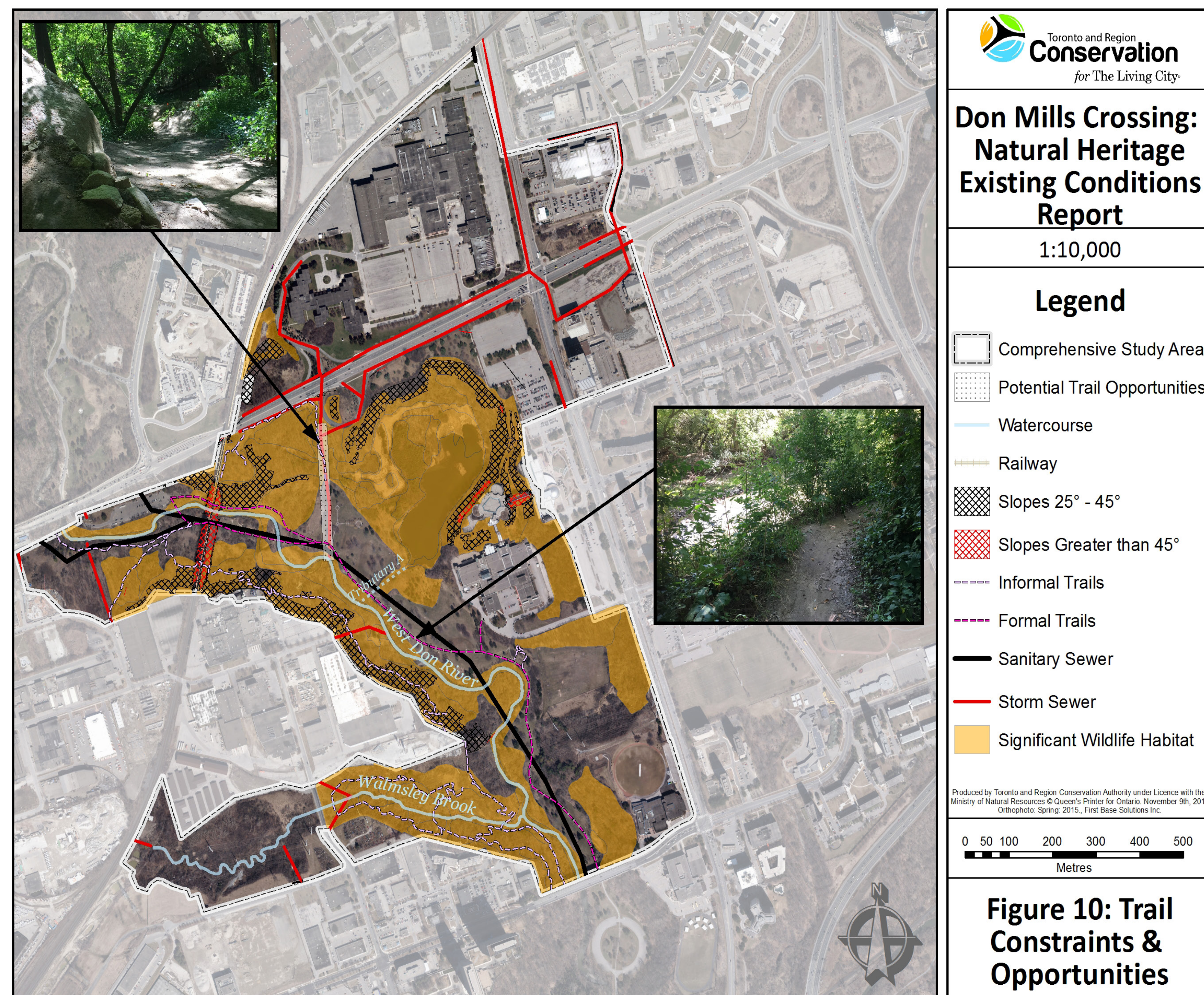
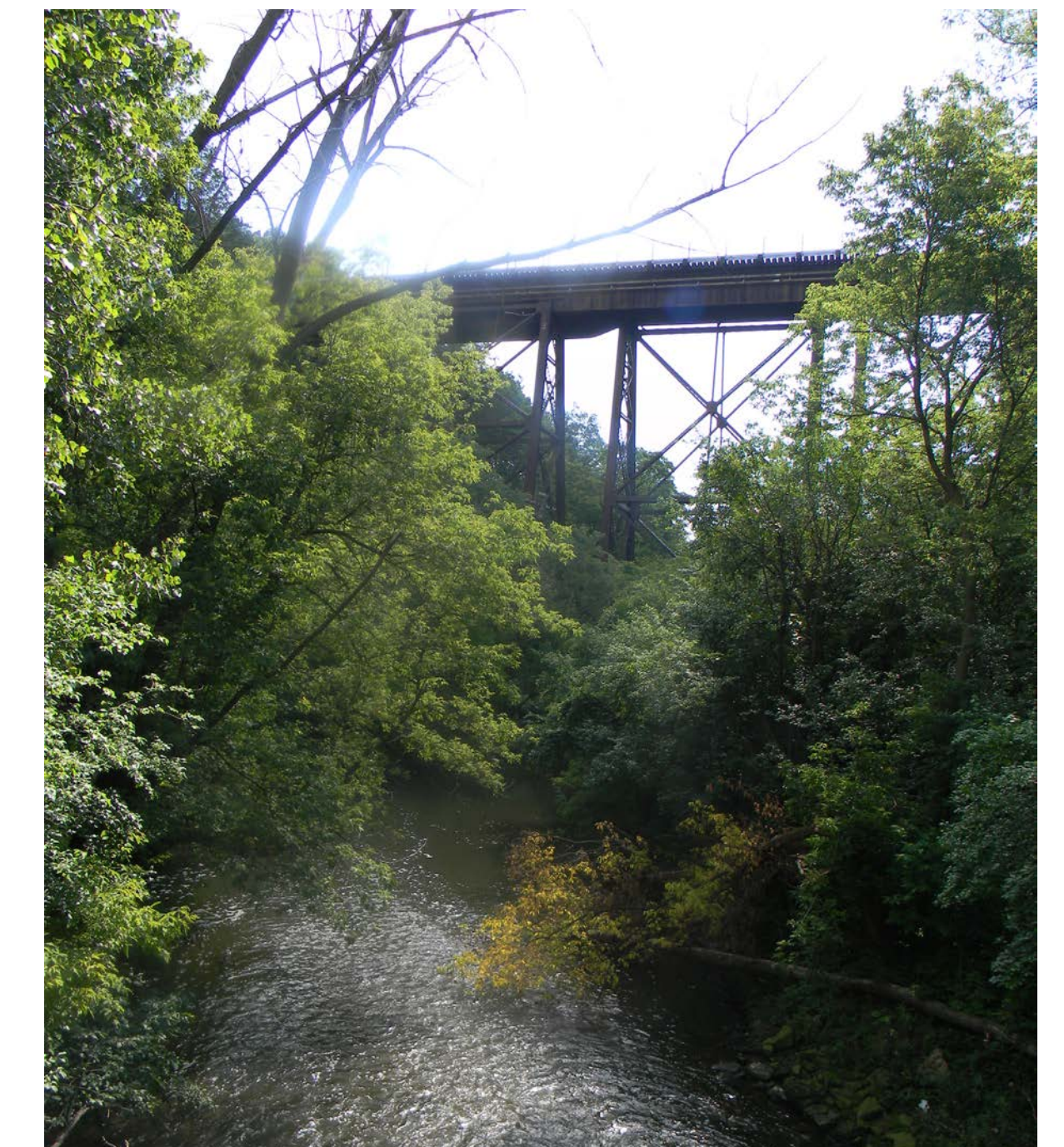
Policy Highlights

Protecting the Ravine

- Low impact development standards and stormwater management practices will direct stormwater away from the ravine.
- Within the Secondary Plan Area, the planting of native species will be required for private development sites and public realm improvements.
- The new formalized trail access into the ravine will provide greater protection by removing informal points of access, while establishing appropriate buffer widths and buffer functions within environmentally sensitive areas.

Integrating and Enhancing Ecological Function

- Parks and open spaces can enhance the ecological function of the area through sustainability elements such groupings of naturalized tree and understory plantings for habitat expansion.
- Development and streetscape improvements will be informed by the City's Green Streets Technical Guidelines.
- Development will be encouraged to incorporate biodiversity strategies in the design of the buildings and site by creating species habitats, planting pollinator-friendly vegetation and designing biodiverse green roofs.



Building Resiliency

- The development of a District Energy system anchored by the future City facilities will be encouraged,
- New development will be encouraged to connect to existing or planned thermal energy networks, integrate on-site electricity production to reduce electricity demand, and target net-zero energy use and emissions.

