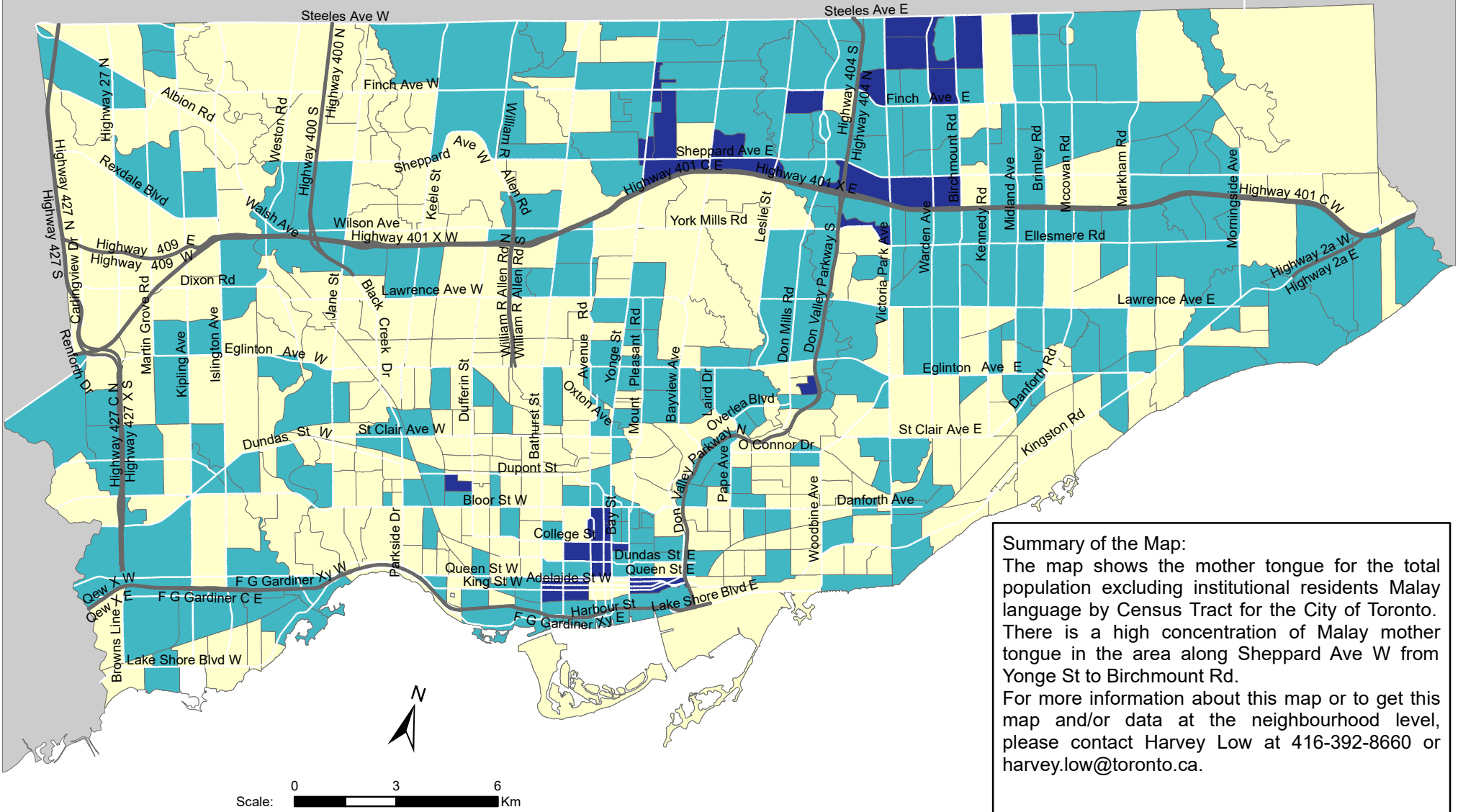
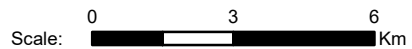


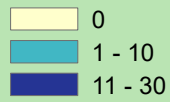
# City of Toronto Mother Tongue - Malay 2016



**Summary of the Map:**  
 The map shows the mother tongue for the total population excluding institutional residents Malay language by Census Tract for the City of Toronto. There is a high concentration of Malay mother tongue in the area along Sheppard Ave W from Yonge St to Birchmount Rd. For more information about this map or to get this map and/or data at the neighbourhood level, please contact Harvey Low at 416-392-8660 or [harvey.low@toronto.ca](mailto:harvey.low@toronto.ca).



## Mother tongue for the total population - Malay



- Not available/ No data
- Expressway
- Major Arterial

Source: City of Toronto;  
 Statistics Canada 2016 Census.  
 Copyright © 2018 City of Toronto. All Rights Reserved.  
 Published: May 2018.  
 Prepared by: Social Research and Analysis Unit.  
 Contact: [spar@toronto.ca](mailto:spar@toronto.ca).