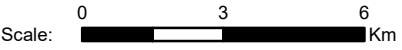
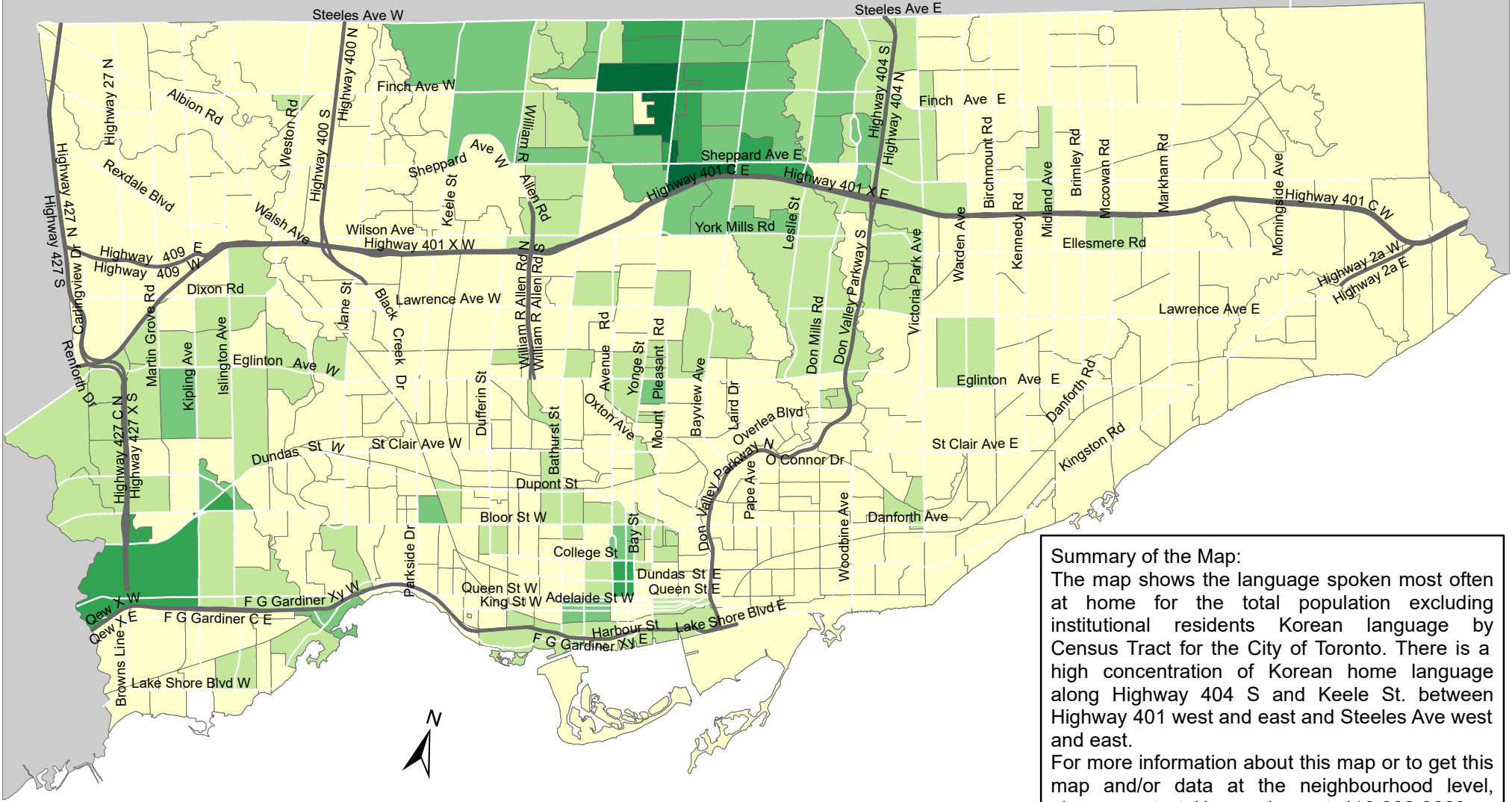


City of Toronto Home Language - Korean 2016



Summary of the Map:
 The map shows the language spoken most often at home for the total population excluding institutional residents Korean language by Census Tract for the City of Toronto. There is a high concentration of Korean home language along Highway 404 S and Keele St. between Highway 401 west and east and Steeles Ave west and east.
 For more information about this map or to get this map and/or data at the neighbourhood level, please contact Harvey Low at 416-392-8660 or harvey.low@toronto.ca.

Language spoken most often at home for the total population excluding institutional residents - Korean

- 0 - 30
- 31 - 105
- 106 - 270
- 271 - 575
- 576 - 1,075

- Not available/ No data
- Expressway
- Major Arterial

Source: City of Toronto; Statistics Canada 2016 Census.
 Copyright © 2018 City of Toronto. All Rights Reserved. Published: May 2018.
 Prepared by: Social Research and Analysis Unit. Contact: spar@toronto.ca.