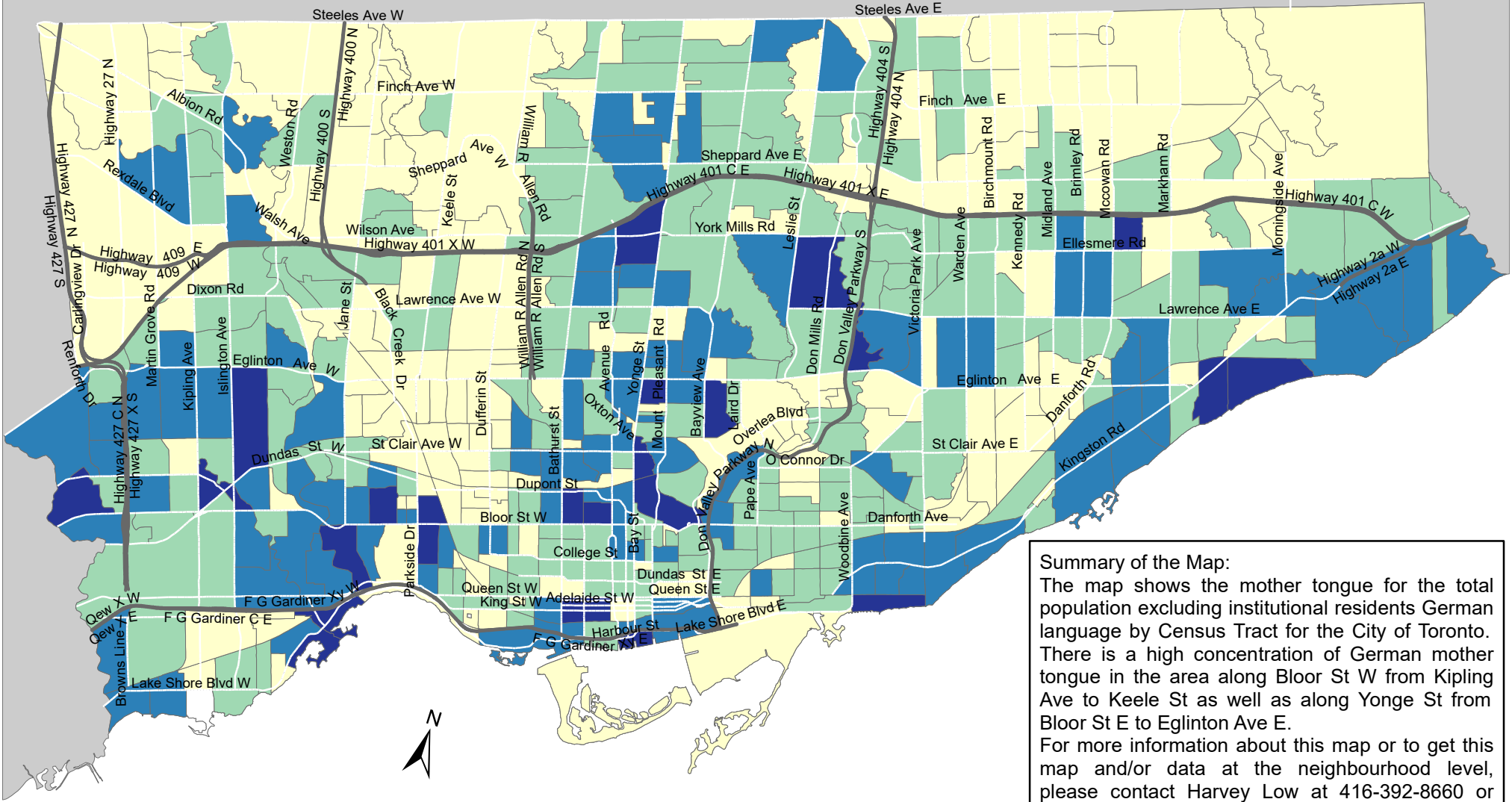


City of Toronto Mother Tongue - German 2016



Summary of the Map:
 The map shows the mother tongue for the total population excluding institutional residents German language by Census Tract for the City of Toronto. There is a high concentration of German mother tongue in the area along Bloor St W from Kipling Ave to Keele St as well as along Yonge St from Bloor St E to Eglinton Ave E. For more information about this map or to get this map and/or data at the neighbourhood level, please contact Harvey Low at 416-392-8660 or harvey.low@toronto.ca.

Mother tongue for the total population - German

- 0 - 15
- 16 - 35
- 36 - 65
- 66 - 120

- Not available/ No data
- Expressway
- Major Arterial

Source: City of Toronto;
 Statistics Canada 2016 Census.

Copyright © 2018 City of Toronto. All Rights Reserved.
 Published: May 2018.

Prepared by: Social Research and Analysis Unit.
 Contact: spar@toronto.ca.