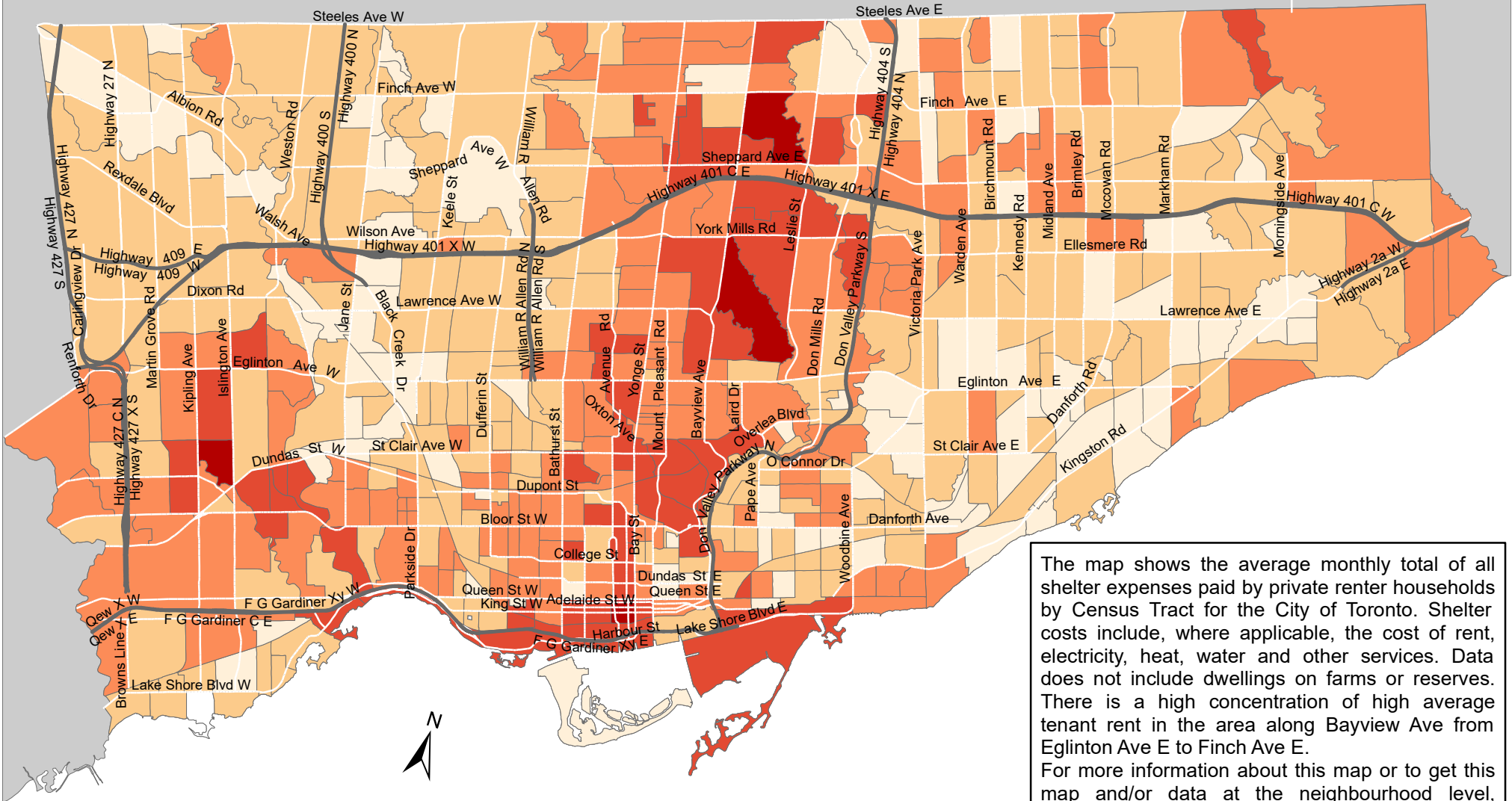


City of Toronto Population - Tenant Average Shelter Costs 2016



The map shows the average monthly total of all shelter expenses paid by private renter households by Census Tract for the City of Toronto. Shelter costs include, where applicable, the cost of rent, electricity, heat, water and other services. Data does not include dwellings on farms or reserves. There is a high concentration of high average tenant rent in the area along Bayview Ave from Eglinton Ave E to Finch Ave E. For more information about this map or to get this map and/or data at the neighbourhood level, please contact Harvey Low at 416-392-8660 or harvey.low@toronto.ca.

Tenant Average Shelter Costs

- 0 - 987
- 988 - 1,257
- 1,258 - 1,594
- 1,595 - 2,361
- 2,362 - 3,622

- Not available/ No data
- Expressway
- Major Arterial

Source: City of Toronto;
Statistics Canada 2016 Census.

Copyright © 2018 City of Toronto. All Rights Reserved.
Published: May 2018.

Prepared by: Social Research and Analysis Unit.
Contact: spar@toronto.ca.