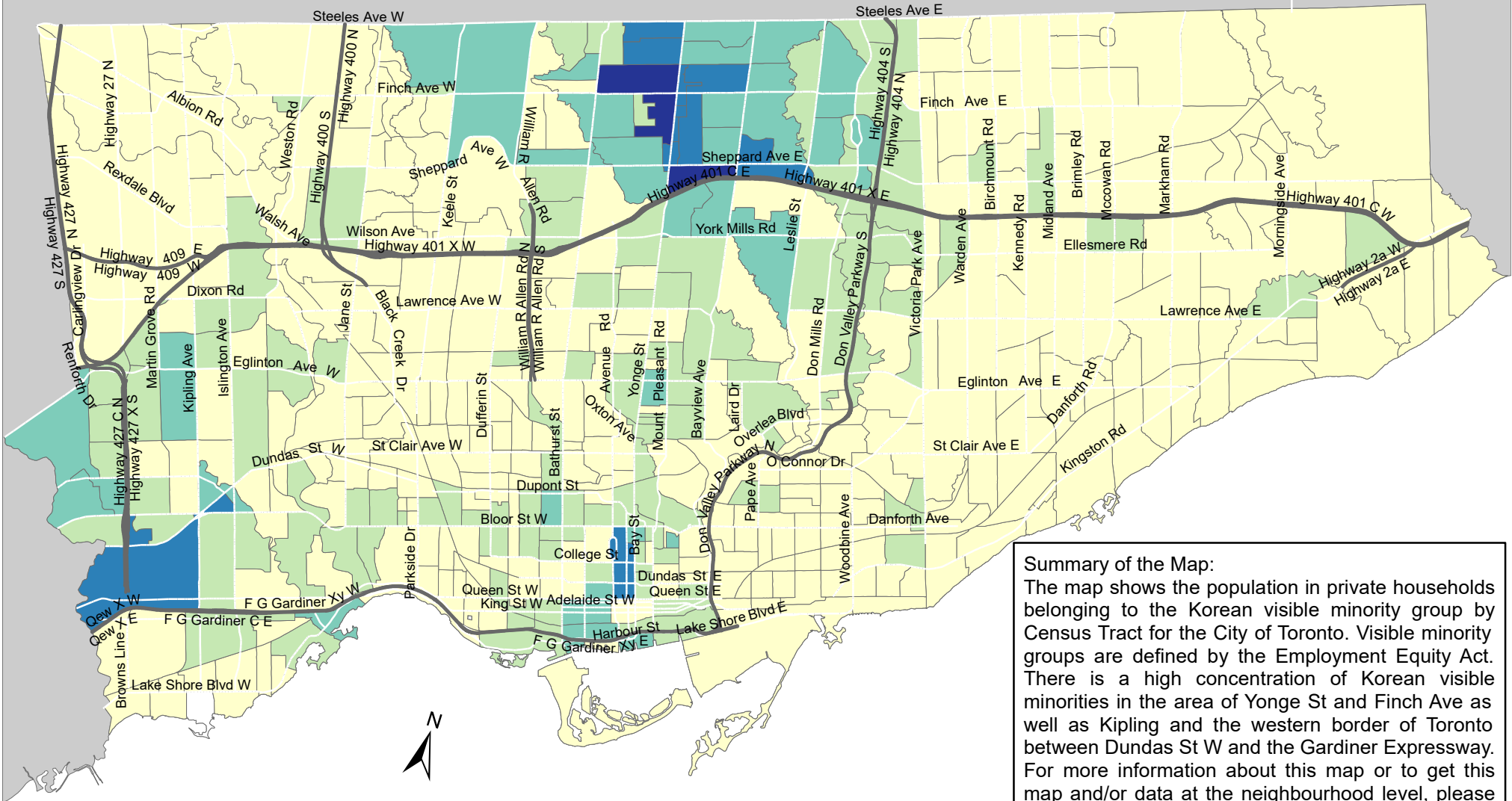
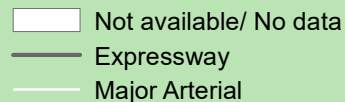
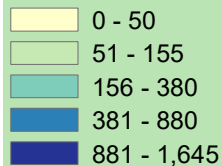


City of Toronto Visible Minority - Korean 2016



Summary of the Map:
 The map shows the population in private households belonging to the Korean visible minority group by Census Tract for the City of Toronto. Visible minority groups are defined by the Employment Equity Act. There is a high concentration of Korean visible minorities in the area of Yonge St and Finch Ave as well as Kipling and the western border of Toronto between Dundas St W and the Gardiner Expressway. For more information about this map or to get this map and/or data at the neighbourhood level, please contact Harvey Low at 416-392-8660 or harvey.low@toronto.ca.

Total Visible Minority Population -



Source: City of Toronto;
 Statistics Canada 2016 Census.

Copyright © 2018 City of Toronto. All Rights Reserved.
 Published: May 2018.

Prepared by: Social Research and Analysis Unit.
 Contact: spar@toronto.ca.