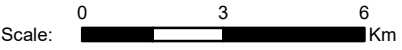
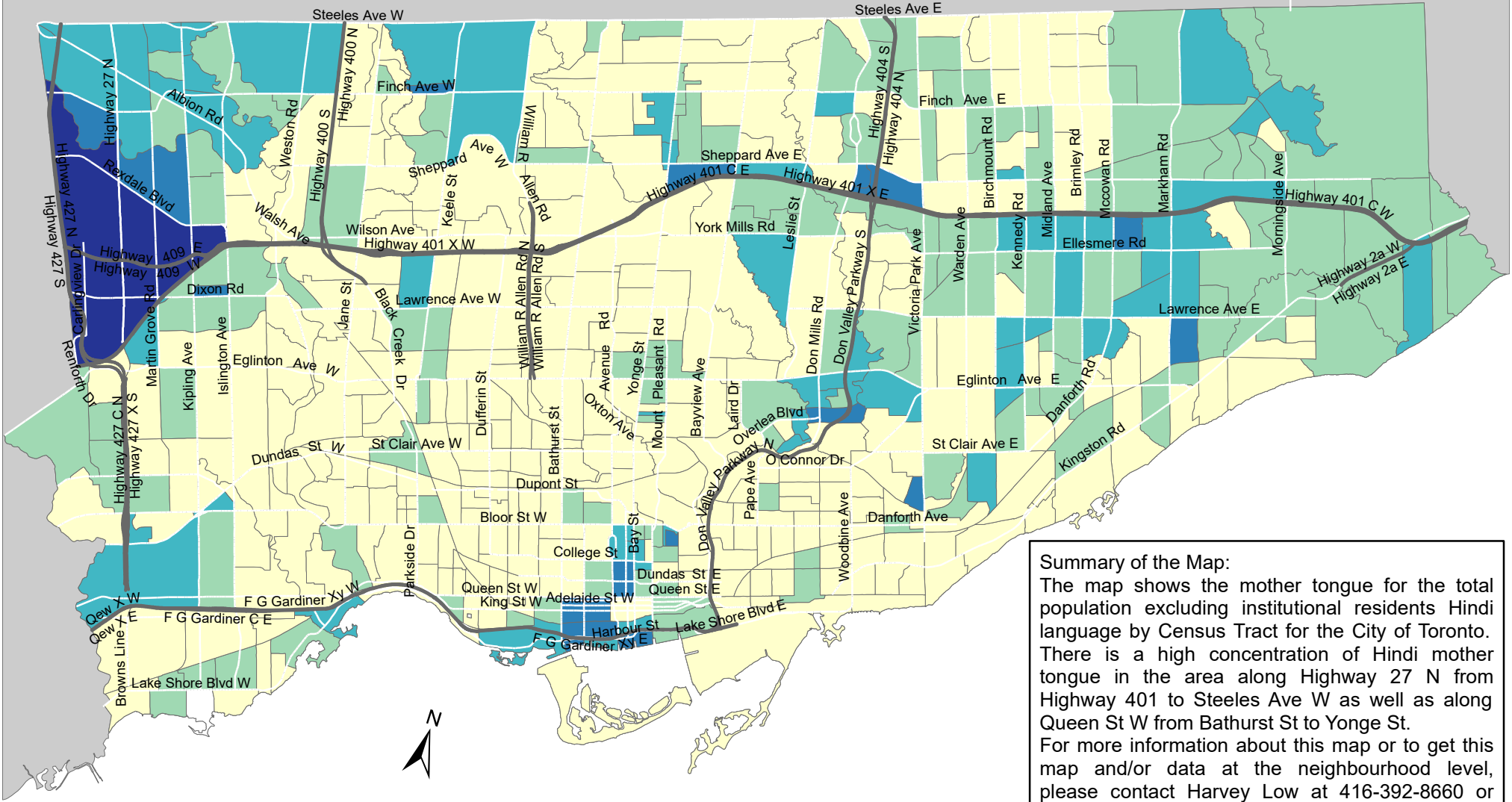


# City of Toronto Mother Tongue - Hindi 2016



**Summary of the Map:**  
 The map shows the mother tongue for the total population excluding institutional residents Hindi language by Census Tract for the City of Toronto. There is a high concentration of Hindi mother tongue in the area along Highway 27 N from Highway 401 to Steeles Ave W as well as along Queen St W from Bathurst St to Yonge St. For more information about this map or to get this map and/or data at the neighbourhood level, please contact Harvey Low at 416-392-8660 or [harvey.low@toronto.ca](mailto:harvey.low@toronto.ca).

**Mother tongue for the total population - Hindi**

- 0 - 20
- 21 - 55
- 56 - 110
- 111 - 200
- 201 - 325

- Not available/ No data
- Expressway
- Major Arterial

Source: City of Toronto;  
 Statistics Canada 2016 Census.  
 Copyright © 2018 City of Toronto. All Rights Reserved.  
 Published: May 2018.  
 Prepared by: Social Research and Analysis Unit.  
 Contact: [spar@toronto.ca](mailto:spar@toronto.ca).