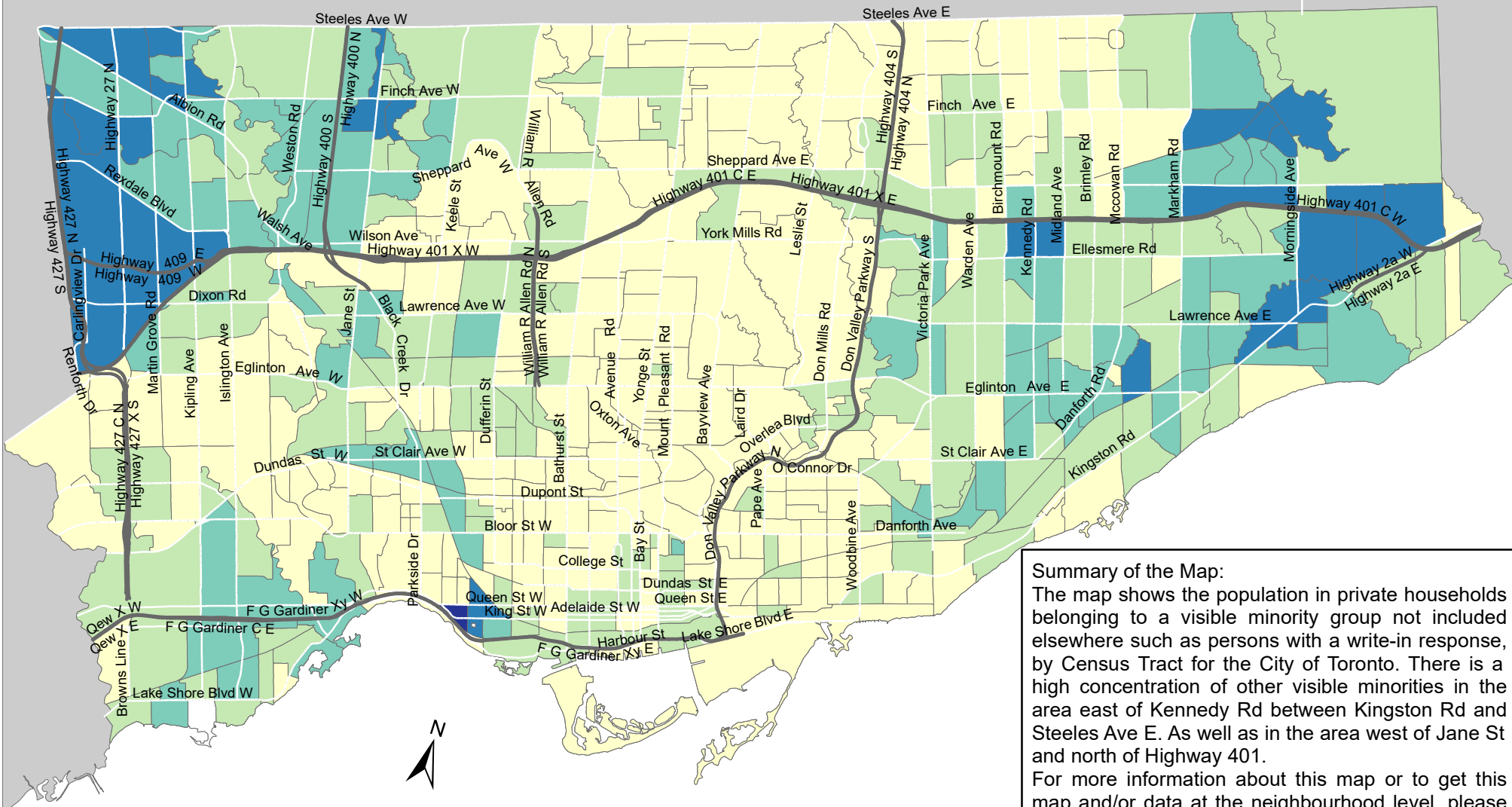


# City of Toronto Visible Minority - Visible Minority, n.i.e. 2016



**Summary of the Map:**  
 The map shows the population in private households belonging to a visible minority group not included elsewhere such as persons with a write-in response, by Census Tract for the City of Toronto. There is a high concentration of other visible minorities in the area east of Kennedy Rd between Kingston Rd and Steeles Ave E. As well as in the area west of Jane St and north of Highway 401.  
 For more information about this map or to get this map and/or data at the neighbourhood level, please contact Harvey Low at 416-392-8660 or [harvey.low@toronto.ca](mailto:harvey.low@toronto.ca).

## Total Visible Minority Population - Visible Minority, n.i.e.

- 0 - 40
- 41 - 105
- 106 - 215
- 216 - 420
- 421 - 860

- Not available/ No data
- Expressway
- Major Arterial

Source: City of Toronto;  
 Statistics Canada 2016 Census.  
 Copyright © 2018 City of Toronto. All Rights Reserved.  
 Published: May 2018.  
 Prepared by: Social Research and Analysis Unit.  
 Contact: [spar@toronto.ca](mailto:spar@toronto.ca).